

Sherwood Primary School NEWSLETTER



27/03/2026

Dear Parents and Carers,

Egg-phaba de-frying gravity!

Wow! What an Easter Eggshibition we've had this week. It's always a pleasure to see the children's creativity fill our corridors - the egg themed 'play on words' have had everyone giggling! Thank you and well done to everyone for taking part. Results enclosed.

What a show!

Congratulations to all our children in Y1 and Y2 for a superb performance this week. Your performance of Mega Mighty Mini-Beasts was wonderful!

Reading Ambassadors – Go all In!

Thank you to Reading Ambassadors from Archbishop Temple Secondary School for visiting Sherwood this week to read to our children in Y1 and Y2. The students were superb role models for our children.

Fundraising thank you!

Thank you to everyone who supported the PTA Bingo last night. It was fun event and a great fundraiser - **£338.59!** Thank you to our PTA helpers and Louise in our kitchen for preparing the pizza! A big thank you also for your non-uniform donations today – we've made a great start to our School Orchard and Growing Zone Fundraising Pot.

Child and Family Wellbeing Service Parent/Carer Course

Following the positive feedback in the Autumn Term, the Child and Family Wellbeing Service will be back next term to deliver another course for parents and carers. The course focusses on supporting your child's emotional wellbeing.

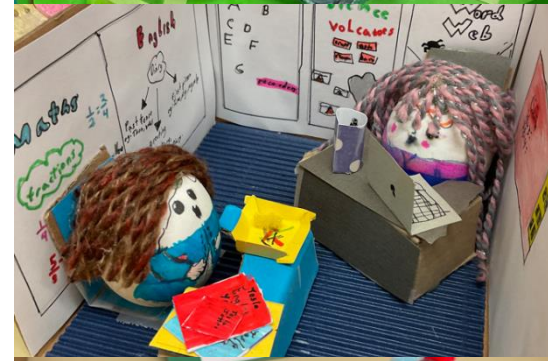
Sessions will take place each week from 13:00 to 15:00pm from 20th April 2026 through to 6th July 2026 in BASE.

If you would like to attend, please complete the School Spider form to register.

Spring Term Closure

It's the end of the Spring Term. I hope the next two weeks provide the children with quality time for rest and play! The enclosed online safety links provide a wealth of guidance for you – including getting the right balance between screen time alongside play and physical activity. Enjoy the great outdoors together and we'll see everyone on Monday 13th April. Happy Easter Team Sherwood!

Yours, Mrs Lumb



SCHOOL LUNCHES - SUMMER 1

The cost of dinner money for Summer 1 is **£87.00** for the 6-week term. Please credit your account in advance, as usual, on Parent pay.

In line with LCC catering charges and the increase in food and labour costs, School meals are increasing to **£3.00 per day** from April. Thank you.

PHYSICAL EDUCATION IN SUMMER 1

PE days for our KS2 are as follows for the next term, your child can attend school in their PE kit on the days below:

Year 3 -Monday

Year 4- Wednesday

Year 5- Monday and Thursday

Year 6- Wednesday and Friday

EASTER EGGSHIBITION

Well done to all of our entrants this year. We have loved your ideas and creativity (as always).

EYFS

1st-Partrick L

2nd- Charlie Q

Year 1

1st- Pippa F

2nd – Roman B

Year 2

1st- Muhammad E

2nd – Florence L

Year 3

1st- Tesla D

Joint 2nd- Harley V/ Riyanka G

Year 4

1st - Iyla L

2nd- Lilly W

Year 5

1st- Lottie O

2nd- Sienna E

Year 6

Joint 1st- Zaina P/ Alex C

2nd- Isla RC

Parent Category

1st- Parent of Isla R

2nd- Parent of Alexander M



A NEW FUNDRAISING GOAL

Linking brilliantly to our strategic long-term plan, [our environmental sustainability plan](#) and our Curriculum, we have agreed upon a new fundraising target.

We would like to design and create a new growing zone and establish a school orchard.

With the support of our PTA, we are aiming to have sufficient funds to establish the new area by the end of the Summer Term. So, keep your eyes peeled for fundraising events!

LINKS AND EXPERTISE

If you have any valuable links or expertise in this area, please do not hesitate to come forward. We'd welcome as much input as possible.

SPONSOR A TREE

We will also be providing families with the opportunity to sponsor a fruit tree. This could be combined across families also – giving our children a tree to look after and follow its growth in our orchard! More details to follow.

Thank you in advance for your support!

PARENT/CARER PSHE & RSE CONSULTATION

We would be most grateful if you can take a few minutes to complete our PSHE/RSE curriculum consultation form. We have carefully considered the new statutory changes that will be introduced from September 2026. Your views are an important part of our curriculum design and we value your feedback. The form will be available on School Spider.

SUMMER TERM UNIFORM

Next term, there is the option of Summer Uniform for children:

Summer Term Uniform (optional)

- Blue gingham dress
- White polo shirts and short grey trousers

Socks and Tights

- Grey, black, Navy or White socks or tights.

No gingham shorts, playsuits or leggings please

The Great Preston Fairtrade Egg Hunt

Is Back!



Back for a third year.

Come and join our great Fairtrade Egg hunt and win some Fairtrade chocolate.

- There are 12 knitted eggs located at different businesses in the city centre - all businesses that support Fairtrade. A knitted egg will be on display at each of these - either visible from outside in the window or inside in the counter area. Each egg will display a letter.
- Print off the map/entry form or collect one from the Harris Library or from one of the following: Lush, Holland & Barrett, Body Shop, Central Methodists, Oxfam, Waterstones.
- Write the letter found at each location on your entry form.
- When you have found all the letters, use them to find the hidden phrase.
- Finally leave your completed form at the Harris Library or in Central Methodists letter box and wait to hear if you have won some tasty Fairtrade chocolate.

You can do this any time between Saturday 28th March and Saturday 11th April. Have a Happy Fairtrade Easter!

Fairtrade is about better prices, working conditions and fair terms of trade for the people who grow the products we love (coffee, tea, cocoa, bananas). It also ensures high environmental standards - all guaranteed by the Fairtrade Mark. Fairtrade products exploit neither the environment nor the people who produce them and buying them has a direct impact on the lives and well being of producers and their communities. www.fairtrade.org.uk

Fairtrade Preston, fairpreston@gmail.com, 07813 870641

My Name is..... Contact details:

Compet it io n runs from 28th March to 11th of April.



Fairtrade is about better prices, working conditions and fair terms of trade for the people who grow the products we love (e.g. coffee, tea, cocoa, bananas). It also ensures high environmental standards - all guaranteed by the Fairtrade Mark. Fairtrade products exploit neither the environment nor the people who produce them and buying them has a direct impact on the lives and well being of producers and their communities. www.fairtrade.org.uk



Now you have all the letters, work out the eggcellent phrase that they make and write it in the space below.

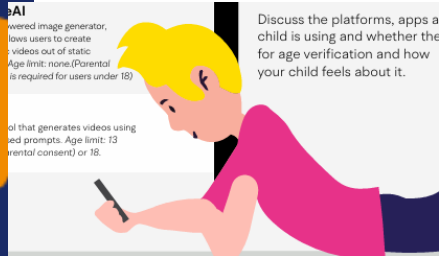
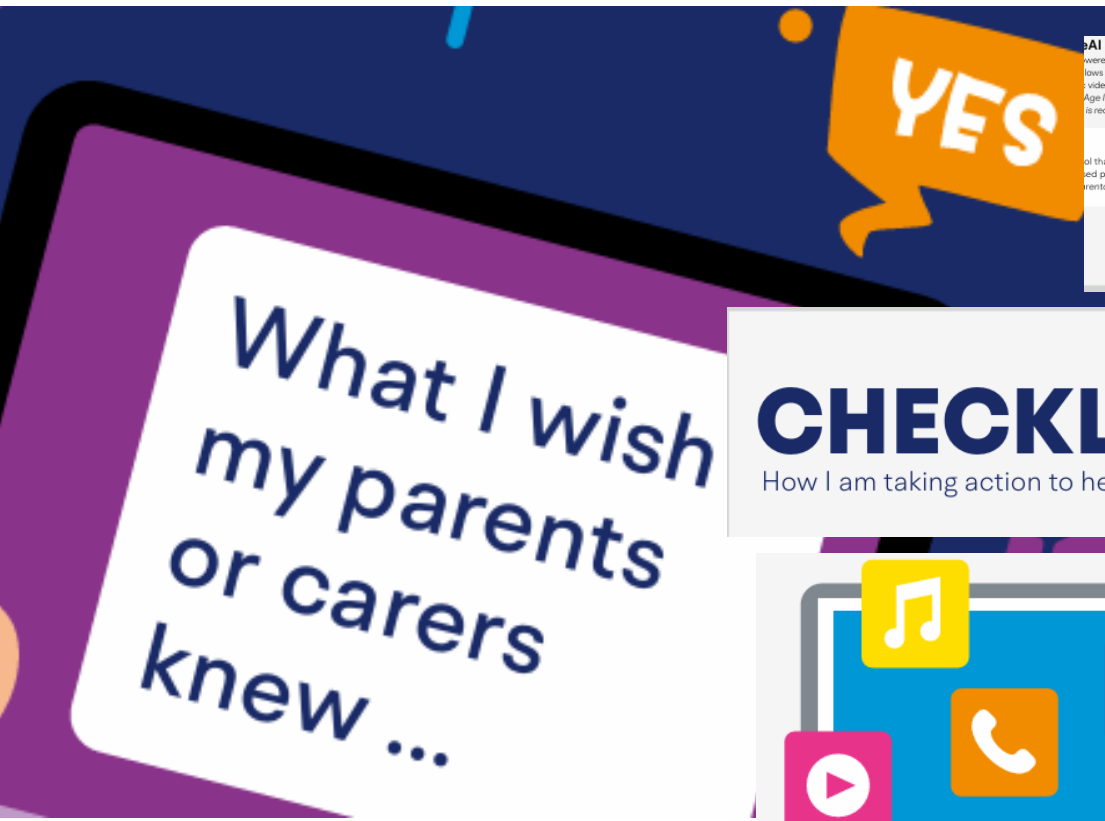
_____!



The Great Preston Fairtrade Egg Hunt.

Go to the * marked places to pick up a map, & find the knitted eggs on display in windows or on counters. Each egg has a letter. Write down the letter and work out what phrase they make. Drop off your finished sheet at Central Methodist's Letter Box or the Harris Library for the chance to win some eggcellent prizes in our chocolatey draw!

	SHOP NAME	
1	Lush *	
2	Holland and Barrett *	
3	Greggs [Fishergate]	
4	Sainsburys	
5	Greggs [St George's downstairs]	
6	Body Shop [Nr Fishergate entrance] *	
7	Central Methodists Letter Box Drop Off	—
8	Greggs [Orchard Street]	
9	Oxfam *	
10	Preston Health Food Store	
11	Waterstones *	
12	Co-op bank	
13	Harris Library* Drop off Point	

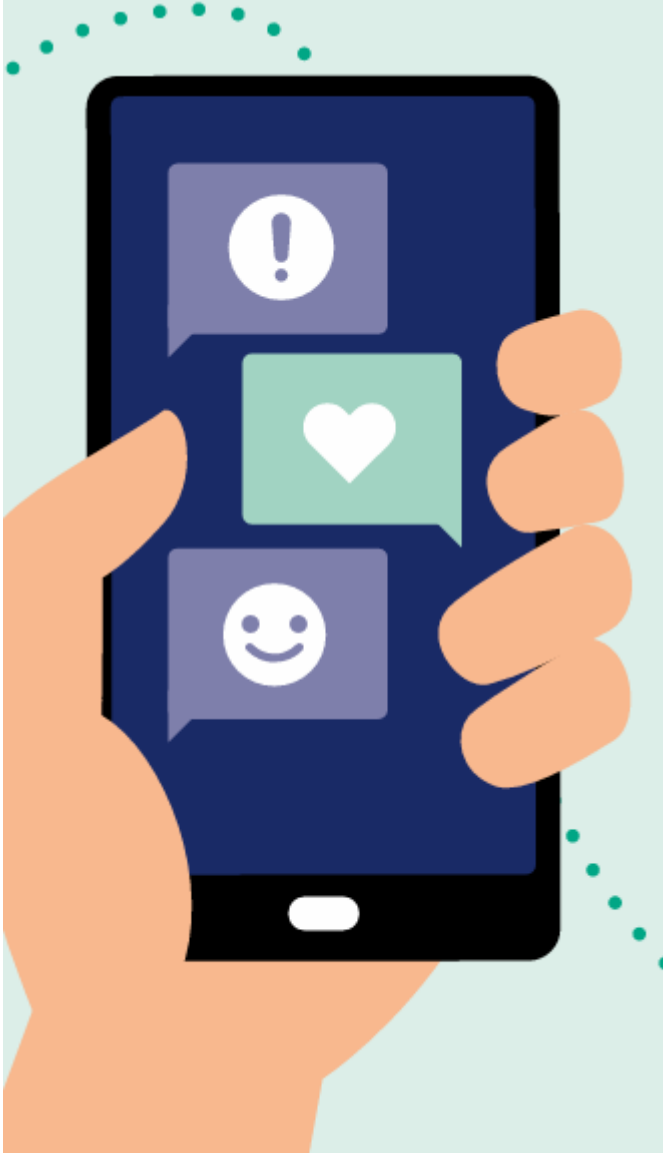




CHECKLIST

How I am taking action to help my child



MANAGING SCREEN TIME



-  **SCREEN TIME** PAGE 8
-  **WHEN BAD THINGS HAPPEN** PAGE 12
-  **ARTIFICIAL INTELLIGENCE** PAGE 16

FINAL MESSAGE

Your role cannot be outsourced. Not to schools, not to politicians, not to tech companies. No one knows your child like you do.

Meet them with patience and compassion — and extend the same compassion to yourself. Stay curious, stay involved, and keep the conversation open.