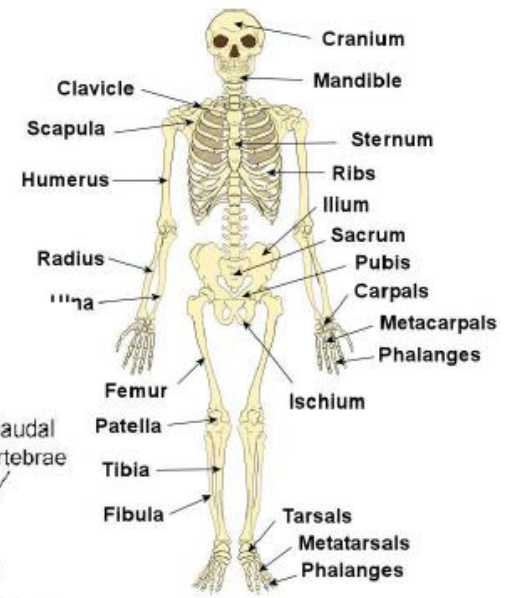
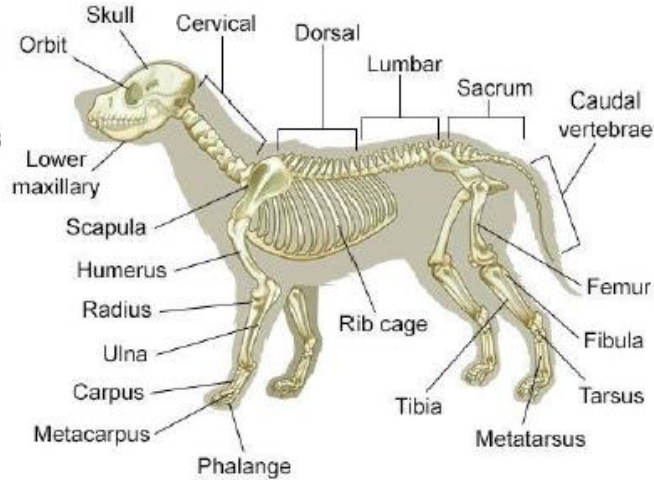
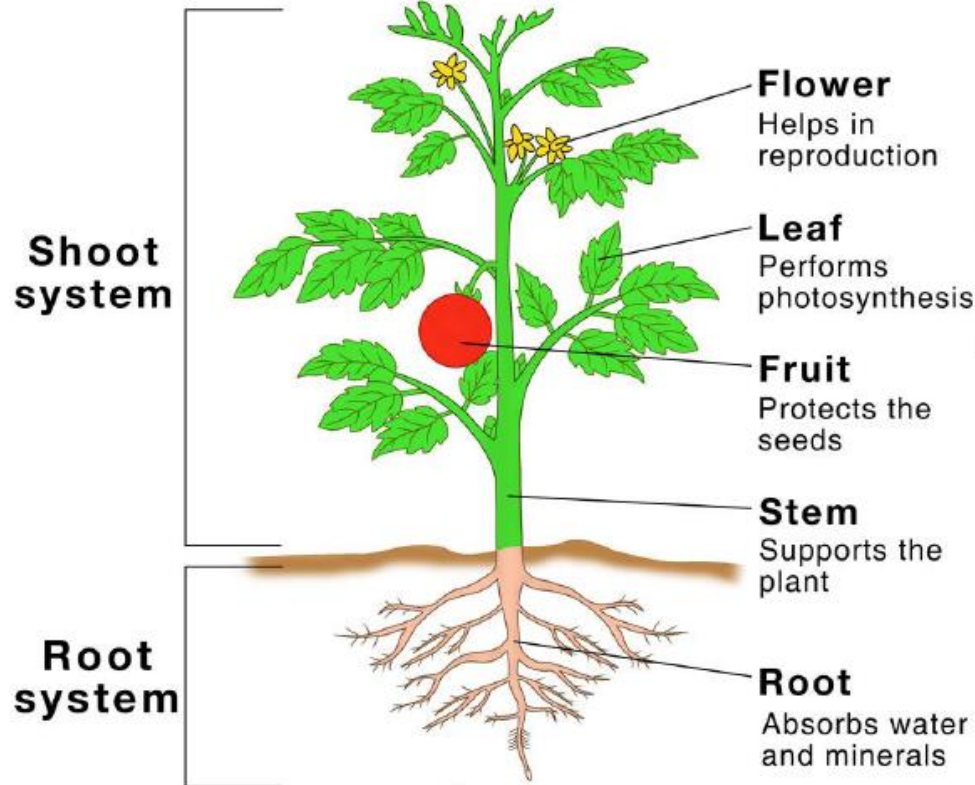




# Parts of a Plant



**Exoskeleton**– hard outer covering that protects, covers and allows for muscle attachment.





## Key vocabulary

<b>Skeleton</b>	A framework of bones that support the body of a living thing.
<b>Muscle</b>	A bundle of fibrous tissues in an animal that contract in order to produce movement.
<b>Contract</b>	Become shorter or tighter.

*What should I plant in my garden to attract wildlife?*



Prior Learning (Year 2)	Local links	Unit Objectives
<p><b>Food chain</b></p>  	<p>What common flowers, plants and trees are there around Newton?</p> <p>What different animals (including insects with exoskeletons) can be found around Newton?</p> <p>Bug house (including skeletons)</p> <p><u>World Museum- Liverpool</u></p>	<p>Pupils should be taught to:</p> <ul style="list-style-type: none"> <li>- identify and describe the functions of different parts of flowering plants: roots, stem/trunk, leaves and flowers</li> <li>- identify that humans and some other animals have skeletons and muscles for support, protection and movement.</li> </ul> <hr/> <p><b>Where next?</b> What do our bodies do with the food we eat? (Year 4)</p> 