

NORTH WALKDEN PRIMARY – Aiming High, Striving for Excellence

Newsletter – 20th March 2026

Headteacher’s Weekly Awards - WELL DONE TO OUR STARS OF THE WEEK

All the children get a special mention in the Achievement assembly on Friday and will bring home a certificate detailing the reason for their award.

Nursery	Reception	Year 1	Year 2	Year 3	Year 4	Year 5	Year 6
Ralph Ayan	Lydia Ini	Thea Neitus	Emad Olivia	Spencer Jamie	Fahida Brantley	Ivy Abraham	Jason Roxanne

We’ve had a wonderful week in school, with lots to celebrate across all year groups. A particular highlight was our Parents’ Evenings on Monday and Wednesday. It was fantastic to see so many families attending, and we would like to thank all parents and carers for your continued support and for taking the time to meet with teachers.

Our Nursery Stay and Play session was also a great success, with a fantastic turnout. It was lovely to welcome families into school and see the children so engaged in their learning and play.

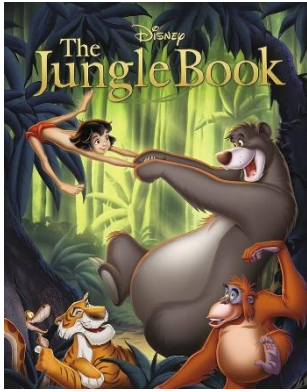
Year 5 enjoyed a special visit to St John’s, where they learned more about Easter and its importance. It was a valuable and enriching experience for the children.

Looking ahead to next week, we have lots of exciting Easter activities planned. Please make sure to check the diary dates below so you don’t miss anything.

TUESDAY 31 ST MARCH	EYFS AND KEY STAGE 1 EASTER HAT PARADE	BRING DECORATED HATS TO SCHOOL	EYFS AND KEY STAGE 1 CHILDREN
WEDNESDAY 1 ST APRIL	EASTER HAMPER RAFFLE DRAW	2PM	SCHOOL COUNCIL
WEDNESDAY 1 ST APRIL	KEY STAGE 2 EGG DISPLAY COMPETITION	BRING ANY EGG DISPLAYS TO THE HALL 9AM	KEY STAGE 2 CHILDREN WELCOME TO ENTER



Raffle tickets are still on sale, and we’re building lots of excitement around our three chocolate hampers up for grabs! If you have purchased tickets online, these will be sent home with children next week ahead of the draw on Wednesday.



Jungle Book Performance: On Tuesday 31st March the whole school will be watching a wonderful performance from M&M Theatre Company - we are asking for a contribution of £2 per pupil to contribute towards the costs which are also subsidised by school. This is a family-friendly, energetic production based on Rudyard Kipling's classic story. The production features colourful costumes, a mix of singing, and performances and a workshop element for the audience. This will be a fantastic experience for the children. If you have not already done so please can you make your contribution on the Evolve Hub. The payment will disappear once it has been made so if it is still listed we would really appreciate your support. Thank you

Non Uniform Day: The last day of term is non-uniform day in exchange for a £1 donation. If your child wishes to come in their own clothes please send in your £1 donation towards schools fundraising. If it is easier for you, you can pay for all 6 non-uniform days on Evolve. This payment will disappear once paid so if it is still showing you can make life easier and do it all in one go! Thank you for your support.



This will be our final newsletter of the term. We will break up for the Easter holidays next Thursday at 2:00pm. Please remember to collect your children promptly at this time. Playkids After School Club will be available from 2:00pm for families who use this service.

We would like to wish all our families a wonderful and restful Easter break.

Children should be in school by 8.45am if you arrive after this time you are late!

WELL DONE TO YEAR 1, YEAR 2, AND YEAR 6 WHO ACHIEVED THEIR CLASS ATTENDANCE TARGET

Well done to Reception and Year 4 for achieving their attendance target – let's see if every class can achieve this next week!

Our attendance policy is on our website here

<https://www.northwalkdenprimaryschool.co.uk/page/policies/25098>

Punctuality and Attendance

Please remember school starts at **8:45am** – Doors will be open from 8.35am. Children arriving after 8.55am must enter through the school office and be signed in.

Last week's attendance – Our School target and individual pupil target is 96%

	Nursery	Reception	Year 1	Year 2	Year 3	Year 4	Year 5	Year 6	Whole School
Class attendance award	86	94	98 SILVER	96 BRONZE	93	92	86	97 SILVER	93
Late arrivals	4	1	8	4	11	4	6	8	46

School communication: Please ensure you are logged into your Arbor app so that you receive all the important messages we send out. If you need to download the app again, its 'Arbor' and then you can simply go to the log in page and click forgot password to reset your log in details.

Contacting School: If you wish to contact school then you can email us on northwalkdenprimary.pupilcontact@northwalkdenprimaryschool.co.uk and we will respond the same day or call 0161 921 2921.

DIARY DATES: Whilst we aim not to change dates once set sometimes circumstances mean we have to, please always check the dates each week and update your plans accordingly. Any changes will be highlighted.

DATE	ACTIVITY/EVENT	TIME	CLASS/STAFF
TUESDAY 31 ST MARCH	JUNGLE BOOK THEATRE PERFORMANCE £2 DONATION PER CHILD	9.15AM	NURSERY-YEAR 6
TUESDAY 31 ST MARCH	EYFS AND KEY STAGE 1 EASTER HAT PARADE	BRING DECORATED HATS TO SCHOOL	EYFS AND KEY STAGE 1 CHILDREN
WEDNESDAY 1 ST APRIL	EASTER HAMPER RAFFLE DRAW	2PM	SCHOOL COUNCIL
WEDNESDAY 1 ST APRIL	KEY STAGE 2 EGG DISPLAY COMPETITION	BRING ANY EGG DISPLAYS TO THE HALL 9AM	KEY STAGE 2 CHILDREN WELCOME TO ENTER
THURSDAY 2 ND APRIL	NON UNIFORM DAY FOR £1 DONATION	ALL DAY	WHOLE SCHOOL
THURSDAY 2 ND APRIL	SCHOOL CLOSSES FOR EASTER HOLIDAY	2PM	WHOLE SCHOOL
DATE	ACTIVITY/EVENT	TIME	CLASS/STAFF
MONDAY 20 TH APRIL	SCHOOL RE -OPENS	8.45AM	WHOLE SCHOOL
TUESDAY 21 ST APRIL	YEAR 4 FIELDWORK TRIP TO SEVEN ACRES – trip letter has been emailed to parents. Contribution of £5 requested. Consent must be given on Arbor under 'Activities'	9.00 – 3pm	YEAR 4
WEDNESDAY 22 ND APRIL	CLASS PHOTOS	AM	WHOLE SCHOOL
WEDNESDAY 29 TH APRIL	YEAR 2 FAMILY TIME WORKSHOP	9-10	YEAR 2 PARENTS WELCOME
MONDAY 4 TH MAY	SCHOOL CLOSED FOR BANK HOLIDAY	SCHOOL CLOSED	SCHOOL CLOSED
THURSDAY 7 TH MAY	NURSERY STAY AND PLAY	9AM /1PM ON A BOOKING SYSTEM	NURSERY PARENTS WELCOME
WEEK BEGINNING 11 TH MAY	KEY STAGE 2 SATS WEEK	ALL WEEK	YEAR 6
FRIDAY 15 TH MAY	ALTRU DRAMA WORKSHOPS IN SCHOOL YEAR 4- MAYANS YEAR 2- CASTLES	AM-Y4 PM Y2	YEAR 4 AND 2
FRIDAY 15 TH MAY	YEAR 3 TRIP TO 'BRING YER WELLIES' Please ensure you have given consent on Arbor and paid your contribution on Evolve.	9-3PM	YEAR 3
THURSDAY 21 ST MAY	YEAR 1 CHURCH VISIT	1-3	YEAR 1

THURSDAY 21 ST MAY	SCHOOL CLOSSES FOR HALF TERM	3.15PM	WHOLE SCHOOL
WEDNESDAY 3 RD JUNE	SCHOOL RE-OPENS	8.45AM	WHOLE SCHOOL
FRIDAY 5 TH JUNE	COLOURED ITEM DONATION FOR SUMMER FAIR STALL IN EXCHANGE FOR EXTRA PLAY	ALL DAY	EACH CLASS TO BRING A DIFFERENT COLOURED LUXURY ITEM- TBC
WEDNESDAY 10 TH JUNE	YEAR 1 FAMILY TIME WORKSHOP	9-10	YEAR 1 PARENTS WELCOME
FRIDAY 12 TH JUNE	YEAR 6 TIME ODYSSEY TRIP - Please ensure you have given consent on Arbor and paid your contribution on Evolve.	9-3	YEAR 6
FRIDAY 12 TH JUNE	BOTTLE DONATION FOR SUMMER FAIR IN EXCHANGE FOR EXTRA PLAY	ALL DAY	WHOLE SCHOOL
WEEK BEGINNING 15 TH JUNE	YEAR 6 BIKEABILITY	ALL WEEK VARIOUS TIMES AND GROUPS	YEAR 6
MONDAY 15 TH JUNE	YEAR 5 WATERSPORTS DAY AT SALFORD QUAYS - Please ensure you have given consent on Arbor and paid your contribution on Evolve.	9-3	YEAR 5
TUESDAY 16 TH JUNE	YEAR 5 WATERSPORTS DAY AT SALFORD QUAYS	9-3	YEAR 5
WEDNESDAY 17 TH JUNE	RECEPTION CLASS ASSEMBLY	9AM	RECEPTION PARENTS WELCOME
THURSDAY 18 TH JUNE	CHOCOLATE DONATION FOR SUMMER FAIR IN EXCHANGE FOR EXTRA PLAY	ALL DAY	WHOLE SCHOOL
THURSDAY 18 TH JUNE	YEAR 2 CHURCH VISIT	1-3	YEAR 2
FRIDAY 19 TH JUNE	SUMMER FAIR AT SCHOOL	3.30-5.30PM	EVERYBODY WELCOME – PLEASE COME ALONG AND SUPPORT !!
TUESDAY 23 RD JUNE	YEAR 5 WATERSPORTS AT SALFORD QUAYS	9-3	YEAR 5
TUESDAY 23 RD JUNE	YEAR 4 TRIP TO LLANDUDNO - Please ensure you have given consent on Arbor and paid your contribution on Evolve.	8-5PM	YEAR 4
WEDNESDAY 24 TH JUNE	NEW NURSERY AND RECEPTION PARENTS MEETING AND VISITING THE CLASSROOM	5PM	NEW PARENTS
THURSDAY AND FRIDAY 25 TH AND 26 TH JUNE	YEAR 6 HIGH SCHOOL TRANSITION DAYS FOR MOST SCHOOL- PARENTS WILL BE ADVISED	ALL DAY	YEAR 6 CHILDREN DEPENDANT ON HIGH SCHOOL
WEEK BEGINNING 29 TH JUNE	NORTH WALKDEN'S 100 TH BIRTHDAY CELEBRATION WEEK OF FUN	ALL WEEK	ALL CLASSES
MONDAY 29 TH JUNE	NEW TO NURSERY PHONECALLS	1PM	RK

MONDAY 29 TH JUNE	FRONT ROW CONCERT FOR PARENTS WHOSE CHILDREN HAVE LUNCH TIME MUSIC LESSONS	2.45PM	PARENTS INVITED
TUESDAY 30 TH JUNE	NEW TO NURSERY PHONECALLS	1PM	RK
THURSDAY 2 ND JULY	YEAR 6 VISIT TO CHURCH	1-3PM	YEAR 6
THURSDAY 2 ND JULY	NEW TO RECEPTION PHONECALLS	1PM	CLB
FRIDAY 3 RD JULY	100 YEAR BIRTHDAY TEA PARTY	1-3PM	CHILDREN STAFF AND GOVERNORS
MONDAY 6 TH JULY	ONLINE SAFETY SESSION FOR YEAR 5 AND 6 – Parents are invited to the assembly and for an additional session afterwards to explore trends, usage and safety controls	9AM	YEAR 5 AND 6 Parents welcome
TUESDAY 7 TH JULY	NEW NURSERY CHILDREN X13 TO VISIT SCHOOL	9.15-10.15AM	NEW NURSERY
WEDNESDAY 8 TH JULY	NEW TO RECEPTION CHILDREN VISIT SCHOOL	9.15-10.15AM	NEW TO RECEPTION
THURSDAY 9 TH JULY	NEW NURSERY CHILDREN X13 TO VISIT SCHOOL	9.15AM-10.15AM	NEW NURSERY
THURSDAY 9 TH JULY	YEAR 3 TRIP TO CHESTER AND THE ROMAN MUSEUM - trip letter has been emailed to parents. Consent must be given on Arbor under 'Activities'	9-3PM	YEAR 3
THURSDAY 9 TH JULY	EYFS TEDDY BEARS PICNIC	TBC	EYFS CHILDREN
FRIDAY 10 TH JULY	ANNUAL REPORTS ISSUED TO PARENTS	3.15PM	WHOLE SCHOOL
TUESDAY 14 TH JULY	YEAR 2 TRIP TO MANCHESTER AIRPORT AVIAITON PARK – TRIP LETTER WILL BE EMAILED SOON	9-3PM	YEAR 2
TUESDAY 14 TH JULY	YEAR 6 LEAVERS SHOW FOR PARENTS	9.15AM	YEAR 6
WEDNESDAY 15 TH JULY	KEY STAGE 1 SPORTS MORNING	9.15AM	KEY STAGE 1 PARENTS WELCOME
WEDNESDAY 15 TH JULY	NEW TO RECEPTION CHILDREN VISIT 2	9.15-10.15AM	NEW TO RECEPTION CHILDREN
WEDNESDAY 15 TH JULY	YEAR 6 LEAVERS SHOW FOR PARENTS	2.15PM	YEAR 6
THURSDAY 16 TH JULY	EYFS SPORTS MORNING	9.15AM	EYFS PARENTS WELCOME
FRIDAY 17 TH JULY	KEY STAGE 2 SPORTS MORNING	9.15AM	KS2 PARENTS WELCOME
MONDAY 20 TH JULY	MOVE UP MORNING FOR ALL CHILDREN	9-10.30AM	WHOLE SCHOOL
MONDAY 20 TH JULY	KEY STAGE 2 TALENT SHOW	1-3	KEY STAGE 2 CHILDREN WELCOME TO AUDITION
TUESDAY 21 ST JULY	BUMP AND BOUNCE FUN DAY FOR EYFS AND KS1	ALL DAY	EYFS AND KS1
TUESDAY 21 ST JULY	KEY STAGE 2 WATERPLAY AND GAMES AFTERNOON	1-3	KEY STAGE 2
WEDNESDAY 22 ND JULY	YEAR 6 LEAVERS ASSEMBLY	9AM	YEAR 6 PARENTS WELCOME

WEDNESDAY 22 ND JULY	NON UNIFORM DAY FOR £1 DONATION	ALL DAY	WHOLE SCHOOL
WEDNESDAY 22 ND JULY	YEAR 6 END OF SCHOOL CELEBRATION	10-3- VENUE TO BE CONFIRMED	YEAR 6
WEDNESDAY 22 ND JULY	SCHOOL CLOSES FOR SUMMER	2PM	WHOLE SCHOOL

Kind regards, Mrs Warburton