

# The Friday Post



Friday, 03 July 2026



[www.clivecofeprimaryschool.co.uk](http://www.clivecofeprimaryschool.co.uk)  
[admin@clive.shropshire.sch.uk](mailto:admin@clive.shropshire.sch.uk)

## WHAT'S NEW THIS WEEK?

- SMAG summer holiday activities
- Family Grapevine
- Sports morning
- Holiday Club
- Transition days
- People's Emergency Briefing
- Diary dates
- Clive Connect
- School Spider

	PE	PE	Woodland School
Dormouse	Monday (swimming)	Friday	Thursday
Red Squirrel	Friday		Friday
Hedgehog	Thursday		Wednesday
Badger	Friday	Thursday	Wednesday

## MENU

w/c 6<sup>th</sup> July: Week TWO

Please note the change in menu. Menus are available at [Clive CofE Primary School: School Meals](#).

## WRAP AROUND CARE

It is **essential** that children are booked in through the online form. Click on the links below:

**SUMMER (2) TERM 2026:**

[BREAKFAST](#) [AFTER SCHOOL CLUB](#)

## REPORTING CONCERNS ABOUT A CHILD

To report a concern call Shropshire Council's First Point of Contact (FPOC) - **0345 678 9021**

## DIARY DATES

Sat 4<sup>th</sup> July - FOCS Summer Fair  
 Mon 6<sup>th</sup> & 7<sup>th</sup> July - Y6 to Y7 transition days  
 Mon 6<sup>th</sup> &/or Tues 7<sup>th</sup> - Y6 transition days  
 Wed 15<sup>th</sup> July - Musical extravaganza @3.30pm  
 Thurs 23<sup>rd</sup> July - Leavers' Service @ **2.15pm**  
**Thursday 23<sup>rd</sup> July - End of Term**  
 Wednesday 2<sup>nd</sup> September - New academic year starts

## HOLIDAY CLUB

Holiday Club will be running at Prees School during the summer holiday:  
 Friday 24<sup>th</sup> July  
 27-31 July, 3-7 August and 10-14 August.  
 9am-3pm.  
 Please contact the office to book.

## TRANSITION DAYS

Next Monday (6<sup>th</sup>) and Tuesday (7<sup>th</sup>), most of Y6 will be attending their secondary schools for transition days. We shall therefore take advantage of this and move into our new classrooms and classes on **Tuesday**. We shall also be welcoming some new children into Reception.

The children should go to their new classes when they arrive:

current Reception to Red Squirrel, current Y2/3 to Hedgehog (current Badger Class room), current Y4/5 to Badger Class (current Hedgehog room).

At the end of the day you are welcome to meet your child's new teacher and have a chat with them at 3.05pm. Mr Carter will be in school that day too.

## STAR PUPILS

Well done to all the children who took part in Sports Morning. They all did really well in their activities and demonstrated positive sportsmanship and support for their teammates. Congratulations to Wythen who won the house cup this year!!



## SCHOOL SPIDER

Since we have moved our Managed Information System (pupil details etc), our website provider is advising parents to uninstall the School Spider app, empty cookies and cache data before reinstalling the School Spider App. An invite email will be sent to enable you to login again. Once this is done, you will be able to notify absences, upload photos and access the smartphone messaging service again.



## CLIVE CONNECT

Clive Connect is an opportunity for parents and school to meet together to co-produce policies and procedures to ensure inclusivity for **all** members of our school community. We had to postpone the last meeting so the rearranged date is Wednesday 8<sup>th</sup> July, 9am. **ANYONE** is welcome to come along and work with us. We shall be discussing the responses to the uniform survey and the uniform policy.

## LIBRARY BOOK AMNESTY

Please could all library books be returned to school.

*Our value for the term is 'Respect'.*

### POTS AND PANS

If you have any old saucepans/fryingpans, wooden spoons for EYFS, they would be most delighted to receive them for musical instruments!

# Watch. Chat. Act.



People's  
Emergency  
Briefing

Screenings everywhere for everyone

Concerned about Climate Change? Worried how the climate is impacting on daily lives? Need a dose of Hope? The People's Emergency Briefing may just be for you! A screening has been arranged for **Monday 13<sup>th</sup> July**, 645 for 7pm start at Clive Village Hall. Tea and coffee at interval. ALL WELCOME

### SUMMER HOLIDAYS AT SHREWSBURY MUSEUM

Check out the SMAG [website](#) for exciting activities to get involved with over the summer holiday!

### FAMILY GRAPEVINE

The Summer/Autumn 2026 issue of the Shrewsbury & Telford Family Grapevine is out now!

It is full of useful information, with a guide to what's on for families, and the directory full of fun activities from toddler groups to sports clubs, plus childcare, party entertainers, support and lots more.

For those who don't receive a print copy, you can either pick up a free copy at family venues, leisure centres and libraries across the area, or you can access the full issue on our website:

<https://thefamilygrapevine.co.uk/shrewsbury-telford/magazine/the-shrewsbury-telford-family-grapevine-summer-autumn-2026/>

### WHAT'S ON?

FRIENDS OF  
CLIVE SCHOOL

PRESENTS A

# FREE SCHOOL DISCO

WITH **DJ DISCO DADDY**



**TUESDAY 14<sup>TH</sup> JULY,**  
STRAIGHT AFTER SCHOOL  
UNTIL 4.30PM



IN THE SCHOOL  
PLAYGROUND.



SNACK AND  
SQUASH INCLUDED.



PLEASE COMPLETE GOOGLE FORM  
BY **11<sup>TH</sup> JULY** TO RSVP.



CLIVE CE PRIMARY SCHOOL

# Summer Fete

FREE  
ENTRY

RENSHAW'S  
FIELD  
CLIVE

FUN FILLED FAMILY DAY OUT!

SATURDAY  
4TH JULY  
2026

GAMES ✦ LIVE MUSIC  
STALLS ✦ INFLATABLES  
BAR ✦ FACEPAINTING  
FOOD ✦ TOMBOLA

3.00PM  
TIL  
LATE

FEATURING  
LOCAL BANDS:

MEDUSA WAS RIGHT  
RUNAWAY BRIDES  
ROSCO AND THE  
WOLFPACK

focs@clive.shropshire.sch.uk

# SUMMER 4 MASH!



**ROCK!**  
Music School



**LIVE! IN CONCERT**

Sat 11th July | Doors: 6:00pm,  
The Barnes Theatre

Shrewsbury School  
Kingsland, Shrewsbury, SY3 7BA

All Ticket Proceeds Donated to:  
The Parent Carer Council Shropshire



Get Tickets!

[www.rockmusicschool.co.uk](http://www.rockmusicschool.co.uk)  
[www.paccshropshire.org.uk](http://www.paccshropshire.org.uk)

## REGULAR EVENTS & INFORMATION

# SHREWSBURY REPAIR CAFE

Your radio doesn't work?  
Your jumper has a hole in it?  
Your ornament is broken?

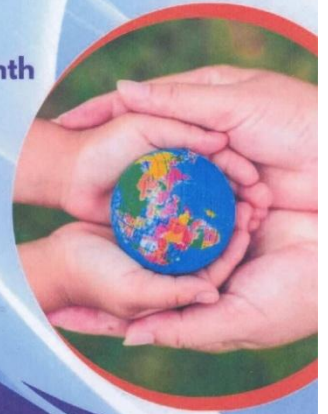


Bring it to the repair cafe  
Have it fixed & repaired  
Refreshments & cake

Shrewsbury United Reformed Church  
Coleham Head

3<sup>rd</sup> Saturday every month  
10am till 2pm

[shrewsrepaircafe](https://www.facebook.com/shrewsrepaircafe)



Repairing the World  
One Item at a Time

# Back2basics FAMILY FEST

AUGUST 3RD & 4TH

At Wellness Woodlands, Highley, Shropshire

£99 inc camping

£33 Family day ticket

Ticket inc 1 free Stone Age workshop

2 full days of outdoor fun & wild skills for  
all the family

More info &  
tickets



- |               |                           |
|---------------|---------------------------|
| Workshops in  | Wellness                  |
| Stone Age     | Wood fired saunas         |
| Bushcraft     | Yoga                      |
| Forest School | Breath work               |
| Nature Crafts | Demos, talks & loads more |
| Graffiti      |                           |
| Singing       |                           |

Wood fired pizzas  
Evening BBQ  
Bar  
Live music

For more info

email: [info@outback2basics.co.uk](mailto:info@outback2basics.co.uk)



# COFFEE & CHAT Wem



3<sup>rd</sup> Thursday of each  
month



13.00-14.45

Wem Library, 3 High St, Wem, Shrewsbury SY4 5AA

You can get free information, advice and support on all aspects of family life, at our Early Help Family Drop-In. You can chat, have a coffee and see how we can help. We support families with children aged 0-19 years (up to 25 years for young people with special educational needs and disabilities) We aim to make it easier for you to ask for help and get support when you need it.

REFRESHMENTS WILL BE PROVIDED

\*PLEASE BRING YOUR OWN SEALED CUP/TRAVEL MUG\*



[shropshire.gov.uk/early-help](http://shropshire.gov.uk/early-help)





Info, advice and support,  
for families in Shropshire

Find us on:



Sign up to receive alerts from your local policing teams [www.neighbourhoodmatters.co.uk](http://www.neighbourhoodmatters.co.uk)



## The SEND Local Offer



Lots of information and support for children and young people with SEND and their families, including:

- Education
- Health and wellbeing
- Family support
- Social care
- Preparing for adulthood
- Early help
- Things to do
- Education, health and care plan (EHCP)
- Travel and transport
- Financial support

[local.offer@shropshire.gov.uk](mailto:local.offer@shropshire.gov.uk) 0345 678 9063  
[www.shropshire.gov.uk/the-send-local-offer/](http://www.shropshire.gov.uk/the-send-local-offer/)



If you need help accessing the Local Offer please speak to your school or local library.

