

# The Friday Post

Friday, 26 June 2026



[www.clivecofeprimaryschool.co.uk](http://www.clivecofeprimaryschool.co.uk)  
[admin@clive.shropshire.sch.uk](mailto:admin@clive.shropshire.sch.uk)



## WHAT'S NEW THIS WEEK?

- SMAG summer holiday activities
- Classes - 2026/27
- Sports morning
- Holiday Club
- Transition days
- Diary dates
- School Spider

	PE	PE	Woodland School
Dormouse	Monday (swimming)	Friday	Thursday
Red Squirrel	Friday	Tuesday (swimming)	Friday
Hedgehog	Thursday		Wednesday
Badger		Thursday	Wednesday

## MENU

w/c 29<sup>th</sup> June 2026: Week ONE

Please note the change in menu. Menus are available at [Clive CofE Primary School: School Meals](#).

## WRAP AROUND CARE

It is **essential** that children are booked in through the online form. Click on the links below:

**SUMMER (2) TERM 2026:**

[BREAKFAST](#) [AFTER SCHOOL CLUB](#)

## REPORTING CONCERNS ABOUT A CHILD

To report a concern call Shropshire Council's First Point of Contact (FPOC) - **0345 678 9021**

## DIARY DATES

Tues 30<sup>th</sup> June - Hedgehog to Sabrina & River Severn

Thurs 2<sup>nd</sup> July - Red Squirrels to Rhyl

Sat 4<sup>th</sup> July - FOCS Summer Fair

Mon 6<sup>th</sup> & 7<sup>th</sup> July - Y6 to Y7 transition days

Mon 6<sup>th</sup> &/or Tues 7<sup>th</sup> - Y6 transition days

Wednesday 15<sup>th</sup> July - Musical extravaganza @3.30pm

Thursday 23<sup>rd</sup> July - End of Term

## SUMMER HOLIDAYS AT SHREWSBURY MUSEUM

Check out the SMAG [website](#) for exciting activities to get involved with over the summer holiday!

## HOLIDAY CLUB

Holiday Club will be running at Prees School during the summer holiday:

Friday 24<sup>th</sup> July

27-31 July, 3-7 August and 10-14 August.

9am-3pm.

Please contact the office to book.

## CLASSES - 2026/27

We are pleased to welcome Mr T. Carter as Assistant Headteacher from 1<sup>st</sup> September. Thankyou to Mrs Watts who has taken on this role since 2018.

Class teachers for the next academic year:

Dormouse (N & R): Mrs S. Watts

Red Squirrel (Y1 & 2): Miss L. Anderson

Hedgehog (Y3 & 4): Miss L. Cordey

Badger (Y5 & 6): Mr T. Carter

## TRANSITION DAYS

Next Monday (6<sup>th</sup>) and Tuesday (7<sup>th</sup>), most of Y6 will be attending their secondary schools for transition days. We shall therefore take advantage of this and move into our new classrooms and classes on **Tuesday**. We shall also be welcoming some new children into Reception.

## STAR PUPIL

Congratulations to Beatrix, Lily, Darcey & Tillie-Beau who all got their national accredited dance exam results this week bagging high merits and distinctions all the way! (& Oscar too!!) an amazing achievement. Well done all of you!!



## SPORTS MORNING

Sports morning is now scheduled for next Monday (29<sup>th</sup>). We aim to start at about 9.15am. Bring a chair and reserve your spot! It is much easier for everyone if the children wear a t-shirt of their house colour



**Blakemore - Blue**

**Leasow - Green**

**Sherwood - Red**

**Wythen - Purple**

## SCHOOL SPIDER

Since we have moved our Managed Information System (pupil details etc), our website provider is advising parents to uninstall the School Spider app, empty cookies and cache data before reinstalling the School Spider App. An invite email will be sent to enable you to login again. Once this is done, you will be able to notify absences, upload photos and access the smartphone messaging service again.



Our value for the term is 'Respect'.

# WHAT'S ON?

## Wem Repair Café

27<sup>th</sup> June 10-12am 2026 Wem Library

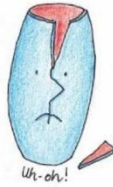
Bring along your

Small electricals, Clothes and textiles, Bikes, Toys,

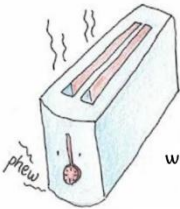
Furniture or anything else that might need repairing.



Our Volunteers will offer advice, try to repair and revive your items saving you money and reducing waste going to landfill.



Enjoy a cuppa, cookies or cake while you wait.



waca@wemareclimateaction.org.uk



# SUMMER 4 MASH!



## ROCK! Music School



### LIVE! IN CONCERT

Sat 11th July | Doors: 6:00pm, The Barnes Theatre

Shrewsbury School Kingsland, Shrewsbury, SY3 7BA

All Ticket Proceeds Donated to: The Parent Carer Council Shropshire



Get Tickets!

www.rockmusicschool.co.uk  
www.paccshropshire.org.uk

# CLIVE CE PRIMARY SCHOOL Summer Fete



FREE ENTRY

RENSHAW'S FIELD CLIVE

SATURDAY 4TH JULY 2026

3.00PM TIL LATE

FUN FILLED FAMILY DAY OUT!

- GAMES \* LIVE MUSIC
- STALLS \* INFLATABLES
- BAR \* FACEPAINTING
- FOOD \* TOMBOLA

FEATURING LOCAL BANDS:  
MEDUSA WAS RIGHT  
RUNAWAY BRIDES  
ROSCO AND THE WOLFPACK

focs@clive.shropshire.sch.uk

# Back2basics FAMILY FEST

AUGUST 3RD & 4TH

At Wellness Woodlands, Highley, Shropshire

£99 inc camping

£33 Family day ticket

Ticket inc 1 free Stone Age workshop

2 full days of outdoor fun & wild skills for all the family

More info & tickets



- |               |                           |
|---------------|---------------------------|
| Workshops in  | Wellness                  |
| Stone Age     | Wood fired saunas         |
| Bushcraft     | Yoga                      |
| Forest School | Breath work               |
| Nature Crafts | Demos, talks & loads more |
| Graffiti      |                           |
| Singing       |                           |

Wood fired pizzas  
Evening BBQ  
Bar  
Live music

For more info

email: info@outback2basics.co.uk

## REGULAR EVENTS & INFORMATION

# SHREWSBURY REPAIR CAFE

Your radio doesn't work?  
Your jumper has a hole in it?  
Your ornament is broken?

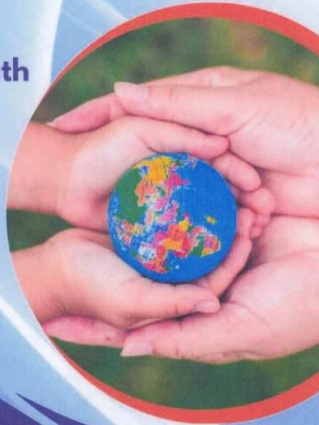


Bring it to the repair cafe  
Have it fixed & repaired  
Refreshments & cake

Shrewsbury United Reformed Church  
Coleham Head

3<sup>rd</sup> Saturday every month  
10am till 2pm

 shrewsrepaircafe



Repairing the World  
One Item at a Time

Shropshire  
**family**  
Information Service

Info, advice and support,  
for families in Shropshire

Find us on:



 Shropshire  
Council



Sign up to receive alerts from your local policing  
teams [www.neighbourhoodmatters.co.uk](http://www.neighbourhoodmatters.co.uk)

 West Mercia  
POLICE

## The SEND Local Offer



Lots of information and support for children and  
young people with SEND and their families, including:

- Education
- Health and wellbeing
- Family support
- Social care
- Preparing for adulthood
- Early help
- Things to do
- Education, health and care plan (EHCP)
- Travel and transport
- Financial support

[local.offer@shropshire.gov.uk](mailto:local.offer@shropshire.gov.uk) 0345 678 9063  
[www.shropshire.gov.uk/the-send-local-offer/](http://www.shropshire.gov.uk/the-send-local-offer/)



If you need help accessing the Local Offer  
please speak to your school or local library.

 Shropshire  
Council



# COFFEE & CHAT Wem



3<sup>rd</sup> Thursday of each  
month



13.00-14.45

Wem Library, 3 High St, Wem, Shrewsbury SY4 5AA

You can get free information, advice and support on all aspects of family life, at our Early Help Family Drop-In. You can chat, have a coffee and see how we can help. We support families with children aged 0-19 years (up to 25 years for young people with special educational needs and disabilities) We aim to make it easier for you to ask for help and get support when you need it.

**REFRESHMENTS WILL BE PROVIDED**

**\*PLEASE BRING YOUR OWN SEALED CUP/TRAVEL MUG\***

 Shropshire  
Libraries  
Learn imagine discover



[shropshire.gov.uk/early-help](http://shropshire.gov.uk/early-help)

 Shropshire  
Council