

# The Friday Post

Friday, 05 June 2026



[www.clivecofeprimaryschool.co.uk](http://www.clivecofeprimaryschool.co.uk)  
[admin@clive.shropshire.sch.uk](mailto:admin@clive.shropshire.sch.uk)



## WHAT'S NEW THIS WEEK?

- Meet the Staff - Miss Brayford
- Photographs
- Menu change
- Diary dates

	PE	PE	Woodland School
Dormouse	Monday (swimming)	Friday	Thursday
Red Squirrel		Tuesday (swimming)	Friday
Hedgehog	Thursday	Friday	Wednesday
Badger	Friday	Thursday	Wednesday

## MENU

w/c 8<sup>th</sup> June 2026: Week TWO

Please note the change in menu. Menus are available at [Clive CofE Primary School: School Meals](#).

**NEXT FRIDAY (12<sup>TH</sup>), THE MENU WILL BE SAUSAGE, CHIPS, VEG STICKS AND ICE CREAM OR FRUIT**

## WRAP AROUND CARE

It is **essential** that children are booked in through the online form. Click on the links below:

**SUMMER (2) TERM 2026:**

[BREAKFAST](#) [AFTER SCHOOL CLUB](#)

## REPORTING CONCERNS ABOUT A CHILD

To report a concern call Shropshire Council's First Point of Contact (FPOC) - 0345 678 9021

## DIARY DATES

Tues 9<sup>th</sup> June - Shropshire Sings (Y3/4)

Thur 11<sup>th</sup> June - Individual and class photos

Mon 15<sup>th</sup> June - Badgers to Whixall

Wed 17<sup>th</sup> June - Y5 to Thomas Adams

**Fri 26<sup>th</sup> June - Sports morning**

Tues 30<sup>th</sup> June - Hedgehog to Sabrina & River Severn

Thurs 2<sup>nd</sup> July - Red Squirrels to Rhyl

Sat 4<sup>th</sup> July - FOCS Summer Fair

Mon 6<sup>th</sup> & 7<sup>th</sup> July - Y6 to Y7 transition days

Mon 6<sup>th</sup> &/or Tues 7<sup>th</sup> - Y6 transition days

**Thursday 23<sup>rd</sup> July - End of Term**

## STAR PUPILS

Well done to Matthew for raising the alarm when he spotted his neighbour's garden on fire. He acted quickly and sensibly and saved the neighbourhood from a potentially more serious event. Praise from the fire service was well deserved. Well done Matthew!!



Congratulations to Julia who was awarded the Rotary Young Achiever of the Year for 2026! Well deserved Julia.



## MEET THE STAFF:

### Miss Brayford

Miss Brayford has been Executive Headteacher since 2018. She oversees two other schools in Fields Multi Academy Trust - Prees CE and Whixall CE Primary Schools. Prior to Whixall, Miss Brayford worked in a number of schools in Cheshire and North Shropshire. She is a great advocate for inclusion and supporting parents as well as maintaining high standards. As with all staff, she can be contacted through the school office (mark any correspondence for her attention).



We shall be having a reading for pleasure focus on this day but the children may wear pyjamas!

## PHOTOGRAPHS

The photographer will be in school next Thursday (11<sup>th</sup>) for individual, class and group photos. If you would like a family photo with a sibling who is not currently in school, please arrive at

**8.30am**. All children need to have school uniform for the day and bring change of clothes for PE or Woodland School. Y6 may wear their hoodies.



*Our value for the term is 'Respect'.*

## WHAT'S ON?



National  
Emergency  
Briefing

You are invited to a  
**FREE film screening**  
outlining the facts behind  
the Climate Emergency

**Friday 12<sup>th</sup> June 2026**  
**Wem Town Hall**  
**6.30pm for 7pm film**

Presented by Chris Packham with a cast of  
leading scientists and experts.

There will be opportunity for discussion after the  
50-minute film if you wish to stay. **Event ends 9pm**

Recommended suitable for age 16+

Bar Refreshments available



[www.nebriefing.org/](http://www.nebriefing.org/)

[wemareacclimateaction.org.uk](http://wemareacclimateaction.org.uk)  
[waca@wemareacclimateaction.org.uk](mailto:waca@wemareacclimateaction.org.uk)

A screening of this briefing film is being planned for  
Clive Village Hall in the near future.

## Sustainable gardening event

- An informal open gardens afternoon
- Share tips and ideas
- Make a mini bug hotel
- Garden tools swap & plant sales
- Tea, coffee and cake available
- Free entry
- All welcome



Sunday  
14 June  
2-4pm

No. 11 Tilley Village  
& 40 Tilley Road



Details at  
[wemareacclimateaction.org.uk](http://wemareacclimateaction.org.uk)



**TICKETS AVAILABLE NOW!**

**AMAZING LEGO DISPLAYS**

**NEW & RETIRED LEGO SETS**

**BUILD CHALLENGES**

**ACTIVITIES FOR ALL AGES**

**CHARITY TOMBOLA**

**MILLIONS OF LOOSE BRICKS**

**PLUS SO MUCH MORE!!**

**20<sup>TH</sup> JUNE**  
WREXHAM UNIVERSITY SPORTS CENTRE  
**WREXHAM BRICK FESTIVAL**  
MORE LEGO<sup>®</sup> THAN YOU CAN DREAM OF

**TICKETS ON SALE NOW!**

**20<sup>TH</sup> JUNE**  
WREXHAM UNIVERSITY SPORTS CENTRE  
**WREXHAM BRICK FESTIVAL**  
MORE LEGO<sup>®</sup> THAN YOU CAN DREAM OF

## REGULAR EVENTS & INFO

# SHREWSBURY REPAIR CAFE

Your radio doesn't work?  
Your jumper has a hole in it?  
Your ornament is broken?

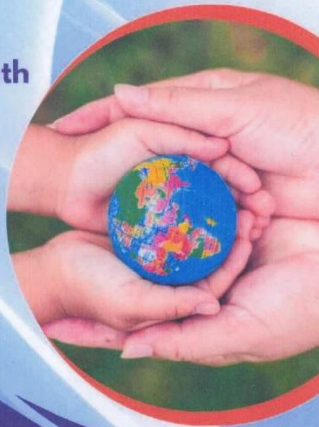


Bring it to the repair cafe  
Have it fixed & repaired  
Refreshments & cake

Shrewsbury United Reformed Church  
Coleham Head

3<sup>rd</sup> Saturday every month  
10am till 2pm

 shrewsrepaircafe



Repairing the World  
One Item at a Time

Shropshire  
**family**  
Information Service

Info, advice and support,  
for families in Shropshire

Find us on:



 Shropshire  
Council



Sign up to receive alerts from your local policing  
teams [www.neighbourhoodmatters.co.uk](http://www.neighbourhoodmatters.co.uk)

 West Mercia  
POLICE

## The SEND Local Offer



Lots of information and support for children and  
young people with SEND and their families, including:

- Education
- Health and wellbeing
- Family support
- Social care
- Preparing for adulthood
- Early help
- Things to do
- Education, health and care plan (EHCP)
- Travel and transport
- Financial support

[local.offer@shropshire.gov.uk](mailto:local.offer@shropshire.gov.uk) 0345 678 9063  
[www.shropshire.gov.uk/the-send-local-offer/](http://www.shropshire.gov.uk/the-send-local-offer/)



If you need help accessing the Local Offer  
please speak to your school or local library.

 Shropshire  
Council



# COFFEE & CHAT Wem



3<sup>rd</sup> Thursday of each  
month



13.00-14.45

Wem Library, 3 High St, Wem, Shrewsbury SY4 5AA

You can get free information, advice and support on all aspects of family life, at our Early Help Family Drop-In. You can chat, have a coffee and see how we can help. We support families with children aged 0-19 years (up to 25 years for young people with special educational needs and disabilities) We aim to make it easier for you to ask for help and get support when you need it.

**REFRESHMENTS WILL BE PROVIDED**

**\*PLEASE BRING YOUR OWN SEALED CUP/TRAVEL MUG\***

 Shropshire  
Libraries  
Learn imagine discover



[shropshire.gov.uk/early-help](http://shropshire.gov.uk/early-help)

 Shropshire  
Council