

# **Clive & Grinshill Newsletter**



**CLIVE VILLAGE HALL GARDEN**

**ISSUE No 273**

**JUNE/JULY 2026**

## Who's Who

(01939 unless otherwise stated)

### Clive & Grinshill Newsletter

Editor	Val Walters	220302	val.walters1945@gmail.com
Grinshill Area	Tish Weston	220291	tishwestonlunt@gmail.com
Treasurer	Tim Parsons	220372	tjppoynton@yahoo.co.uk

### **Organisation & Contact**

#### Clive and Grinshill

Vicar:	Paul Cawthorne	07981 345820	paulcawthorne1966@gmail.com
Benefice Lay Reader:	Jayne Hill	077614 90758	gjjhill@yahoo.co.uk
Women's Institute:	Liz Griffiths	220737	lizgriffiths56@hotmail.co.uk
Severn Hospice Support Group:	Val Walters	220302	val.walters1945@gmail.com
What's on Clive & Grinshill:	Val Walters	220302	val.walters1945@gmail.com

#### Clive

<b>Bowling Club:</b>	Len Flack	220172	k.flack@btinternet.com
<b>Churchyard Conservation:</b>	Bob Griffiths	220737	
<b>Clive Medical Practice:</b>	Zoe Bishop	220295	clive.ooh@nhs.net
<b>Clive Parish Council:</b>	Lydia Bardsley	01691 674742	clerk@clive-pc.gov.uk
<b>Clive School:</b>	Nicola Brayford	220385	admin@clive.shropshire.sch.uk
<b>Clive Village Show:</b>	Co-ordinator	220500	carrighouse@btinternet.com
<b>Clive + Grinshill History Group</b>	Bryan Bishop	01743 872477	bryan.bishop@talktalk.net
<b>Friendly Bridge Club:</b>	Chris Abbey	220755	chrisabbey@uwclub.net
<b>Friends of Clive School:</b>	FOCS	220385	via school tel. number
<b>Hand Bells:</b>	Dianne Holland	01948 840445	dianland55@gmail.com
<b>Renshaw's Field Association:</b>	John Darlow	07989 953771	johndarlow@hotmail.co.uk
<b>Parking in Renshaw's Field</b>	John Darlow	07989 953771	johndarlow@hotmail.co.uk
<b>NB weather dependant</b>	for Funerals, Weddings, Baptisms & all Church or Village Hall events.		
<b>Scottish Dancing:</b>	Graham Hacking	07579 029578	grahamh565@gmail.com
<b>Toddler Group:</b>	Kelly Boden	07814 142527	
<b>Village Hall Booking Officer:</b>	Paul Nicholson	220500	carrighouse@btinternet.com
<b>Mobile Library Clive:</b>	Friday on alternate weeks. Please see advert page 29		
<b>Wem Methodist Church:</b>	David Dutton	07976 383888	odard@hotmail.co.uk

#### Grinshill

<b>Grinshill Parish Clerk:</b>	Graham Bould	07792 300702	clerk@grinshillparishcouncil.gov.uk
<b>Village Hall Booking Officer:</b>	Vanessa Wycherley	220214	vantomwood@hotmail.com

To all Contributors please note the date for inclusion in the next newsletter will be the 15th July and we can only include items that include your name.

**WHAT'S ON IN CLIVE AND GRINSHILL IN JUNE AND JULY 2026**

**JUNE**

7 <sup>th</sup>	Clive	Music and Praise	11.00
7 <sup>th</sup>	Grinshill	Holy Communion	4.00
<b>9<sup>th</sup></b>	<b>Clive</b>	<b>W.I. Chutney and Cheer</b>	<b>7.30</b>
13 <sup>th</sup>	The Hub	Bingo	7.30
14 <sup>th</sup>	Grinshill	Holy Communion	9.30
<b>14<sup>th</sup></b>	<b>Clive V.H.</b>	<b>Strawberry Teas</b>	<b>2.00 – 4.30</b>
14 <sup>th</sup>	Clive	Evening Service	4.00
20 <sup>th</sup>	The Hub	Ladies Night	7.30
21 <sup>st</sup>	Grinshill	Morning Prayer	8.30
21 <sup>st</sup>	Clive	Holy Communion	11.00
26 <sup>th</sup>	The Hub	Pizza Night	6.30
28 <sup>th</sup>	Clive	Holy Communion	8.30
28 <sup>th</sup>	Grinshill	Family Service	9.30

**JULY**

5 <sup>th</sup>	Clive	Music and Praise	11.00
5 <sup>th</sup>	Grinshill	Baptism TBC	4.00
11 <sup>th</sup>	The HUB	Quiz Night	7.30
12 <sup>th</sup>	Grinshill	Holy Communion	9.30
12 <sup>th</sup>	Clive	Evening Service	4.00
<b>14<sup>th</sup></b>	<b>Clive W.I.</b>	<b>A True Life Story-Overcoming Adversity</b>	<b>7.30</b>
18 <sup>th</sup>	The Hub	Ladies Night	7.30
19 <sup>th</sup>	Grinshill	Morning Prayer	8.30
19 <sup>th</sup>	Clive	Holy Communion	11.00
<b>24<sup>th</sup></b>	<b>Clive V.H.</b>	<b>Summer Coffee Shop</b>	<b>8.45 – 11.45</b>
26 <sup>th</sup>	Clive	Holy Communion	8.30
26 <sup>th</sup>	Grinshill	Family Service	9.30

**Dates for your Diary**

<b>29<sup>th</sup></b>	<b>August</b>	<b>CLIVE VILLAGE SHOW -Schedule in next Newsletter</b>
<b>12<sup>th</sup></b>	<b>September</b>	<b>CLIVE V.H. HISTORY GROUP MEMORABILIA DAY</b>

## NEWS IN BRIEF

### **CLIVE VILLAGE HALL**

Has been fitted with sound absorbing panels to improve the acoustics and also an electric blind to the high window to stop sun glare. See details in Clive Village Hall report.

### **CLIVE VILLAGE GARDEN**

We have been fortunate in receiving a new bench for the garden provided by Anne and Richard Downes for which we are extremely grateful. As you will see from the picture on the front of the newsletter, Clive village garden is full of colour and being enclosed, it is sheltered with plenty of seating, so it is a perfect place for anyone to take a while to relax and enjoy the peace and quiet. ENJOY

### **RAF**

#### **Night Flying**

The next period is planned 26 May-2 July. Night flying periods are now for six weeks with two weeks in between periods. There will be posts on the RAF Shawbury social media channels advising on the night flying periods and we are grateful for the tolerance of this essential training. There is also information on the RAF Shawbury webpage with contact details for complaints or concerns. Night flying will commence typically 30 mins after sunset and may continue until 02:30.

#### **Course Community Projects**

We are always interested to hear about ideas for Community Projects. Usually, our trainees are available to help for a day and will provide a willing workforce but tools and equipment would need to be provided. Please be flexible with dates as time for course projects is timetabled and there is no guarantee we can provide a course to assist.

[SHY-LowFlying@mod.gov.uk](mailto:SHY-LowFlying@mod.gov.uk)



# **Clive Parish Council News Report – June 2026**

## **Planning proposals for Clive parish – Pending consideration**

At the time of writing, all three outline planning applications for development in Clive (Station Road, Flemley park, and Land adj. to The Bungalow) are still pending consideration. The PC submitted its objections to all 3 revised proposals after the March meeting and SC Cllr Alison Williams continues to push for these applications to be decided by committee (rather than a single planning officer).

## **Clive Annual Parish Meeting – Housing focus**

Thank you to everyone who attended the Annual Parish Meeting on 23<sup>rd</sup> April, it was fantastic to see such a good turnout. We had two very informative speakers: SC Cllr Dave Walker, Portfolio Holder for Planning who spoke on Neighbourhood Plans (NPs), what they can and cannot do, the challenges and benefits, and how his own parish of West Felton has been rapidly mobilised to start working on an NP when threatened by speculative planning applications (very similar to those we face in Clive).

We also heard from Craig Bethel from Community Resource Shropshire, who spoke about a Housing Needs Survey for Clive. The survey data will provide clear, up to date information on what kind of housing is actually needed in Clive, can be referenced in formal planning responses, and can also inform Neighbourhood Plan policies. The Housing Needs Survey will be fully funded with no cost to the parish, and more importantly Community Resource Shropshire is impartial and independent. They do not work for SC, housing associations, or developers. The goal of the survey is to empower communities, gain insight into community needs and opinions, and help inform decision-making. There will be plenty of advance promotion of the survey, so keep your eyes peeled for more info and make sure you share your thoughts when the survey drops.

## **Clive Neighbourhood Plan - Join the Steering Group now!**

We are now re-launching the Neighbourhood Plan Steering Group and need volunteers so we can get working on an NP for Clive straight away. We had 4 residents sign up at the April meeting (thank you!), but more people are needed to get the ball rolling. As an example, West Felton now has around 15 volunteers working on their NP, which makes it easier to split up the work into manageable tasks, and for them to dip in and out to fit in around their other commitments.

As a reminder, once a Plan is made, it becomes part of the development plan for Shropshire and **must** be referred to when SC is determining planning applications. If we can get an NP made for Clive it will give us a lot more say in the future of development in Clive. If there was ever a time for the Clive community to come together and combine their knowledge, skills, and energy for the future of Clive Parish, then this is it.

If you are interested in joining the Clive Neighbourhood Plan Steering Group, please don't hesitate to contact the Clerk on [clerk@clive-pc.gov.uk](mailto:clerk@clive-pc.gov.uk).

### **Stay informed, stay energised, and get involved**

- Come to Council meetings (third Thurs of every month except Aug and Dec), and the Annual Parish Meeting, and consider joining the Neighbourhood Plan Steering Group (see above).
- Subscribe to the Clive PC email alerts list to get an email when we post news on our website (max one email/day). Click the envelope logo on the right-hand side of PC website to sign up.
- Set up planning alerts via SC Planning Portal – Set up and/or login to your Planning Portal account, click Search, Planning, then Map Search, and find the relevant point on the map. Use the Search tool (magnifying glass symbol) to specify your search area (rectangle or radius up to 1km). Save the search to be notified of any applications within the chosen area.

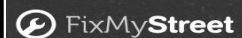
### **Dog fouling - poster competition and dog warden patrols**

A winning poster design has been chosen and we are getting these printed up for display around the community soon. In the meantime, the dog warden will be investigating Clive, so please be a considerate dog owner and clean up after your dog. It is your legal responsibility and you could be fined £1000 if you do not.

#### **What can concerned residents do?**

Quickly and easily report concerns via:

1. FixMyStreet mobile app
2. Shropshire Council's website: <http://www.shropshire.gov.uk/street-care-and-cleaning/environmental-maintenance/dog-fouling/>
3. Customer Service Centre by calling **0345 678 9006**.



**Call 0345  
678 9006**

**Next Council meetings: Provisionally Next Council meetings:  
Provisionally Thurs 18<sup>th</sup> June, 16<sup>th</sup> July, 17<sup>th</sup> Sept 2026**

Council meetings are usually held on the third Thursday of the month (no meetings in Aug/Dec), at 7.30pm, in Clive Village Hall. All are welcome to attend and there is an Open Forum at the start where local electors have an opportunity to speak on agenda items.

**SHREWSBURY  
FOOD  
FESTIVAL**

Food • Family • Fun!

**27 & 28 JUNE 2026**  
**THE QUARRY PARK  
SHREWSBURY**

180+ food, drink & homeware exhibitors, 2 chef demo stages, tastings, live music, family entertainment stage, field to fork area and lots of free kids activities.

Evening Concert  
6.00-8.30pm  
on Saturday

**SHREWSBURY  
FOOD  
FESTIVAL**

BROUGHT TO YOU BY  
**SHROPSHIRE  
Festivals**

**BUY TICKETS**

[shrewsburyfoodfestival.co.uk](http://shrewsburyfoodfestival.co.uk)

**SJF Design & Print**

- ✓ Flyers / Leaflets
- ✓ Newsletters
- ✓ Print Design
- ✓ Promotional Items
- ✓ Banners
- ✓ Signage
- ✓ Posters
- ✓ Brochures

hello@sjfdesignandprint.co.uk  
01939 210261 / 01939 291645  
07581 193576

Unit 7, Leaton Forest Offices,  
Leaton Knolls, Shrewsbury, SY4 3HX

**FAST  
DELIVERY**

[www.sjfdesignandprint.co.uk](http://www.sjfdesignandprint.co.uk)

CVH

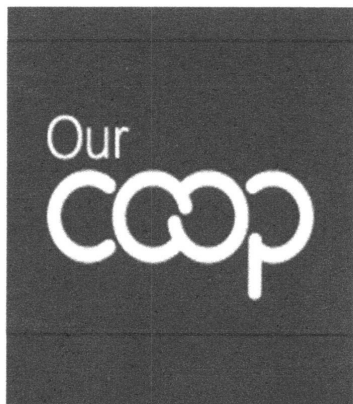
## Clive Village Hall

Registered Charity Number 1001707

We are always looking for ways to improve the facilities and increase accessibility at the village hall and so we are pleased to announce two new developments.

The echo in the main hall has at times made conversation difficult. Following professional advice from Sound Reduction Limited, we had them install 18 sound absorbing panels. These will greatly improve the acoustics helping both those listening and those giving presentations.

We have also had local company BW Blinds fit an electric blind to the high window in the hall. This will both help with insulation and provide the opportunity for a complete black-out for any audio-visual events.



We would very much like to thank everyone who supports our fund raising events, such as the Coffee Shop and CVH 100 Club. Monies raised have helped fund these improvements. A special thank you must also go to our friends at the Wem Coop who helped us obtain a £600 grant from the:-

**'Our Coop Doing Good Together Fund'.**

**CVH**

**Clive Village Hall**

Registered Charity Number 1001707



The Coffee Shop will be open for

**'Strawberry Teas'**

**Sunday 14<sup>th</sup> June, 2:00 - 4:30pm**

**Refreshments**

**Saturday 4<sup>th</sup> July at Clive School Fete**

and our **Summer Coffee Shop**

**Friday 24<sup>th</sup> July, 8:45 - 11:45am**



A date for your diary:

**Clive Village Show**

**Saturday, 29<sup>th</sup> August**

Watch out for the schedule, which will be published soon. There will be something for everyone!

Home grown Produce; Flowers; Arts & Craft;

Baking & Cookery; and Children's classes.

Full details and entry form will be in the August edition of the C&G Newsletter

## The Changing Seasons at Sansaw Estate 2026

The spring equinox has officially passed, and momentum is building across the estate. We are feeling a burst of energy not just with the animals and nature around us but also across our farm and property teams.

After a long wet winter, the lengthening days have brought ideal conditions for planting, calving, and construction.

The three areas where the estate has seen remarkable progress in recent weeks.

### 7,000 Metres of New Mixed-Species Hedging

One of the most significant undertakings this season has been the planting of 7,000 metres of mixed-species hedging across the estate. This is part of the estate's long-term commitment to enhancing biodiversity, improving habitat connectivity, and strengthening the natural resilience of our landscape.

The new hedgerows include a rich blend of native species—hawthorn, blackthorn, hazel, field maple, dog rose, and others—chosen to support wildlife throughout the year.



### A Fast and Successful Calving Season

Spring marks one of the busiest periods for the estate's livestock team, and this year's calving season has been exceptionally smooth. By the end of February, **80% of the herd had already calved**, an impressive pace that

reflects both excellent herd health, the expertise and dedication of the dairy team.

Early, compact calving brings several benefits:

- Stronger, more uniform calves
- Reduced labour pressure later in the season
- Better grazing management as the spring flush arrives



The attention to detail, and calm handling have ensured that both cows and calves are thriving as we move into the warmer months.

## Black Birches Cottage Nears Completion

Away from the fields, construction work at **Black Birches Cottage** is progressing rapidly.

Once complete, the cottage will become the estate's **first short-term rental property**, offering guests the chance to experience the tranquillity and charm of Sansaw firsthand.

The renovation has focused on preserving the character of the original building while introducing modern comforts and thoughtful design. When finished, Black Birches Cottage will provide:

- A peaceful rural retreat
- Access to beautiful walking routes
- A base for exploring the wider Shropshire countryside

The project marks an exciting step in diversification at Sansaw, opening the estate to visitors coming to Shropshire to enjoy its landscapes, heritage, and wildlife.

A growing sense of regeneration can be felt across Sansaw Estate. New hedgerows are taking root, healthy calves moving into the fields, and Black Birches Cottage nearing its debut. We look forward to bringing you the next update in a few months.

5	1							2
	4	9				1		
				4	6	7		
							7	
			5					4
		3		7	2		6	
7	5					8		
	3	1	7					
			3		9			

**Sudoku**



## Clive CE Primary School - June 2026



The term has continued as busy as ever and as always in the summer, set to get busier! The children have all been working hard and learning lots of new skills. We have seen

lots of visitors in school for a variety of reasons and most classes have been on visits for sports events or curriculum visits.

Next term our Y6 children will be sitting their Standard Assessment Tests (SATs) in the week beginning 11<sup>th</sup> May. They will be working in the Village Hall so if you see them on their way down, wish them luck!! Y4s will be undertaking Multiplication Tables Checks, Y2s will undertake their own SATs, Y1 will have a Phonics check and Reception are Assessed against the Early Years and Foundation Stage Profile which assesses the 17 areas of the EYFS curriculum. So, a busy time of assessment but there will be lots of fun times too. You may see Y6 cycling around the village as they undertake their Bikeability cycle safety training or maybe the younger children walking the village roads undertaking some pedestrian safety training. Watch out for them and do say 'hello!' If you happen to be out walking your dog please don't be surprised if the children stop and fold their arms across their chests. This is what they are taught to do around unfamiliar dogs to avoid being hurt. We were very pleased to be invited, by Clive Parish Council, to design a poster to encourage dog owners to pick up the mess left by their dogs. Bardy won the competition and her design has been produced on waterproof paper to be placed around the village.

Dormouse class have once again had a busy term. They have welcomed some new nursery children along with a new Reception child. The garden has been a big priority for their topic about growing and as the weather gets warmer, the garden will get fuller. The children have been busy growing in confidence with their reading and writing and Reception are beginning to use their phonics to write longer sentences. Reception children have also started their 10 weeks of swimming and are making fantastic progress. Later in the term they will be learning about people who help us and have a session in our village hall learning about different jobs with the chance of hands on experience.

The topic this term in Red Squirrel class is "Countryside to Coast." They will be identifying the similarities and differences between living in the countryside and living by the coast. They are very excited for their trip to Rhyl to explore the seaside and visit the RNLI centre. Year 1 and 2 will also be participating in the "mini

Olympics" event at Thomas Adams in June, which they always look forward to. During the summer term, Red Squirrels also enjoy their weekly swimming sessions at Wem.

This Summer term, Hedgehog class has been studying rivers with a focus on geography. They have been learning to identify and name the different stages of a river, using the River Severn as a local example. As part of their learning, they are preparing for an educational trip to the River Severn in June, where they will observe these features in a real-world setting. In science, the class has been exploring living things and their habitats, developing an understanding of how different organisms live and interact within their environments.

Hedgehogs have been enjoying cricket sessions on the field, where they have been developing their striking and fielding skills through a variety of engaging activities. In addition, they are preparing to take part in the Shropshire Sings concert in June, where they will perform a selection of songs they have been learning during their music lessons.

This term Badger Class (Year 5 and 6) are finding about "Mountains and Mosses" in their Geography work. So far, they have studied major world mountain ranges, before looking closer to home and comparing these landscapes to Whixall Moss later in the term. In English the class have been reading "Survivors" - true stories of beating the odds in extreme circumstances, which has inspired some incredible writing from the pupils. By the time you read this, Year 6 will have sat their SAT papers before having a busy June and July with a two night residential trip, canoeing and climbing with Arthog Outreach, transitions to new schools and finally their leavers' events.

Eco committee have been working hard on their action plan. The four action points which the children have decided to focus on are Water - saving water and making sure that we don't waste this precious resource; Litter - making sure that our local community is litter free and that we encourage others to not drop litter; Healthy living - promoting healthy food. They hope to encourage meat free meals and finally, Marine- finding out how we can support and protect marine life and their habitats when we visit the seaside.

Our Nursery accommodates children from the term after their third (3) birthday. If you know of anyone looking for a Nursery place, please point them in our direction ([admin@clive.shropshire.sch.uk](mailto:admin@clive.shropshire.sch.uk) or 01939 220385).

*All Saints Church,  
Clive*



### **Vicar's letter**

Dear All,

What a glorious spring we are having in terms of the green gardens if not the current politics. Aren't we fortunate to be based in such a beautiful place with the views across to the Welsh hills lovely fellowship in our villages. As I write, we have our charity concert this weekend with the Shrewsbury school talents and our outdoors service at Grinshill.

Ahead we have strawberry teas with perhaps a splash of Pimms, open gardens wider afield this year and perhaps in our villages next, all the lovely end of term school events and a

full programme of activities leading up to the popular Clive produce show.

Many thanks to all who work so hard behind the scenes to make so many of these events happen. The background planning and smooth running take a lot of effort and wide goodwill and are a credit to our community and the public-spiritedness of you all..

Such simpler community activities and joys are so important for what is called these days 'wellbeing'. They don't involve large amounts of travel or money and set a tone of quiet satisfaction to our lives. Let us thank our maker for all the quiet joys that Shropshire provides and cherish them as this summer season unfolds.

### **Stop press:**

What a wonderful turn out for the Clive concert on Saturday. The church was full and a wide range of singing and showcase instrument playing was enjoyed by all, topped off by a wonderful rendition from a Wem Thomas Adams pupil. Many thanks to all who supported this and special appreciation to Sandy for his tireless work setting it up. We were blessed too by unexpected sunshine for the popular Grinshill woodland service, led by local musician and poet priest Rev Rich Clarkson. A sumptuous array of refreshments in the village hall afterwards completed a lovely weekend.

**Best wishes, Vicar Paul**

Crane Quality Counselling

Presents

Bringing on back  
the 60's

Featuring

**THE SWINGING  
BLUE JEANS**



Supported by  
**Solid Gold DJ Paul Cowdrey**

Saturday 27th June 2020

The Croud Meadow SY2 6ST

7pm - 12:30am

For more information contact  
**01743 240546**

Tickets £23





## Grinshill Parish Council -

The Parish Council held its Annual Meetings at Grinshill Village Hall 6pm (new starting time) on the 11<sup>th</sup> May 2026, slightly later than usual due to the previous Bank Holiday Monday in May. This article highlights actions the Parish Council continue to follow through and their work with partners.

### 1. Parish Council update.

The Parish Council at last set of meetings covered a number of areas. This included at the Annual meeting discussions with representatives from Grinshill Village Hall the renewal of the halls lease with Sansaw Estate. A number of elements remain outstanding still to be negotiated and resolved with the Estate, the principle of a thirty year lease with ten year break clauses are part of the active discussions underway. Once a final draft agreement has been reached by all sides Parishioners will be updated on the outcomes. Cllr David Walker was re-elected as Chair of the Parish Council for 26/27 and updated the meeting on some of the progress made during 25/26 including the wetland project within Corbet Wood part funded through grants from Veolia and Tesco to be able to engage a tree surgeon to take out some trees to allow light onto the site with the planting of wetland plants by the Probation Service. The full statement will be available on the web site to view very shortly.

The Parish Council has also signed off on it's Annual Governance and Accountability Returns for 25/26. The Statutory Notice will be published and exhibited on both the web site and notice boards as an exempt authority so Parishioners can exercise their public rights to inspect the records between the 3<sup>rd</sup> June to the 14<sup>th</sup> July 2026.

The lack of a re-instated bus service for Grinshill remains an outstanding unresolved issue that the Parish Council has raised with the local Shropshire Councillor for Shawbury covering the parish Shropshire Councillor Alison Williams, they can be contacted about the local campaign for a bus at [alison.williams@shropshire.gov.uk](mailto:alison.williams@shropshire.gov.uk),

**There also remains three vacancies on the Parish Council, anyone interested in being co-opted should contact the Clerk on the details set out at the end of this article.**

## **2. Parish Council Clerk and Responsible Financial Officer.**

The post for a Parish Clerk has been advertised on the Shropshire Association of Local Councils (SALC) web site for interviews in the summer with an appointment date for January 2027 **Anyone interested in finding out more about the role can contact the present Clerk for more information or visit the SALC vacancies web page on the link below.**

**<https://www.alcshropshire.gov.uk/vacancies>**

## **3. Shropshire Council – Working with Town and Parish Councils - devolving services.**

The Parish Council has submitted the Annual Environmental Maintenance Grant (EMG) this month for local improvements, these will be reported through future editions of the newsletter. Once Shropshire Council develops the next stage in their devolution agenda the Parish Council will engage with Wem Town Council about how environmental services can be improved throughout the parish.

## **4. Public Rights of Way (ROW) Project.**

Cllr S Kelly on behalf of the Parish Council is active in reporting any problems or concerns with the ROW's in the parish through to Shropshire Council. If Parishioners whilst walking do come across any issues please report directly through to Shropshire Council using the advisory briefing note attached via the web link below - **<https://www.shropshire.gov.uk/media/23880/reporting-an-issue-on-a-prow.pdf>**,

## **5. Parish Policing Priorities.**

One of the three Parish Policing Priorities relates to Scams against Parishioners – highlighted below is an update on fraud from West Mercia Police Economic Crime Unit highlighting such scams and actions to prevent getting drawn in and scammed.

West Mercia regularly highlight Romance Fraud as it remains one of the more common forms of online fraud. It is moreover a very damaging type of fraud not only from a financial view but also from an emotional view and the damage caused to the victim's mental health and well-being.

It is also important to recognise that victims should be treated with empathy and understanding and not with blame, and shame. The criminals behind most Romance Frauds are skilled at manipulating and coercing their victims. They may use similar tactics to Domestic Abusers and are coercive and controlling.

The fraudsters will draw their victims into false relationship, gain their confidence, before the requests for money start to come in. These are accompanied by heart rending pleas about personal, or family problems, and emergencies which need finance.

### **Are any platforms safe?**

Fraudsters continue to target users of popular social media platforms such as Facebook and Instagram, as well as dating sites such as Tinder and Plenty of Fish, and many others.

Messaging sites such as Google Hangouts and WhatsApp may also be used to find unsuspecting victims.

As well as conventional dating platforms, online Gaming platforms may be used to seek potential victims since there are fewer protective measures in place.

### **Who are their targets?**

Females over 40 years are common victims as well as younger males, but users also need to be aware on age related dating platforms too.

### **How does it work?**

Basically, criminals will go to great lengths to gain the victim's trust by claiming they are in a genuine relationship which is built up over time.

They will manipulate and exploit the victim to the extent they are persuaded they are in a real and genuine relationship. They create convincing personas such as military personnel, medical staff, engineers and many others to convince the victim they are genuine. Then, when they ask for money, the victim is convinced there is no problem with the request. The requests can be very emotive citing reasons such as medical emergencies, travel costs, payment of fines or taxes, or even claiming their bank account has been frozen. Another Red flag is "Love Bombing" which is a common technique where the person shows excessive interest in you by way of extreme flattery, strong communicating of their feelings for you and promoting ideas of your future together at a very early stage – beware if they get too serious – too quick.

### **Tell-tale signs a friend or family member is involved in a Romance Scam**

They may be very secretive about their relationship or provide excuses for why their online partner has not video called or met them in person. They may be unwilling to discuss their online relationship, very often because the fraudster has persuaded you not to tell your family or friends. They

may express very strong emotions and commitment to someone they have only just met. They have sent, or are planning to send, money to someone they have not met face-to-face. They may take out loans or withdraw from their pension to send money.

### **Stay safe**

Never send money to someone you have never met in person. Never part with your bank or personal details to strangers online however genuine they claim to be. The fact that they may request payment to another named bank account, not their own, can be another tell-tale sign of a fraudster. Always seek advice from somebody trusted before parting with any money in any format, whether it is bank transfers, PayPal, Gift Cards or bitcoin currencies. Profile photos are very often fake; you can research any image by doing a “Reverse Image” search to find photos that have been copied from elsewhere. Never share images of yourself that you would not want your own family and friends to see.

***Please feel free to share these messages with any potentially vulnerable relatives, friends and neighbours.***

***If you have fallen for a fraud,***

Report it to **Report Fraud (formerly known as ACTION FRAUD) on 0300 123 2040** or via **reportfraud.police.uk**

***Scam Text messages can be forwarded to 7726 to help phone providers take prompt action and block numbers that generate spam on their networks. You can also report Scam mobile calls by texting 7726 with the word “Call” followed by the fraudulent caller’s phone number.***

***Forward Fake Emails received to report@phishing.gov.uk***

If you think your bank account or personal banking details have been used fraudulently, then use the short phone number - **159** - to contact the Fraud Prevention Department of most major UK banks.

### **Operation Snap**

As part of Operation Snap, members of the public can report and submit digital footage showing potential traffic offences via a secure online form.

**<https://secureform.nextbase.co.uk/>**

This can range from driving dangerously or carelessly to overtaking on solid white lines, using a mobile phone while driving, ignoring traffic lights or dangerous driving around other road users, such as horse riders and cyclists.

Please note; issues with number plates, windscreens and minor traffic offences are unable to be dealt with via Op Snap.

General parking complaints (other than illegal parking on zig zags) should be raised with the relevant local authority. Notification of untaxed vehicles can be reported directly to DVLA, reports of no MOT or no insurance should be logged to 101, not via the Op Snap portal.

Your submission will be sent to West Mercia Police where the evidence will be reviewed by one of our road traffic police officers.

One statement is required for each submission/offending vehicle. We are unable to process multiple offences sent as one submission.

West Mercia Police will strive to update each submitter regarding the outcome of their allegation. All submissions are dealt with pro-actively to help reduce risk taking and poor driving on our counties roads.

Any footage submitted through the portal can be used by us to help educate other road users and to advise on case results.

Please note - if you operate a recording device in a public place, you may have obligations under the General Data Protection Regulation (GDPR). It is in your interest to familiarise yourself, and comply with, any such obligations as apply to you. If you are in any doubt as to your obligations, please obtain independent legal advice to ensure you do not put yourself at risk of prosecution. By submitting footage you acknowledge you have read and understood this before proceeding.

For more information, please see the Frequently Asked Questions section or email [OpSnap@westmercia.police.uk](mailto:OpSnap@westmercia.police.uk)

### **9. RAF Shawbury Contacts and Website details are set out below:**

If Parishioners have concerns or complaints about low flying they can contact the RAF Shawbury using the information set out below.

Low Flying Complaints Email: [SHY-LowFlying@mod.gov.uk](mailto:SHY-LowFlying@mod.gov.uk)

Low Flying Complaints Telephone: 01939 251712

Engagement and Media general enquiries Email:

[SHY-EngagementMediaTeam@modgovuk.onmicrosoft.com](mailto:SHY-EngagementMediaTeam@modgovuk.onmicrosoft.com)

Website: [RAF Shawbury](http://RAFShawbury.com)

For further information, or to see how you can get involved in your local community, please contact the Parish Clerk, Graham Bould (please note the new email) [clerk@grinshillparishcouncil.gov.uk](mailto:clerk@grinshillparishcouncil.gov.uk), ring or text 07792 300702 or one of the Parish Councillors whose details are available on the website highlighted below.



Grinshill Parish Council  
[www.grinshillvillage.com](http://www.grinshillvillage.com)



Visit the Grinshill Parish Council Website for village info, meeting details, planning information and more!

[www.grinshillvillage.com](http://www.grinshillvillage.com)

You can also receive information, updates and more by signing up to our email alerts on the website.

## **Shropshire Councillor Report April/May 2026**

### **Councillor Alison Williams**

#### **Shawbury Ward**

Over the past year, my work as your Shropshire Councillor has focused on supporting residents and parish councils to ensure that local concerns are clearly heard within Shropshire Council at a time of significant challenge and change.

Following the change in administration, the Liberal Democrat-led council inherited a very difficult financial position, with high levels of debt, reduced reserves, and a backlog of unresolved issues across many services. A great deal of effort this year has therefore been focused on stabilising the council's finances, improving governance, and addressing long standing problems while continuing to deliver day-to-day services. This has not been easy, and progress is often slower than any of us would like, but important steps are being taken to put the council on a more sustainable footing.

I continue to support residents with casework and helping to assist in their concerns and issues to the best of my ability. Please do get in touch if you would like my assistance.

Best wishes,

Alison

**Councillor Alison Williams**

[alison.williams@shropshire.gov.uk](mailto:alison.williams@shropshire.gov.uk)

C&G WI has had a busy few weeks.

Several members joined a WI coach trip to see the excellent production of 'Barnum' at the Birmingham Hippodrome. Members also attended the Shropshire Federation of WIs' conference at Theatre Severn in early May where they were able to listen to four very different speakers.

The highlight of the afternoon was the Keynote Speaker **Dr Lucy Easthope**, a world leading authority on disaster recovery. She has been at the centre of most of the key disasters of the last three decades, advising governments on their response to events from 9/11, 7/7 bombings, 2004 Tsunami, Iraq and Ukraine wars. She predicted the Grenfell Fire and worked on the aftermath.

Lucy highlighted that we all need to take responsibility for our own Disaster Preparedness by keeping an Emergency Kit in our cars with First Aid Kit, Bleed kit, Blanket, big coat, snacks, torch and power pack for your phone. Likewise, at home we should be keeping a supply of candles, solar powered Hurricane lamps, power packs, generators, emergency food and fresh water.

At our May meeting we welcomed Peter Dunhill. He gave a very informative talk on the history of the Shrewsbury Flaxmill/Maltings. A visit to the Flaxmill/Maltings is planned for early August.

**Clive & Grinshill are looking forward to welcoming Mel Latham to our June meeting.**

**Melanie is a natural storyteller, sharing the fascinating journey of her life, the founding of Holly Cottage Preserves, and the memorable people and events she's encountered along the way. Her talk is lively, warm, and full of practical tips, followed by a demonstration that brings her craft to life. You'll also have the chance to sample a wonderful selection of her homemade chutneys — with favourites available to purchase.**

**The July meeting will host Michael McCarthy, the children's author. He is registered blind and has Learning difficulties but his magnificent achievements include running the London Marathon, the Great North run, competing in the Special Olympics any many others.**

# WI Events for 2026



June 9th

**Chutney and Cheer - Mel Latham**

With her delicious chutneys and anecdotes



July 14th

**A True Life Story, overcoming adversity**

- Michael and Brian McCarthy

**AUGUST NO MEETING**



## Clive Baby and Toddler Group

**FRIDAY'S** (in term time), 9.15-11.00am at Clive Village Hall

Small, welcoming  
informal group

Books &  
Puzzles

Free play

£3 per child  
50p for siblings

Tuff tray  
& crafts

Toys &  
ride-on's

Singing &  
rhymes

Snacks and  
refreshments

For more information contact Kelly Boden 07814 142527 or find us on Facebook – Clive Baby and Toddler Group





— BAR • SOCIAL —

CLIVE HUB

Built by the Community for the Community

Fully licensed venue available for hire

**Opening Times**

Monday	Closed
Tuesday	Closed
Wednesday	19:00 – 23:00

Thursday	19:00 – 23:00
Friday	18:00 – 23:00
Saturday	19:00 – 23:00
Sunday	13:00 – 16:00

To discuss hire charges contact Kate Evans via  'Clive Hub'

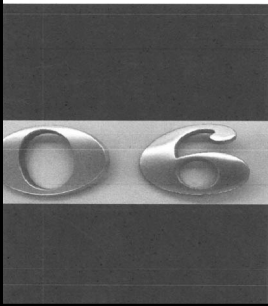
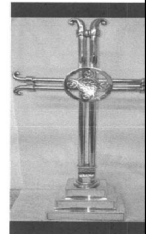
Tel: 01939 220058 Back Lane, Clive SY4 3LA

# TFS Birmingham

For more information or if you have any questions or if we can help please contact us on: Josh – 07518938881 or Andy – 07811295148

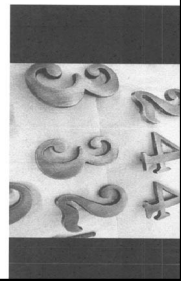
[Josh.tfs2016@hotmail.com](mailto:Josh.tfs2016@hotmail.com)

[www.tfsbirmingham.co.uk](http://www.tfsbirmingham.co.uk)



We also specialise in metal restoration, anything from door knobs to car bumpers. We can bring your items back to life.

We offer our finishes in a polish or sateen finish. The finishes we offer are: Nickel, Chrome, Copper, Brass and various shades of bronzing, we can also apply protective wax or lacquer to your items to prevent aging or rust



# Water&Co

Plumbing & Renewable Heating

## Plumbing & Renewable Heating Services

### You Can Count On

We offer a wide range of plumbing services, including installation, repair, and maintenance of all types of plumbing systems.

Our team is available 24/7 to handle any emergency plumbing situation

T: 07598 287227

☎ 07598 287227

E: [info@waterandco.uk](mailto:info@waterandco.uk)

f /WaterandCo

W: [www.waterandco.uk](http://www.waterandco.uk)

*Covering Wem and the surrounding areas*

**OPTIMUM**  
PROPERTY SOLUTIONS

**Call TODAY**

for a  
**FREE quote!**

☎ Jim: 07805 722454

✉ [info.optimumproperty@gmail.com](mailto:info.optimumproperty@gmail.com)

f [Optimum Property Solutions](#)

☎ +44 7805 722454

**No job too small!**

### Services:

- ♦ General building
- ♦ Interior/exterior design, repairs & restoration
- ♦ Joinery, electrics & plumbing
- ♦ Painting & decorating
- ♦ Kitchens & bathrooms
- ♦ Flooring, lighting & decking
- ♦ Full project management (domestic & commercial)

### Why us:

- ♦ Experienced and qualified trades
- ♦ Fully insured
- ♦ Quality, detail-driven work
- ♦ Clear, friendly communication
- ♦ **Local** to Harmer Hill
- ♦ Supporting local businesses

**Your trusted local property solution.**



## THE CLIVE & GRINSHILL HISTORY GROUP

### **MEMORABILIA DAY. Saturday 12<sup>th</sup> Sept.**

We are hoping to run two sessions: 10am-12am & 2pm – 4pm to display our extensive collection of Photographs, Maps, Written Memories, Databases, Parish and School Records. **FREE ENTRY!**

- **POWER POINT** displays can be viewed in both sessions.
- Parish **MAPS** [1843-2000] will be laid out on Stage.
- Display Boards containing a wide range of the many different **DATABASES** that we have created will be located around the Hall.

**The PHOTOGRAPH CHALLENGE:** Can you put names to those forgotten faces of past Village Activities / Clubs & Societies / School classes / Special Events / Long established families of the Village?

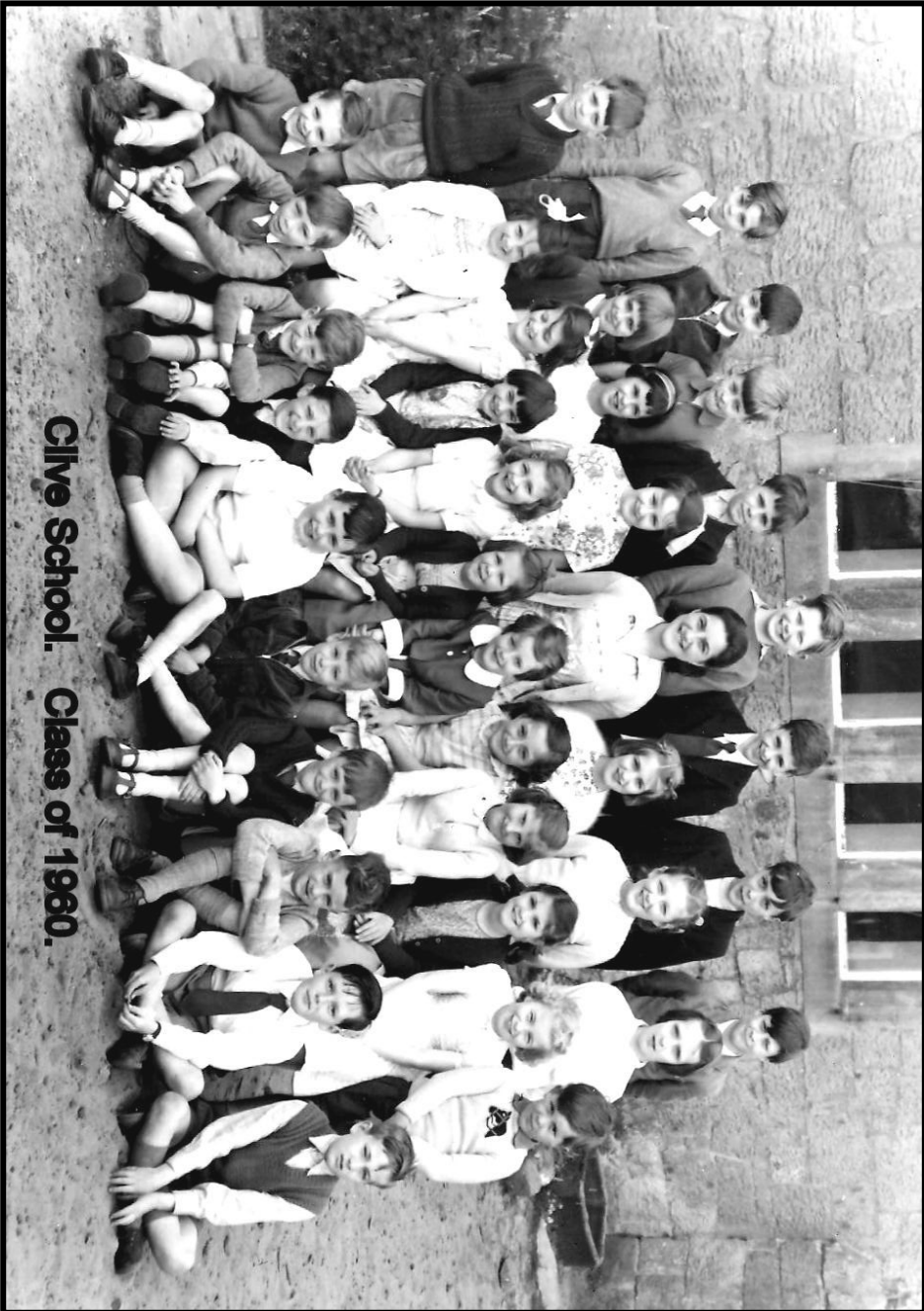
**SCANNING TEAM:** available throughout the day to make copies of any photographs or historical records that you are kind enough to bring to the Hall.

An excellent opportunity to sort out those old photographs or documents to ensure that they are preserved for future generations. Time to search those cupboards and the attic.

**Clive VILLAGE TOURS:** 12.00am & 4.00pm. Booking details will follow to allow you to reserve your place.

**CONTACT LISTS:** Unable to join us on the 12<sup>th</sup> September? We aim to create a list of future **CONTACTS** who wish to share any memorabilia or accounts and who would prefer an individual home visit to be able to record their own memories and those of their family.

CAN YOU NAME ANYONE (answers in next edition)



**Clive School. Class of 1960.**

# SHREWSBURY CHILDCARE



- Regular or one-off childcare available in your own home
- 25 years childcare experience with all ages
- Live-ins, sleep overs and house sitting
- Excellent references
- DBS
- Paediatric First Aid
- Insurance
- Rates from £13 per hour

Please feel free to contact Kate for more information on 07968624792 or [kingslandbandb@gmail.com](mailto:kingslandbandb@gmail.com)

Located in Sansaw Heath SY4 3JS

## S.Ellis Tree Services

*Tree cutting service and garden maintenance*

Sion Ellis  
*Tree Surgeon*

07493 182 855  
Sundorne  
Shrewsbury

[sellistreeservices@gmail.com](mailto:sellistreeservices@gmail.com)

<https://www.sellistreeservices.co.uk>



## HORSE LIVERY

**D.I.Y. or Part**

**Broughton Farm, Harmer Hill**

- Floodlit all weather schooling arena
- Large stables in court yard setting
- All year grazing in safe paddocks
- Excellent facilities and hacking

Tel: 01939 220250  
or 01939 220131

# DARREN TOWNSEND

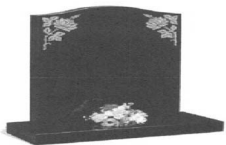
Painter & Decorator

**All aspects of interior or exterior  
decoration undertaken**

Hanwood,  
Nr Shrewsbury

01743 860241  
07795 262629

darrentownsend18@hotmail.com



## OWENS MEMORIALS

For Churchyard and Cemetery  
21 Queen Street

**MARKET DRAYTON**

TF9 1PS

**01630 654135**

Email: [office@owensmemorials.co.uk](mailto:office@owensmemorials.co.uk)  
Website: [www.owensmemorials.co.uk](http://www.owensmemorials.co.uk)

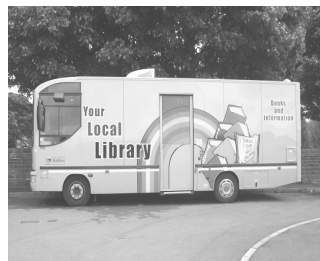
### Mobile Library (Clive)

Times on Alternative weeks, Friday  
17th April, 1st May, 15th May & 29th May

Holly Close, Clive 11.20 –11.35am

Railing after Flats Clive 11.40 –12-10pm

Field Drive, Clive 12.15—12.30pm



# Grinshill Village Hall

is available for hire

*Suitable for Small Parties, Rehearsals, classes,  
children's parties, meetings etc.*

Facilities include:

Main Hall, well equipped kitchen, disabled toilets, oil  
fired heating, comfortable chairs.

Contact Marie Barber on 01939 220678 for details



## **CAVELL OIL HEATING & PLUMBING SERVICES**

**07773 413 582 • 07790 037 395**

Tony Porton • 3 Cavell Drive • Shrewsbury • SY3 8GD

**🔥 SERVICING 🔥 REPAIRS 🔥 INSTALLATIONS  
🔥 CALLOUTS**

FUNERAL



DIRECTORS

# W·R·R Pugh & Son

— established 1890 —

133 Longden Coleham Shrewsbury SY3 7DN | 87 Whitchurch Road Shrewsbury SY1 4EE

01743 344646

info@pughsfuneraldirectors.com

Dedicated professional service throughout Shropshire offering help and guidance in every aspect of arranging a funeral service.

- No obligation written estimates available upon request
  - Private service chapel
  - Personalised funeral stationery and orders of service
    - Forget Me Not Florist
    - Private parking & disabled access
    - Environmentally friendly options
  - We can recommend professional stone masons for all your memorial needs.



## Piano & Violin Lessons

## Events String Quartet



- BMus(Hons) degree & Postgraduate Diploma from Royal Northern College of Music
- Enhanced DBS Certified
- Lessons for all ages and abilities
  - Grand Piano
  - In Clive Village

**Isobel & Oliver [07813 347657]**  
**[[www.strelitziamusic.co.uk](http://www.strelitziamusic.co.uk)]**



## Clive Village Hall

*A warm, welcoming and inclusive space*

### Home to many local groups, events & activities

Our newly refurbished village hall is available for hire.

Suitable for social events, meetings, classes, family parties etc. Facilities include: main hall; reception area, well equipped kitchen, disabled access and toilets plus our beautiful garden.

For more information contact Paul Nicholson 220500  
Follow our Facebook page - 'Clive Village Hall'



Your local market,  
through local eyes.  
Because we live  
where you're selling.

As experts of the SY4 & SY13 area,  
we offer a personal unmatched service  
to help you with all your **buying,**  
**selling** and **renting** needs.

To chat with our friendly Wem team today please call 01939 234 368,  
click [monks.co.uk](http://monks.co.uk), or visit 13a High Street, Wem, SY4 5AA



# HATCHERS

Solicitors LLP



## Putting our clients 1st

At Hatchers Solicitors we like to put our clients first. We work closely with both individuals and businesses within the local community and pride ourselves in offering the right advice and solutions to all our clients.

**For friendly and professional advice please call your local office or visit our legal surgery at Wem Town Hall, 9am – 12pm every Thursday.**

---

Corporate & Business Law | Employment | Commercial Property  
Dispute Resolution | Residential Property | Agricultural Law & Property  
Family | Personal Injury | Wills, Probate & Estate Planning | Criminal Defence

---

### Head office

Welsh Bridge  
1 Frankwell  
Shrewsbury  
Shropshire  
SY3 8JY

t: 01743 248545  
f: 01743 242979  
e: [mail@hatchers.co.uk](mailto:mail@hatchers.co.uk)

### Harlescott office

6/7 Harlescott Lane  
Harlescott  
Shrewsbury  
Shropshire  
SY1 3AH

t: 01743 467641  
f: 01743 462384  
e: [mail@hatchers.co.uk](mailto:mail@hatchers.co.uk)

### Whitchurch office

45 Green End  
Whitchurch  
Shropshire  
SY13 1AD

t: 01948 663361  
f: 01948 666280  
e: [mail@hatchers.co.uk](mailto:mail@hatchers.co.uk)

[www.hatchers.co.uk](http://www.hatchers.co.uk)



Computerworks

# HOME & SMALL BUSINESS COMPUTER SUPPORT



Call Now  
**07852550216**

## Welcome to Computerworks

### No job too big or too small

Computerworks provides many different computing services from slow computers to fully custom gaming & office computers. Please take a look below at some of the many services we offer:

- ✓ Laptop & desktop repairs including both physical hardware issues as well as software issues.
- ✓ Slow Computers may that be a virus, malware or needing to upgrade physical parts.
- ✓ New & refurbished IT equipment including laptops and desktop computers.
- ✓ Backup solutions including both local backups and cloud based backups.



## Why Computerworks?

At Computerworks we provide honest, reliable and experienced computer support for home users & small businesses



### Services

We work with many of the leading brands within the computer industry which allows us to have a highly successful repair rate across our jobs.



### Feedback

We strive to give excellent customer service across all our jobs no matter how big or small the job is. Testimonials can be seen on our website.



### Collect & Return

If we cannot fix the device remotely or on-site we offer a collect & return service where the device is collected, repair is quoted for and then delivered upon completion.

## Get in Touch

📍 Wem, Shropshire, UK

🌐 [computer-works.co.uk](http://computer-works.co.uk)

✉ [info@computer-works.co.uk](mailto:info@computer-works.co.uk)



## Leaton Forest Firewood

Locally Grown, Traditionally  
Seasoned Firewood

Barrow Bags

Premium grade, £50  
B grade, £45

Bulk Bags

Premium grade, £150.00  
B grade, £125.00

Kindling £8.00

Free Local Delivery

To order;

Email; [trees@leatonforest.co.uk](mailto:trees@leatonforest.co.uk)

or

order through our website;  
[www.leatonforest.co.uk/  
firewood-log-sales/](http://www.leatonforest.co.uk/firewood-log-sales/)





## Bespoke Carpentry & Joinery



Transform Your Home  
with Beautifully Crafted Woodwork.

- ✓ Custom Carpentry
- ✓ Bespoke Designs
- ✓ Joinery & Woodwork
- ✓ Restoration & Repairs

Call Now  
For A  
Free Quote!

 **07922 265741**  
 [kenyonscarpentry.co.uk](http://kenyonscarpentry.co.uk)

*Quality craftsmanship – No job is too big or too small.*

## AMBLEWOOD COTTAGE & WOODPECKERS

GRINSHILL, SHROPSHIRE SY4 3BW

SELF-CATERING COTTAGES SET IN BEAUTIFUL COUNTRYSIDE

NESTLED UNDER GRINSHILL HILL.

PET FRIENDLY

BOTH 2 BEDROOMS - SLEEPS 4.

IDEAL FOR FAMILY AND FRIENDS,

FOR SHORT BREAKS, WEEKLY AND LONGER LETS.

CALL: VANESSA & TOM ON 01939 220214

EMAIL: [vantomwood@hotmail.com](mailto:vantomwood@hotmail.com)

WEB: [AMBLEWOODCOTTAGES](http://AMBLEWOODCOTTAGES)

OR BOOK ON AIRBNB.



## **WISHING WELL HOME CARE LIMITED**

### **PROVIDING BESPOKE HOME CARE SERVICE**

We are a local Employee-Owned Company with a lovely team of carers.

We offer a comprehensive care package tailored to suit your needs, from personal care, companionship, cleaning, shopping, and taking you for appointments.

Clients are treated like members of our own families.

In addition, we actively encourage social interaction within the community by organising regular get togethers which includes a seated exercise class followed by tea and cake!!

If you have a few hours to spare and have a kind, caring nature, why not give us a call about possible job opportunities, it is such rewarding work.

Phone : 01939 233114

Email : [cbright@wishingwellhomecare.co.uk](mailto:cbright@wishingwellhomecare.co.uk)

Or call in and see us at:

Unit 1a Maypole Court, High Street, Wem, SY4 5AA

CQC Rating 'Good'

EST  1936

# Frank Painter & Sons

F U N E R A L D I R E C T O R S

Spring Gardens, Shrewsbury, SY1 2TF  
01743 362024 (24-Hours)

- Family-run and well respected
- Pre-paid funeral plans
- Home visits
- Private Chapel of Rest
- On-site Service Chapel
- Unattended cremation services
- Local Knowledge
- Male or Female Funeral Directors



4th Generation family-run Funeral Directors, covering all areas of Shropshire and beyond, for over 85 years.

[www.frankpainterandsons.co.uk](http://www.frankpainterandsons.co.uk)



RENEWABLE ENERGY EXPERTS

- ✓ Air & Ground Source Heat Pumps
- ✓ Solar PV
- ✓ Battery Storage
- ✓ EV Charging

Local Shropshire Company  
Contact today for honest advise



**APPROVED  
CONTRACTOR**



MOS



[www.genren.co.uk](http://www.genren.co.uk)  
01743 664554



Look for us on  
Facebook

# House Gecko Architectural



*Residential architectural design across Shropshire,  
where inspiring design meets practical living .*

Extensions • Loft Conversions • Remodels  
Bespoke Homes • Heritage Projects

**Clear guidance from concept through planning and construction**  
Planning • Building Regulations • Project Guidance

*Free initial 30 minute consultation*

Email: [leanne@housegecko.co.uk](mailto:leanne@housegecko.co.uk)  
Tel: 07977 193837



## *Jane Rushworth Catering*

Available to cater for smaller  
occasions, Funerals, Christenings &  
Family gatherings



*Janerushworth@aol.com*  
07512423001

## **Earlsdale Garden Services**

- Lopping •Topping •Pruning •Trimming
- Fencing •Slabbing •Gravel •Patio's
- Turfing •Decking •Shed's •Pergola's



**24 Hour Emergency Service**

**All Rubbish Removed**



**Fully Insured**

**FOR A FREE QUOTATION RING JOHN PRICE**

**Tel: 01743 792924    Mob: 07702373856**

 **School Road**  
**Ruyton XI Towns**  
**Shrewsbury**  
**SY4 1JT**  
 **01939 261216**



 **High Ridge**  
**Wem Road**  
**Shawbury**  
**SY4 4NW**  
 **01939 251180**



ESTABLISHED SINCE 1991

INDEPENDENT PRACTICE

# Green Hollow Veterinary Group

We provide our own 24 hour emergency service!

Caring for creatures great and small, from pets  
to farm animals.

# Foot Health Practitioner

TEL 07809 575956

MANUELAS.FOOTCARE@MAIL.UK



HOME VISITS  
NAIL TRIMMING  
CALLUS AND CORNS  
FUNGAL NAILS  
VERRUCAS  
THICK NAILS  
AND MORE

MANUELA SAUNDERS  
S.A.C.DIP RFHP  
REGISTERED  
INSURED  
MOBILE CLINIC

## Need an Electrician or Handyman?

- New Consumer units
- Extra sockets/lights
- Electric showers
- Heating
- Fault finding & repairs
- Security

**Other handyman services available**  
e.g. painting & decorating

For a reliable and professional service  
No job too small

**Contact David Barber**

**Tel: 01939 220429**

**Mobile: 07722 943758**

[dhbarber@btinternet.com](mailto:dhbarber@btinternet.com)

# Beestons Property Services

All aspects of building work undertaken including extensions, new builds, bathrooms, wet rooms, aids and adaptations, renovations, kitchen fitting, plumbing, electrical work and groundwork

**With over 25 years experience**  
**call Phil Lansdale on 01939 220356 or 07863 180079**  
Haystacks, Meadowfield Court, High Street, Clive, Shrewsbury SY4 3JL  
**For a free No Obligation Quotation**

## PREMIER GARDEN SERVICES

*For all your garden needs.*

Grass Cutting      Hedge Cutting      Pruning  
Tree work          Planting          Weeding



**Contact Andrew**  
**Daytime**  
**Mob: 07817 106 305**

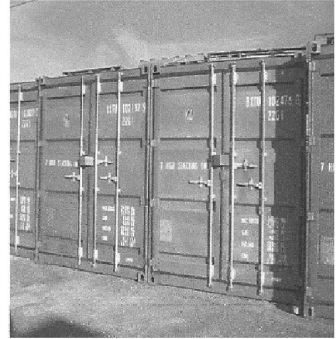


## **WEM STORAGE on WEM BUSINESS PARK**

**SECURE LOCKED 'CONTAINER STORAGE'**

**YOU HAVE YOUR OWN KEY  
MONTHLY, QUARTERLY OR  
ANNUAL TERMS**

**FOR TEMPORARY STORAGE OF  
FURNITURE, HOUSE CONTENTS,  
OFFICE EQUIPMENT, BUSINESS  
STOCK ETC, ETC**



**'CARAVAN STORAGE' ALSO AVAILABLE**

**NEW STREET, WEM, SY4 5JX**

**CALL BARRY 01939 233248 or 07860 383939**

### 3 Self Catering Cottages

Newton Meadows

Harmer Hill, SY4 3EA

Short breaks, weekly, long term

Chestnut Cottage sleeps 4

Maple and Oak Cottages sleep 7

Level access for the less able

Some ground floor bedrooms

Large garden, beautiful views

Large car park

[www.newtonmeadows.co.uk](http://www.newtonmeadows.co.uk)

[newtonmeadows@hotmail.com](mailto:newtonmeadows@hotmail.com)

07851 298 054

No pets and no smoking

## **WEM FARMERS MARKET**

**LEEK STREET CAR PARK**

**March—December**

**2nd Saturday each month**

Organic Vegetables

Selection of Meat Products

Plants & Seeds

Ice Cream, Cakes & Pastries

Free Range Eggs

Honey & Preserves

**FRESH LOCAL PRODUCE AT**

**VALUE FOR MONEY PRICES**

**Details: Call Rhona**

**on 01743 367407**



### Hand made sticks

I have made a variety of sticks to suit all ages and abilities, priced from £10 to £25.

All the profits are given to the Hospice.

Call in at Chimney Cottage (opposite the Phone box) or phone

Maurice on 220383. There is no obligation to buy, you can road test it first if you wish!

## TAILORED HOME INSURANCE RIGHT DOWN TO THE FINEST DETAIL

For high-value properties and contents, including valuables, fine art and collections, choose NFU Mutual Bespoke Home Insurance.

To discuss your high-value home insurance, contact:

Katie Sherry, High Net Worth Specialist at  
NFU Mutual Shropshire Marches

**Call** 01584 872416

**Email** [Shropshire\\_Marches\\_Agency@nfumutual.co.uk](mailto:Shropshire_Marches_Agency@nfumutual.co.uk)

**Search** NFU Mutual Bespoke



**NFU Mutual**  
BESPOKE INSURANCE

S L Latter, N T Morgan, J M Matthews & M D Shepherd is an appointed representative of The National Farmers Union Mutual Insurance Society Limited (No. 111982).

## Property Maintenance

Steve Thomas General Builder & Handy Man Services

Based in Sansaw near Clive, and covering North Shropshire

Fully Insured with over 15 years experience in the construction trade

Call or email for a free quote

Tel 07920 161 215, Email [stevithomas21@hotmail.co.uk](mailto:stevithomas21@hotmail.co.uk)

GARDEN MAINTENANCE

BUILDING MAINTENANCE

PAINTING AND DECORATING

PLASTERING

BRICK LAYING

PATIO AND DECKING

HOUSE CLEARANCE

OFFICE CLEARANCE

FENCING

JOINERY

DRAIN AND GUTTERING

CLEANING

TILING AND FLOORING



Call for a FREE quote on  
07754 872506  
01948 818675

- Tree Surgery
- Pressure Washing
- Landscaping
- Fencing
- Gutter Cleaning
- Grass Mowing
- Shed Clearance
- Stump Grinding

**Woodchip & Logs Available**



CRANE  
Quality Counselling

Charity No. 1175610

We offer a range of Professional Counselling Services  
for You, your Family, and Friends

Do you need support?  
We are just a phone call away.

Please call us on

**Tel : 01743 240546**

(24 hour answerphone service is available)

Alternatively,

E-mail - [admin@cranecounselling.co.uk](mailto:admin@cranecounselling.co.uk)

or visit - [www.cranecounselling.co.uk](http://www.cranecounselling.co.uk)

---

**Crane Quality Counselling** offers a wide range of counselling  
services to **families, individuals, and young people** across  
**Cheshire and Shropshire.**

**We provide counselling to cover a range of services including:**

- Family relationships & difficulties
- Couples counselling
- Loss & Bereavement
- Mental health difficulties, including anxiety & depression
- Children & Teenagers suffering with anxiety & depression
- Company HR support for local businesses

We work hard to maintain an appointment offer for your  
initial assessment in **7/14 days** of contact.

For details of our fees please contact us on

**01743 240546**

**Help is just a telephone call or e-mail away.**

## **RIDGE FUELS COAL, LOGS AND GAS BOTTLES**

QUALITY PRODUCTS AT COMPETITIVE PRICES  
LOCAL AND NATIONWIDE DELIVERY  
EXCELLENT RANGE OF FUEL FOR ALL APPLIANCES  
SELECTION OF MIXED WOOD INC KILN DRIED AND KINDLING  
STICKS  
SELECTION OF GAS BOTTLES  
CASH AND CARRY SHOP IN SHREWSBURY  
FREE ADVICE FROM OUR HELPFUL KNOWLEDGEABLE STAFF  
**Wholesaler and retailer**



**Please ring us for more information on 01743 241122 or  
visit our website [www.ridgefuels.co.uk](http://www.ridgefuels.co.uk)**

**RIDGE FUELS LTD  
LMS NEW YARD  
CASTLE FOREGATE  
SHREWSBURY  
SY1 2EN**

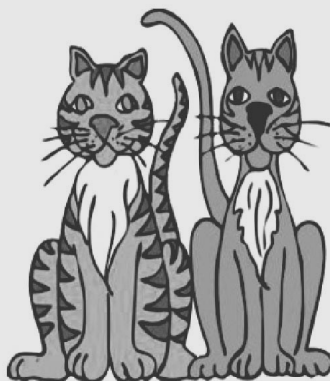


**what3words - ARTS.RUINS.BURST**



**Instagram**

### **NORTHWOOD GRANGE CATTERY**



**FAULS GREEN**

**SY13 2BB**

**01630 638324**

**[www.northwoodgrange.co.uk](http://www.northwoodgrange.co.uk)**

**Purpose built to Feline Advisory Bureau standards**

**Large pens with outside runs**

**Vaccinated cats only**

**Inspection welcome**

Northwood Grange, Fauls Green, Whitchurch SY13 2BB  
We are a 30 pen rural cattery situated between Hodnet and Market Drayton.  
We also board cats/kittens for rehoming for RSPCA- Shropshire Branch



Can you help 

 **Grinshill Animal Rescue** 

**...your local rehoming  
centre for dogs & cats?**

Situated in the village of Grinshill in North Shropshire.

Grinshill Animal Rescue, Undercliffe,  
Grinshill, Nr Shrewsbury, Shrops. SY4 3LQ  
Email: [jennyandkateatgar@tiscali.co.uk](mailto:jennyandkateatgar@tiscali.co.uk)  
Web: [www.grinshillanimalrescue.co.uk](http://www.grinshillanimalrescue.co.uk)

Call: **07740  
103 393**

Look for us  
on Facebook  
and Twitter



## J. Page LTD

**ELECTRICAL CONTRACTOR**

*Domestic & Commercial  
Installations*



*Intruder & Fire  
Alarms*

**NATIONAL INSPECTION COUNCIL  
for ELECTRICAL INSTALLATION  
CONTRACTING**

**NIC EIC APPROVED CONTRACTOR**

**Tel: Clive 220520**

**Mobile: 07973 106188**

## PAUL

**HUMPHREYS**

**PAINTER AND  
DECORATOR**

**ALL ASPECTS  
OF INTERIOR  
AND EXTERIOR  
DECORATING  
UNDERTAKEN**



*City and Guilds Qualified*

*Over 20 years experience*

For further details call  
**SHAWBURY**

**01939 250325**

# D S BOULTER

**Building and Property Maintenance  
City & Guilds Trained**

**Below is some but not all the work we cover:**

Brickwork, Stonewalling

Concreting

Plastering

Painting

Mobility Access, Ramps

Railings

Roofing, Chimney's

Guttering

Fencing, Paving

Landscaping

Conservatories

Extensions, Small Builds

**Free Estimates**

**Most building work undertaken, fully insured**

**For a prompt estimate call Darren**

**07535 369391 or 01939 231829**

**darrenboulter@hotmail.co.uk**

**2 Upper Trench Cottages, Shrewsbury Road, Tilley, Wem. SY4 5PD**

# D JENKINS

**PAINTER AND DECORATOR  
EXTERIOR AND INTERIOR  
FULLY INSURED**

**PDA Approved**

**Please call Dave on**

**01939 210447 or 07740 424287**

**12 Station Road, Hadnall**



THE SECRET SALON



@ SANSAW ESTATE

# THE SECRET SALON

@ SANSAW ESTATE

Tel: 01939 211140



*Hairdressing*  
*Beauty Treatments*  
*Kids Pamper Parties*  
*Pamper Packages*  
*Wedding & Special*  
*Occasion Hair & Make up*



UNIT 3, SANSAW BUSINESS PARK,  
SHREWSBURY, SY4 4AS

# HG

*The* HIDDEN GEM

## **Designer Mother of the Bride / Groom and Special Occasion Wear**

Stockists for Invitations by Veni & Veni Infantino

Beautiful Designer Hats to Match

*(Buy Back Options also available)*

We also stock John Charles Collection

We have a selection of pre-loved outfits for hire or sale

### **Prom & Ball Gowns**

*Packages available to include Hair and Make Up  
by very talented Professional*



[www.thehiddengemshropshire.co.uk](http://www.thehiddengemshropshire.co.uk) • 07971 182163

## Beneath the Spire

Beneath the spire where soft bells chime,  
the village awakes in gentle time.  
Stone walls warmed by golden hue,  
hold stories old, the day anew.

The school upon the hillside stands,  
with laughter carried on the land;  
as morning sun shines soft and still,  
on children filing up the hill,  
with bags and chatter on their way,  
their laughter drifts throughout the day.

The village hall with open door  
welcomes friends, and so much more;  
at monthly coffees, laughter grows,  
where WI meet, and toddlers go.

And in the Hub, as daylight ends,  
the room is filled with talk of friends.  
Up Grinshill's rise, the pathway bends,  
through quiet woods where birdsong  
sends  
a whispered call across the air—  
of lives once lived, still lingering there.

From sandstone quarries, long ago,  
where quarrymen would shape the stone;  
with steady hands and patient skill,  
their mark endures in stonework still.

From summit high, the land unfolds,  
in patchwork fields and distant folds;  
and standing still, I feel it true—  
this place holds more than just a view.



Poem & Image by Mandy Clarke