

The Friday Post

Friday, 08 May 2026



www.clivecofeprimaryschool.co.uk
admin@clive.shropshire.sch.uk



WHAT'S NEW THIS WEEK?

- Meet the Governors - Mrs Martin
- Sickness & Diarrhoea
- Holiday Club
- Diary dates

	PE	PE	Woodland School
Dormouse	Monday (swimming)	Friday	Thursday
Red Squirrel		Tuesday (swimming)	Friday
Hedgehog	Thursday	Friday	Wednesday
Badger	Monday	Thursday	Wednesday Y5 only

MENU

w/c 11th May 2026: Week ONE

Please note the change in menu. Menus are available at [Clive CofE Primary School: School Meals](#).

WRAP AROUND CARE

It is **essential** that children are booked in through the online form. Click on the links below:

SUMMER (1) TERM 2026:

[BREAKFAST](#) [AFTER SCHOOL CLUB](#)

REPORTING CONCERNS ABOUT A CHILD

To report a concern call Shropshire Council's First Point of Contact (FPOC) - 0345 678 9021

ABSENCE

If your child is absent from school, for any reason, please do not forget to let us know. This can be done by phone, email or the school spider app. Unreported absences will, for safeguarding reasons, be followed up by emails, texts and phone calls. Thanks

DIARY DATES

Mon 11th - Thurs 14th May - Y6 SATs
 Fri 22nd May - PD Day - **School Closed**
 Mon 25th - Fri 29th May - Half Term
 Thur 11th June - Individual and class photos
Fri 26th June - Sports morning
 Sat 4th July - FOCS Summer Fair
 Mon 6th &/or Tues 7th - Y6 transition days
Thursday 23rd July - End of Term

HOLIDAY CLUB

Holiday Club will run again during the May Half Term holiday and on the PD day – Friday 22nd May, Tuesday 26th May, Wednesday 27th May and Thursday 28th May. Contact the office to book.

SICKNESS AND DIARRHOEA

NHS guidance states that children should not return to school until **48 hours** after the last episode. This is to avoid the possibility of tummy bugs being spread.

MEET THE GOVERNORS:

Mrs Martin

Mrs Martin was appointed by Fields Trust to Clive's Local Governing Board. A teacher herself, she is passionate about ensuring that children at Clive are given a good standard of education whilst, at the same time, enjoying their time in school, making friends and developing positive relationships. She has two children, one in Nursery and one in Y2. As with all governors, she can be contacted through the school office (mark any correspondence for her attention).

VEG POWER

For ideas on getting your child(ren) to eat more fruit and veg have a look at [Veg Power](#). Lots of useful ideas and articles about the importance of fruit and veg. A particularly useful article about avoiding food waste. We are encouraging as little food waste as possible in school and the children are trying different foods to what they may be used to.



STAR PUPILS

Congratulations to Tallon who was voted (by the team) "Players' Player" award for Wem Warriors U8 football team. Well done Tallon!!



Well done to Lily and Henry who competed at a KS1 Cross country event yesterday. Lily came 3rd in her race and Henry came 5th in his. Brilliant achievements for both. Well done!!

HAPPY BIRTHDAY!!

Today is Sir David Attenborough's 100th birthday. The children have been thinking and talking about him and his impact on our understanding and love for the natural world. We hope he heard them singing happy birthday!!



Our value for the term is 'Respect'.



FOCS MEETING

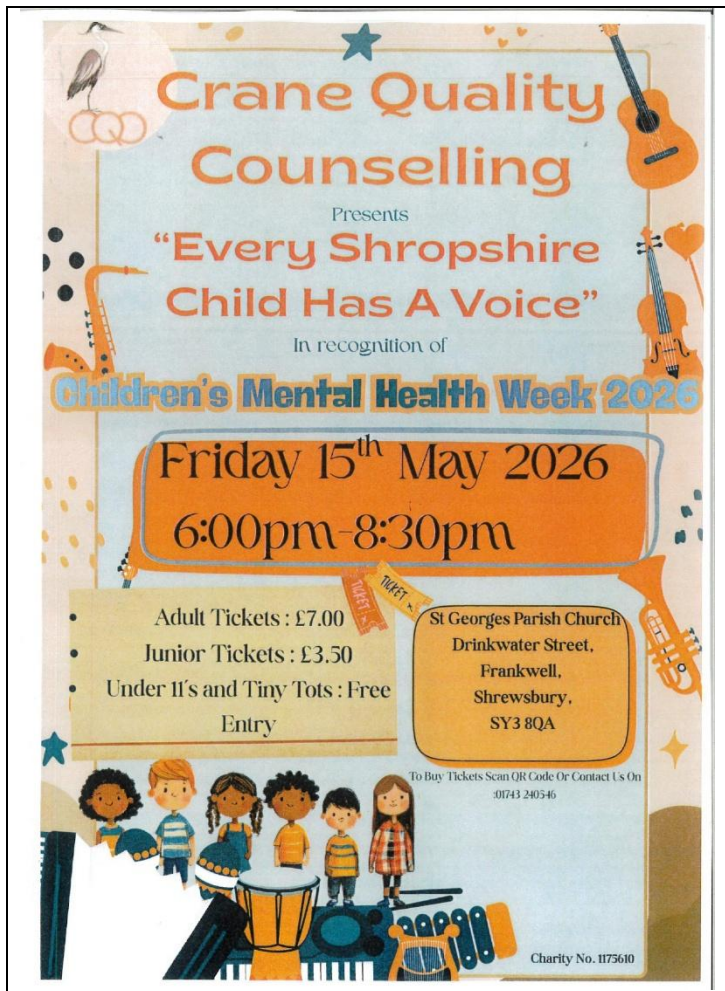
TUESDAY 12TH MAY 2026
7PM AT THE CASTLE, WEM

Do you have an event or fundraising idea but can't make the meeting? Speak to a Core Committee Member at the school gate or send us an email focs@clive.shropshire.sch.uk

CAN'T MAKE THE MEETING IN PERSON, JOIN US ON TEAMS BY CLICKING HERE

ALL WELCOME

FRIENDS OF CLIVE SCHOOL REGISTERED CHARITY NO - 1102576



Crane Quality Counselling

Presents
"Every Shropshire Child Has A Voice"

In recognition of
Children's Mental Health Week 2026

Friday 15th May 2026
6:00pm - 8:30pm

- Adult Tickets : £7.00
- Junior Tickets : £3.50
- Under 11's and Tiny Tots : Free Entry

St Georges Parish Church
Drinkwater Street,
Frankwell,
Shrewsbury,
SY3 8QA

To Buy Tickets Scan QR Code Or Contact Us On
01743 240546

Charity No. 1175610

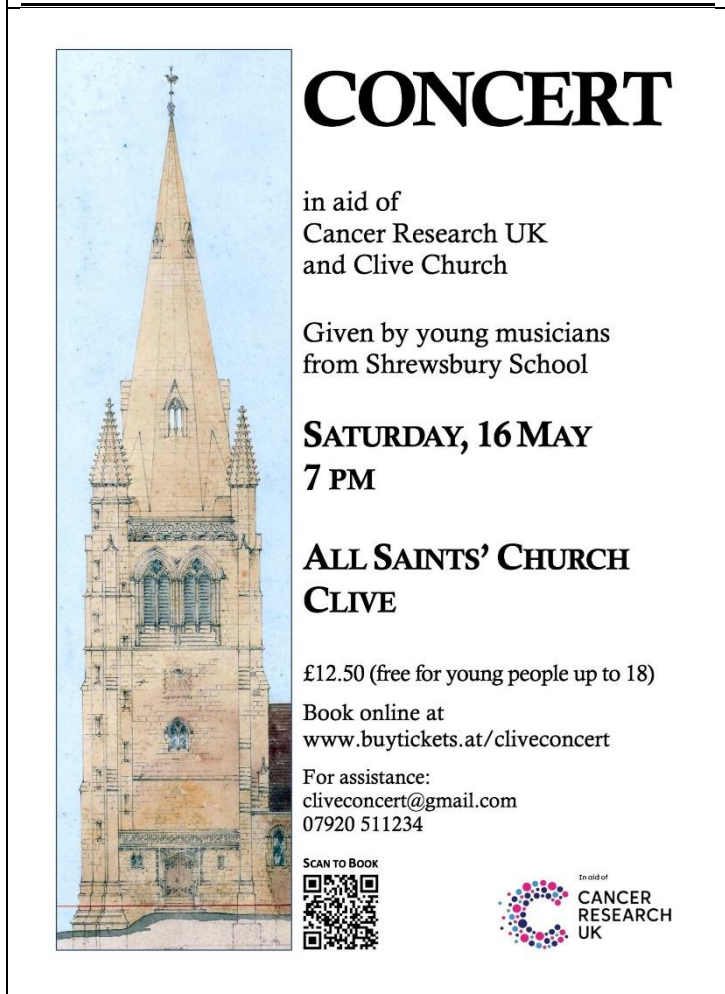


SEED & PLANT SWAP

BRING, SHARE, TAKE HOME SOMETHING TO GROW!

FRIDAY 15TH MAY
AFTER SCHOOL OUTSIDE GATE

FROZEN FRIDAY
ICELOLLIES & ICECREAMS £1 EACH
CASH, BACS OR CARD



CONCERT

in aid of
Cancer Research UK
and Clive Church

Given by young musicians
from Shrewsbury School

SATURDAY, 16 MAY
7 PM


ALL SAINTS' CHURCH
CLIVE

£12.50 (free for young people up to 18)

Book online at
www.buytickets.at/cliveconcert

For assistance:
cliveconcert@gmail.com
07920 511234

SCAN TO BOOK



In aid of
CANCER RESEARCH UK

Fenn's Whixall and Bettisfield Mosses National Nature Reserve



Family Wildlife Fun
Saturday 16th May 10am



Join us for a walk to spot birds, butterflies, dragonflies and raft spiders. We'll go bug hunting and pond dipping to see what special creatures we can find.

£6 per family of up to two adults and three children. Places are strictly limited.

To book your place or for more information, search Natural England on Eventbrite, scan the QR code, or email: info.whixall@naturalengland.org.uk



This event is not suitable for dogs.

www.gov.uk/natural-england

Cygnets teaches traditional drawing, painting, and sculpture, combined with unique projects, experienced teachers & professional quality materials.

We run two holiday workshops per day, so students can attend individual classes, or bring a packed lunch and stay for both!



Tuesday 26th May

10.30 - 12PM Red 'The Elephants' with Fineliner & Watercolour

12.30 - 2PM Orange 'Still Life With Oranges' with Oil Pastels

Wednesday 27th May

10.30 - 12PM Yellow 'The Kiss' with Inks

12.30 - 2PM Green 'Tiger in a Tropical Storm' with Colouring Pencils and Soft Pastels



Thursday 28th May

10.30 - 12PM Blue 'Le Rêve de Chagall sur Vitebsk' with Gouache

12.30 - 2PM Purple 'Saint Tropez in the Pine Woods' with Acrylic

Lots of different projects to choose from!

northshropshire@cygnetsartschool.com



cygnetsartschool.com/northshropshire

TERM TIME CLASSES

HOLIDAY WORKSHOPS



15% OFF
use code:
WULVJ4T



May Half
Term Holiday
Workshops
FOR AGES 5-12

Colours of the Rainbow

The Wynnstay Hotel,
43 Church Street, Oswestry SY11 2SZ

£25/Class / £45/Day / £135/Week

07796352162 | NORTHSHROPSHIRE@CYGNETSARTSCHOOL.COM
WWW.CYGNETSARTSCHOOL.COM/NORTHSHROPSHIRE

TICKETS AVAILABLE NOW!

AMAZING LEGO DISPLAYS

NEW & RETIRED LEGO SETS

BUILD CHALLENGES

ACTIVITIES FOR ALL AGES

CHARITY TOMBOLA

MILLIONS OF LOOSE BRICKS

PLUS SO MUCH MORE!!



WREXHAM BRICKFESTIVAL.COM

20TH JUNE

WREXHAM UNIVERSITY SPORTS CENTRE
MORE LEGO[®] THAN YOU CAN DREAM OF

WREXHAM BRICK FESTIVAL

TICKETS ON SALE NOW!



20TH JUNE
WREXHAM UNIVERSITY SPORTS CENTRE
WREXHAM BRICK FESTIVAL
MORE LEGO THAN YOU CAN DREAM OF

SHREWSBURY REPAIR CAFE

Your radio doesn't work?
 Your jumper has a hole in it?
 Your ornament is broken?

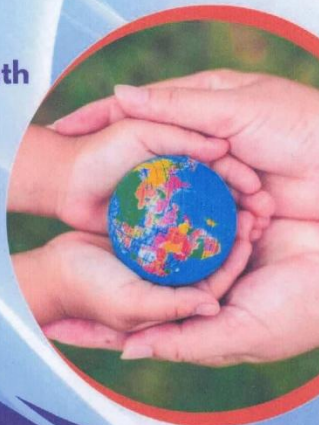


Bring it to the repair cafe
 Have it fixed & repaired
 Refreshments & cake

Shrewsbury United Reformed Church
 Coleham Head

3rd Saturday every month
 10am till 2pm

shrewsrepaircafe



Repairing the World
 One Item at a Time



COFFEE & CHAT Wem



3rd Thursday of each month
 13.00-14.45



Wem Library, 3 High St, Wem, Shrewsbury SY4 5AA

You can get free information, advice and support on all aspects of family life, at our Early Help Family Drop-In. You can chat, have a coffee and see how we can help. We support families with children aged 0-19 years (up to 25 years for young people with special educational needs and disabilities) We aim to make it easier for you to ask for help and get support when you need it.

REFRESHMENTS WILL BE PROVIDED

PLEASE BRING YOUR OWN SEALED CUP/TRAVEL MUG



shropshire.gov.uk/early-help



Info, advice and support,
 for families in Shropshire



Find us on:



Sign up to receive alerts from your local policing teams www.neighbourhoodmatters.co.uk



The SEND Local Offer



Lots of information and support for children and young people with SEND and their families, including:

- Education
- Health and wellbeing
- Family support
- Social care
- Preparing for adulthood
- Early help
- Things to do
- Education, health and care plan (EHCP)
- Travel and transport
- Financial support

local.offer@shropshire.gov.uk 0345 678 9063
www.shropshire.gov.uk/the-send-local-offer/



If you need help accessing the Local Offer please speak to your school or local library.

