

The Friday Post

Friday, 01 May 2026



www.clivecofeprimaryschool.co.uk
admin@clive-shropshire.sch.uk



WHAT'S NEW THIS WEEK?

- Meet the Governors - Mrs Rowlands
- Sickness & Diarrhoea
- Holiday Club
- Screen Time in Early Years
- Diary dates

	PE	PE	Woodland School
Dormouse	Monday (swimming)	Friday	Thursday
Red Squirrel	Monday	Tuesday (swimming)	Friday
Hedgehog	Monday	Friday	Wednesday
Badger	Monday	Thursday	Wednesday

MENU

w/c 4th May 2026: Week TWO

Please note the change in menu. Menus are available at [Clive CofE Primary School: School Meals](#).

WRAP AROUND CARE

It is **essential** that children are booked in through the online form. Click on the links below:

SUMMER (1) TERM 2026:

[BREAKFAST](#) [AFTER SCHOOL CLUB](#)

REPORTING CONCERNS ABOUT A CHILD

To report a concern call Shropshire Council's First Point of Contact (FPOC) - 0345 678 9021

ABSENCE

If your child is absent from school, for any reason, please do not forget to let us know. This can be done by phone, email or the school spider app. Unreported absences will, for safeguarding reasons, be followed up by emails, texts and phone calls. Thanks

DIARY DATES

Mon 4th May - Bank Holiday
 Mon 11th - Thurs 14th May - Y6 SATs
 Fri 22nd May - PD Day - **School Closed**
 Mon 25th - Fri 29th May - Half Term
 Thur 11th June - Individual and class photos
 Sat 4th July - FOCS Summer Fair
 Mon 6th &/or Tues 7th - Y6 transition days
 Thursday 23rd July - End of Term

HOLIDAY CLUB

Holiday Club will run again during the May Half Term holiday and on the PD day – Friday 22nd May, Tuesday 26th May, Wednesday 27th May and Thursday 28th May.

SICKNESS AND DIARRHOEA

NHS guidance states that children should not return to school until **48 hours** after the last episode. This is to avoid the possibility of tummy bugs being spread.

MEET THE GOVERNORS:

Mrs Rowlands

Mrs Rowlands was elected as a parent governor to represent the Governing Body to parents. She has particular interests in SEND and Safeguarding arising out of her own experiences in her work as a Development Manager for a Healthcare organisation. She has two children, one in Y7 and one in Y5. As with all governors, she can be contacted through the school office (mark any correspondence for her attention).

STAR PUPILS

Well done to Ciara, Oscar, Thomas, Joe, Callie, Pippa, Aaron, Tallon, Bodhi, Huckleberry, Henry, Felicity, Ted, Max, Xavier, Hector and Parker who all took part in the final mile for the Schools' Half Marathon last Saturday. It was a great event. As a result of participating, 2 trees will be planted in the UK as part of a major reforestation project. Congratulations on completing the half marathon!!



WALKING BUS

The walking bus is a service offered to parents to drop children at the bottom of the Glat and head off more quickly to work. It is staffed by volunteers who then walk the children up to school. If you are walking up to school anyway and are willing to help staff the bus please let me know in the office. At least one individual on the bus would need to be DBS checked. Without sufficient volunteers we would be unable to run the bus. We are very grateful to the small band of parents who staff the bus at present.



Please remember **NOT** to park on the yellow hatchings at the bottom of the Glat as this causes a hazard. Thanks.

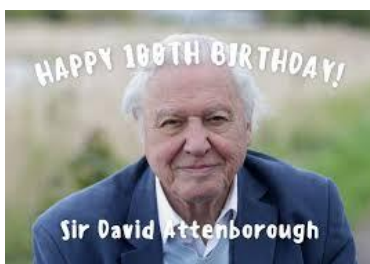
Our value for the term is 'Respect'.

SCREEN TIME IN EARLY YEARS

Screens are part of everyday life for young families. With 98% of two-year-olds watching screens daily, avoiding them altogether isn't realistic – but managing them well can make a difference to how young children grow and develop. Here's what you need to know about the government's new free guidance for parents. [Baby and toddler screen time guidance - Best Start in Life](#)

SIR DAVID ATTENBOROUGH

Friday 8th May is Sir David's 100th birthday. We shall be marking this occasion next week by completing some nature based activities. We would also like to create a more permanent feature near our school to celebrate his life's dedication to the natural environment. We have secured permission from Sansaw Estate to create a wild flower meadow/garden in the roundabout outside the gate (around the horse chestnut tree we use for remembrance). The ground needs turning over and prepping for this though. If anyone is able to spare a half hour to help with this next week we would be very grateful. Please get in touch and let us know. Thankyou.



Sir David Attenborough



FRIENDS OF CLIVE SCHOOL

CLIVE SCHOOL SUMMER 2026 TEA TOWELS

THE CHILDREN ARE DRAWING SELF-PORTRAITS TO GO ONTO A CLIVE SCHOOL TEA TOWEL

A PERFECT MOMENTO OF THE SCHOOL YEAR AND A GREAT GIFT FOR RELATIVES!

£5 EACH - ALL PROCEEDS GO TO FOCS TO SUPPORT OUR SCHOOL

ORDER BY FRIDAY 1ST MAY

PAYMENT BY BACS TO FOCS:

FRIENDS OF CLIVE SCHOOL
A/C 41637453 S/C 55-70-42



Please order via Google form here:

<https://forms.gle/XahXL54jTJ+NWDRh8>

Tea towels should hopefully arrive by end of May. Any queries please speak to Victoria Pocock.

Wem Tennis Club

YOU'RE INVITED! TENNIS TASTER SESSIONS



Turn up to try:

Cardio Tennis
Walking Tennis
Tennis
Pickleball

Sunday
May 3rd, 2026

10: 00am - 12:00 pm

Wem Tennis Club
Recreation Ground
SY4 5DA

We'd love to see you on court!

If you want any more information please get in touch with David Parry dparry.tennis@gmail.com or 07711 501359.

Hedgehog

AWARENESS WEEK

03-09 May 2026

© Photo Credit: Chris Morgan

BHPS
THE HEDGEHOG
CONSERVATION CHARITY

Donate to the 2026
#HEDGEHOGWEEK appeal:
justgiving.com/campaign/HAW26



The British Hedgehog Preservation Society, Hedgehog House, Dnustone, Ludlow, Shropshire SY8 3PL
Tel: 01584 800801 E-mail: info@britishhedgehogs.org.uk www.britishhedgehogs.org.uk
[@britishhedgehogsociety](https://www.instagram.com/britishhedgehogsociety) [facebook](https://www.facebook.com/britishhedgehogsociety) [youtube](https://www.youtube.com/britishhedgehogsociety) [linkedin](https://www.linkedin.com/britishhedgehogsociety) British Hedgehog Preservation Society
Reg Charity No. 1184542

SHROPSHIRE SAILING CLUB
OPEN DAY
COME & TRY SAILING

FREE!
TASTER SESSIONS!

Fun for all ages
No experience needed

★ **ALL EQUIPMENT PROVIDED**
 Just bring a spare set of clothes

★ **EXPERT INSTRUCTORS**

MONDAY
MAY 4TH
 (BANK HOLIDAY)
11:00 - 16:00

FREE ENTRY
 At Whitemere, Ellesmere, SY12 0HU

★ Sailing ★ Food ★ Family Fun ★ Clubhouse

www.sailshropshire.co.uk
membership@shropshiresailingclub.co.uk

RAPTORS
 ACTON REYNALD CC
 CC

"JOIN OUR LADIES SOFTBALL CRICKET TEAM"

TRAINING EVERY WEDNESDAY 7-8PM IN GRINSHILL
SEASON STARTS ON WEDNESDAY 6TH MAY
WE ARE LOOKING FOR MORE LADIES TO JOIN THE TEAM,
ALL ABILITIES WELCOME!

f CONTACT US VIA OUR FB PAGE FOR MORE DETAILS

ACTON REYNALDS CRICKET CLUB, GRINSHILL
 PRESENTS
FAMILY SOFTBALL CRICKET FESTIVAL

MONDAY 4TH MAY
11AM ONWARDS!
ALL AGES WELCOME!
 CHILDREN MUST BE ACCOMPANIED BY AN ADULT

BBQ & BAR

TO BOOK YOUR PLACE CALL:
RICHARD MANBY ON
07785 736080

Crane Quality Counselling
 Presents
"Every Shropshire Child Has A Voice"
 In recognition of
Children's Mental Health Week 2026

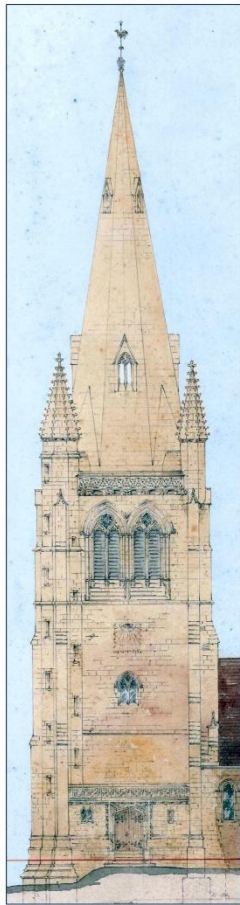
Friday 15th May 2026
6:00pm - 8:30pm

Adult Tickets : £7.00
 Junior Tickets : £3.50
 Under 11's and Tiny Tots : Free Entry

St Georges Parish Church
 Drinkwater Street,
 Frankwell,
 Shrewsbury,
 SY3 8QA

To Buy Tickets Scan QR Code Or Contact Us On
 01743 240546

Charity No. 1175610



CONCERT

in aid of
Cancer Research UK
and Clive Church

Given by young musicians
from Shrewsbury School

SATURDAY, 16 MAY
7 PM

ALL SAINTS' CHURCH
CLIVE

£12.50 (free for young people up to 18)

Book online at
www.buytickets.at/cliveconcert

For assistance:
cliveconcert@gmail.com
07920 511234

SCAN TO BOOK



Fenn's Whixall and Bettisfield Mosses National Nature Reserve



Family Wildlife Fun
Saturday 16th May 10am



Join us for a walk to spot birds,
butterflies, dragonflies and raft spiders.
We'll go bug hunting and pond dipping
to see what special creatures we can
find.

£6 per family of up to two adults and three children.
Places are strictly limited.

To book your place or for more information, search
Natural England on Eventbrite, scan the QR code,
or email:
info.whixall@naturalengland.org.uk



This event is not suitable for dogs.

www.gov.uk/natural-england

TERM TIME CLASSES

HOLIDAY WORKSHOPS



15% OFF
use code:
WULVJ4T

May Half Term Holiday Workshops

FOR AGES 5-12

Colours of the Rainbow

The Wynnstay Hotel,
43 Church Street, Oswestry SY11 2SZ

£25/Class / £45/Day / £135/Week

07796352162 | [NORTHSHROPSHIRE@CYGNETSARTSCHOOL.COM](mailto:northshropshire@cygnetsartschool.com)
WWW.CYGNETSARTSCHOOL.COM/NORTHSHROPSHIRE

Cygnets teaches traditional drawing, painting, and
sculpture, combined with unique projects, experienced
teachers & professional quality materials.

We run two holiday workshops per day, so students
can attend individual classes, or bring a packed
lunch and stay for both!



Tuesday 26th May

10.30 - 12PM Red 'The Elephants' with
Fineliner & Watercolour

12.30 - 2PM Orange 'Still Life With
Oranges' with Oil Pastels

Wednesday 27th May

10.30 - 12PM Yellow 'The Kiss' with Inks

12.30 - 2PM Green 'Tiger in a Tropical
Storm' with Colouring Pencils
and Soft Pastels



Thursday 28th May

10.30 - 12PM Blue 'Le Rêve de Chagall
sur Vitebsk' with Gouache

12.30 - 2PM Purple 'Saint Tropez in the
Pine Woods' with Acrylic

Lots of different projects to choose from!

northshropshire@cygnetsartschool.com



cygnetsartschool.com/northshropshire

Stop using pesticides, poisons & garden chemicals!



Protect hedgehogs & their food chain.



The British Hedgehog Preservation Society, Hedgehog House, Dhustone, Ludlow, Shropshire SY8 3PL
Tel: 01584 890801 E-mail: info@britishhedgehogs.org.uk www.britishhedgehogs.org.uk
@thehedgehogsociety @hedgehogsociety British Hedgehog Preservation Society
Reg Charity No. 1164542

SHREWSBURY REPAIR CAFE

Your radio doesn't work?
Your jumper has a hole in it?
Your ornament is broken?

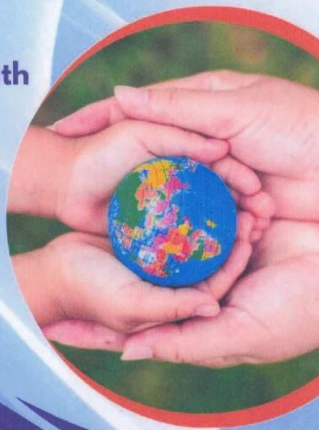


Bring it to the repair cafe
Have it fixed & repaired
Refreshments & cake

Shrewsbury United Reformed Church
Coleham Head

3rd Saturday every month
10am till 2pm

[shrewsrepaircafe](https://www.facebook.com/shrewsrepaircafe)



Repairing the World
One Item at a Time



COFFEE & CHAT Wem



3rd Thursday of each month



13.00-14.45

Wem Library, 3 High St, Wem, Shrewsbury SY4 5AA

You can get free information, advice and support on all aspects of family life, at our Early Help Family Drop-In. You can chat, have a coffee and see how we can help. We support families with children aged 0-19 years (up to 25 years for young people with special educational needs and disabilities) We aim to make it easier for you to ask for help and get support when you need it.

REFRESHMENTS WILL BE PROVIDED

PLEASE BRING YOUR OWN SEALED CUP/TRAVEL MUG



shropshire.gov.uk/early-help



Info, advice and support,
for families in Shropshire

Find us on:



Sign up to receive alerts from your local policing teams www.neighbourhoodmatters.co.uk



The SEND Local Offer



Lots of information and support for children and young people with SEND and their families, including:

- Education
- Health and wellbeing
- Family support
- Social care
- Preparing for adulthood
- Early help
- Things to do
- Education, health and care plan (EHCP)
- Travel and transport
- Financial support

local.offer@shropshire.gov.uk 0345 678 9063
www.shropshire.gov.uk/the-send-local-offer/



If you need help accessing the Local Offer please speak to your school or local library.

