

# The Friday Post



Friday, 24 April 2026



[www.clivecofeprimaryschool.co.uk](http://www.clivecofeprimaryschool.co.uk)  
[admin@clive.shropshire.sch.uk](mailto:admin@clive.shropshire.sch.uk)

## WHAT'S NEW THIS WEEK?

- Meet the Governors - Mrs Simms
- Walking Bus
- FOCS T-Towels
- Clothing labels
- Holiday Club
- Screen Time in Early Years
- Diary dates

	PE	PE	Woodland School
Dormouse	Monday (swimming)	Friday	Thursday
Red Squirrel	Monday	Tuesday (swimming)	Friday
Hedgehog	Monday	Friday	Wednesday
Badger	Monday	Thursday	Wednesday

## MENU

w/c 27<sup>th</sup> April 2026: Week ONE

Please note the change in menu. Menus are available at [Clive CofE Primary School: School Meals](#).

## WRAP AROUND CARE

It is **essential** that children are booked in through the online form. Click on the links below:

SUMMER (1) TERM 2026:

[BREAKFAST](#)      [AFTER SCHOOL CLUB](#)

## REPORTING CONCERNS ABOUT A CHILD

To report a concern call Shropshire Council's First Point of Contact (FPOC) - **0345 678 9021**

## ABSENCE

If your child is absent from school, for any reason, please do not forget to let us know. This can be done by phone, email or the school spider app. Unreported absences will, for safeguarding reasons, be followed up by emails, texts and phone calls. Thanks

## DIARY DATES

Sat 25<sup>th</sup> Apr - Schools' Half Marathon (9am)  
 Mon 4<sup>th</sup> May - Bank Holiday  
 Mon 11<sup>th</sup> - Thurs 14<sup>th</sup> May - Y6 SATs  
 Fri 22<sup>nd</sup> May - PD Day - **School Closed**  
 Mon 25<sup>th</sup> - Fri 29<sup>th</sup> May - Half Term  
 Thur 11<sup>th</sup> June - Individual and class photos  
 Sat 4<sup>th</sup> July - FOCS Summer Fair  
 Mon 6<sup>th</sup> &/or Tues 7<sup>th</sup> - Y6 transition days  
 Thursday 23<sup>rd</sup> July - End of Term

## HOLIDAY CLUB

Holiday Club will run again during the May Half Term holiday and on the PD day — Friday 22<sup>nd</sup> May, Tuesday 26<sup>th</sup> May, Wednesday 27<sup>th</sup> May and Thursday 28<sup>th</sup> May.

## MEET THE GOVERNORS:

### Mrs Simms

Mrs Simms is a governor appointed by the Fields Trust Board. Working in public sector asset management, she brings a wealth of property experience to the role as well as being a keen advocate for stakeholder engagement, environmental issues, and children and staff wellbeing. Her youngest child currently attends the school with her eldest leaving for secondary school last year. As with all governors, she can be contacted through the school office (mark any correspondence for her attention).

## STAR PUPILS

Huge congratulations to Julia who has attained her black belt in karate. This is a wonderful achievement. Her group now need to find an alternative instructor for her as she is the same category as her current instructors! Well done Julia!!



## CLOTHING LABELS

Now the weather is warming up and the chances of taking jumpers off increase please could you ensure that all clothing that is likely to be removed is labelled with your child(ren)'s name(s). Unfortunately the ability to sniff a jumper and know who it belongs to (yes, this is a widely recognised phenomenon in schools) is removed from staff!! 🤔

## SCREEN TIME IN EARLY YEARS

Screens are part of everyday life for young families. With 98% of two-year-olds watching screens daily, avoiding them altogether isn't realistic — but managing them well can make a difference to how young children grow and develop. Here's what you need to know about the government's new free guidance for parents. [Baby and toddler screen time guidance - Best Start in Life](#)

Our value for the term is 'Respect'.

### WHITCHURCH JUNIOR PARKRUN

"Our Volunteer team has been working hard to bring a weekly 2k junior parkrun to Jubilee Park in Whitchurch. Since our last update earlier this month we have held our second core team meeting, celebrated our funding donation successes, walked through the park discussing and risk assessing suitable routes and agreed the next steps.

Whilst we have made great progress so far, we simply need, and would love more of you to get involved and join us. The foundations are in place, now we need the Volunteers to make it sustainable and make a lasting impact.

By helping set up a local event, you're creating a free, inclusive space where children can build confidence, friendships, a love of exercise and the outdoors.

But it's not all about the children. You will discover a network of like-minded Volunteers united by positivity and community spirit. New friendships are guaranteed. Whether you want to marshal, organise or cheer, your time and enthusiasm will help shape happier and healthier futures for local children and their families.

You can get in contact by either replying here, DM or email [sally.mcdonald@parkrun.com](mailto:sally.mcdonald@parkrun.com)

Or.....

Come and meet us and have a chat at Whitchurch Food and Drink Festival, Jubilee Park, Saturday 16th May 2026, 10 a.m. onwards. Look out for our stall by the junior parkrun flag.

We look forward to meeting you"

### WALKING BUS

The walking bus is a service offered to parents to drop children at the bottom of the Glat and head off more quickly to work. It is staffed by volunteers who then walk the children up to school. If you are walking up to school anyway and are willing to help staff the bus please let me know in the office. At least one individual on the bus would need to be DBS checked.

Without sufficient volunteers we would be unable to run the bus. We are very grateful to the small band of parents who staff the bus at present.



Please remember **NOT** to park on the yellow hatchings at the bottom of the Glat as this causes a hazard.

Thanks.



# CLIVE SCHOOL SUMMER 2026 TEA TOWELS

THE CHILDREN ARE DRAWING SELF-  
PORTRAITS TO GO ONTO A CLIVE  
SCHOOL TEA TOWEL

A PERFECT MOMENTO OF THE  
SCHOOL YEAR AND A GREAT GIFT  
FOR RELATIVES!

£5 EACH - ALL PROCEEDS GO TO  
FOCS TO SUPPORT OUR SCHOOL

ORDER BY FRIDAY 1<sup>ST</sup> MAY

PAYMENT BY BACS TO FOCS:

FRIENDS OF CLIVE SCHOOL  
A/C 41637453 S/C 55-70-42



Please order via Google form here:

<https://forms.gle/XahXL54jTJtNWDRh8>

Tea towels should hopefully arrive by end of May. Any queries please speak to Victoria Pocock.

Wem Tennis Club

# YOU'RE INVITED! TENNIS TASTER SESSIONS



Turn up to try:

Cardio Tennis  
Walking Tennis  
Tennis  
Pickleball

Sunday  
May 3rd, 2026

10:00am - 12:00 pm

Wem Tennis Club  
Recreation Ground  
SY4 5DA

We'd love to see you on court!

If you want any more information please get in touch with David Parry [dparry.tennis@gmail.com](mailto:dparry.tennis@gmail.com) or 07711 501359.

## Wem Repair Café

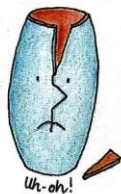
25<sup>th</sup> April 10-12am 2026 Wem Library

Bring along your

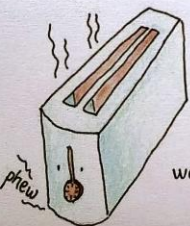
Small electricals, Clothes and textiles, Bikes, Toys,  
Furniture or anything else that might need repairing.



Our Volunteers will offer advice,  
try to repair and revive your items  
saving you money  
and reducing waste going to landfill.



Enjoy a cuppa, cookies or cake while you wait.



[waca@wemareaclimateaction.org.uk](mailto:waca@wemareaclimateaction.org.uk)



## Hedgehog AWARENESS WEEK

03-09 May 2026



© Photo Credit: Chris Morgan

**BHPS**  
THE HEDGEHOG  
CONSERVATION CHARITY



Donate to the 2026  
#HEDGEHOGWEEK appeal:  
[justgiving.com/campaign/HAW26](https://www.justgiving.com/campaign/HAW26)



The British Hedgehog Preservation Society, Hedgehog House, Dhustone, Ludlow, Shropshire SY8 3PL  
Tel: 01584 890801 E-mail: [info@britishhedgehogs.org.uk](mailto:info@britishhedgehogs.org.uk) [www.britishhedgehogs.org.uk](http://www.britishhedgehogs.org.uk)  
[@thehedgehogsociety](https://www.facebook.com/britishhedgehogsociety) [@hedgehogsociety](https://www.instagram.com/hedgehogsociety) [British Hedgehog Preservation Society](https://www.youtube.com/channel/UC1194542)  
Reg Charity No. 1194542

## Crane Quality Counselling

Presents  
"Every Shropshire  
Child Has A Voice"

In recognition of  
**Children's Mental Health Week 2026**

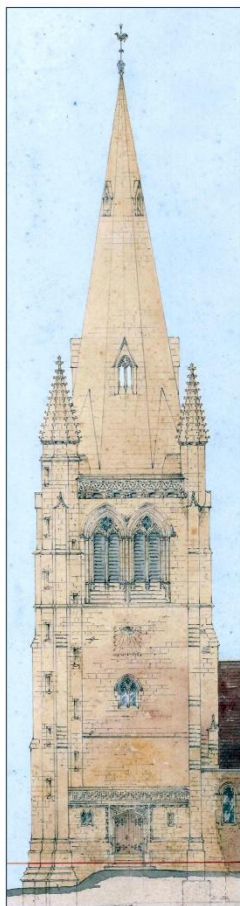
**Friday 15<sup>th</sup> May 2026**  
**6:00pm - 8:30pm**

- Adult Tickets : £7.00
- Junior Tickets : £3.50
- Under 11's and Tiny Tots : Free Entry

St Georges Parish Church  
Drinkwater Street,  
Frankwell,  
Shrewsbury,  
SY3 8QA

To Buy Tickets Scan QR Code Or Contact Us On  
01743 240546

Charity No. 1173610



# CONCERT

in aid of  
Cancer Research UK  
and Clive Church

Given by young musicians  
from Shrewsbury School

**SATURDAY, 16 MAY**  
**7 PM**

**ALL SAINTS' CHURCH**  
**CLIVE**

£12.50 (free for young people up to 18)

Book online at  
[www.buytickets.at/cliveconcert](http://www.buytickets.at/cliveconcert)

For assistance:  
[cliveconcert@gmail.com](mailto:cliveconcert@gmail.com)  
07920 511234



**SHROPSHIRE SAILING CLUB**  
**OPEN DAY**  
**COME & TRY SAILING**

**FREE!**  
TASTER SESSIONS!

**MONDAY**  
**MAY 4TH**  
(BANK HOLIDAY)  
**11:00 - 16:00**

Fun for all ages  
No experience needed

★ ALL EQUIPMENT PROVIDED  
Just bring a spare set of clothes

★ EXPERT INSTRUCTORS

★ Sailing   ★ Food   ★ Family Fun   ★ Clubhouse

**FREE ENTRY**  
At Whitemere, Ellesmere, SY12 0HU

[www.sailshropshire.co.uk](http://www.sailshropshire.co.uk)  
[membership@shropshiresailingclub.co.uk](mailto:membership@shropshiresailingclub.co.uk)

## Fenn's Whixall and Bettisfield Mosses National Nature Reserve



**Family Wildlife Fun**  
**Saturday 16th May 10am**



Join us for a walk to spot birds, butterflies, dragonflies and raft spiders. We'll go bug hunting and pond dipping to see what special creatures we can find.

£6 per family of up to two adults and three children. Places are strictly limited.

To book your place or for more information, search Natural England on Eventbrite, scan the QR code, or email:  
[info.whixall@naturalengland.org.uk](mailto:info.whixall@naturalengland.org.uk)



This event is not suitable for dogs.

[www.gov.uk/natural-england](http://www.gov.uk/natural-england)

## Stop using pesticides, poisons & garden chemicals!



### Protect hedgehogs & their food chain.



The British Hedgehog Preservation Society, Hedgehog House, Dhustone, Ludlow, Shropshire SY8 3PL  
Tel: 01584 890801 E-mail: [info@britishhedgehogs.org.uk](mailto:info@britishhedgehogs.org.uk) [www.britishhedgehogs.org.uk](http://www.britishhedgehogs.org.uk)

[@thehedgehogsociety](https://www.facebook.com/thehedgehogsociety)

[@hedgehogsociety](https://www.facebook.com/hedgehogsociety)

[British Hedgehog Preservation Society](https://www.facebook.com/britishhedgehogsociety)

Reg Charity No. 1164542

# SHREWSBURY REPAIR CAFE

Your radio doesn't work?  
Your jumper has a hole in it?  
Your ornament is broken?

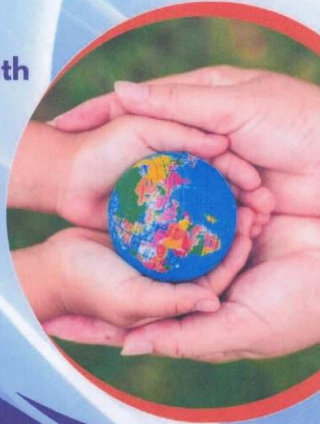


Bring it to the repair cafe  
Have it fixed & repaired  
Refreshments & cake

Shrewsbury United Reformed Church  
Coleham Head

3<sup>rd</sup> Saturday every month  
10am till 2pm

shrewsrepaircafe



Repairing the World  
One Item at a Time



Info, advice and support,  
for families in Shropshire

Find us on:



Sign up to receive alerts from your local policing  
teams [www.neighbourhoodmatters.co.uk](http://www.neighbourhoodmatters.co.uk)



## The SEND Local Offer



Lots of information and support for children and  
young people with SEND and their families, including:

- Education
- Health and wellbeing
- Family support
- Social care
- Preparing for adulthood
- Early help
- Things to do
- Education, health and care plan (EHCP)
- Travel and transport
- Financial support

[local.offer@shropshire.gov.uk](mailto:local.offer@shropshire.gov.uk) 0345 678 9063  
[www.shropshire.gov.uk/the-send-local-offer/](http://www.shropshire.gov.uk/the-send-local-offer/)



If you need help accessing the Local Offer  
please speak to your school or local library.



# COFFEE & CHAT Wem



3<sup>rd</sup> Thursday of each  
month



13.00-14.45

Wem Library, 3 High St, Wem, Shrewsbury SY4 5AA

You can get free information, advice and support on all aspects of family life, at our Early Help Family Drop-In. You can chat, have a coffee and see how we can help. We support families with children aged 0-19 years (up to 25 years for young people with special educational needs and disabilities) We aim to make it easier for you to ask for help and get support when you need it.

REFRESHMENTS WILL BE PROVIDED

\*PLEASE BRING YOUR OWN SEALED CUP/TRAVEL MUG\*



[shropshire.gov.uk/early-help](http://shropshire.gov.uk/early-help)

