

The Friday Post



Friday, 20 March 2026



www.clivecofeprimaryschool.co.uk
admin@clive.shropshire.sch.uk

WHAT'S NEW THIS WEEK?

- Meet the staff - Mr Bentham
- Wildlife Photography competition
- Shawbury Comets
- Cygents holiday activities
- Easter Service
- FOCS
- Holiday Club
- Diary dates

| | PE | PE | Woodland School |
|--------------|--------------------------|----------|-----------------|
| Dormouse | Monday | Friday | Thursday |
| Red Squirrel | Tuesday | Thursday | Friday |
| Hedgehog | Tuesday (final swimming) | | Monday |
| Badger | Monday | Thursday | Wednesday |

MENU

w/c 23rd March 2026: Week TWO

Please note the change in menu. Menus are available at [Clive CofE Primary School: School Meals](#).

We adopt a zero-debt policy for dinner money. Please ensure that your child's dinner account is regularly topped up.

WRAP AROUND CARE

It is **essential** that children are booked in through the online form. Click on the links below:

SUMMER (1) TERM 2026:

[BREAKFAST](#) [AFTER SCHOOL CLUB](#)

REPORTING CONCERNS ABOUT A CHILD

To report a concern call Shropshire Council's First Point of Contact (FPOC) - **0345 678 9021**

DIARY DATES

Fri 27th Mar - End of term
 Mon 4th May - Bank Holiday
 Mon 11th - Thurs 14th May - Y6 SATs
 Fri 22nd May - PD Day - School Closed

EASTER SERVICE

We will hold our Easter Service in All Saints' Church, Clive at 2.45pm on Friday 27th March. The children will be dismissed home after the service.

All are more than welcome to attend the service.

HOLIDAY CLUB

Holiday Club will be available during the Easter Holidays:
 Monday 30th March - Thursday 2nd April
 and
 Tuesday 7th - Thursday 9th April

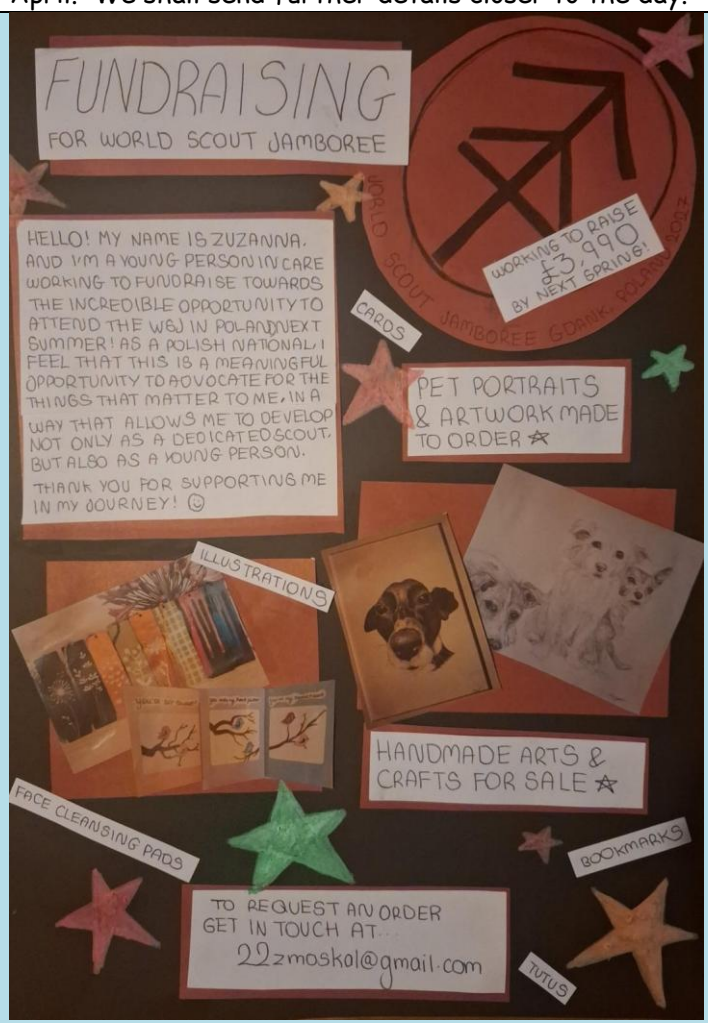
MEET THE STAFF:

Mr Bentham

Mr Bentham is one of youngest members of staff. He is currently studying for A-Levels and preparing to head off to university in September. He has been a great help, and very popular, at After School Club and Sports Club. Among his many interests, he has a passion for running and was a keen competitor when he attended Clive School and competed in the Cross-Country event.

DR BIKE

You may have seen in the press recently that we have been awarded some grant funding for sustainable travel. Our bid was around engaging with Dr Bike to provide a checking service of bikes belonging to children, staff AND parents. We have arranged this for **FRIDAY** 24th April. We shall send further details closer to the day.



Our value for the half term is 'Resilience'.

MENINGITIS

If you are at all worried or concerned about this there is information at

NHS: <https://www.nhs.uk/conditions/meningitis/>

The Meningitis Research Foundation: www.meningitis.org

Helpline UK 080 8800 3344

Meningitis Now: www.meningitisnow.org

Helpline 0808 80 10 388

or helpline@meningitisnow.org

UKHSA blog post: [Meningitis B outbreak: what you need to know](#) - UK Health Security Agency

FOCS

Easter trail

This year the Easter trail will be up from Saturday 28th March to Sunday 12th April so you can choose any day that suits you to complete it. Trail sheets will be on sale the week before and at the Clive Village Hall Coffee Shop on Friday 3rd April (Good Friday). Extra refreshments will be available at the coffee shop for trail goers to purchase. The trail is £3.50 per child which includes a medium size Easter egg ('Free From' alternatives available too).



Easter Trail

The trail will run throughout the Easter holidays so you can pick a day that suits you OR join us on the morning of Friday 3rd April when FOCS will be running a craft activity and the village hall coffee shop will be open for refreshments!

Summer Fete

Save the date - Saturday 4th July 2026

Donation to FOCS

FOCS has received a kind donation from the proceeds of The Hub's winter beer festival. We are most grateful and thank the organisers for thinking of us.

FOCS support to school

FOCS has agreed to fund some new resources for Woodland School and continue to invest in the school community garden. Our largest expense remains supporting educational visits by paying 50% of all coach costs.

Clive CE Primary School Community Garden

Why?

- Teaches about how things grow
- Develops fine and gross motor skills
- Develops understanding of 'farm to fork'
- Enhances understanding of the importance of biodiversity
- Encourages positive mental wellbeing in nature
- Encourages exploration of living things and how they interact
- Develops links between the school and wider community
- It's fun, free and full of fresh air!

Where?

The garden is situated on the field behind the old cottage next to school.



Palm Sunday
29th March 2026
Family walk around the hill
10.00 - 11.00am
Please join us for a
A joyful Family Worship service at 11.00am
Clive Church followed by a light lunch at mid-day.

Bring and Share lunch

Please feel free to bring some food to share with others at lunchtime - everything is welcome - sandwiches, quiches, cakes etc etc

We look forward to welcoming you all.

FOCS UPDATE

Small Schools Cross Country

Saturday 21st March, 10.00-12.00 - FOCS is supporting the school cross country event by selling refreshments, bacon/sausage baps and cakes. We will also have our infamous Wheel of Fortune and a large Easter egg and Easter hamper to raffle off. Even if your child is not running in the event then come along for a morning of family fun and to cheer on classmates!

STARS

A huge well done to all the children who have represented the school at recent cross country events at Shrewsbury Sports Village, Attingham Park and Oswestry. Well done to Oliver who came 12th in a Y6/7 race at Oswestry. Thanks must also go to the parents for taking the children.



SHREWSBURY REPAIR CAFE

Your radio doesn't work?
Your jumper has a hole in it?
Your ornament is broken?

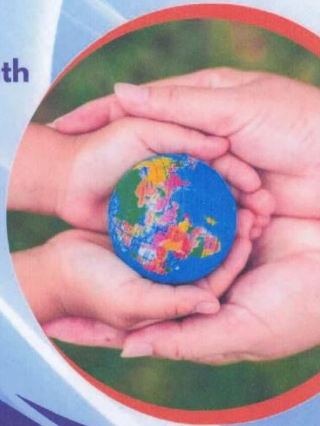


Bring it to the repair cafe
Have it fixed & repaired
Refreshments & cake

Shrewsbury United Reformed Church
Coleham Head

3rd Saturday every month
10am till 2pm

shrewsrepaircafe



Repairing the World
One Item at a Time



introduce



A safe and fun
environment for
disabled children to
kickstart their football
journey!



Boys & Girls
ages:
5-11

MONDAY'S 6 - 7PM

DATE : TBC

SHAWBURY RECREATIONAL
CENTRE, SY4 4PB

EMAIL ON:
WELFARE.SHAWBURYUNITEDFC@
GMAIL.COM

AIMEE : 07708 250905
SIMON : 07780 703167



SM&AG
DEADLINE: FRI 27 MAR 2026

Photo © John More



WILDLIFE PHOTOGRAPHY COMPETITION

Competition

A call to photographers of all ages - Capture the wild

Enter our Wildlife Photography Competition by Friday 27 March, with categories for under 11s, ages 12-18 and adults. See website for details:

www.shropshiremuseums.org.uk/events/



WHITCHURCH PROSTATE SUPPORT GROUP



Every 2nd & 4th Thursday of the month
7-9pm
Whitchurch Rugby Club

A confidential, supportive space for men
living with prostate cancer

Whether you're newly diagnosed, in
treatment, monitoring your psa, or adjusting
after treatment, you are welcome here

What?

Honest conversations with other men who
understand
Supportive, Respectful, judgement-free discussion

Who?

Men with prostate cancer (any stage)
or prostate concerns or monitoring



CONFIDENTIAL • RESPECTFUL • EMPATHETIC



COFFEE & CHAT

Wem



3rd Thursday of each month
13.00-14.45



Wem Library, 3 High St, Wem, Shrewsbury SY4 5AA

You can get free information, advice and support on all aspects of family life, at our Early Help Family Drop-In. You can chat, have a coffee and see how we can help. We support families with children aged 0-19 years (up to 25 years for young people with special educational needs and disabilities) We aim to make it easier for you to ask for help and get support when you need it.

REFRESHMENTS WILL BE PROVIDED

PLEASE BRING YOUR OWN SEALED CUP/TRAVEL MUG



shropshire.gov.uk/early-help



Cygnets teaches traditional drawing, painting, and sculpture, combined with unique projects, experienced teachers & professional quality materials.

We run two holiday workshops per day, so students can attend individual classes, or bring a packed lunch and stay for both!



Tuesday 31st March

10.30 - 12PM Chick with Clay

12.30 - 2PM Murmuration with Gouache



Wednesday 1st April

10.30 - 12PM Hare with Fineliner & Watercolour

12.30 - 2PM Colourful Eggs with Mixed Pastels



Thursday 2nd April

10.30 - 12PM Cygnets with Acrylic

12.30 - 2PM Feather in Charcoal



Lots of different projects to choose from!



northshropshire@cygnetsartschool.com

cygnetsartschool.com/northshropshire

TERM TIME CLASSES

HOLIDAY WORKSHOPS



Easter Holiday Workshops

FOR AGES 5-12+

Springtime Wonders

15% OFF
use code:
EBJ831

The Wynnstay Hotel,
43 Church Street, Oswestry SY11 2SZ

£25/Class / £45/Day / £135/Week

07796352162 | [NORTHSHROPSHIRE@CYGNETSARTSCHOOL.COM](mailto:northshropshire@cygnetsartschool.com)
www.cygnetsartschool.com/northshropshire

'A terrific performer...she needs to be seen and heard wherever possible.'
MICHAEL ROSEN

JUDE SIMPSON

A NOISE ANNOYS

A FAMILY SHOW FEATURING POETRY, SONGS, AND SILLINESS

'Witty, engaging, fun'

'Loved how interactive it was'

'Great for all ages'

First presented at: CAMBRIDGE JUNCTION

Supported by: LINDSAY TREATMENT of the Deaf

Monday 30th March, 10.30am
Shropshire Hills Discovery Centre, SY7 9RS

Tickets: Adults £5, Child £3

www.artsalive.co.uk

01588 676060



Pond Dipping

Easter Holiday Activity

Monday 30th March - Friday 3rd April
AND
Monday 6th - Friday 10th April

4-11
year
olds

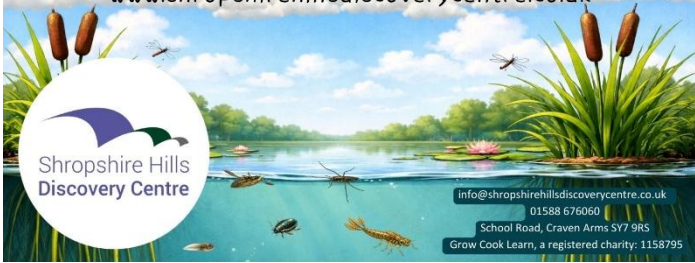
£5 per
child

This Easter holidays, explore a fascinating under water world as you dip our pond for mini beasts to identify. Draw or take photos of your favourites.

2pm
-
3.30pm

Book
Online

www.shropshirehillsdiscoverycentre.co.uk



Shropshire Hills
Discovery Centre

info@shropshirehillsdiscoverycentre.co.uk
01588 676060

School Road, Craven Arms SY7 9RS
Grow Cook Learn, a registered charity: 1158795



Shrewsbury Town Foundation

Easter Holiday Clubs

Shrewsbury at The Croud Meadow, SY2 6ST
Ludlow at Bromfield Rd, Ludlow SY8 2BN

For children aged 5 to 11, our holiday clubs are open to all abilities with a focus on fun and sports! Groups of mixed age and ability

9am – 3pm 30th March and 31st March at Ludlow

9am – 3pm 30th March – 2nd April at Shrewsbury

9am – 3pm 7th April – 10th April at Shrewsbury

Scan the QR code or visit our website to book a single day for £18

Foundationstfc.co.uk/fun

Get in touch

E: admin@foundationstfc.co.uk

T: 01743 289177 opt 6



Shrewsbury Town Foundation

Easter HAF

Shrewsbury at
The Croud Meadow, SY2 6ST

Ludlow at
Bromfield Rd, Ludlow SY8 2BN

For children aged 5 to 11, in receipt of free school meals, our HAF clubs are open to access fun activities and food in the school holidays

9am – 3pm 30th and 31st at Ludlow

9am – 3pm 30th March – 2nd April at Shrewsbury

Scan the QR code or visit our website to book a single day

Foundationstfc.co.uk/fun

Get in touch

E: admin@foundationstfc.co.uk

T: 01743 289177 opt 6



Shropshire
family
Information Service

Info, advice and support,
for families in Shropshire

Find us on:



Shropshire
Council



Sign up to receive alerts from your local policing teams www.neighbourhoodmatters.co.uk

West Mercia
POLICE

The SEND Local Offer



Lots of information and support for children and young people with SEND and their families, including:

- Education
- Health and wellbeing
- Family support
- Social care
- Preparing for adulthood
- Early help
- Things to do
- Education, health and care plan (EHCP)
- Travel and transport
- Financial support

local.offer@shropshire.gov.uk 0345 678 9063
www.shropshire.gov.uk/the-send-local-offer/



If you need help accessing the Local Offer please speak to your school or local library.

Shropshire
Council