

WELCOME TO YEAR 6

2025-26



WHO'S IN YEAR 6?

Class Teacher: Mrs Garlick

Teaching Assistants: Mrs Comstive,
Mrs Patel, Mrs Maiden, Miss Bishop, Mrs
Eckersley & Mrs Fitzsimons

Volunteers: Mrs Corbett



Values at St John's

At St. John's Church of England Primary School our Christian values are at the heart of everything we do. Our whole school community work together to create JOY in living and learning.

Our school values are:

- Respect
- Thankfulness
- Compassion
- Truthfulness
- Trust
- Responsibility



Our school motto is:

**'The JOY of the Lord is
Your Strength'**
(Nehemiah 8:10)

JOY represents **JESUS, OTHERS, YOURSELF**

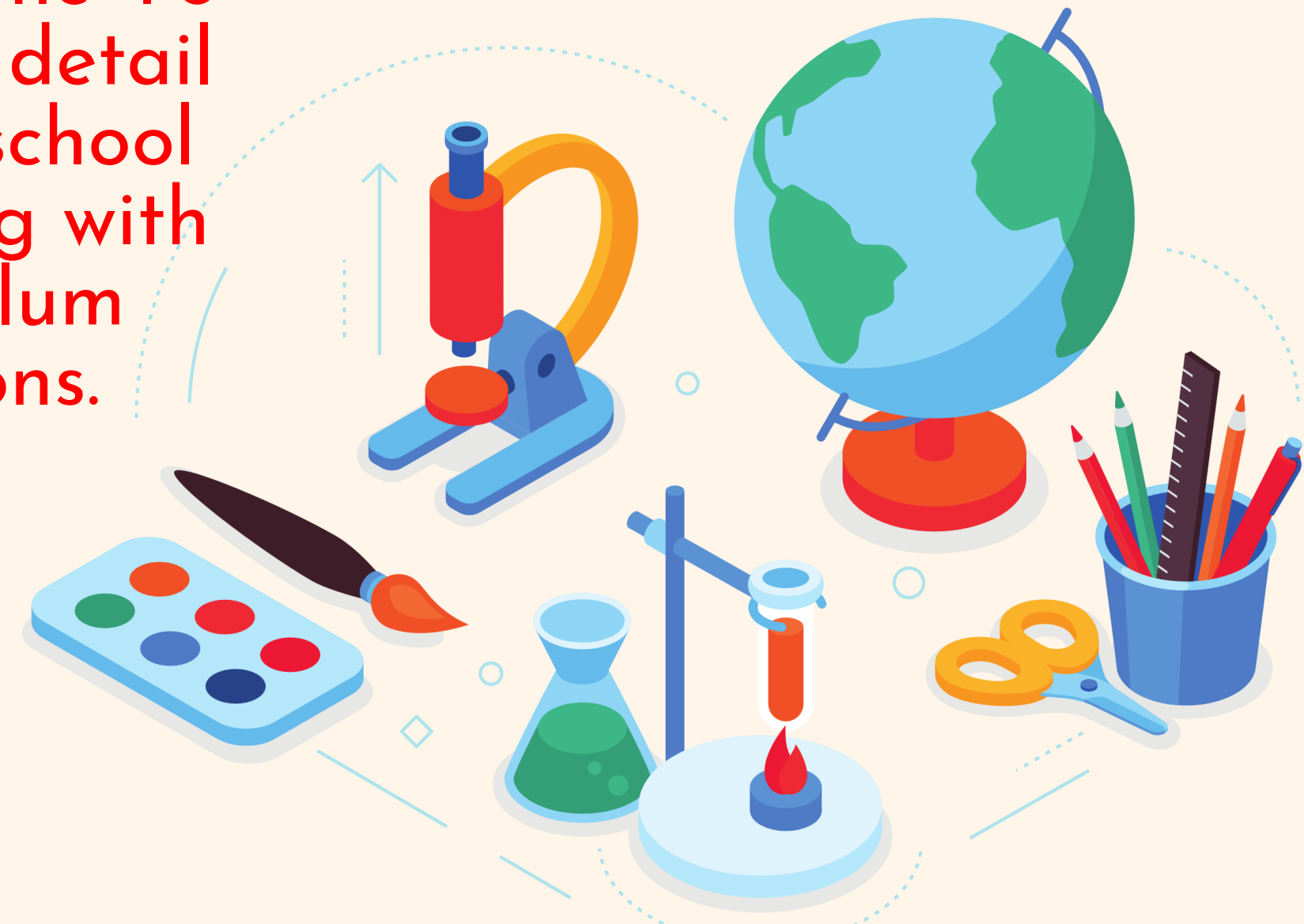
- Give your heart to **JESUS** and follow his example
 - Build positive relationships with **OTHERS**
 - Be proud of **YOURSELF**

Year 6 Curriculum

We follow the National Curriculum.

- English (including reading, writing, SPaG and spoken language)
- Maths
- Science
- RE
- Computing
- Art
- Design & Technology
- Music
- PE
- Modern Foreign Languages - French
- History
- Geography
- PSHE

You can see the Y6 curriculum in detail over on the school website, along with our curriculum expectations.





Mathematics

- Use negative numbers in context and calculate intervals across zero.
- Compare and order numbers up to 10,000,000.
- Identify common factors, common multiples and prime numbers.
- Round any whole number to a required degree of accuracy.
- Identify the value of each digit to 3 decimal places.
- Use knowledge of order of operations to carry out calculations involving four operations.
- Multiply:
 - 4-digit by 2-digit
- Divide:
 - 4-digit by 2-digit
- Add and subtract fractions with different denominators and mixed numbers.
- Multiply simple pairs of proper fractions, writing the answer in the simplest form.
- Divide proper fractions by whole numbers.
- Calculate % of whole number.



Reading

- Refer to text to support opinions and predictions.
- Give a view about choice of vocabulary, structure, etc.
- Distinguish between fact and opinion.
- Appreciate how a set of sentences has been arranged to create maximum effect.
- Recognise:
 - complex sentences with more than one subordinate clause
 - phrases which add detail to sentences
- Explain how a writer has used sentences to create particular effects.
- Skim and scan to aide note-taking.



Writing

- Use subordinate clauses to write complex sentences.
- Use passive voice where appropriate.
- Use expanded noun phrases to convey complicated information concisely (e.g. The fact that it was raining meant the end of sports day).
- Use a sentence structure and layout matched to requirements of text type.
- Use semi-colon, colon or dash to mark the boundary between independent clauses.
- Use colon to introduce a list and semi colon within a list.
- Use correct punctuation of bullet points.
- Use hyphens to avoid ambiguity.
- Use full range of punctuation matched to requirements of text type.
- Use wide range of devices to build cohesion within and across paragraphs.
- Use paragraphs to signal change in time, scene, action, mood or person.
- Write legibly, fluently and with increasing speed.

Handwriting at St. John's

Handwriting is a skill that affects written communication across the curriculum. Our aim is that children are able to write with ease, speed and legibility.

In Years 4, 5 and 6, children will be expected to use cursive handwriting in all areas of the curriculum.

Children will have dedicated time during the week to practice their handwriting.

For children to achieve the expected standard in writing in Year 6, they **MUST** show they can write joined up for a sustained amount of time / longer piece of writing consistently.

This font will be used to model to the children within lessons. Teachers will also model joined handwriting expectations.

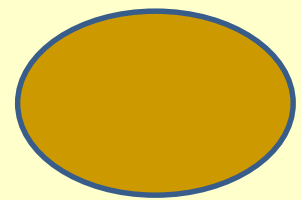
- Remember we always start ALL letters on the line.
- We have tall letters and small letters.
- We have letters that sit on the line.
- We have letters that go under the line.
- We have letters that woosh... (curved)
- We have letters that reach... (straight)
- Have a go and do your best... Don't give up...

Attendance Matters

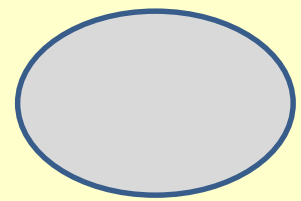


- Every child has a legal entitlement to attend school regularly.
- Good attendance and punctuality are vital, as it not only impacts academic progress, but also your child's general wellbeing.
- We continually monitor attendance and punctuality at St. John's and want to make sure that parents are well informed if there are concerns. You will be informed each term if your child's attendance is of concern.

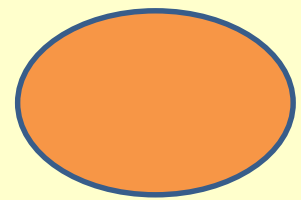
Attendance Matters



96% and above = good attendance



Between 90-95% = some improvement required. You will receive a Class Dojo message to notify you, and an attendance plan may be required as a supportive measure.



Below 90%- persistent absence. A support plan will be required to work in partnership with you to improve the attendance figure.

Attendance Matters

Every school day counts BUT every minute is equally important.

Attendance Matters



Every Day Counts....



Attendance Rewards

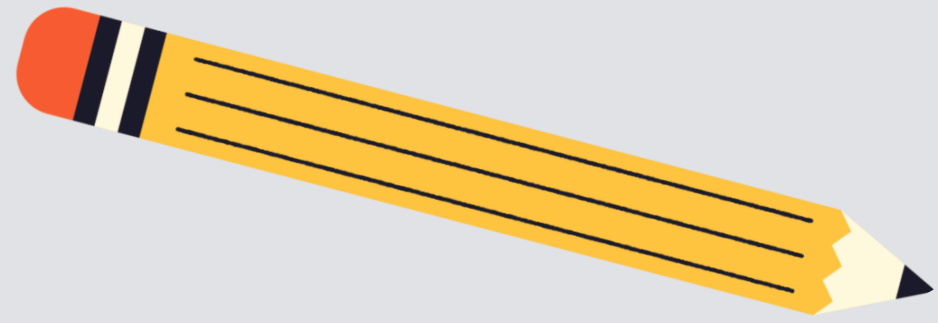
- Throughout the year we celebrate attendance successes whether that is excellent overall attendance or improved attendance!
- Attendance challenges will be set periodically as reminders for the children of how important good attendance is.
- Each week the class with the highest attendance percentage will earn extra playtime as a reward.
- At the end of the year those with attendance above 96%, as well as children who have 100% attendance for the year, will be celebrated.

**If you have any questions about your child's attendance,
please speak to Mrs Thomas or Miss Bishop.**

SATS

The Key Stage 2
assessments for Year 6
will take place:
Monday 11th May -
Thursday 14th May
2025.





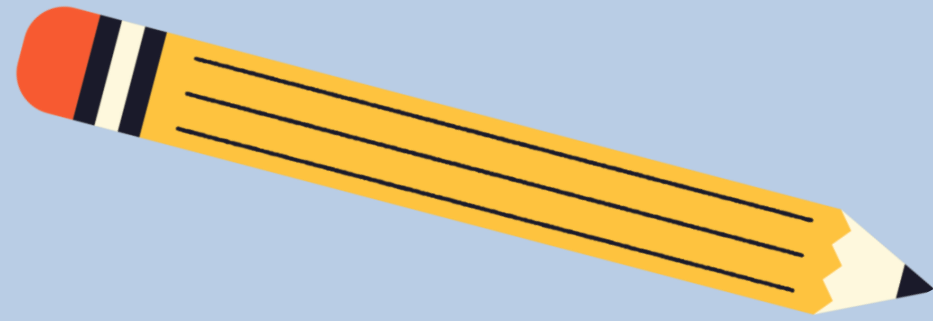
Homework Mats

The following are non-negotiables and are an expectation of all Year 6 pupils:

- Spellings will be tested on a **Friday**
- Daily reading (minimum of 3 per week)
- Homework will be set weekly using the CGP workbooks.

Please practise times tables regularly. TT Rockstars is available via the free app or online.





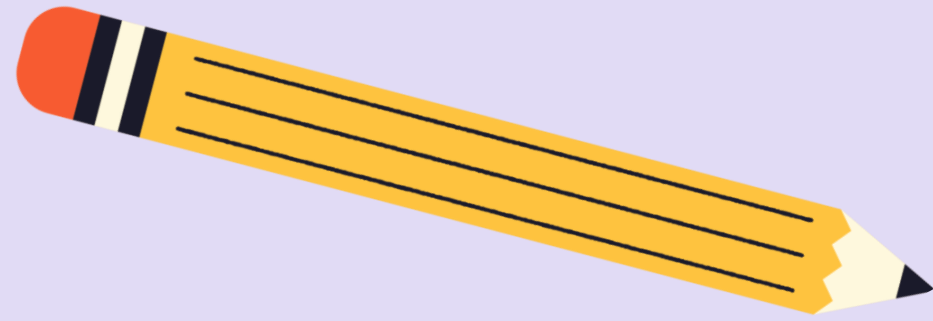
Reading

- Read at least three times a week. Reading records will be checked on a Friday. Logs must be signed by an adult. Reading records must be in school every day!
- If a reading record is lost, a replacement can be purchased from the school office for £1

**The more that you read,
the more things you will know.
The more that you learn,
the more places you'll go.**
-Dr. Seuss

Fluency, accuracy and
comprehension!

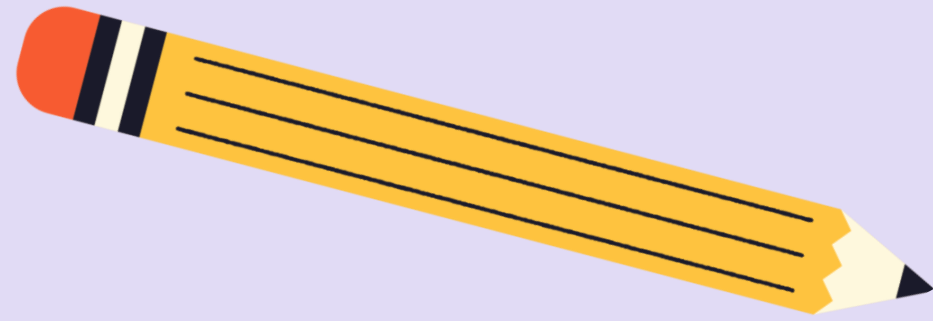




Spellings

- Spellings will be sent at the start of each half term and tested once a week (Friday).
- Common exception words will be worked on in school and test once per half term. A copy of these will also be sent home.





CGP Books!

- The children will have two books (English and maths) and will be expected to complete an activity from each book on a weekly basis.
- Please encourage your child to work as independently as possible. All tasks that are sent home will be linked to curriculum objectives covered that week or the previous week.
- If anyone is struggling with their homework, we are more than happy to support.





Class Dojo

- It is our main form of communication so please check regularly / enable notifications if needed.
- We celebrate the work of children / classes / school on Dojo so it is a brilliant way of finding out about your child's education.
- Teachers will check any messages whenever they can between the hours of 8 and 4 on weekdays and get back to you as soon as they can.
- It's great for quick questions.
- Pupil absence must be reported through the office.
- If you require a more detailed discussion, please feel free to request a phone call!





Class Dojo

Please use Dojo for...

- Checking regularly for updates and news on the main school page and on class pages - Ensure notifications are switched on if needed
- Making positive comments and celebrate JOY in school
- Sharing achievements from home
- Asking non-urgent questions
- Arranging a time for a meeting or phone call should it be required.

Please do not use Dojo for...

- Reporting absence to teachers - contact the office please
- Questions regarding school dinners - these should go via the office
- Complaints. Mr Thomson is always around and - should there be an issue - it is always better to chat than attempt to solve using a keyboard. If he is out, then a member of the Senior Leadership Team is always available.

Ensuring ALL children in our care reach their FULL potential is a TEAM effort. Positive relationships between home and school ensure our whole school community works together to create JOY in living and learning.

Handle with care



At St. John's, we are here for your child, for you and your family.

If your family is having a difficult time at home, we would like to provide additional support at school. We understand family situations can be sensitive; you do not need to share the details with us. After a difficult night, morning, or weekend, please just message your child's class teacher on dojo and say, "Handle with care."

We won't ask any other questions. But we will give your child the extra time, patience, help and care they might need that day. If you wish to talk through anything then we are always here - reach out to our pastoral team!

As always, we are a TEAM and we want to help your child thrive - always.



Likewise, the children also have their own way of communicating in the classroom too via, "I wish my teacher knew..."

Uniform

Boys

- Grey trousers or shorts
- White polo shirt
- Sweatshirt with school crest on
- Grey socks and black school shoes

Girls

Winter

- Grey skirt, pinafore dress or grey trousers
- White polo shirt
- School sweatshirt or cardigan with school crest
- White/ grey socks or grey tights and black shoes

Summer

- Red and white checked dress
- White socks and black shoes



PE

- Plain white T-Shirt
- Black shorts
- Pumps
- School Jumper is fine if cold outside
- Plain tracksuit or leggings (black) may be worn for outdoor lessons during winter.
- Earrings must be covered or taken out!

Swimming lessons will take place on a Thursday for approximately 10 weeks. A letter will be sent home prior to sessions starting.

Swimming caps can be purchased from the school office for £2.

Trainers may be brought into school to change into at lunchtime. If there is a problem with school shoes, trainers can be worn to school then change into PE pumps.

Please ensure children come to school in their PE kit on Wednesdays.

PLEASE ENSURE ALL UNIFORM AND LUNCHBOXES ARE CLEARLY LABELLED.

General Information & Reminders



- Children are encouraged to bring in water bottles and a piece of fruit for snack.
- School equipment is provided.
- Please call Mrs Bond in the school office before 9:30am if your child is ill.
- The gate will open at 8:40 ready for teachers to collect their class at 8:45. The register is taken at 9am. A late mark will be given after this time. Mrs Fitzsimons and the pastoral team will be part of the office in the mornings.
- Holidays - requests to Mr Thomson. These will be unauthorised absences unless there are exceptional circumstances.





General Information & Reminders

- We encourage the children to go to the toilet during break times, unless there are special/medical circumstances.
- Mobile phones are not encouraged. If it is absolutely necessary for your child to have one, it will be kept in the classroom basket for the duration of the school day. The children will sign their phones in and out school.

Medication

- Asthma inhalers - please ensure you send in an in-date inhaler, clearly labelled.
- Medication must be signed in before it can administered. This should be clearly labelled with name and year group.
- Any changes to permissions for media and local visits must be provided in writing. Please ensure these are updated for this academic year.





ICT and E-Safety


All children are taught E-Safety regularly throughout the year.

Please familiarise yourself with the Year 3 computer rules on the school website.

If you are concerned about anything ICT based, please see a member of staff at school.

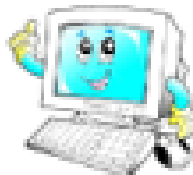






Year 6 Computer Rules

- I will look after all school IT equipment and use it properly.
- I will ask for permission before using the internet.
- I will keep any passwords secret and not share them with others.
- All of the messages I send on a computer will be polite.
- I will not open other people's files without permission.
- I will tell an adult if I see anything which upsets me.
- I will ask permission before I open files or links which 'pop up'.
- I understand that I must not give out any personal details, such as my name, address or phone number or arrange to meet anyone.
- I will only take a photograph or video of someone if they say it is alright.
- I will not bring mobile phones into school, without the permission of my teacher.
- I will not bring in disks, CD's or data storage devices from outside school and try to use them on the school computers without prior permission.
- I know that teachers can check my computer files and the internet sites I visit and that if they have any concerns about my safety they will contact my parent/carer.
- I understand that if I deliberately break these rules, I could be stopped from using the internet or computers.



Think Before You Click!

Pupil name.....

Signed.....

Useful Websites:

- <https://www.thinkuknow.co.uk/parents/>
- <https://www.nspcc.org.uk/preventing-abuse/keeping-children-safe/online-safety/>
- <http://www.safeguardingchildren.co.uk/parents-carers/e-safety-for-parents>
- <https://www.saferinternet.org.uk/advice-centre/parents-and-carers>
- <https://www.childnet.com/resources/know-it-all-for-parents>



Please be aware that we are a NUT FREE SCHOOL!

We have children and members of staff with **severe nut allergies** who have epi pens in school. It is as severe as if any nuts are in the air, it can cause a reaction.

Please check any packaging of snacks / pack lunch items are nut free.



Remember that Nutella contains nuts!



THANK YOU FOR COMING!

ANY QUESTIONS?

