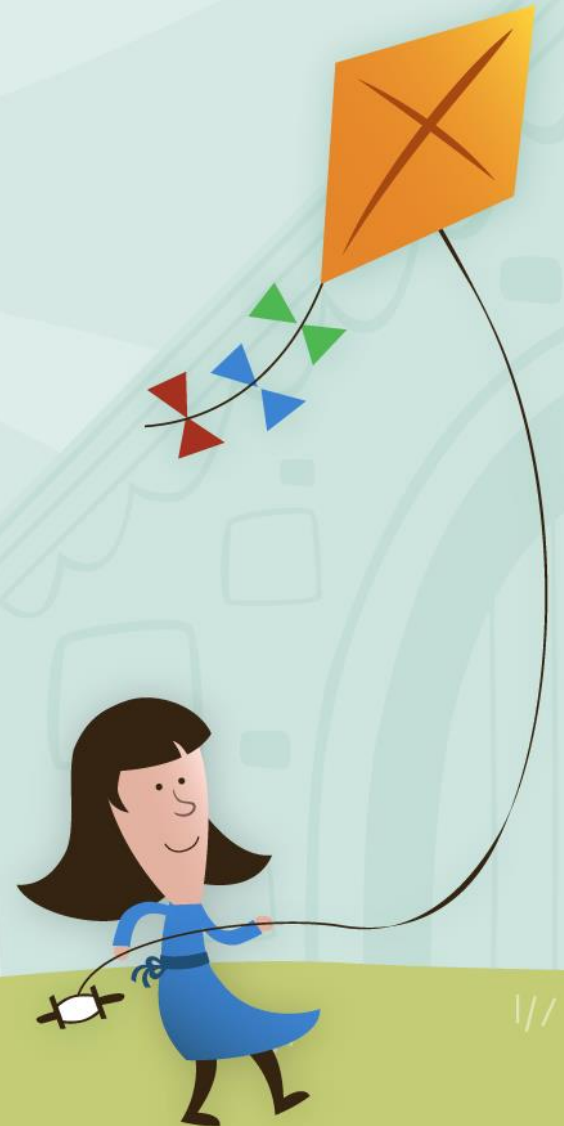
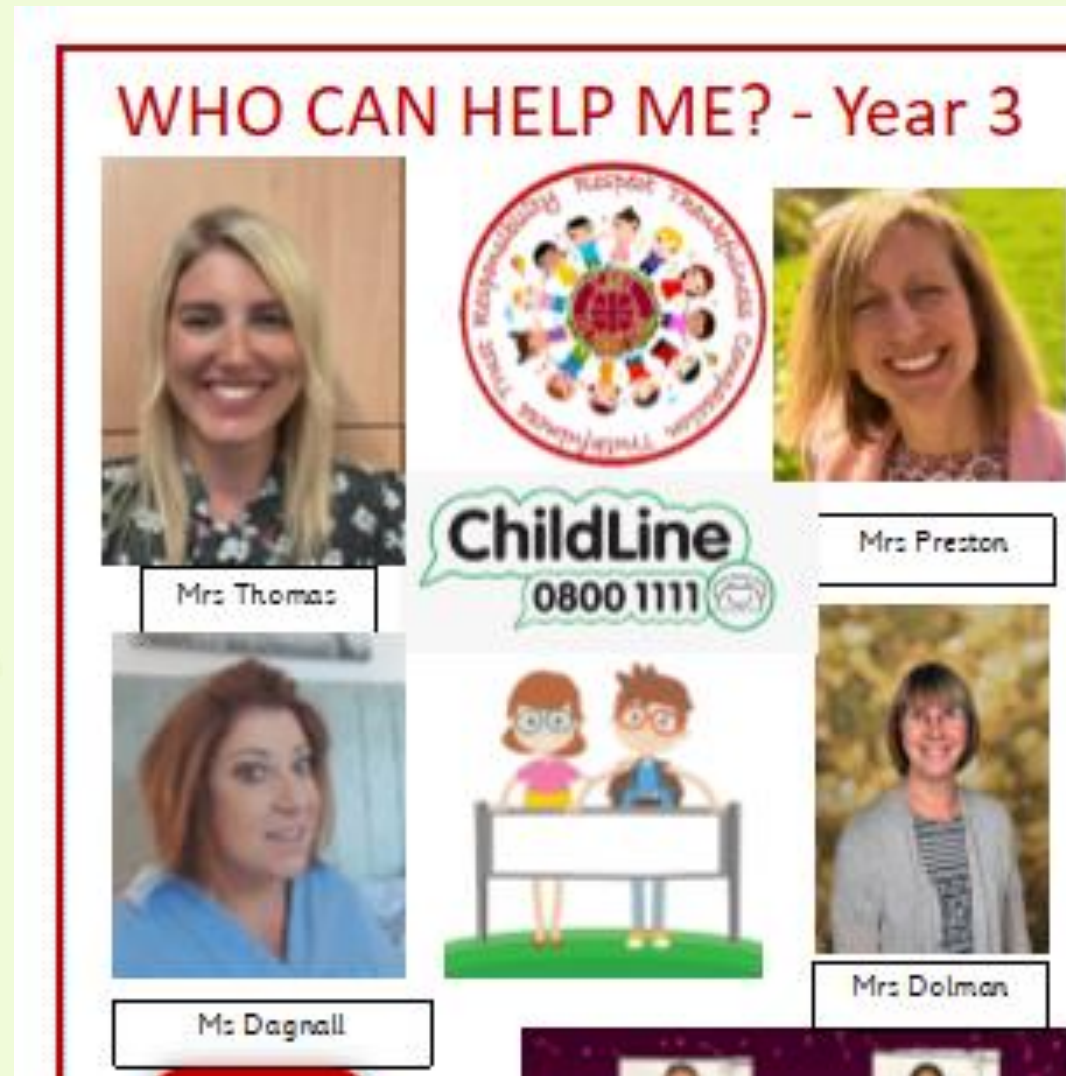


Welcome to Year 3!

Mrs Thomas
Mrs Preston
Ms Dagnall
Mrs Dolman



Y3 Staff



Values at St John's



At St. John's Church of England Primary School our Christian values are at the heart of everything we do. Our whole school community work together to create JOY in living and learning.

Our school values are:

- Respect
- Thankfulness
- Compassion
- Truthfulness
- Trust
- Responsibility



Values at St John's



Our school motto is:

‘The JOY of the Lord is Your Strength’ (Nehemiah 8:10)

JOY represents **JESUS, OTHERS, YOURSELF**

- Give your heart to **JESUS** and follow his example
 - Build positive relationships with **OTHERS**
- Be proud of **YOURSELF**



Curriculum

English – writing, reading,
SPAG (Spelling, Punctuation
and Grammar)

Maths

Science

History

Geography

Art and Design

Design and Technology

Music

PSHE

Physical Education

RE

French

Computing

You can see the Year 3
curriculum overview in detail
on the school website.



Year 3 End of Year Expectations

Mathematics

- Compare & order numbers up to 1000.
- Read & write all numbers to 1000 in digits and words.
- Find 10 or 100 more/less than a given number.
- Count from 0 in multiples of 4, 8, 50 and 100.
- Recall & use multiplication & division facts for 3, 4, 8 tables.
- Recognise place value of any 3-digit number.
- Add and subtract:
 - 3-digit nos and ones
 - 3-digit nos and tens
 - 3-digit nos and hundreds
- Add and subtract:
 - Numbers with up to 3-digits using written columnar method.
- Estimate and use inverse to check.
- Multiply:
 - 2-digit by 1-digit
- Count up/down in tenths.
- Compare and order fractions with same denominator.
- Add and subtract fractions with same denominator with whole.
- Tell time using 12 and 24 hour clocks; and using Roman numerals.
- Tell time to nearest minute.
- Know number of days in each month and number of seconds in a minute.



Reading

- Comment on the way characters relate to one another.
- Know which words are essential in a sentence to retain meaning.
- Draw inferences such as inferring characters' feelings, thoughts and motives from their actions.
- Recognise how commas are used to give more meaning.
- Recognise inverted commas
- Recognise:
 - plurals
 - pronouns and how used
 - collective nouns
 - adverbs
- Explain the difference that the precise choice of adjectives and verbs make.



Writing

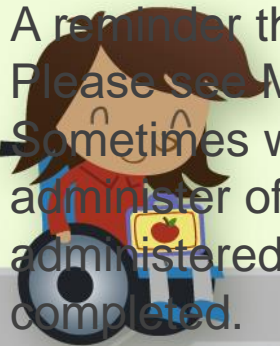
- Use conjunctions (when, so, before, after, while, because).
- Use adverbs (e.g. then, next, soon).
- Use prepositions (e.g. before, after, during, in, because of).
- Experiment with adjectives to create impact.
- Correctly use verbs in 1st, 2nd and 3rd person.
- Use perfect form of verbs to mark relationships of time and cause.
- Use inverted commas to punctuate direct speech.
- Group ideas into basic paragraphs.
- Write under headings and sub-headings.
- Write with increasing legibility, consistency and fluency.





Attendance

- Good attendance and punctuality are vital as it not only impacts academic progress but also your child's general wellbeing.
- Each child has a legal entitlement to attend school regularly.
- We continually monitor attendance and punctuality in our school and want to make sure that parents are well informed if there are concerns.
- We have updated our attendance and punctuality policy this year which will be shared with parents in the next few weeks.
- Summary:
 - 96% and above = good attendance. As a school we would like all children's attendance to be 96% or above.
 - 90-95% = Class Dojo message and support offered. An attendance support plan may be necessary.
 - Below 90% is classed as persistent absence and an attendance support plan will be in place to help improve attendance. Sefton request names and details of children whose attendance falls below 90% and may take action accordingly
- A reminder that holidays in term time will not be authorised, unless there are exceptional circumstances.
- Please see Mrs Thomas or Mr Thomson with any queries about your child's attendance.
- Sometimes we all feel a little under the weather but need to carry on with work or education. At school we can administer off the shelf medicines, such as Calpol, with permission from parents. Antibiotics can also be administered by school staff if needed; please bring these medications to the office where a form will need to be completed.



Home Learning

The following are non-negotiables and are an expectation of all Year 3 pupils:

- Homework mats will be given out half-termly. At least two activities must be completed in this time frame.
- Spellings will be tested on a **Thursday**.
- Children are expected to read at least three times a week. Reading records need to be in school every day but they will only be checked on a **Thursday**. Logs must be signed by an adult, children will be asked to stay in class on a Friday if they have not read during the week to practise their reading.
- Please practise times tables regularly. We will post details on Dojo with how to download the app and log in information.



Spellings

All children will be taught spellings according to their stage of development. Some children may receive different spellings dependent on their individual needs

These will be taught in school but it would be beneficial if they could be practised at home. They will be sent home half termly and are available online.



Reading

**The more that you read,
the more things you will know.
The more that you learn,
the more places you'll go.**
-Dr. Seuss

Three key areas: fluency, accuracy and comprehension.

These skills are taught in school but need to be reinforced at home.

Fluency and accuracy – regular (daily) practise and correction.

Comprehension – questioning your child about their understanding of the text.

If your child loses their reading record, a new one can be purchased from the office for £1.



ICT and E-Safety

All children are taught E-Safety regularly throughout the year.

Please familiarise yourself with the Year 3 computer rules on the school website.

If you are concerned about anything ICT based, please see a member of staff at school.

Useful Websites:

- <https://www.thinkuknow.co.uk/parents/>
- <https://www.nspcc.org.uk/preventing-abuse/keeping-children-safe/online-safety/>
- <http://www.safeguardingchildren.co.uk/parents-carers/e-safety-for-parents>
- <https://www.saferinternet.org.uk/advice-centre/parents-and-carers>
- <https://www.childnet.com/resources/know-it-all-for-parents>





Class Dojo

- It is our main form of communication so please check regularly / enable notifications if needed.
- Please contact **Mrs Thomas** with any class queries.
- We celebrate the work of children / classes / school on Dojo so it is a brilliant way of finding out about your child's education.
- Teachers will check any messages whenever they can between the hours of 8 and 4 on weekdays and get back to you as soon as they can. No replies will be sent at the weekend.
- It's great for quick questions / notify us of pupil absence but if you require a more detailed discussion, please feel free to give us a ring (or request a call through Dojo)



Rewards and Sanctions

- Team points, golden tickets, golden time, verbal praise.
- Rewards for completion of home learning tasks
- A copy of our Behaviour Policy is on the website.



Uniform

Trainers may be brought into school to change into at lunchtime. If there is a problem with schools shoes, trainers can be worn to school then change into PE pumps.



Boys

- Grey trousers or shorts
- White polo shirt
- Sweatshirt with school crest on
- Grey socks and black school shoes (not black trainers)

Girls

Winter

- Grey skirt, pinafore dress or grey trousers
- White polo shirt
- School sweatshirt or cardigan with school crest
- White/ grey socks or grey tights and black shoes

Summer

- Red and white checked dress
- White socks and black shoes



PLEASE ENSURE ALL UNIFORM AND LUNCHBOXES ARE CLEARLY LABELLED.



PE

- Plain white T-Shirt
- Black shorts
- Pumps
- School Jumper is fine if cold outside

Plain tracksuit or leggings (black) may be worn for outdoor lessons during winter.

Swimming lessons will begin on a Thursday for approximately 10 weeks in the summer term. A letter will be sent home prior to sessions starting.

Swimming caps can be purchased from the school office for £2.

Advanced warning:

Girls- One piece swimming costume

Boys- Fitted trunks. They must not be loose fitting.



Please ensure your child comes into school in their PE kit on a **THURSDAY**.



General Information & Reminders

- No eccentric hair styles/hair accessories/jewellery. No earrings for swimming – please provide plasters if these cannot be removed.
- Children are encouraged to bring in water bottles and a piece of fruit for snack.
- School equipment is provided.
- Please call Mrs Bond in the school office before 9:30am if your child is ill.
- The gate will open at 8:40 ready for teachers to collect their class at 8:45. The register is taken at 9am. A late mark will be given after this time.
- Holidays – requests to Mr Thomson. These will be unauthorised absences unless there are exceptional circumstances.
 - Mobile phones are not encouraged. If it is absolutely necessary for your child to have one, it will be kept in the office for the duration of the school day.



General Information & Reminders cont.

- Asthma inhalers – please ensure you send in an in-date inhaler, clearly labelled.
- Medication must be signed in before it can administered. This should be clearly labelled with name and year group.
- Class Dojo is our main method of communication. Please check in regularly for important updates and news. You can also send in messages/photos to share your child's achievements.
- Any changes to permissions for media and local visits must be provided in writing. Please ensure these are updated for this academic year.



How can I support my child?

Websites	Apps
<ul style="list-style-type: none">• BBC Bitesize• Top Marks – Hit the Button is particularly good for times tables!• www.spellingframe.co.uk• www.sumdog.co.uk (Maths)• www.onceuponapicture.co.uk (comprehension)• www.primarygamesarena.com• www.gridclub.com• NRICH (Maths)	<ul style="list-style-type: none">• Spelling Shed (£2.99)• 10 minutes a day times tables• A+ Spelling• Word Beach: Fun Spelling Games• Hit the Button• TT Rockstars



PLEASE NOTE: It is NOT an expectation for your child to complete additional work at home other than set homework, reading and spellings. Your child will be appropriately challenged/supported at school. This will be discussed at parents' evening or feel free to arrange a meeting with me to discuss your child's individual needs.





50 things to do before you're 11

<https://www.nationaltrust.org.uk/features/50-things-to-do-before-youre-11-activity-list>