



St John Fisher Catholic Primary School

"Growing through God, we learn, laugh and love"

Newsletter 16th January 2026



## Year 4 Art Club



PIC•COLLAGE



# Year 4

Year 4 have been learning about Rosh Hashanah (the celebration of the New Year in Judaism which falls in Autumn). They shared pomegranates and talked about making a fresh start and reflected on how they can grow in the year ahead.

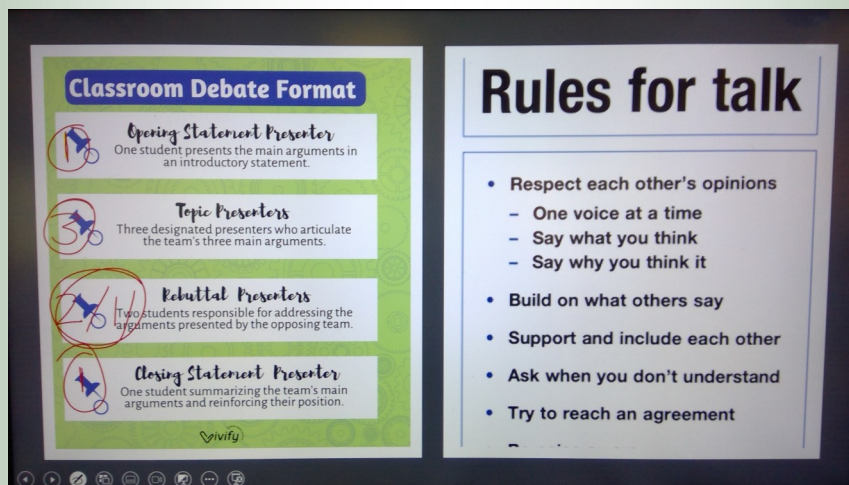




# Year 6 Writing and Oracy

Year 6's English lesson used a debate to launch our *Selfish Giant* writing unit. The children explored **different points of view**, listened carefully to others, and **expressed their ideas clearly and respectfully**.

This wasn't about winning an argument – it was about developing **oracy skills**: explaining opinions, justifying ideas, and responding thoughtfully. A powerful way to deepen understanding before writing.

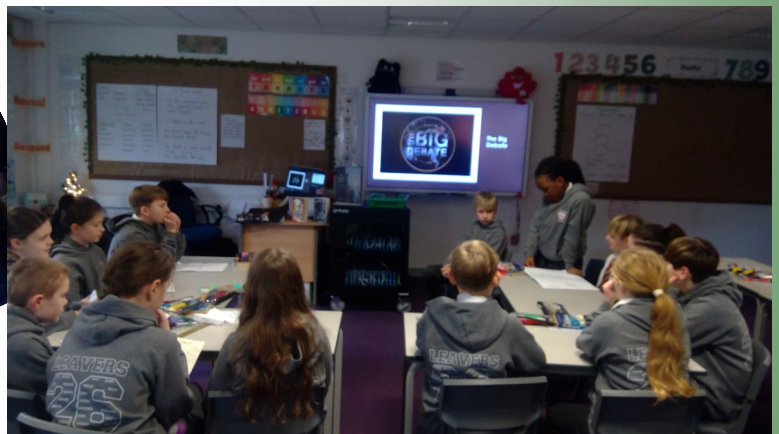


**Classroom Debate Format**

- Opening Statement Presenter**  
One student presents the main arguments in an introductory statement.
- Topic Presenters**  
Three designated presenters who articulate the team's three main arguments.
- Rebuttal Presenters**  
Two students responsible for addressing the arguments presented by the opposing team.
- Closing Statement Presenter**  
One student summarizing the team's main arguments and reinforcing their position.

**Rules for talk**

- Respect each other's opinions
  - One voice at a time
  - Say what you think
  - Say why you think it
- Build on what others say
- Support and include each other
- Ask when you don't understand
- Try to reach an agreement



# Lost & Found



Dolce are increasing their meal prices in April to £3.12 per meal.



<https://www.paperturn-view.com/wednesday-word/good-news?pid=MTA101634&v=163.4>



# Attendance Matters – Every Day Counts!



## Why Attendance Matters

- **Good Attendance** = Better Learning + Wellbeing + Safeguarding
- Every day in school matters; small amounts of absence add up.
- DfE expects schools to monitor attendance & support families early.

## Parent Notifications via School Spider

### Stay Informed at Key Attendance Levels

**Below 96%**  
(School Target)

- ✓ Parents Notified
- ✓ Attendance Monitored

**93% & Below**  
(Approaching Persistent Absence)

- ⚠ Initial Notification
- 🕒 Monitored Weekly + Fortnightly Updates

**90% & Below**  
(Persistent Absence)

- ⚠ Initial Notification
- 🕒 Monitored Daily + Weekly Updates

## Working Together for Success

- **Early Support** to Overcome Barriers
- Helping Every Child Attend & Achieve



**Check the School Spider App Regularly!**

## Need Support?

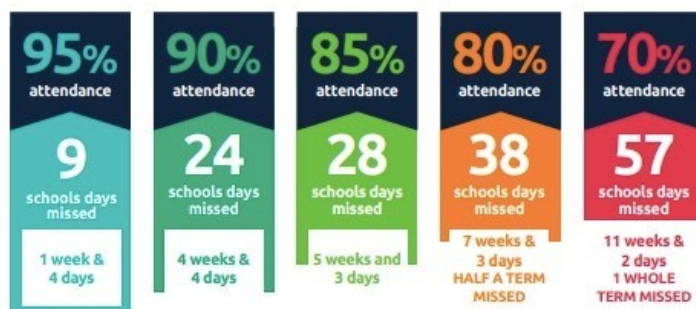
- Concerns about illness, transport, or other issues?

**Contact the School – We're Here to Help!**



**MOMENTS  
MATTER,  
ATTENDANCE  
COUNTS.**

## Every day in school counts...



## and every minute counts...



## St. John Fisher Primary - Attendance 12th Jan 2026 – 16th Jan 2026

Year Group	Present Marks (%)	Late Marks	Weekly Ranking
Year R	82.9%	0	
Year Y1	98.3%	2	2nd
Year Y2	98.2%	5	3rd
Year Y3	96.7%	2	
Year Y4	95.7%	4	
Year Y5	99.4%	7	1st
Year Y6	95.3%	2	



**Congratulations to the following  
Children who have been awarded our  
Smile, Dojo and Superstar awards  
this week.**





## **JANUARY**

Thurs 22nd—Wicked World Wide Sing A Long—Choir

## **FEBRUARY**

Wed 4th—Paul Delaney Poetry Buzz

Fri 6th—Young Voices—Manchester—Choir

Wed 11th—Parents Evening

Thurs 12th—Parents Evening (afternoon)

Tues 24th—Year 6 Lowe House Retreat

**SCHOOL CLOSURES ON FRIDAY 13TH AT NORMAL TIME  
AND REOPENS ON  
MONDAY 23RD FEBRUARY**

## **MARCH**

Thurs 5th— World Book Day

Fri 13th —Jungle Book Theatrical Production

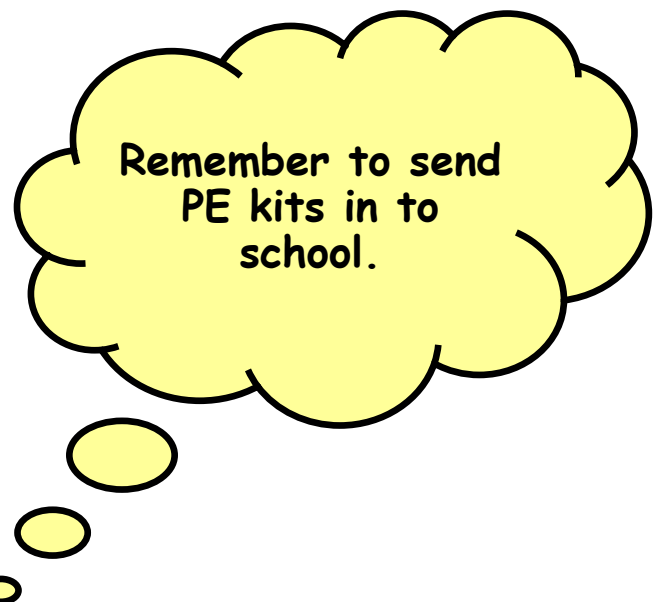
Wed 18th—P&P Spring Concert

Tues 24th—KS2 Stations of the Cross

Thurs 26th—Easter Bingo

**SCHOOL CLOSURES ON FRIDAY 27TH MARCH AT 1.30PM AND  
REOPENS ON  
MONDAY 13TH APRIL  
EXTRA CLUB WILL BE OPEN ON THE LAST DAY UNTIL  
4PM.**





# HOW TO CONTACT US

We have an open door policy at our school and you can talk to anyone about any issues you have but we want to ensure that you speak to the right person to resolve the issues at first contact.

For issues relating to your child's learning or welfare please contact your class teacher first. Face to Face at the end of the day is best but we understand that this isn't always possible or that you may have issues that you don't want to discuss in front of the children or other parents.

You can email them with your concerns or ask them to call you or arrange a convenient time to come in.

CLASS	TEACHER	EMAIL
Reception	Mr McCulloch	Senco.stjohnfisher@haltonlearning.net
Year 1	Miss Whitley	Emily.whitley@SJFPRIMARY.CO.UK
Year 2	Mrs Case	case@SJFPRIMARY.CO.UK
Year 3	Mr Redmond	redmond@SJFPRIMARY.CO.UK
Year 4	Miss Sweeney	sweeney@SJFPRIMARY.CO.UK
Year 5	Mrs Highcock	highcock@SJFPRIMARY.CO.UK
Year 6	Mrs Callender	callender@SJFPRIMARY.CO.UK

For Pastoral or Safeguarding concerns please contact Mrs. Smith via the school office number or by email.

Pastoral.stjohnfisher@haltonlearning.net

For all general enquiries, payments, trips, medicines and to advise of early pickups for appointments etc please contact the Office as normal on 0151 424 7794.

As always Mrs. Dickinson and Mrs. Harrison are always available.

We hope this process will make it easier for you.





**St John Fisher— on Instagram**  
**stjohnfisherwidnescps**

---

8.40am Gates Open

KS1 use the Reception wooden gate and KS2 use the large green gate.

8.45am Bell rings and children line up.

8.50am School day starts, anyone in after this will get a late mark.

3.05pm GATES OPEN

3.15pm School day ends

---

**ALLERGIES**

Our kitchen is nut free—we would ask that you do not send products containing nuts in to school in lunch boxes or snacks. Thank you for the support with this as it will limit the risk for our children with nut allergies.

---

**PARKING AROUND THE SCHOOL AT DROP OFF AND  
COLLECTION**

Can we please ask that you do not park or manoeuvre outside the gates when dropping off/collecting. As you can appreciate the school is situated in a side road which makes parking difficult so we would ask that you park elsewhere rather than risk manoeuvring on Edward Street.

We understand that you are all busy and have places to go of a morning and evening but please let's not wait for a child to be hurt.