



St John Fisher Catholic Primary School

"Growing through God, we learn, laugh and love"

Newsletter 9th January 2026



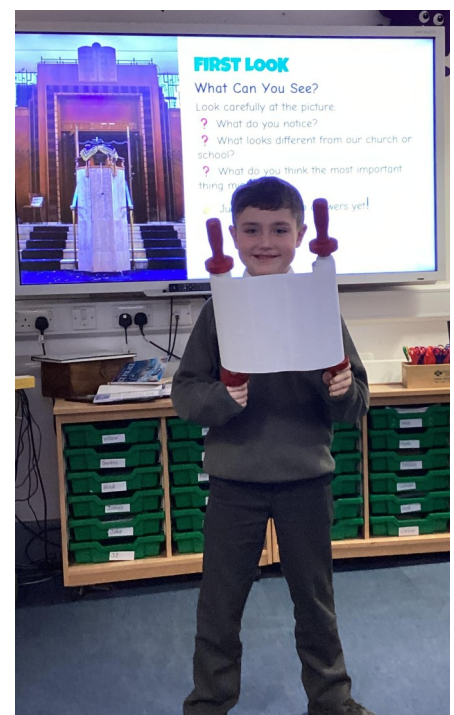
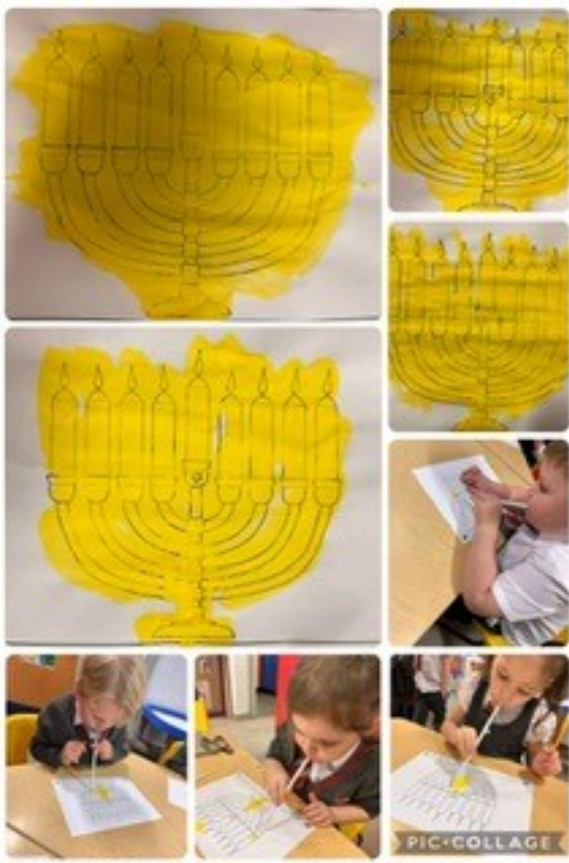
Welcome back, we hope you all enjoyed the break .
We want to wish our children and families a
happy and blessed 2026.

As we head into 2026 there are lots of exciting school events
and trips to look forward to.

2026 will be an educational and fun filled
learning experience for our children.

Judaism

This week we have been learning about Judaism. We had a great week looking at the artefacts and the children have been learning about other faiths to deepen their understanding, respect, and compassion for others and to value the diversity of God's world.



****NEW - Attendance Monitoring System****

Attendance Matters – Every Day Counts!

Regular school attendance is essential for children's **learning, wellbeing, and safeguarding**. Even small amounts of absence can add up and affect progress.

To support families and meet DfE expectations, we are introducing an updated **attendance monitoring system**. Parents will receive notifications via the **School Spider app** when attendance reaches key levels:

Attendance Notifications

- **Below 96%** (school target) Parents notified and attendance monitored.
- **93% and below** (approaching persistent absence) Initial notification sent; attendance monitored weekly with fortnightly updates if needed.
- **90% and below** (persistent absence) Initial notification sent; attendance monitored daily with weekly progress updates.

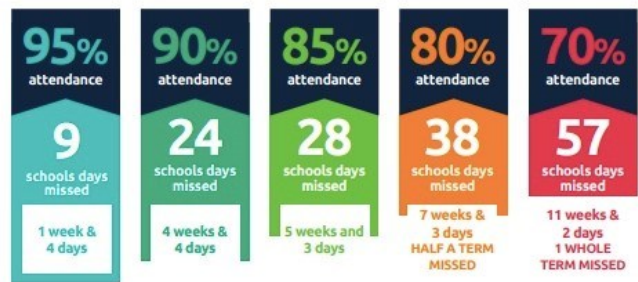
Working Together

These notifications help us work with families **early** to address any barriers to attendance and support every child's success.

Please check the **School Spider app regularly**.
If you need support with attendance, contact the school —
we are here to help.

**MOMENTS
MATTER,
ATTENDANCE
COUNTS.**

Every day in school counts...



and every minute counts...



St. John Fisher Primary - Attendance 5th Jan 2026 — 9th Jan 2026

Year Group	Present Marks (%)	Late Marks	Weekly Ranking
Year R	92.1%	3	
Year Y1	95.5%	7	2
Year Y2	88.9%	11	
Year Y3	92.0%	5	
Year Y4	95.7%	6	1
Year Y5	92.9%	15	
Year Y6	95.3%	14	3

**Congratulations to the following
Children who have been awarded our
Smile, Dojo and Superstar awards
this week.**





JANUARY

Thurs 15th—School Census Day.

Thurs 22nd—Wicked World Wide Sing A Long—Choir

FEBRUARY

Wed 4th—Paul Delaney Poetry Buzz

Fri 6th—Young Voices—Manchester—Choir

Wed 11th—Parents Evening

Thurs 12th—Parents Evening (afternoon)

Tues 24th—Year 6 Lowe House Retreat

**SCHOOL CLOSURES ON FRIDAY 13TH AT NORMAL TIME
AND REOPENS ON
MONDAY 23RD FEBRUARY**

MARCH

Thurs 5th— World Book Day

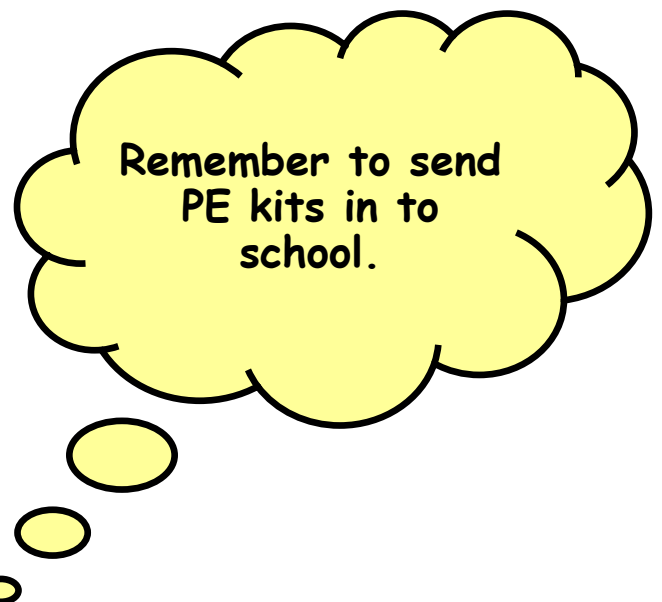
Fri 13th —Jungle Book Theatrical Production

Wed 18th—P&P Spring Concert

Tues 24th—KS2 Stations of the Cross

Thurs 26th—Easter Bingo

**SCHOOL CLOSURES ON FRIDAY 27TH MARCH AT 1.30PM AND
REOPENS ON
MONDAY 13TH APRIL
EXTRA CLUB WILL BE OPEN ON THE LAST DAY UNTIL
4PM.**



HOW TO CONTACT US

We have an open door policy at our school and you can talk to anyone about any issues you have but we want to ensure that you speak to the right person to resolve the issues at first contact.

For issues relating to your child's learning or welfare please contact your class teacher first. Face to Face at the end of the day is best but we understand that this isn't always possible or that you may have issues that you don't want to discuss in front of the children or other parents.

You can email them with your concerns or ask them to call you or arrange a convenient time to come in.

CLASS	TEACHER	EMAIL
Reception	Mr McCulloch	Senco.stjohnfisher@haltonlearning.net
Year 1	Miss Whitley	Emily.whitley@SJFPRIMARY.CO.UK
Year 2	Mrs Case	case@SJFPRIMARY.CO.UK
Year 3	Mr Redmond	redmond@SJFPRIMARY.CO.UK
Year 4	Miss Sweeney	sweeney@SJFPRIMARY.CO.UK
Year 5	Mrs Highcock	highcock@SJFPRIMARY.CO.UK
Year 6	Mrs Callender	callender@SJFPRIMARY.CO.UK

For Pastoral or Safeguarding concerns please contact Mrs. Smith via the school office number or by email.

Pastoral.stjohnfisher@haltonlearning.net

For all general enquiries, payments, trips, medicines and to advise of early pickups for appointments etc please contact the Office as normal on 0151 424 7794.

As always Mrs. Dickinson and Mrs. Harrison are always available.

We hope this process will make it easier for you.



GIRLS TEAM NEWS



U11 Reds Girls year 6 (and 5) want new players!

We are looking for new players to join a super u11 girls' team – lots of fun and make new friends!

No experience is necessary, please contact Julie for more info 07734250933

Currently training Fridays 530 at Upton Community Centre



#THISGIRLCAN

**MATT FIDDES
MARTIAL ARTS**




NEW YEAR NEW YOU

COMMUNITY VOUCHER

**STUDENTS CAN REDEEM 50% OFF YOUR
ENROLMENT FEE AND A FREE UNIFORM WITH
THIS NEW YEAR VOUCHER!**


**RESPECT | DISCIPLINE | CONFIDENCE | SELF DEFENCE
IMPROVE SCHOOL GRADES | SOCIAL AWARENESS**



**BRAND NEW CLASSES
STARTING THIS
JANUARY IN WIDNES:**

**FARNWORTH PRIMARY SCHOOL,
WIDNES**

TO REDEEM THIS OFFER, SCAN THE QR CODE ABOVE, OR VISIT
WWW.MATTFIDDES.COM. AND BOOK ONTO A CLASS IN YOUR LOCAL AREA.
PLEASE MAKE SURE TO BRING THIS VOUCHER TO YOUR FIRST CLASS.
(THIS OFFER IS ONLY VALID FOR NON-MATT FIDDES MARTIAL ARTS STUDENTS).



SCAN ME



St John Fisher— on Instagram
stjohnfisherwidnescps



<https://www.paperturn-view.com/wednesday-word/good-news?>

8.40am Gates Open

KS1 use the Reception wooden gate and KS2 use the large green gate.

8.45am Bell rings and children line up.

8.50am School day starts, anyone in after this will get a late mark.

3.05pm GATES OPEN

3.15pm School day ends

ALLERGIES

Our kitchen is nut free—we would ask that you do not send products containing nuts in to school in lunch boxes or snacks. Thank you for the support with this as it will limit the risk for our children with nut allergies.

PARKING AROUND THE SCHOOL AT DROP OFF AND COLLECTION

Can we please ask that you do not park or manoeuvre outside the gates when dropping off/collecting. As you can appreciate the school is situated in a side road which makes parking difficult so we would ask that you park elsewhere rather than risk manoeuvring on Edward Street. We understand that you are all busy and have places to go of a morning and evening but please lets not wait for a child to be hurt.