



St John Fisher Catholic Primary School

"Growing through God, we learn, laugh and love"

Newsletter 12th December 2025

PEACE & JOY  
at

CHRISTMAS



KEEP CHRIST IN  
CHRISTMAS

© Knights of St. Columba, Province 21.

1 Albert Street, Burnley, BB11 3BY

*Second Week of Advent*



# Christmas Nativity Years 2 & 3

On Tuesday 9<sup>th</sup> December years 2 and 3 performed their Christmas Nativity “Angel Express”. Fabulous storytelling and amazing singing—well done everyone.





# Christmas Nativity Reception & Year 1

On Thursday 11th December Reception and Year 1 performed their Nativity



# Year 4/5/6 Carol Concert

On Wednesday 10th December Years 4, 5 & 6 held their Carol Concert at St. John Fisher Church.

It was a beautiful evening of carols and readings.

Well done to all our children.



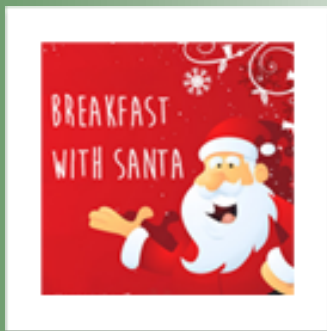


# Santa Dash

The children had lots of fun during the Santa Dash—keeping fit in their Santa hats whilst listening to Christmas songs.







## Breakfast with Santa

**Tuesday 16<sup>th</sup>**—Breakfast with Santa. Children will come into school as normal and breakfast will be in class and Santa will visit with sweets. Letters will be going home soon -If you would like your child to have breakfast please return the slip and £2.



## Christmas Dinner & Jumper Day

**Wednesday 17<sup>th</sup>** - Christmas Dinner and Christmas Jumper Day. Children are come to school in their uniform but can wear a Christmas jumper instead of their school jumper if they wish to. Please book lunch via School Grid if you want them to have a Christmas Dinner. If they are packed lunch, feel free to add something festive.

Year 5 will also be going to P&P to watch a performance of Xanadu.

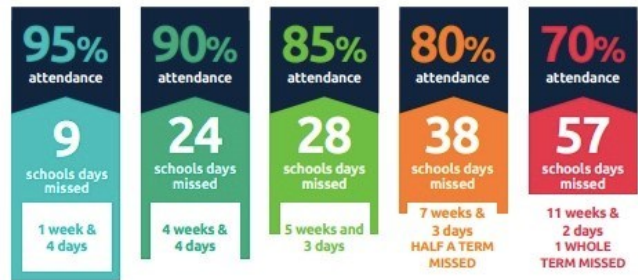


## Christmas Film Day

**Thursday 18<sup>th</sup>** - Party Clothes and Christmas film day. Children can wear their own clothes as we have a fun filled day.

**MOMENTS  
MATTER,  
ATTENDANCE  
COUNTS.**

## Every day in school counts...



## and every minute counts...



## St. John Fisher Primary - Attendance 8th Dec 2025— 12th Dec 2025

Year Group	Present (%)	Late Marks	Weekly Ranking
Year R	93.6%	6	
Year Y1	84.1%	11	
Year Y2	91.4%	4	
Year Y3	96.7%	8	1ST
Year Y4	96.4%	2	2ND
Year Y5	95.8%	11	3RD
Year Y6	95.3%	8	



**Congratulations to the following Children who have been awarded our Smile, Dojo and Superstar awards.**





# HOW TO CONTACT US

We have an open door policy at our school and you can talk to anyone about any issues you have but we want to ensure that you speak to the right person to resolve the issues at first contact.

For issues relating to your child's learning or welfare please contact your class teacher first. Face to Face at the end of the day is best but we understand that this isn't always possible or that you may have issues that you don't want to discuss in front of the children or other parents.

You can email them with your concerns or ask them to call you or arrange a convenient time to come in.

CLASS	TEACHER	EMAIL
Reception	Mr McCulloch	Senco.stjohnfisher@haltonlearning.net
Year 1	Miss Whitley	Emily.whitley@SJFPRIMARY.CO.UK
Year 2	Mrs Case	case@SJFPRIMARY.CO.UK
Year 3	Mr Redmond	redmond@SJFPRIMARY.CO.UK
Year 4	Miss Sweeney	sweeney@SJFPRIMARY.CO.UK
Year 5	Mrs Highcock	highcock@SJFPRIMARY.CO.UK
Year 6	Mrs Callender	callender@SJFPRIMARY.CO.UK

For Pastoral or Safeguarding concerns please contact Mrs. Smith via the school office number or by email.

Pastoral.stjohnfisher@haltonlearning.net

For all general enquiries, payments, trips, medicines and to advise of early pickups for appointments etc please contact the Office as normal on 0151 424 7794.

As always Mrs. Dickinson and Mrs. Harrison are always available.

We hope this process will make it easier for you.

For  
Your  
Information

**St John Fisher— on Instagram**  
**stjohnfisherwidnescps**



<https://www.paperturn-view.com/wednesday-word/holiday->

8.40am Gates Open

KS1 use the Reception wooden gate and KS2 use the large green gate.

8.45am Bell rings and children line up.

**8.50am School day starts, anyone in after this will get a late mark.**

3.05pm GATES OPEN

3.15pm School day ends

### **ALLERGIES**

Our kitchen is nut free—we would ask that you do not send products containing nuts in to school in lunch boxes or snacks. Thank you for the support with this as it will limit the risk for our children with nut allergies.

### **PARKING AROUND THE SCHOOL AT DROP OFF AND COLLECTION**

Can we please ask that you do not park or manoeuvre outside the gates when dropping off/collecting. As you can appreciate the school is situated in a side road which makes parking difficult so we would ask that you park elsewhere rather than risk manoeuvring on Edward Street.

We understand that you are all busy and have places to go of a morning and evening but please lets not wait for a child to be hurt.