



St John Fisher Catholic Primary School

"Growing through God, we learn, laugh and love"

Newsletter 28th November 2025

SKIP2BFIT

On Tuesday 25th November 2025 everyone joined in with the Skip2bFit challenge where they had to skip as many times as they could in 2 minutes and then try and beat their personal best. Well done to everyone and a special congratulations to our class champions.



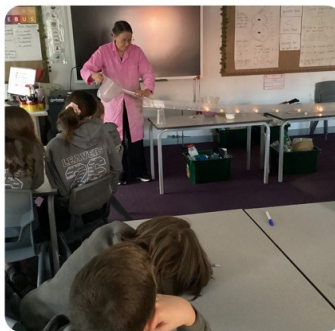
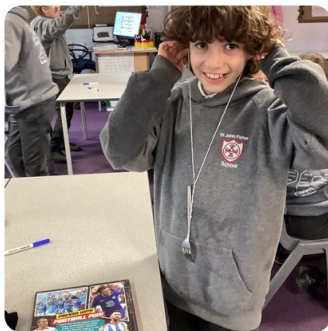
The children loved learning to skip and we have invested in a kit for school. We also have the Skip2BFit ropes for sale for £9 for the children to use at home.

These can be purchased from the Office.

Year 6

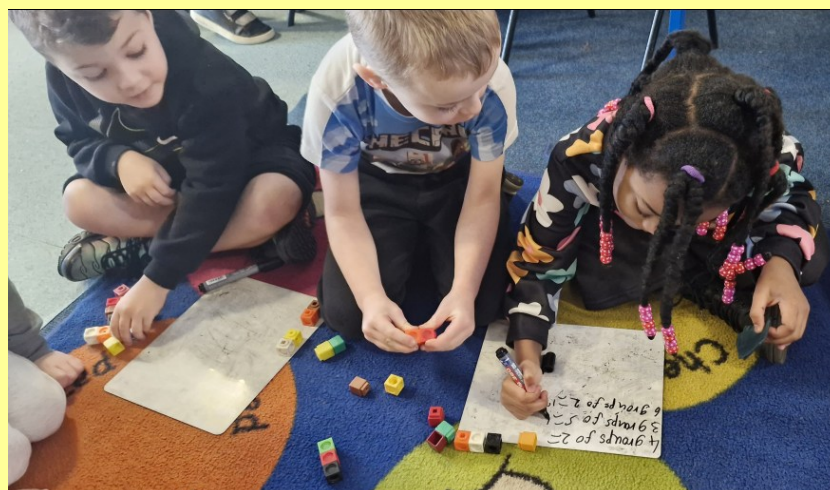
Chemistry with Cabbage

On Monday, year 6 took part in a Chemistry with Cabbage day. The children began with a single piece of red cabbage and used it to produce their own indicator. They then used the indicator to test household items such as soap, lemon and washing conditioner to see whether they were an acid or alkali. Afterwards, they were taught how to turn an acid to an alkali and an alkali to an acid. The children had lots of fun investigating and learned so much with lots of hands on activities.



Year 2

Year 2 have been busy learning their 2 times tables this week. Lots of fun working together to make groups.





Reverse Advent Calendar

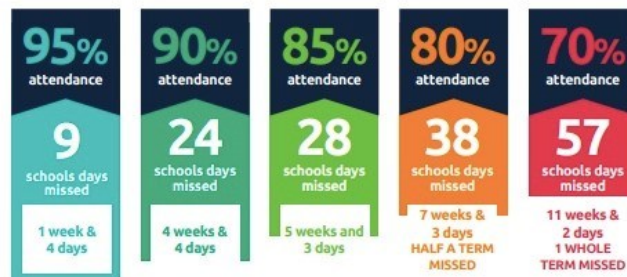
Lists are in class windows so you know what day is your day to donate.



Thursday 4th December
Doors open at 5pm

**MOMENTS
MATTER,
ATTENDANCE
COUNTS.**

Every day in school counts...



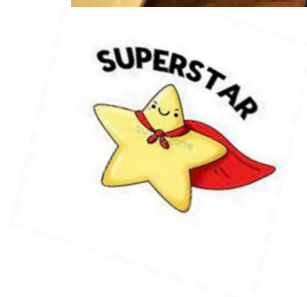
and every minute counts...



St. John Fisher Primary - Attendance 24 Nov 2025—28 Nov 2025

Year Group	Present (%)	Late Marks	Weekly Ranking
Year R	90.4%	1	
Year Y1	98.6%	5	1st
Year Y2	91.1%	8	
Year Y3	92.7%	5	
Year Y4	93.9%	10	3rd
Year Y5	94.5%	10	2nd
Year Y6	93.3%	5	

Congratulations to the following Children who have been awarded our Smile, Dojo and Superstar awards.



Dates for your



DECEMBER

4TH—CHRISTMAS BINGO

5TH— REC/1/2 HEARTS PANTO TRIP

8TH— Y3 AND 4—PLANET ICE PANTO

8TH—YEAR 5 FIRE SERVICE VISIT

9TH—YEAR 2 AND 3 NATIVITY

10TH— KS2 CAROLS AT CHURCH 6PM

11TH—RECEPTION AND YEAR 1 NATIVITY

12TH—SANTA DASH

16TH YEAR 6 FLU MOP UP

16TH—BREAKFAST WITH SANTA

17TH—CHRISTMAS DINNER AND JUMPER DAY

17TH—YEAR 5—XANADU AT P&P

18TH— PARTY CLOTHES AND CHRISTMAS FILM DAY

**SCHOOL CLOSURES ON FRIDAY 19TH AT 1.30PM AND REOPENS ON
MONDAY 5TH JANUARY**

EXTRA CLUB WILL BE OPEN ON THE LAST DAY UNTIL 4PM.



Warrington Road Nursery School

Naylor Road, Widnes, WA8 OBS

'Learning, Nurturing and Growing Together'

- Run by qualified teachers and experienced teaching assistants
- Dedicated SENCo
- Smooth transition to Reception classes
- Small classes to support individual learning needs
- Enrolling children between 2-to-4 years
- 15 or 30 hours funded sessions available
- New from September 2025, 30 hours 2 year old funding, see eligibility on - <https://www.childcarechoices.gov.uk/15-and-30-hours-childcare-support>



Contact the nursery school for more information

- Monday - Friday
- 9am-12pm - Morning
- 12.45 - 3.45pm Afternoon
- Full days available
- Wrap around care with existing nursery staff for continuity and familiarity for your child
- 8am - 9am and 3.45-5pm and school holiday club subject to availability
- Plenty of parking for easy drop off



To register your interest, send name and contact details to reception@affns.co.uk or call 01514244686 for more information

HOW TO CONTACT US

We have an open door policy at our school and you can talk to anyone about any issues you have but we want to ensure that you speak to the right person to resolve the issues at first contact.

For issues relating to your child's learning or welfare please contact your class teacher first. Face to Face at the end of the day is best but we understand that this isn't always possible or that you may have issues that you don't want to discuss in front of the children or other parents.

You can email them with your concerns or ask them to call you or arrange a convenient time to come in.

CLASS	TEACHER	EMAIL
Reception	Mr McCulloch	Senco.stjohnfisher@haltonlearning.net
Year 1	Miss Whitley	Emily.whitley@SJFPRIMARY.CO.UK
Year 2	Mrs Case	case@SJFPRIMARY.CO.UK
Year 3	Mr Redmond	redmond@SJFPRIMARY.CO.UK
Year 4	Miss Sweeney	sweeney@SJFPRIMARY.CO.UK
Year 5	Mrs Highcock	highcock@SJFPRIMARY.CO.UK
Year 6	Mrs Callender	callender@SJFPRIMARY.CO.UK

For Pastoral or Safeguarding concerns please contact Mrs. Smith via the school office number or by email.

Pastoral.stjohnfisher@haltonlearning.net

For all general enquiries, payments, trips, medicines and to advise of early pickups for appointments etc please contact the Office as normal on 0151 424 7794.

As always Mrs. Dickinson and Mrs. Harrison are always available.

We hope this process will make it easier for you.

For
Your
Information

St John Fisher— on Instagram
stjohnfisherwidnescps



<https://www.paperturn-view.com/wednesday-word/good-news?>

8.40am Gates Open

KS1 use the Reception wooden gate and KS2 use the large green gate.

8.45am Bell rings and children line up.

8.50am School day starts, anyone in after this will get a late mark.

3.05pm GATES OPEN

3.15pm School day ends

ALLERGIES

Our kitchen is nut free—we would ask that you do not send products containing nuts in to school in lunch boxes or snacks. Thank you for the support with this as it will limit the risk for our children with nut allergies.

PARKING AROUND THE SCHOOL AT DROP OFF AND COLLECTION

Can we please ask that you do not park or manoeuvre outside the gates when dropping off/collecting. As you can appreciate the school is situated in a side road which makes parking difficult so we would ask that you park elsewhere rather than risk manoeuvring on Edward Street.

We understand that you are all busy and have places to go of a morning and evening but please let's not wait for a child to be hurt.