



St John Fisher Catholic Primary School

"Growing through God, we learn, laugh and love"

Newsletter 21st November 2025

PHSE

Year 4 we have been thinking about differences and why they matter. They have explored how the world is a better, more interesting place because we are all unique.



Skip2BFit

Tuesday 25th November

We are having a whole school PE session on Tuesday.

During the sessions, the instructor will talk to the children about why exercise is important and what happens to the body when we are active.

The children are first shown how to do a basic skip, followed by a demonstration of what can be achieved through practice.

After a warm-up, they are then given the chance to skip themselves.

Healthy eating is also emphasised. At the end of the session, blueberries are handed out to both children and staff.

As many children have not tried them before, it's a great opportunity to introduce a new fruit. The blueberries come in small reusable boxes which can later be used in lunchboxes for grapes, raisins, or more blueberries.

Children are to wear their school uniform but bring in suitable footwear such as trainers or pumps to change into.

Year 3

As part of their RE lesson, Year 3 acted out the annunciation of Joseph.



PIC•COLLAGE

Reverse Advent Calendar



This Advent, our school community is invited to take part in a Reverse Advent Calendar.

Instead of receiving something each day, we give something.

Each day of Advent, we are asking pupils to bring in a small item for families in need.

Through our acts of kindness, we prepare a manger of love for the coming of Christ.

"Whatever you did for one of the least of these brothers and sisters of mine, you did for me."

—Matthew 25:40

Thank you for helping us share Christ's love this Advent season.

Advent is a time to get ready for Jesus!

This year, each class will make a Reverse Advent Calendar.

Each day, pupils can bring something small to help others—like food, toiletries, socks, or a little treat.

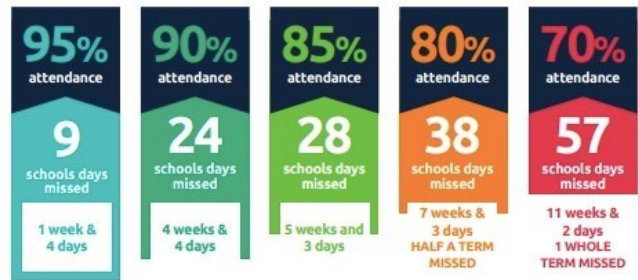
Every gift helps us shine God's love in the world

We all have Christmas Jumpers that no longer fit so rather than buy new ones we are doing a swap. Children can bring their old one in and swap it for a preloved one in their size, lovingly donated by another child. This way we get to recycle our old ones and save some money along the way.



**MOMENTS
MATTER,
ATTENDANCE
COUNTS.**

Every day in school counts...



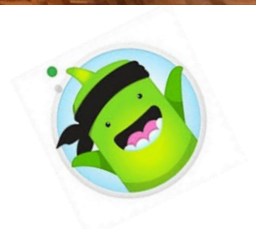
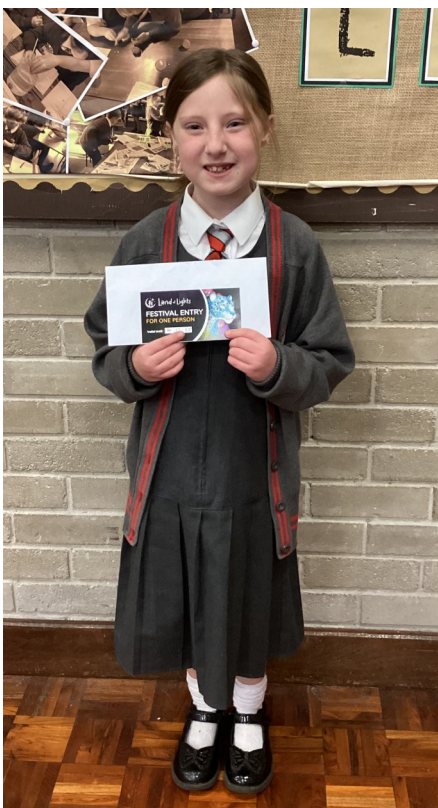
and every minute counts...



St. John Fisher Primary - Attendance 17 Nov 2025—21 Nov 2025

Year Group	Present R/C: Marks (%)	Late R/C: Marks (Count)	
Year R	92.9%	0	
Year Y1	96.2%	1	
Year Y2	95.7%	7	
Year Y3	96.7%	3	3rd
Year Y4	96.4%	4	
Year Y5	97.4%	9	2nd
Year Y6	98.0%	9	1st

**Congratulations to the following Children who have been awarded
our Smile, Dojo and Superstar awards
and also our Reading Plus and Junior Safety Officer winners**





Thursday 4th December

This year we are combining our Christmas Bingo and Christmas Fair.

Doors will open at 5pm with eyes down for 6pm.

Bingo tickets will be on sale from 5.30pm.

Stalls will be open in the Year 3 classroom from 5pm before the Bingo and during the break.

We will have the following stalls:


- Prize Tombola
- Sweet Cones
- Reindeer Food
- Hot Chocolate cones
 - Cake Stall
- Teddy Tombola.
- Face Painting

Children can dress down and donate on Friday 28th November.


All bottles, sweets and gift donations are welcome and very much appreciated.




Dress Down on
Friday 28th
Nov— Bottle,
Sweets and Gift
donations please



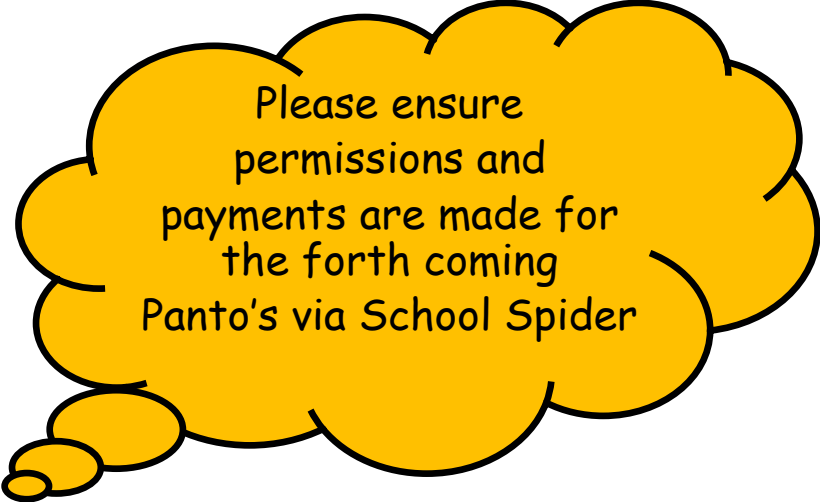
Raffle Tickets for
the Bingo have
gone home in book
bags—please
return by 28th Nov




Our Travelling
Nativity will be
going home again in
December—more
info to follow




Nativity Tickets
will be finalised
by the end of
next week




Please ensure
permissions and
payments are made for
the forth coming
Panto's via School Spider



Santa Dash
details coming
soon



Please remember
to book your
child's school
lunch



Don't forget to
update your
contact details
if they change



NOVEMBER

24TH— YEAR 6 CHEMISTRY WITH CABBAGE

25TH—SKIP2BFIT—ALL SCHOOL

28TH—DRESS DOWN AND DONATE FOR THE BINGO

DECEMBER

4TH—CHRISTMAS BINGO

5TH— REC/1/2 HEARTS PANTO TRIP

8TH— Y3 AND 4—PLANET ICE PANTO

8TH—YEAR 5 FIRE SERVICE VISIT

9TH—YEAR 2 AND 3 NATIVITY

10TH— KS2 CAROLS AT CHURCH 6PM

11TH—RECEPTION AND YEAR 1 NATIVITY

12TH—SANTA DASH

16TH YEAR 6 FLU MOP UP

16TH—BREAKFAST WITH SANTA

17TH—CHRISTMAS DINNER AND JUMPER DAY

18TH— PARTY CLOTHES AND CHRISTMAS FILM DAY

**SCHOOL CLOSING ON FRIDAY 19TH AT 1.30PM AND REOPENS ON
MONDAY 5TH JANUARY**

EXTRA CLUB WILL BE OPEN ON THE LAST DAY UNTIL 4PM.

HOW TO CONTACT US

We have an open door policy at our school and you can talk to anyone about any issues you have but we want to ensure that you speak to the right person to resolve the issues at first contact.

For issues relating to your child's learning or welfare please contact your class teacher first. Face to Face at the end of the day is best but we understand that this isn't always possible or that you may have issues that you don't want to discuss in front of the children or other parents.

You can email them with your concerns or ask them to call you or arrange a convenient time to come in.

CLASS	TEACHER	EMAIL
Reception	Mr McCulloch	Senco.stjohnfisher@haltonlearning.net
Year 1	Miss Whitley	Emily.whitley@SJFPRIMARY.CO.UK
Year 2	Mrs Case	case@SJFPRIMARY.CO.UK
Year 3	Mr Redmond	redmond@SJFPRIMARY.CO.UK
Year 4	Miss Sweeney	sweeney@SJFPRIMARY.CO.UK
Year 5	Mrs Highcock	highcock@SJFPRIMARY.CO.UK
Year 6	Mrs Callender	callender@SJFPRIMARY.CO.UK

For Pastoral or Safeguarding concerns please contact Mrs. Smith via the school office number or by email.

Pastoral.stjohnfisher@haltonlearning.net

For all general enquiries, payments, trips, medicines and to advise of early pickups for appointments etc please contact the Office as normal on 0151 424 7794.

As always Mrs. Dickinson and Mrs. Harrison are always available.

We hope this process will make it easier for you.



St John Fisher— on Instagram
stjohnfisherwidnescps



<https://www.paperturn-view.com/wednesday-word/good-news?>

8.40am Gates Open

KS1 use the Reception wooden gate and KS2 use the large green gate.

8.45am Bell rings and children line up.

8.50am School day starts, anyone in after this will get a late mark.

3.05pm GATES OPEN

3.15pm School day ends

ALLERGIES

Our kitchen is nut free—we would ask that you do not send products containing nuts in to school in lunch boxes or snacks. Thank you for the support with this as it will limit the risk for our children with nut allergies.

PARKING AROUND THE SCHOOL AT DROP OFF AND COLLECTION

Can we please ask that you do not park or manoeuvre outside the gates when dropping off/collecting. As you can appreciate the school is situated in a side road which makes parking difficult so we would ask that you park elsewhere rather than risk manoeuvring on Edward Street.

We understand that you are all busy and have places to go of a morning and evening but please lets not wait for a child to be hurt.