



Different Faiths

This week the children have been learning about other Faiths. We had a special visitor who did some workshops with KS1.

The children wore costumes and did traditional dancing.



Year 6



Year 3

The year 3 children have been learning about Islam this week, we have learnt about what a Mosque is and all the distinctive features it has, the children have really enjoyed the topic.



Reception



Reception have been learning about Hinduism and the celebration of Diwali. They have made Diwali sweets, learnt the story of Rama and Sita and made fireworks.



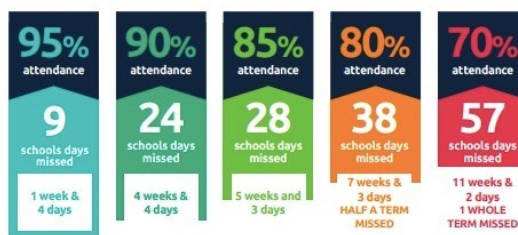


Today, we carried out a scientific investigation to learn about hygiene and how germs can spread through touch. We used four different colours of glitter to represent different germs. First, four children put one colour of glitter on their hands and then shook hands with their friends. We observed how the glitter quickly spread from person to person, and soon everyone had all four colours on their hands. This showed us how easily germs can transfer. After our investigation, we practised good hand-washing skills using soap and warm water to wash the glitter away and keep our hands clean.



**MOMENTS
MATTER,
ATTENDANCE
COUNTS.**

Every day in school counts...



and every minute counts...



School target is 96%

National average is 95.4%

St John Fisher Primary Attendance - 94.6% below both School target and National average

Attendance Reports

Next week, we'll be sending home attendance reports for every student. This will give you a chance to see how your child's attendance is going and whether there's anything that might need some improvement.

St. John Fisher Primary - Attendance

3 Nov 2025—7 Nov 2025

Year Group	Present	Late Marks	Weekly Ranking
Year R	96.4%	1	1st
Year Y1	94.8%	9	
Year Y2	94.4%	6	
Year Y3	90.4%	5	
Year Y4	95.7%	3	3rd
Year Y5	94.8%	6	
Year Y6	96.3%	7	2nd

Admissions 2026



It is that time of year again when Year 6 can apply for High School and we open our doors to 2026 Reception applications.

Please spread the word to anyone you know who might want to apply to our lovely little school.

We have received a number of complaints about parking. Please be considerate of our neighbours on Castle Street and Edward Street when dropping off and collecting.

Please remember to send PE kits in to school.



Please book your child's lunch on school grid—it is important that you do this before the start of the school day. You can book right up to the end of term.



It is very important that we keep your information up to date.

If there are any changes to telephone numbers, emails or contact details and those authorised to pick up please advise us as soon as possible.

**Congratulations to the following
Children who have been awarded our
Smile, Dojo and Superstar awards
this week.**





NOVEMBER

20TH– FLU VACCINATIONS FOR YEAR 6 AND MOP UP

24TH– YEAR 6 CHEMISTRY WITH CABBAGE

25TH–SKIP2BFIT–ALL SCHOOL

28TH–DRESS DOWN AND DONATE FOR THE BINGO

DECEMBER

4TH–CHRISTMAS BINGO

5TH– REC/1/2 HEARTS PANTO TRIP

8TH– Y3 AND 4–PLANET ICE PANTO

8TH–YEAR 5 FIRE SERVICE VISIT

9TH–YEAR 2 AND 3 NATIVITY

10TH– KS2 CAROLS AT CHURCH 6PM

11TH–RECEPTION AND YEAR 1 NATIVITY

12TH–SANTA DASH

16TH YEAR 6 FLU MOP UP

16TH–BREAKFAST WITH SANTA

17TH–CHRISTMAS DINNER AND JUMPER DAY

18TH– PARTY CLOTHES AND CHRISTMAS FILM DAY

**SCHOOL CLOSING ON FRIDAY 19TH AT 1.30PM AND REOPENS ON
MONDAY 5TH JANUARY**

EXTRA CLUB WILL BE OPEN ON THE LAST DAY UNTIL 4PM.

HOW TO CONTACT US

We have an open door policy at our school and you can talk to anyone about any issues you have but we want to ensure that you speak to the right person to resolve the issues at first contact.

For issues relating to your child's learning or welfare please contact your class teacher first. Face to Face at the end of the day is best but we understand that this isn't always possible or that you may have issues that you don't want to discuss in front of the children or other parents.

You can email them with your concerns or ask them to call you or arrange a convenient time to come in.

CLASS	TEACHER	EMAIL
Reception	Mr McCulloch	Senco.stjohnfisher@haltonlearning.net
Year 1	Miss Whitley	Emily.whitley@SJFPRIMARY.CO.UK
Year 2	Mrs Case	case@SJFPRIMARY.CO.UK
Year 3	Mr Redmond	redmond@SJFPRIMARY.CO.UK
Year 4	Miss Sweeney	sweeney@SJFPRIMARY.CO.UK
Year 5	Mrs Highcock	highcock@SJFPRIMARY.CO.UK
Year 6	Mrs Callender	callender@SJFPRIMARY.CO.UK

For Pastoral or Safeguarding concerns please contact Mrs. Smith via the school office number or by email.

Pastoral.stjohnfisher@haltonlearning.net

For all general enquiries, payments, trips, medicines and to advise of early pickups for appointments etc please contact the Office as normal on 0151 424 7794.

As always Mrs. Dickinson and Mrs. Harrison are always available.

We hope this process will make it easier for you.



St John Fisher— on Instagram
stjohnfisherwidnescps

St John Fisher—Live on X
Follow us @SJF_Widnes.



<https://www.paperturn-view.com/wednesday-word/good-news?>

8.40am Gates Open

KS1 use the Reception wooden gate and KS2 use the large green gate.

8.45am Bell rings and children line up.

8.50am School day starts, anyone in after this will get a late mark.

3.05pm GATES OPEN

3.15pm School day ends

ALLERGIES

Our kitchen is nut free—we would ask that you do not send products containing nuts in to school in lunch boxes or snacks. Thank you for the support with this as it will limit the risk for our children with nut allergies.

PARKING AROUND THE SCHOOL AT DROP OFF AND COLLECTION

Can we please ask that you do not park or manoeuvre outside the gates when dropping off/collecting. As you can appreciate the school is situated in a side road which makes parking difficult so we would ask that you park elsewhere rather than risk manoeuvring on Edward Street. We understand that you are all busy and have places to go of a morning and evening but please lets not wait for a child to be hurt.