



ST. LUKE'S CHURCH OF ENGLAND PRIMARY SCHOOL Newsletter

Friday 22nd May 2026

Week Commencing Monday 8th June 2026

Year 1 Phonics Screening and Year 4 Multiplication Checks

Monday **Dance Club**

Tuesday **Violin/Piano/Keyboard/Guitar Lessons**
Football Club
Infant Choir Club

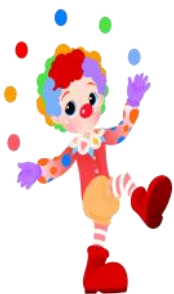
Wednesday **Voice/Percussion Lessons**
Group A Inspire Session 1.30pm
Year 5 & 6 Cricket Club

Thursday **Piano/Keyboard/Woodwind/Brass Lessons**
Group B Inspire Session 1.30pm
Drama Club
Junior Choir Club

Friday **Normal School Day**



Happy's Circus



Thank you everybody who supported the Circus event last Saturday.

A very big thank you to the Friends of St Luke's for all their hard work in organising the circus.

The day was a great success and valuable funds were raised which will benefit all of the children in school.



Year 1 Phonics Screening and Year 4 Multiplication Checks

Could we please request that all the children in Year One and Year Four are in school on time each day this week.

Year One phonics screening and Year Four multiplication checks will take place during the week.

Thank you.



Safe and Sound Club Hygiene Rating

Congratulations to Safe and Sound Club on achieving a five star hygiene rating following an unannounced Environmental Health inspection on Thursday evening.

Well Done to all of the Safe and Sound Club Staff.



IMPORTANT — Contacting School Regarding Alterations to Collection of Children

In the interest of safeguarding all of our children and staff please could we emphasise how important it is that parents/guardians contact the school office and speak to a member of staff if there are any alterations to the collection of their children.

Email, Dojo and voicemail messages may be missed if a member of staff is teaching, at a meeting, training off site or is off work due to illness.

Thank you for your continued understanding and support.

School Hedgehog

Thank you for the kitten food that has been sent in to school this week.

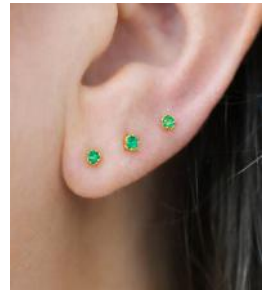
In December we rescued a hedgehog that had been knocked over on the school drive. The hedgehog (who we named Siams) spent a number of months in the hedgehog rescue center before being returned to school in April. Siams now lives on the school site in a hedgehog house that we have built for her and we feed Siams (and hopefully other hedgehogs!) every day with dry kitten food.



Earrings

Could we please remind parents that in the interest of health and safety, earrings must not be worn for school. If a child is wearing earrings, parents will be contacted and asked to come into school to remove them.

For further information please see the school uniform policy which can be found on the school website. Thank you.



Dates for Your Diary



Monday 8th June — School Re Opens to Pupils

W/C Monday 8th June — Year 1 Phonics Screening

W/C Monday 8th June — Year 4 Multiplication Checks

Wednesday 10th June — Group A Inspire Session 1.30pm

Thursday 11th June — Group B Inspire Session 1.30pm

W/C Monday 15th June — Year 6 Careers Week

Tuesday 16th June — Music Evening 6.00pm in School

Wednesday 17th June — Inspire 1.30pm

Thursday 18th June — Year 5 Trip to Quarry Bank Mill

Friday 19th June — Sports Day

Monday 22nd June — Wigan Music Service 'Strings' Demonstration

Tuesday 23rd June — UK Sport World Cup Day (please wear sports clothes)

Friday 26th June — Road Safety Team Working with Year 6

Friday 26th June — Year 3 Roman Trip to Chester

Tuesday 30th June — Year 1 Trip to Imagine That

Friday 3rd July — Non Uniform Rainbow Day and Colour Run (further information to follow)

Tuesday 7th July — Year 3 Gala Concert

Thursday 9th July — Year 5+6 End of Year Production 1.30pm and 6.30pm

Tuesday 14th July — Year 4 Trip to Liverpool World Museum

Thursday 16th July — Year 6 Leavers and Annual Awards Assembly

Friday 17th July — St Luke's Has Got Talent

Friday 17th July — School Closes for Summer at 3.15pm (After School Club

WIN A SIGNED MANCHESTER UNITED SHIRT!

SUPPORT A GREAT CAUSE AND WIN AN INCREDIBLE PRIZE!

100% OF PROCEEDS GO TO Zak's goal

SUPPORTING Zak's goal

ENTER NOW!

TICKETS £5 EACH

BONE CANCER RESEARCH TRUST
UNTIL THERE'S A CURE

RAFFLE CLOSING 15TH JULY 2024

THANK YOU FOR YOUR SUPPORT!
In memory of Zak, a proud student of Ashleigh Round Primary School

[Enter Raffle to Win Signed Manchester United shirt hosted by Ashleigh Round](#)



MAY HALF-TERM DANCE CAMP



Tue 26th May to
Fri 29th May 2026



St Luke's CofE Infant &
Junior School

Church Lane, Warrington WA3 2PW



Street Dance & Commercial



Fun Games & Challenges



Dance Battles & Performances



Build Confidence & Make Friends



Medal & Certificate Included



Reception to Year 6



07891 205763



info@uksportscoaching.co.uk



www.uksportscoaching.co.uk

Ofsted

Ofsted Registered
Childcare Provider



SCAN QR TO BOOK



Trusted • Safe • Professional

May Half-term FOOTBALL CAMP



- ✓ Professional Coaching
- ✓ Fun Games
- ✓ Skills & Matches
- ✓ Book Your Place Now!



SCAN TO BOOK

St Luke's CofE Infant & Junior School,
Church Lane, Warrington WA3 2PW

☎ 07891 205763 | ✉ info@uksportscoaching.co.uk

www.uksportscoaching.co.uk

GOLBORNE CC



FOR BOYS
& GIRLS
AGED 5-8

BIG
MOMENTS
START
HERE!

ALL STARS CRICKET

LEARN. PLAY. LAUGH. SHINE! ★

FUN
FIRST
CRICKET
ALWAYS!



**AWESOME
ACTIVITIES**

Games, skills
and lots of fun!



**MAKE
FRIENDS**

Play together
and have a blast!



**FEEL LIKE
A STAR**

Every child
shines!



DATE:

Tue, 12 May – Tue, 07 Jul 2026



TIME:

18:00 – 19:00

**JOIN THE FUN!
SIGN UP TODAY**



SCAN THE QR CODE OR REGISTER ONLINE:

[ecb.clubspark.uk/AllStars/golborne/
Course/12a488a7-c2ac-41f4-935e-a3a6fa39322f](http://ecb.clubspark.uk/AllStars/golborne/Course/12a488a7-c2ac-41f4-935e-a3a6fa39322f)

EVERY BALL COUNTS!



St Luke's Church



Lowton and Golborne Food Bank

St Luke's Church collect food items weekly for the food bank run by All Saints Church in Golborne. All the items collected are distributed to those who are in need within the Lowton and Golborne area.

If you would like to contribute towards the Food Bank, items can be brought to St Luke's Church before or after the services on Wednesday or Sunday morning (services run from 10.00am until approximately 11.00am) or be taken to St Luke's Church Thursday Coffee Morning. Thank you.



Coffee Morning

Every Thursday St Luke's Church Fellowship Room (access on Slag Lane opposite Lowton West School), is open during the morning school run from 8.45am until 10.00am for tea, coffee and a chat.

Forget-Me-Not Café

The café has relocated to Broadmead on Golborne Road where there should be adequate on site car parking spaces for everyone.



St Luke's Church Services

Church services take place at 10.00am on Wednesday and Sunday — everybody welcome.

Refreshments will be served after the services in the Fellowship Room.



Vestry Service

Weddings and Baptisms can be booked every Tuesday evening between 7.00pm and 8.00pm in St Luke's Church Fellowship Room (access on Slag Lane).



Café Church

Café Church will take place every second Saturday in St Luke's Church.

The next Café Church will be held on Saturday 10th May at 10.00am.

