



ST. LUKE'S CHURCH OF ENGLAND PRIMARY SCHOOL

Newsletter

Friday 15th May 2026

Week Commencing Monday 18th May 2026

Monday **Dance Club**
New Intake Meeting 5.00pm in School



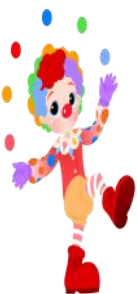
Tuesday **Violin/Piano/Keyboard/Guitar Lessons**
Year 4 Wider Opportunities Brass Concert
KS1 Football Club and KS2 Rugby Club
Infant Choir Club

Wednesday **Voice/Percussion Lessons**
Art Club
Year 5 & 6 Cricket Club

Thursday **Piano/Keyboard/Woodwind/Brass Lessons**
Pegasus Working with Year 6
Gardening Club and Drama Club
Junior Choir Club

Friday **Pegasus Working with Year 6**
**School Closes for Half Term at 3.15pm (After School Club
Open As Usual)**

Happy's Circus



**Thank you to everybody who sent in bottles, jars and
chocolate today for the tombolas at our circus tomorrow.**

We look forward to seeing you at this fun filled event.

Tickets are still available on line or on the day at the gate.

Year 6 SATs Week

Well done to all the Year 6 children, they have worked extremely hard this week during their SATs tests.



Thank you to the Year 6 staff for organising the 'SATs Breakfast Club' which the children all enjoyed attending each morning.

A big thank you to all the school staff and parents for the support that they have given to the children on the run up to the SATs tests and during them.



IMPORTANT — Contacting School Regarding Alterations to Collection of Children

In the interest of safeguarding all of our children and staff please could we emphasise how important it is that parents/guardians contact the school office and speak to a member of staff if there are any alterations to the collection of their children.

Email, Dojo and voicemail messages may be missed if a member of staff is teaching, at a meeting, training off site or is off work due to illness.

Thank you for your continued understanding and support.

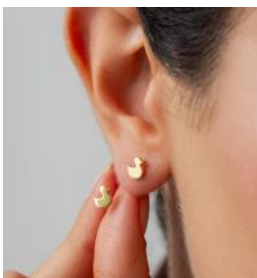
School Hedgehog

In December we rescued a hedgehog that had been knocked over on the school drive. The hedgehog (who we named Siams) spent a number of months in the hedgehog rescue center before being returned to school in April. Siams now lives on the school site in a hedgehog house that we have built for her.



We feed Siams every day with dry kitten food, if anybody is able to donate any dry kitten food for her it would be gratefully received. Thank you.

Earrings



Could we please remind parents that in the interest of health and safety, earrings must not be worn for school.

If a child is wearing earrings, parents will be contacted and asked to come into school to remove them.

For further information please see the school uniform policy which can be found on the school website. Thank you.

Dates for Your Diary



Saturday 16th May — Happy's Circus

Monday 18th May — New Intake Meeting 5.00pm in School

Tuesday 19th May — Year 4 Wider Opportunities Brass Concert 2.30pm

Thursday 21st & Friday 22nd May — Pegasus Working with Year 6

Friday 22nd May — School Closes at 3.15pm for Half Term

Monday 8th June — School Re Opens to Pupils

W/C Monday 8th June — Year 1 Phonics Screening

W/C Monday 8th June — Year 4 Multiplication Checks

Wednesday 10th June — Group A Inspire Session 1.30pm

Thursday 11th June — Group B Inspire Session 1.30pm

W/C Monday 15th June — Year 6 Careers Week

Tuesday 16th June — Music Evening 6.00pm in School

Wednesday 17th June — Inspire 1.30pm

Thursday 18th June — Year 5 Trip to Quarry Bank Mill

Friday 19th June — Sports Day

Monday 22nd June — Wigan Music Service 'Strings' Demonstration

Tuesday 23rd June — UK Sport World Cup Day (please wear sports clothes)

Friday 26th June — Road Safety Team Working with Year 6

Friday 26th June — Year 3 Roman Trip to Chester

Tuesday 30th June — Year 1 Trip to Imagine That

Friday 3rd July — Non Uniform Rainbow Day and Colour Run (further information to follow)

Tuesday 7th July — Year 3 Gala Concert

Thursday 9th July — Year 5+6 End of Year Production 1.30pm and 6.30pm

Tuesday 14th July — Year 4 Trip to Liverpool World Museum

Thursday 16th July — Year 6 Leavers and Annual Awards Assembly

Friday 17th July — St Luke's Has Got Talent

Friday 17th July — School Closes for Summer at 3.15pm (After School Club Open as usual)

SATURDAY 16TH MAY 2026

**ST LUKE'S PRIMARY SCHOOL, CHURCH LANE,
LOWTON**



Gates Open: 12pm

Circus Doors Open: 1.30pm

Show Starts: 2pm

Tickets:

£12 per ticket

£45 for a family of 4

Free for children aged 2 & under



**HAPPY'S
CIRCUS**



**FRIENDS OF
ST. LUKE'S**

Registered Charity 1022101

Please follow this link if you would like to pre order your tickets for the circus

<https://www.pta-events.co.uk/friendsofstlukeslowton/index.cfm?event=event&eventId=110694>

Tickets are £12 each or 4 for £45 (family ticket).

MAY HALF-TERM DANCE CAMP



Tue 26th May to
Fri 29th May 2026



St Luke's CofE Infant &
Junior School

Church Lane, Warrington WA3 2PW



Street Dance & Commercial



Fun Games & Challenges



Dance Battles & Performances



Build Confidence & Make Friends



Medal & Certificate Included



Reception to Year 6



07891 205763



info@uksportscoaching.co.uk



www.uksportscoaching.co.uk



Ofsted Registered
Childcare Provider



SCAN QR TO BOOK



Trusted • Safe • Professional

May Half-term FOOTBALL CAMP



- ✓ Professional Coaching
- ✓ Fun Games
- ✓ Skills & Matches
- ✓ Book Your Place Now!



SCAN TO BOOK

St Luke's CofE Infant & Junior School,
Church Lane, Warrington WA3 2PW

☎ 07891 205763 | ✉ info@uksportscoaching.co.uk

www.uksportscoaching.co.uk

GOLBORNE CC



BIG
MOMENTS
START
HERE!

FOR BOYS
& GIRLS
AGED 5-8

ALL STARS CRICKET

LEARN. PLAY. LAUGH. SHINE! ★

FUN
FIRST
CRICKET
ALWAYS!



**AWESOME
ACTIVITIES**

Games, skills
and lots of fun!



**MAKE
FRIENDS**

Play together
and have a blast!



**FEEL LIKE
A STAR**

Every child
shines!



DATE:

Tue, 12 May – Tue, 07 Jul 2026



TIME:

18:00 – 19:00

**JOIN THE FUN!
SIGN UP TODAY**



SCAN THE QR CODE OR REGISTER ONLINE:

[ecb.clubspark.uk/AllStars/golborne/
Course/12a488a7-c2ac-41f4-935e-a3a6fa39322f](http://ecb.clubspark.uk/AllStars/golborne/Course/12a488a7-c2ac-41f4-935e-a3a6fa39322f)

EVERY BALL COUNTS!



St Luke's Church



Lowton and Golborne Food Bank

St Luke's Church collect food items weekly for the food bank run by All Saints Church in Golborne. All the items collected are distributed to those who are in need within the Lowton and Golborne area.

If you would like to contribute towards the Food Bank, items can be brought to St Luke's Church before or after the services on Wednesday or Sunday morning (services run from 10.00am until approximately 11.00am) or be taken to St Luke's Church Thursday Coffee Morning. Thank you.



Coffee Morning

Every Thursday St Luke's Church Fellowship Room (access on Slag Lane opposite Lowton West School), is open during the morning school run from 8.45am until 10.00am for tea, coffee and a chat.

Forget-Me-Not Café

The café has relocated to Broadmead on Golborne Road where there should be adequate on site car parking spaces for everyone.



St Luke's Church Services

Church services take place at 10.00am on Wednesday and Sunday — everybody welcome.

Refreshments will be served after the services in the Fellowship Room.



Vestry Service

Weddings and Baptisms can be booked every Tuesday evening between 7.00pm and 8.00pm in St Luke's Church Fellowship Room (access on Slag Lane).



Café Church

Café Church will take place every second Saturday in St Luke's Church.

The next Café Church will be held on Saturday 10th May at 10.00am.

