



ST. LUKE'S CHURCH OF ENGLAND PRIMARY SCHOOL

Newsletter

Friday 8th May 2026

Week Commencing Monday 11th May 2026

Year 6 SATs Week

Monday Dance Club

**Tuesday KS1 Football Club and KS2 Rugby Club
Infant Choir Club**

**Wednesday Art Club
Year 5 & 6 Cricket Club
Gardening Club and Drama Club**

Thursday Junior Choir Club

**Friday Non-Uniform Circus Day— if you are able to, please could
Infants bring in chocolate and juniors filled bottles and jars
for the tombolas at Happy's Circus Day**



Year 6 SATs Week

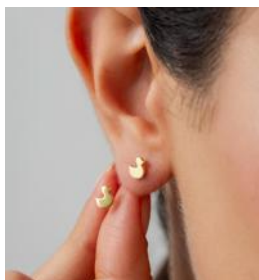
Year 6 SATs will take place next week in school. Please ensure that your children have early nights and breakfast before school.

Mr Smith and Mrs Tabiner have organised a 'SATs Breakfast Club' for the Year 6 children. This will start at 8.00am and a light breakfast snack will be provided. Information about this has been sent out.



If your child is attending the SATs Breakfast Club please arrive at school via the main office to register. If your child is already at Safe and Sound Breakfast Club please arrive as usual and notify the staff that they will be attending the SATs Breakfast Club.

Earrings



Could we please remind parents that in the interest of health and safety, earrings must not be worn for school.

If a child is wearing earrings, parents will be contacted and asked to come into school to remove them.

For further information please see the school uniform policy which can be found on the school website. Thank you.

Café Church

Please join us tomorrow morning (Saturday 9th May) in St Luke's Church for 'Café Church'.

Everyone is welcome to attend, refreshments are served from 9.30am and activities and worship will begin at 10.00am.



School Dinners



Please order your child's meal on School Hub before 9.30am each day. Failure to do so could result in your child having a sandwich and fruit for their lunch rather than a hot meal.

Please note that school meals can be ordered in advance.

If your child is absent from school please remember to cancel their meal before 9.30am so that you are not charged for it.



Bikes, Scooters, Outdoor Play Equipment and Pet Dogs

Could we please remind parents and children that bikes and scooters must not be ridden on the playground when dropping off and picking up and e-scooters are not allowed anywhere on the school site.

In the interest of the health and safety of all of our children and families, children are only allowed to use the outdoor play equipment during the school day when they are supervised by school staff. Please do not allow your children to play on the equipment before or after school.

Please could we also remind parents not to bring pet dogs onto the school grounds or cycle path and to be mindful of adults and children who may be afraid of dogs when dropping off or waiting for their children at the school gate .Thank you.



Dates for Your Diary



Monday 11th May — Year 6 SATs Week

Friday 15th May — Non Uniform Circus Day in School (if you are able to please could infants bring in chocolate and juniors filled bottles and jars for the tombolas at the circus day)

Saturday 16th May — Happy's Circus

Monday 18th May — New Intake Meeting 5.00pm in School

Tuesday 19th May — Year 4 Wider Opportunities Brass Concert 2.30pm

Thursday 21st & Friday 22nd May — Pegasus Working with Year 6

Friday 22nd May — School Closes at 3.15pm for Half Term

Monday 8th June — School Re Opens to Pupils

W/C Monday 8th June — Year 1 Phonics Screening

W/C Monday 8th June — Year 4 Multiplication Checks

Wednesday 10th June — Group A Inspire Session 1.30pm

Thursday 11th June — Group B Inspire Session 1.30pm

W/C Monday 15th June — Year 6 Careers Week

Tuesday 16th June — Music Evening 6.00pm in School

Wednesday 17th June — Inspire 1.30pm

Thursday 18th June — Year 5 Trip to Quarry Bank Mill

Friday 19th June — Sports Day

Monday 22nd June — Wigan Music Service 'Strings' Demonstration

Tuesday 23rd June — UK Sport World Cup Day (please wear sports clothes)

Friday 26th June — Road Safety Team Working with Year 6

Friday 26th June — Year 3 Roman Trip to Chester

Tuesday 30th June — Year 1 Trip to Imagine That

Friday 3rd July — Non Uniform Rainbow Day and Colour Run (further information to follow)

Tuesday 7th July — Year 3 Gala Concert

Thursday 9th July — Year 5+6 End of Year Production 1.30pm and 6.30pm

Tuesday 14th July — Year 4 Trip to Liverpool World Museum

Thursday 16th July — Year 6 Leavers and Annual Awards Assembly

Friday 17th July — St Luke's Has Got Talent

Friday 17th July — School Closes for Summer at 3.15pm (After School Club Open as usual)

SATURDAY 16TH MAY 2026

**ST LUKE'S PRIMARY SCHOOL, CHURCH LANE,
LOWTON**



Gates Open: 12pm

Circus Doors Open: 1.30pm

Show Starts: 2pm

Tickets:

£12 per ticket

£45 for a family of 4

Free for children aged 2 & under



**HAPPY'S
CIRCUS**



**FRIENDS OF
ST. LUKE'S**

Registered Charity 1022101



**Please follow this link if you would like to pre order your tickets for
the circus**

[https://www.pta-events.co.uk/friendsofstlukeslowton/index.cfm?
event=event&eventId=110694](https://www.pta-events.co.uk/friendsofstlukeslowton/index.cfm?event=event&eventId=110694)

Tickets are £12 each or 4 for £45 (family ticket).

MAY HALF-TERM DANCE CAMP



Tue 26th May to
Fri 29th May 2026



St Luke's CofE Infant &
Junior School

Church Lane, Warrington WA3 2PW



Street Dance & Commercial



Fun Games & Challenges



Dance Battles & Performances



Build Confidence & Make Friends



Medal & Certificate Included



Reception to Year 6



07891 205763



info@uksportscoaching.co.uk



www.uksportscoaching.co.uk



Ofsted Registered
Childcare Provider



SCAN QR TO BOOK



Trusted • Safe • Professional

May Half-term FOOTBALL CAMP



- ✓ Professional Coaching
- ✓ Fun Games
- ✓ Skills & Matches
- ✓ Book Your Place Now!



SCAN TO BOOK

St Luke's CofE Infant & Junior School,
Church Lane, Warrington WA3 2PW

☎ 07891 205763 | ✉ info@uksportscoaching.co.uk

www.uksportscoaching.co.uk

GOLBORNE CC



FOR BOYS
& GIRLS
AGED 5-8

BIG
MOMENTS
START
HERE!

ALL STARS CRICKET

LEARN. PLAY. LAUGH. SHINE! ★

FUN
FIRST
CRICKET
ALWAYS!



**AWESOME
ACTIVITIES**

Games, skills
and lots of fun!



**MAKE
FRIENDS**

Play together
and have a blast!



**FEEL LIKE
A STAR**

Every child
shines!



DATE:

Tue, 12 May – Tue, 07 Jul 2026



TIME:

18:00 – 19:00

**JOIN THE FUN!
SIGN UP TODAY**



SCAN THE QR CODE OR REGISTER ONLINE:

[ecb.clubspark.uk/AllStars/golborne/
Course/12a488a7-c2ac-41f4-935e-a3a6fa39322f](https://ecb.clubspark.uk/AllStars/golborne/Course/12a488a7-c2ac-41f4-935e-a3a6fa39322f)

EVERY BALL COUNTS!



St Luke's Church



Lowton and Golborne Food Bank

St Luke's Church collect food items weekly for the food bank run by All Saints Church in Golborne. All the items collected are distributed to those who are in need within the Lowton and Golborne area.

If you would like to contribute towards the Food Bank, items can be brought to St Luke's Church before or after the services on Wednesday or Sunday morning (services run from 10.00am until approximately 11.00am) or be taken to St Luke's Church Thursday Coffee Morning. Thank you.



Coffee Morning

Every Thursday St Luke's Church Fellowship Room (access on Slag Lane opposite Lowton West School), is open during the morning school run from 8.45am until 10.00am for tea, coffee and a chat.

Forget-Me-Not Café

The café has relocated to Broadmead on Golborne Road where there should be adequate on site car parking spaces for everyone.



St Luke's Church Services

Church services take place at 10.00am on Wednesday and Sunday — everybody welcome.

Refreshments will be served after the services in the Fellowship Room.



Vestry Service

Weddings and Baptisms can be booked every Tuesday evening between 7.00pm and 8.00pm in St Luke's Church Fellowship Room (access on Slag Lane).



Café Church

Café Church will take place every second Saturday in St Luke's Church.

The next Café Church will be held on Saturday 10th May at 10.00am.

