



# ST. LUKE'S CHURCH OF ENGLAND PRIMARY SCHOOL

## Newsletter

Friday 1st May 2026

### Week Commencing Monday 4th May 2026

**Monday** School Closed — May Day Bank Holiday

**Tuesday** Violin/Piano/Keyboard/Guitar Lessons  
KS1 Football Club and KS2 Rugby Club  
Infant Choir Club



**Wednesday** Voice/Percussion Lessons  
Art Club  
Year 5 & 6 Cricket Club

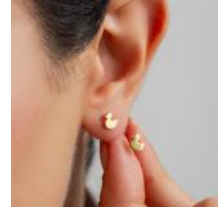
**Thursday** Piano/Keyboard/Woodwind/Brass Lessons  
Reception Nomad Rangers Day  
Year 2 Blue Planet Aquarium Trip  
Gardening Club  
Drama Club  
Junior Choir Club

**Friday** Sir David Attenborough's 100th Birthday Celebration in School  
Class Photographs (*Please come to school dressed in correct school uniform — if it is your P.E. day please bring your P.E. kit in a separate bag*)

### Earrings

Could we please remind parents that in the interest of health and safety, earrings must not be worn for school.

For further information please see the school uniform policy which can be found on the school website.



Thank you.

### Extreme Hairstyles and Hair Colouring



Please note that extreme hair styles including such styles as 'tram lines' and alternative hair colours are not part of the St Luke's school uniform.

Further information regarding hairstyles can be found on the school website in the uniform policy.

### School Dinners

Please order your child's meal on School Hub before 9.30am each day.

Failure to do so could result in your child having a sandwich and fruit for their lunch rather than a hot meal.

Please note that school meals can be ordered in advance.

If your child is absent from school please remember to cancel their meal before 9.30am so that you are not charged for it.



### Bikes, Scooters, Outdoor Play Equipment and Pet Dogs



Could we please remind parents and children that bikes and scooters must not be ridden on the playground when dropping off and picking up and e-scooters are not allowed anywhere on the school site.

In the interest of the health and safety of all of our children and families, children are only allowed to use the outdoor play equipment during the school day when they are supervised by school staff. Please do not allow your children to play on the equipment before or after school.

Please could we also remind parents not to bring pet dogs onto the school grounds or cycle path and to be mindful of adults and children

who may be afraid of dogs when dropping off or waiting for their children at the school gate .



Thank you.



## Dates for Your Diary

**Thursday 7th May — Nomad Rangers Forest School Day (Reception)**

**Thursday 7th May — Year 2 Trip to Blue Planet Aquarium**

**Friday 8th May — David Attenborough's 100th Birthday Celebration in School**

**Friday 8th May — Class Group Photographs**

**Monday 11th May — Year 6 SATs Week**

**Friday 15th May — Non Uniform Circus Day in School**

**Saturday 16th May — Happy's Circus**

**Monday 18th May — New Intake Meeting 5.00pm in School**

**Tuesday 19th May — Year 4 Wider Opportunities Brass Concert 2.30pm**

**Thursday 21st & Friday 22nd May — Pegasus Working with Year 6**

**Friday 22nd May — School Closes at 3.15pm for Half Term**

**Monday 8th June — School Re Opens to Pupils**

**W/C Monday 8th June — Year 1 Phonics Screening**

**W/C Monday 8th June — Year 4 Multiplication Checks**

**Wednesday 10th June — Group A Inspire Session 1.30pm**

**Thursday 11th June — Group B Inspire Session 1.30pm**

**W/C Monday 15th June — Year 6 Careers Week**

**Tuesday 16th June — Music Evening 6.00pm in School**

**Wednesday 17th June — Inspire 1.30pm**

**Thursday 18th June — Year 5 Trip to Quarry Bank Mill**

**Friday 19th June — Sports Day**

**Monday 22nd June — Wigan Music Service 'Strings' Demonstration**

**Tuesday 23rd June — UK Sport World Cup Day (please wear sports clothes)**

**Friday 26th June — Road Safety Team Working with Year 6**

**Friday 26th June — Year 3 Roman Trip to Chester**

**Tuesday 30th June — Year 1 Trip to Imagine That**

**Friday 3rd July — Non Uniform Rainbow Day and Colour Run (further information to follow)**

**Tuesday 7th July — Year 3 Gala Concert**

**Tuesday 7th July — Year 5+6 End of Year Production 1.30pm and 6.30pm**

**Tuesday 14th July — Year 4 Trip to Liverpool World Museum**

**Thursday 16th July — Year 6 Leavers and Annual Awards Assembly**

**Friday 17th July — St Luke's Has Got Talent**

**Friday 17th July — School Closes for Summer at 3.15pm ( After School Club Open as usual)**



**SATURDAY 16<sup>TH</sup> MAY 2026**

**ST LUKE'S PRIMARY SCHOOL, CHURCH LANE,  
LOWTON**



**Gates Open: 12pm**

**Circus Doors Open: 1.30pm**

**Show Starts: 2pm**

**Tickets:**

**£12 per ticket**

**£45 for a family of 4**

**Free for children aged 2 & under**



**HAPPY'S  
CIRCUS**



**FRIENDS OF  
ST. LUKE'S**

Registered Charity 1022101

**Please follow this link if you would like to pre order your tickets for  
the circus**

**[https://www.pta-events.co.uk/friendsofstlukeslowton/index.cfm?  
event=event&eventId=110694](https://www.pta-events.co.uk/friendsofstlukeslowton/index.cfm?event=event&eventId=110694)**

**Tickets are £12 each or 4 for £45 (family ticket).**

# MAY HALF-TERM DANCE CAMP



Tue 26<sup>th</sup> May to  
Fri 29<sup>th</sup> May 2026



St Luke's CofE Infant &  
Junior School

Church Lane, Warrington WA3 2PW



Street Dance & Commercial



Fun Games & Challenges



Dance Battles & Performances



Build Confidence & Make Friends



Medal & Certificate Included



Reception to Year 6



07891 205763



info@uksportscoaching.co.uk



www.uksportscoaching.co.uk



Ofsted Registered  
Childcare Provider



SCAN QR TO BOOK



Trusted • Safe • Professional

# May Half-term FOOTBALL CAMP



- ✓ Professional Coaching
- ✓ Fun Games
- ✓ Skills & Matches
- ✓ Book Your Place Now!



SCAN TO BOOK

St Luke's CofE Infant & Junior School,  
Church Lane, Warrington WA3 2PW

☎ 07891 205763 | ✉ info@uksportscoaching.co.uk

[www.uksportscoaching.co.uk](http://www.uksportscoaching.co.uk)

GOLBORNE CC



BIG MOMENTS START HERE!

FOR BOYS & GIRLS AGED 5-8

# ALL STARS CRICKET

LEARN. PLAY. LAUGH. SHINE! ★

FUN FIRST CRICKET ALWAYS!



**AWESOME ACTIVITIES**

Games, skills and lots of fun!



**MAKE FRIENDS**

Play together and have a blast!



**FEEL LIKE A STAR**

Every child shines!



**DATE:**

Tue, 12 May – Tue, 07 Jul 2026



**TIME:**

18:00 – 19:00

**JOIN THE FUN!  
SIGN UP TODAY**



SCAN THE QR CODE OR REGISTER ONLINE:

[ecb.clubspark.uk/AllStars/golborne/  
Course/12a488a7-c2ac-41f4-935e-a3a6fa39322f](http://ecb.clubspark.uk/AllStars/golborne/Course/12a488a7-c2ac-41f4-935e-a3a6fa39322f)

**EVERY BALL COUNTS!**



# St Luke's Church



## Lowton and Golborne Food Bank

St Luke's Church collect food items weekly for the food bank run by All Saints Church in Golborne. All the items collected are distributed to those who are in need within the Lowton and Golborne area.

If you would like to contribute towards the Food Bank, items can be brought to St Luke's Church before or after the services on Wednesday or Sunday morning (services run from 10.00am until approximately 11.00am) or be taken to St Luke's Church Thursday Coffee Morning. Thank you.



## Coffee Morning

Every Thursday St Luke's Church Fellowship Room (access on Slag Lane opposite Lowton West School), is open during the morning school run from 8.45am until 10.00am for tea, coffee and a chat.

## Forget-Me-Not Café

The café has relocated to Broadmead on Golborne Road where there should be adequate on site car parking spaces for everyone.



## St Luke's Church Services

Church services take place at 10.00am on Wednesday and Sunday — everybody welcome.

Refreshments will be served after the services in the Fellowship Room.



## Vestry Service

Weddings and Baptisms can be booked every Tuesday evening between 7.00pm and 8.00pm in St Luke's Church Fellowship Room (access on Slag Lane).



## Café Church

Café Church will take place every second Saturday in St Luke's Church.

*The next Café Church will be held on Saturday 10th May at 10.00am.*

