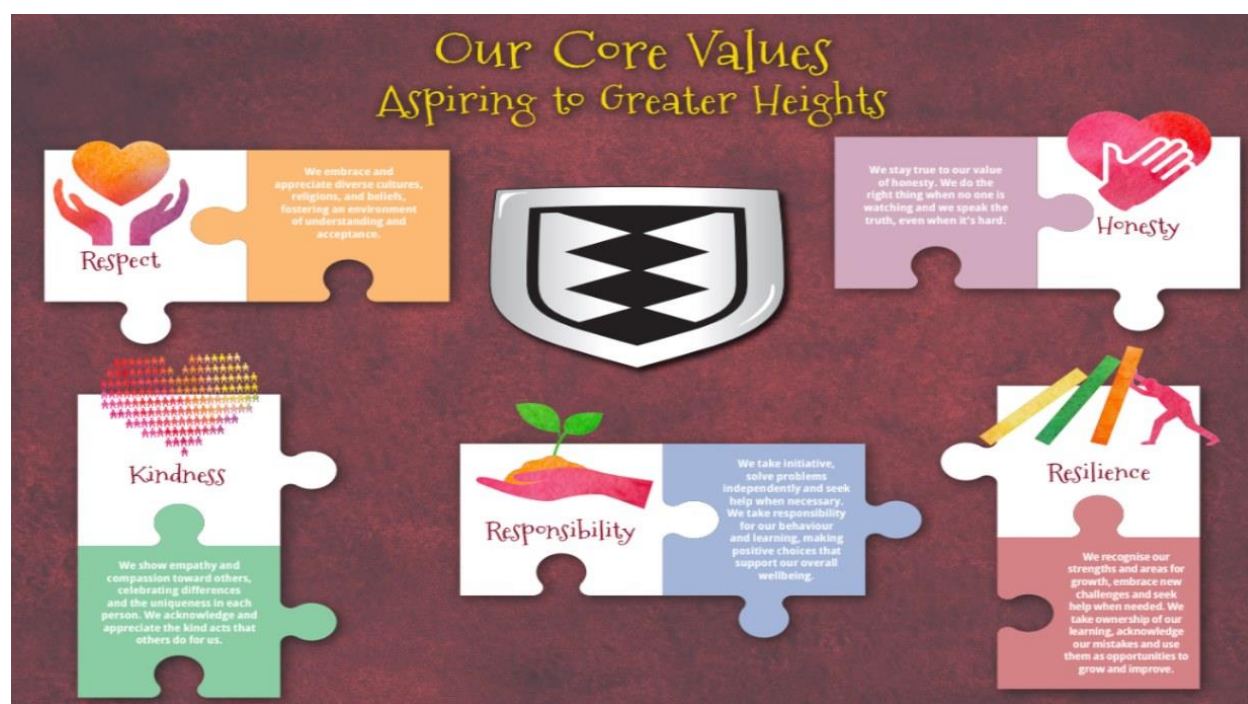




30/01/2026

Newsletter Friday 30th January 2026

Our Values for this half term



KINDNESS



Oughtonington's Core Value

We are happy, confident and well-rounded individuals. We have empathy and compassion towards others. We celebrate differences and uniqueness. We recognise the kind acts that other people do for us.

Related Values

empathy, compassion, generosity, and respect

Actions that show this value

Offering words of encouragement: A simple motivational text or a kind word can make a big impact, especially when someone is struggling.
Having a positive attitude: Smiling at others and engaging in friendly conversation can create a more positive atmosphere.

Believe in Your Potential

"We rise by lifting others."
"It's cool to be kind."

What does kindness look like?

Kindness is an action, a way of showing compassion and generosity towards others, often involving helping or doing something nice for someone without expecting anything in return. It can be displayed through small, everyday actions or larger, more deliberate gestures.



RESPECT



Oughttrington's Core Value

We are respectful and
tolerant of each
other's differences.
We understand
different cultures,
religions and beliefs.

Related Values

appreciation, awe, consideration, deference, dignity, esteem, honor,
recognition, regard, reverence

Actions that show this value

Active Listening: Paying attention,
making eye contact, and avoiding
interruptions when someone is
speaking.
Showing Appreciation: Expressing
gratitude, offering compliments, and
acknowledging achievements.
Courtesy and Consideration: Using
"please" and "thank you," holding
doors, and offering assistance.

Believe in Your Potential

"Respect is like a boomerang
that comes back to you." -
Unknown.

What does respect look like?

Respect is showing consideration and appreciation for others' feelings,
opinions, and rights. It often involves active listening, politeness, and
treating others as equals.

RESPONSIBILITY



Oughtrington's Core Value

We take initiative, solve problems independently and seek help when necessary. We take responsibility for our behaviour and learning, making positive choices that support our overall wellbeing.

Related Values

Accountability
Loyalty
Independence

Actions that show this value

Home responsibilities
Homework
Taking care of your belongings
Completing schoolwork
Showing respect to others
Goals Setting

Believe in Your Potential

Responsibility builds trust, improves performance, and promotes personal growth. It strengthens relationships by demonstrating integrity and reliability. Taking responsibility empowers individuals by giving them a greater sense of control, confidence, and a more fulfilling life.

What does responsibility look like?

Responsibility looks like taking ownership of your actions and commitments, being accountable for outcomes, and following through on tasks.

HONESTY

Oughttrington's Core Value

We are honest with ourselves and do the right thing even if no-one is around. We are able to tell the truth even when it is difficult.

Related Values

With a growth mindset, you know that challenges are opportunities for growth. Don't be afraid to take on new and difficult tasks. Step out of your comfort zone, set goals, and watch yourself grow.

Actions that show this value

Mistakes are valuable learning opportunities, not something to be ashamed of. With a growth mindset, you see mistakes as stepping stones to success. When you make a mistake, take a deep breath, learn from it, and try again.

Believe in Your Potential

With a growth mindset, you understand that intelligence and talents can be developed over time. Keep pushing yourself, stay positive, and believe in your ability to achieve anything you set your mind to. You have unlimited potential.

What does honesty look like?

With a growth mindset, you know that effort and perseverance are the keys to achieving your goals. Stay determined, work hard, and celebrate the progress you make along the way!

Maths Adventure Day

On Tuesday 20th and Wednesday 21st January, Years 1 - 6 engaged in a fantastic, interactive maths escape room solving a range of problems to retrieve the mystery code. The children showcased brilliant maths skills, communication and teamwork.









Year 3 Stone Age Visit

Year 3 had an incredible day at Tatton Park where they engaged in a variety of Stone Age, Bronze Age and Iron Age activities. They built shelters, explored stone and metal tools, learned how to start a small campfire and listened to a fascinating story about a real stone age person who was found after spending 5000 years frozen on a mountainside! They learnt so much and had lots of fun in the process!





Indoor Athletics

The Year 6 indoor athletics team competed at Birchwood on Wednesday against 8 other Warrington schools. They performed brilliantly and stormed to victory coming away with another gold medal. We had amazing performances in sprinting, speed bounce and long jump events! They are now through to the Cheshire Finals in March competing against schools from across the county.









Postcard Competition

There was a fantastic response to the design a postcard competition with over 180 entries, they were all amazing. Miss Marsland shortlisted the entries and the winners were selected by School Council and Deputy Heads.

A huge congratulations to Penelope F, Hannah M, Annabelle B, Spencer P, Olivia C, Barney S, Theo M, Fracnes R, Theo L, Thomas D, Lara C, Annabelle P, Evelyn N, Oliver W, Dariia K and Sofia T.

The winning entries will be made into professional postcards and each winner will receive a framed copy of their picture.

Well done to you all!



Internet Safety and Parent Workshop

Internet Safety Day

On Tuesday 10th February, Cheshire Police will be delivering Internet Safety sessions once again with our children. They will also be holding an invaluable parent workshop at 2pm-3pm. The session will help parents understand the current online risks and give practical strategies to help keep children safe in an increasingly digital world.

If you would like to attend the workshop, please complete the following Google Form.

Please note that children are not allowed to attend the parent workshop.

<https://forms.gle/2A8JrGs1EDNNrWft9>



ONLINE FADS - SHOULD I BE WORRIED?

We've probably all been hearing "Six Seven" on repeat recently but it's just the latest in a long line of online "fads" that have started coming up in everyday conversation.

Online slang moves fast and there's always a new phrase or joke that suddenly becomes the thing everyone is saying.

The good news is "Six Seven" it isn't offensive or harmful. It's linked to a song and a viral basketball video. These trends aren't unsafe – they're just confusing (especially if you're not sure what they mean).

That being said, it's still worth checking in with your child about the new words and phrases they're using. Children often repeat things because they're popular, not because they understand them. A quick and curious conversation can help you stay in the loop and also gives your child a chance to think about what they're saying.



INTERNET LANGUAGE

Like "Six Seven", there are some other phrases that feel almost like code that children use when speaking. Some common ones include:

- **Sigma** - This is often used online to describe someone "cool". In some spaces, it's linked to negative attitudes about gender, so it's worth asking how your child is using it.
 - **Skibidi** - A made-up word from viral videos/animations. Children mostly use it just to be silly and it doesn't usually have a deep meaning.
 - **Rizz** - Short for charisma, usually meaning charming or good.
- While many of these words aren't offensive, if they start being used to insult someone, exclude others, or encourage negative behaviour, that's when to step in.

"TEACH ME" CHALLENGE

Ask your child to teach about you the new phrases they're using:

- What does it mean?
- Where did it come from?
- When do people use it?
- Who started it?

This works well because it keeps things light, but also helps children realise that they don't always know the meaning behind what they're repeating.

HOW CAN I KEEP UP?

- New phrases and fads come up all the time online. Keeping up with what your child is parroting can be a chore.
- Asking your child about what they are saying is one way to find out, but if you want to understand a phrase quickly, try searching it online and stick to trusted online safety websites for meanings.

Mindfulness and Young People's Mental Health Parent Workshop

On Tuesday 24th February, Warrington's Schools Mental Health Link Team will be holding a workshop for parents from 9-10am at school. The focus of this parent workshop will be 'Mindfulness and Young People's Mental Health.' The workshop will offer information, support, tools and techniques that can be used at home to help support your child with emotional regulation. The session is for adults only. If you would like to attend, please click on the link below to sign up.

https://docs.google.com/forms/d/e/1FAIpQLSd2QFmwBh8x50dvHJqF03um_DwC-InkNGLz-sUHoFIBBRuw-A/viewform?usp=publish-editor

Change of date for Parent's Evening

Our Spring Term parent's evenings will now take place on Wednesday 25th March and Monday 30th March.

St Mary's Church Competition Finalists

Archie and Dariia from year 3 are two of 15 entries from across Lymm schools chosen by St Mary's church in their competition to design a sensory garden. The garden will feature elements of all 15 winners' designs and there will be a great unveiling of St Mary's new sensory garden on Sunday 1st february at 2pm.

Friends and family of the winning children are welcome to attend.

Well done Archie and Dariia!

A huge thank you from the PTA!

This week we have been to collect the cheque from the Rotary Club for the Santa float. Thank you to everybody who helped out

with this. We would like to share with you that from helping out we raised a huge £562!

Let's continue to support them again this year as they always need helpers. 😊

From the PTA

Attendance and Lateness

We have had an increase in the number of children arriving late for the school day, this is causing disruption to the children and delaying the start of their learning. The classroom doors open at 8.50am, we ask that all children are ready to enter at this time and start their day. Thank you.

Important message from Warrington School Meals

Please see the below message sent from Warrington School Meals

Dear parent/carers

Please be advised that the cost of a school meal is set to increase from £3.05 to **£3.20** per meal from 23rd February 2026. This will result in an overall weekly increase of £0.75 per child.

This does not affect children accessing Free School Meals. The government continues to support the universal infant Free School Meals (FSM) project, and this means that all children from reception, year 1 and year 2 will be provided with a school meal free of charge. Any child in years 3-6 can also have a free school meal if you are in receipt of certain allowances. To find out if you are eligible, please visit: <https://www.warrington.gov.uk/freeschoolmeals>*

The council has been subsidising the service over the last few years to try and keep the cost of a meal down. However, increases in food and staffing costs mean that we unfortunately have no option but to increase the price of a school meal.

The three weekly rolling menu detailing each day's main course and dessert, with the additional daily offer of a vegetarian option and jacket potato will remain in place. The school meals service will continue to provide a high-quality service that delivers healthy, nutritious meals, caters for all allergens and dietary requirements, and is served in a safe environment on our school premises. We will continue to offer theme days, treat lunches and inviting families to join children for special lunches through the year.

*If your child is eligible for means tested free schools meals you could also be eligible for other funded support, such as [Household Support Fund](#) (funding for food and utility bills) and [Holiday Activities and Food](#) (summer holiday free activities and food). There are also other financial support schemes available, which you can find on the council website: warrington.gov.uk/localsupportscheme

School Office

If you need to contact the main school office for any reason please do so by either emailing oughtrington.office@thebeamtrust.co.uk or calling 01925 75 2086. Absences should be reported by leaving a message on the absence phone line using the number above. Messages sent via dojo to the office may not be picked up.

Thank you.

UPCOMING DATES

- 3rd February Maths workshop for EYFS parents

- 5th February Year 6 SATs information evening
 - 6th February NSPCC Number Day
 - 9th February Mental Health Week
 - 10th February Safer Internet Day - Online safety session for parents run
 - 13th February Year 6 Young Voices trip
 - 13th February School closes for half term
-
- Please also use the following link: <https://www.oughtringtoncps.co.uk/events>

Clubs

Mrs Impey's Sports Clubs

Girls football Tuesday 3.20pm- 4.15pm EYFS- Year 3 24/2/26- 24/3/26

Boys football Wednesday 3.20pm- 4.15pm EYFS- Year 6 25/2/26- 25/3/26

Running Club Thursday 3.20pm- 4.15pm All year groups 26/2/26- 26/3/26

£15 per child per club.

To book please email: imps40@yahoo.co.uk

Join the
fun at ...

EDSTART
SPORTS COACHING

Oughtrington Primary School

Dodgeball/Mini Games

Wednesday

08.00 – 08.45

Year 1 – Year 6



Book at edstart.org.uk

Follow @edstartsports

FRENCH CLUB AT OUGHTRINGTON



Spring Term 2026

Bonjour !

French will resume after Christmas on Thursday 15th January 2026. Last session for the term: Thursday 26th March 2026.

Time: 3.20pm-4.20pm

Cost for this term: £87.50

Please be advised that places are limited and processed on a first-come, first-served basis.

To register a place for your child or if you require further information, please contact me on 07925 800342 or email me at les_copains@btinternet.com

Joyeux Noël à tous !

A bientôt!

Sabine Power
Les Copains French Clubs

About the French Club

Les Copains is a French club that runs every Monday lunchtime and Thursday after school. We introduce French in a fun way by exploring the language through games and activities. Sessions are designed using detailed lesson plans that are structured to stimulate children's natural enthusiasm for language. At Key Stage Two the focus shifts towards writing skills and grammar although the emphasis remains on learning in a fun and stimulating way.

The Les Copains formula has proved to be hugely popular with children of all ages and ability. It doesn't matter if your child has had no previous exposure to the French language, the programme is designed with a lot of repetition and children soon pick up the basics from the activities.

Our three stage approach to learning begins in pre-school at age 3. It's never too early to introduce a second language, in fact, research has shown the earlier the better.

OUGHTRINGTON PRIMARY SCHOOL

CHESS CLUB



Date:

Fridays

09.01.2026

16.02.2026

23.01.2026

30.01.2026

06.02.2026

13.02.2026

Sadun Soykir

Chesswizardss@gmail.com

Expert chess teacher at:

Lymm HS

Ravenbank PS

Bradshaw PS

Time:

15:20 - 16:20

Students:

*Open to all
year groups*

Fee:

£4

Club venue:

Conference room



Computer Xplorers

Leading the way in
providing tech-based
activities that are both
inspirational and
educational!

Tuesday

BIG BIOME BUILDS!

After School Club



Year 1-3



6 weeks from 24th Feb



3.20pm 4.20pm



£51

Explore the fascinating world of
Minecraft Education, biome by
biome! Unleash your imagination,
build towering structures, explore
and conquer challenges with
fellow gamers.



SCAN!

or visit to find out more-

youtube.com/watch?v=AZ7AcvbebKo



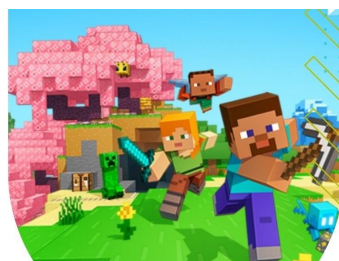
BOOK!

Visit the link or scan the code-
computerexplorers.co.uk/bolton-wigan/asc

Questions? Email us- bolton@computerexplorers.co.uk



@CompXBolton



Computer Xplorers

Leading the way in
providing tech-based
activities that are both
inspirational and
educational!

Thursday Minecraft **BUILD & CODE!** Before School Club



Year 3-6



6 weeks from 26th Feb



7.45am-8.45am



£51.00

*Explore the fascinating world of
Minecraft Education Edition, biome
by biome! Unleash your
imagination, build towering
structures, explore and conquer
challenges with fellow gamers.*



SCAN!

or visit to find out more-

youtube.com/watch?v=AZ7AcvbebKo



BOOK! Visit the link or scan the code-
computerexplorers.co.uk/bolton-wigan/asc

Questions? Email us- bolton@computerexplorers.co.uk



@CompXBolton

OUQHTRINGTON PRIMARY SCHOOL

MORNING TENNIS CLUB

**WEDNESDAYS
8-8.50am**

**Rackets
provided**

email steve@optimatennis.co.uk



Street Dance Club

*Join us for high-energy street dance!
Learn fun moves, build confidence,
stay active, and enjoy dancing with
your friends. All abilities welcome*

Wed 14th Jan -Wed 1st March

3.20pm-4.15pm

Reception-yr 4

£55 (11 week term)

book your place email lizzie.lelouet@yahoo.com

Community Events



Dates:

Tuesday 17th

Wednesday 18th

Thursday 19th

[https://forms.gle/
Q2ZYSqwFZT7j5gJLA](https://forms.gle/Q2ZYSqwFZT7j5gJLA)



follow us @compexplorers



CREATE, CODE AND XPLORE THIS HALF TERM

WARRINGTON

Give your child a head start in the digital world with our

Half Term Tech Club

Providing fun, educational activities-

Tues- Game Design/Code

Weds- Digital Animation

Thurs- Lego Robotics

Including a Minecraft Education challenge each afternoon



Culcheth High School



17th-19th February



9am-3pm



BOOK! Visit the link or scan the code-
computerexplorers.co.uk/bolton-wigan/holidays

GOT QUESTIONS?

Email us bolton@computerexplorers.co.uk

Preparing children for the future



February Half Term

16th - 20th February 2026

Fun Fest Hartford Manor Fun Fest Great Budworth

	AM		PM	
Mon	Under the Sea	Sports Action	Puppet Making	Wacky Races
Tues	Mystical Creatures	Football Camp	Playful Painting	Sports Action
Weds	Jewellery Making	Sports Action	Smelly Mayhem	Fun Fit
Thurs	Sports Action	Creative Cooks	Bench Ball	Lego Adventures
Fri	Crafty Creations	Sports Action	Fun Day Friday	

Book online at www.fun-fest.co.uk

Page 2 / 2

Fun Fest Hartford Manor

Hartford Manor Primary School
Stones Manor Lane CW8 1NU

Fun Fest Great Budworth

Cransley School
Belmont Hall CW9 6HN



Choose fun at



Opening hours 7.30am – 6pm

3 – 12 years welcome from all schools

Ofsted registered, including Early Years

Complimentary breakfast choice for children arriving before 8.30am

Childcare vouchers & tax free scheme accepted

Book your child's space at www.fun-fest.co.uk



16th Feb - 20th Feb

WHAT TO EXPECT:



Snacks and Hot Lunch or Tea available for all children



Sport Based Activities



Physical/Outdoor Activities



Craft Activities



Cooking/Baking Activities



Book Today! 01925 758959 / 07494 744 992 or naturegarden@rngroup.co.uk



Active Families

Active Families – Get Moving, Have Fun!

Tuesday
4.00pm-6.00pm
Starts 13th January 2026

at
Fearnhead Cross Community Centre
Insall Rd, Padgate
WA2 0HD

Join us for Active Families, a fun-filled session designed to help you get active through sports and games.

- Parents/Guardians: Come along with your children
- Teens: Come solo or bring a friend (with appropriate adult consent)

This is a new community-focused way to boost your wellbeing while enjoying time together.

Play, Move, and Thrive! Let's make being active fun for everyone!

- ✓ Free to Join
- ✓ Community-Led
- ✓ For All Ages & Abilities

Sign up today and be part of the movement!
Call us at 07741 291 969 | Email: dhynes@warrington.gov.uk

LiveWire   

Message from SP Energy Networks

As the Distribution Network Operator (DNO) for Lymm, SP Energy Networks own, operate and maintain your power lines and substations. It is our responsibility to keep electricity flowing to the homes, schools, and businesses in your community.

Our work in your area and why it needs to be done

You may have noticed that work has recently begun in the Lymm area. These works are essential to secure the reliability of your electricity supply, future-proofing network capacity for growing electricity demand.

By 2028 Lymm's network is projected to be overloaded and could fail to meet demands as customers connect new technologies such as solar panels and electric vehicle chargers to the network. If overloaded, your network could experience more serious issues later, which would require further work and disruption to your community.

13km of cable replacement is to be laid over the next 6 months, connecting primary substations to secondary substations around Lymm. These new cables will provide capacity far greater than the current needs to future proof the network for years to come.

What we are offering

At SP Energy Networks, we believe it is essential to teach children the importance of safety around electricity – whether that's at home, in school or near worksites. We offer 'Crucial Crew' sessions to schools, lasting around 45 minutes, that include fun, interactive, educational activities.

These sessions are designed to be enjoyable while helping children understand how electricity works and how to stay safe around it.

As we will be carrying out work in nearby areas over the next six months, this is an important time for safety awareness, and we are keen to bring our sessions to your school.

Please let us know if this is something you would be interested in, or if you have any questions

How to stay up to date

Our project information is updated regularly on our [website](#) so we can keep you informed and up to date on the latest news. There will also be regular information sessions with stakeholders to keep you informed of the progress made and any challenges we face.

We look forward to hearing your thoughts,

Thank you

Regards,

SP Energy Networks Stakeholder Engagement Team



Keeping Our Community Connected

The Project

We're delivering a major upgrade to modernise the electricity network in Lymm, so we can meet increasing demands for electricity in a cleaner and greener future.

We are replacing a 13km cable connection to future-proof the local network and ensure a safe, reliable and resilient electricity supply for the region.

Timeline

Works start: January 2026

Stages: The work is being completed in stages to minimise disruption and we have two teams working on the project at the same time for efficiency.

Completion: Summer 2026

Our Commitment

We'll keep you updated throughout the project as it progresses. Look out for regular updates on our website and community meetings.

Join Our Community Webinar

Find out more and ask questions at our webinar.

Date: Monday, 26 January 2026

Time: 18:30 - 19:30

Register to join on our website:

Scan the QR code



www.spenergynetworks.co.uk/lymm



Contact Us

Phone: **0800 188 4481** (between 9am and 5.00pm, Monday to Friday)

Email: lymmreinforcement@spenquiries.co.uk

If you have questions or need support, please get in touch.

Energy Support Information

Hello,

Unity in Community are a charity based in Hull who aim to support the most vulnerable people in society. We were successful in a funding application for supporting people struggling to top up their pre-payment meters across the country. As the cost of living continues to rise, we are aware that many people will be struggling to make ends meet. Unity in Community are able to support households with fuel vouchers; these vouchers are sent via text message. We would like to offer this support to the parents, carers and guardians of students who attend your school.

Help Available - Gas & Electric: Unity in Community will be providing vouchers to help towards paying for gas and electricity. To qualify you must pay for your energy through a **prepayment meter** and have **not received energy vouchers from Unity in Community** within the past 12 months. This is in response to the ongoing cost of living crisis and beneficiaries can be working, unemployed, self-employed or retired. For more information and to register, call **01482 420836**, Monday to Friday, 9am – 3pm – if busy, please keep trying.

We look forward to working with you to support families through a challenging time.

Unity in Community

372 Greenwood Avenue

Hull

HU6 8AP

Tel: 01482852292