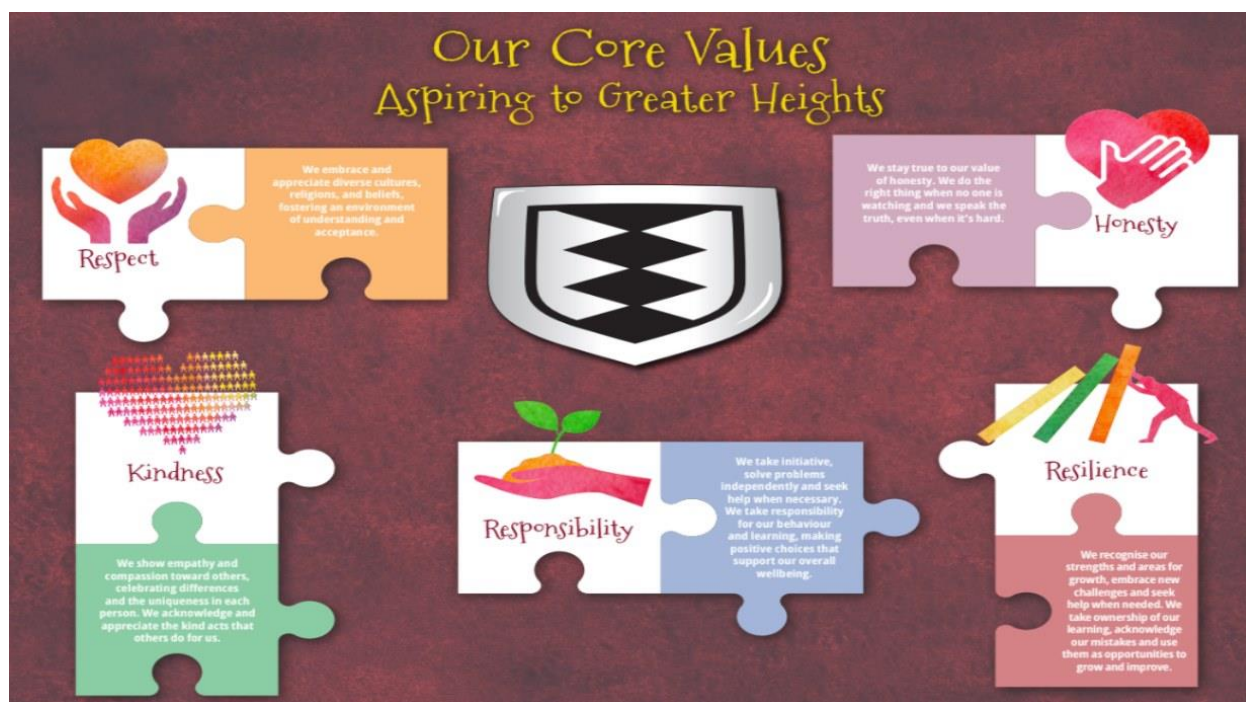




28/11/25

Newsletter Friday 28th November 2025

## Our Values for this half term



# KINDNESS



## Oughtonington's Core Value

We are happy, confident and well-rounded individuals. We have empathy and compassion towards others. We celebrate differences and uniqueness. We recognise the kind acts that other people do for us.

## Related Values

empathy, compassion, generosity, and respect

## Actions that show this value

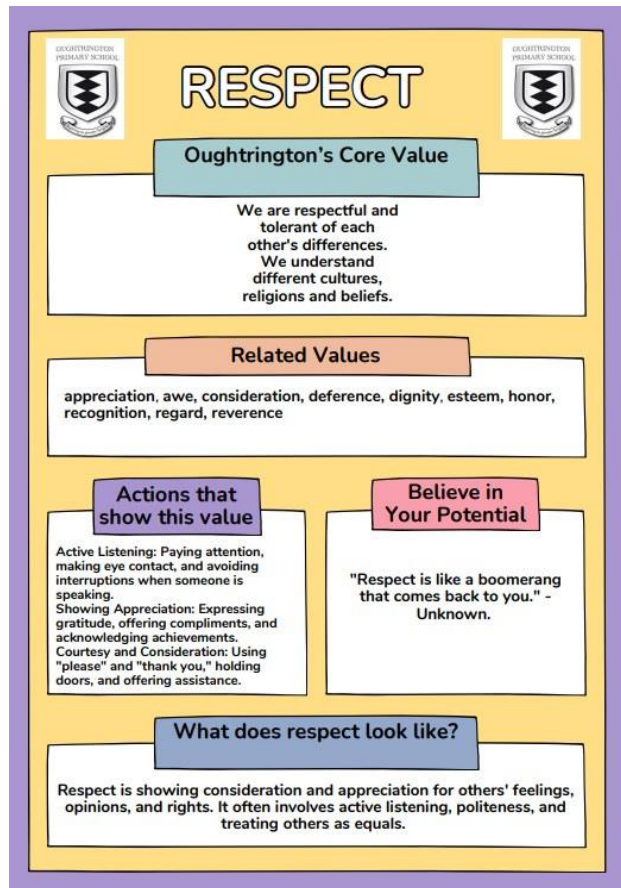
Offering words of encouragement: A simple motivational text or a kind word can make a big impact, especially when someone is struggling.  
Having a positive attitude: Smiling at others and engaging in friendly conversation can create a more positive atmosphere.

## Believe in Your Potential

"We rise by lifting others."  
"It's cool to be kind."

## What does kindness look like?

Kindness is an action, a way of showing compassion and generosity towards others, often involving helping or doing something nice for someone without expecting anything in return. It can be displayed through small, everyday actions or larger, more deliberate gestures.



## Head Teacher

I am pleased to announce that after a rigorous recruitment process we have appointed Mrs. Forrest as the new Headteacher of Oughtrington Primary School from September 2026. I am delighted for Mrs. Forrest and delighted for our school. The recruitment process involved the whole school community - pupils, staff and governors. The interview panel consisted of governors, trustees and myself (in myCEO role). It took place over 2 days - tasks and interviews and Oughtrington governors have ratified the appointment.

Thank you to everyone for their engagement and support throughout the process. The warmth of welcome, the aspiration for our community and how amazing our school is has been evident throughout. I am are sure that you will join me in congratulating Mrs. Forrest.

Miss Gillian Marsland

## Attendance and Lateness

We have had an increase in the number of children arriving late for the school day, this is causing disruption to the children and delaying the start of their learning. The classroom doors open at 8.50am, we ask that all children are ready to enter at this time and start their day. Thank you.

## School Meals

A reminder that school meals for Key Stage 2 children cost £3.05 per day or £15.25 per week. Please ensure that there is sufficient funds on your child's Parent Pay account if they wish to order a school meal. School meals are provided by Warrington Borough Council and not school.

## PTA Events

Breakfast with Santa for Key Stage 2 children is £4.50 and is payable on Parent Pay. Thursday 4th December Years 3 and 4 Friday 5th December Year 5 and 6. If you wish for your child to attend, **please also complete the following Google Form: <https://forms.gle/cZyJ5QQBKrX6vbJq8>**

EYFS and Key Stage 1 children will have 'Story Time with Santa' during the school day on Friday 5th December. This is a free event from the PTA.

The Christmas Fayre is after school on Friday 5th December from 3.20pm. Raffle tickets are available on Parent Pay.





## Lymm Dickensian

**Lymm Dickensian Parade** will take place on **Saturday 13th December**, our theme is **Elves**.

The parade starts at 1.30pm and on the day, **the assembly point is near Brookfield GP Surgery, at the junction of Whitbarrow Road, Danebank Road East and Brookfield Road..** The parade ends at The Golden Fleece Pub and we need an army of Elves!

We would love to see as many families as possible joining Oughtrington for this fun community event.

If you are wishing to take part in the parade, we are looking for 4 willing volunteers to be part of the marshalling team. You will still walk with school but would be required to wear a high-viz vest. If you are interested, please contact the school office. Thank you.





## Elf Run



Our annual Elf Run will take place on Wednesday 17th December. Children are invited to come to school dressed as Elves and they will complete a run around our track. We are raising runs to support St. Rocco's Hospice. Please see the below link to the fundraising page

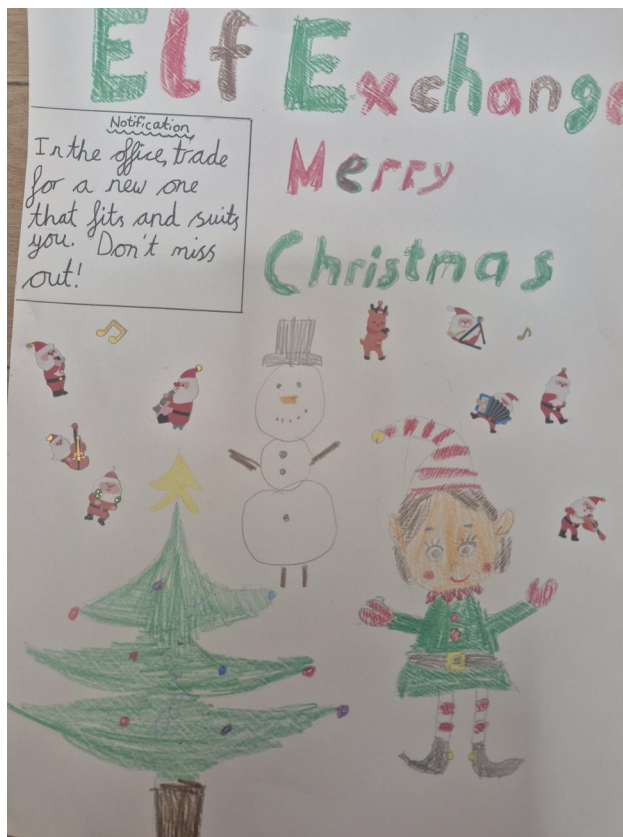
[https://www.justgiving.com/page/oughtrington-primary-2?utm\\_medium=FR&utm\\_source=CL](https://www.justgiving.com/page/oughtrington-primary-2?utm_medium=FR&utm_source=CL)

## School Council Elf / Christmas Jumper Exchange

School Council are excited to announce they will be running the annual Elf costume/Christmas jumper exchange. The aim is to reduce waste, reuse and recycle old items that are no longer needed but still have lots of wear left in them.

If you have any clean items that no longer fit and are able to donate them to school, please bring them to the school office. If you are in need of an Elf costume or a Christmas jumper please come and have a look.

The rail will be available in the main school office from Friday 5th December 2025.



## SP Energy Networks – network modernisation project in Lymm & invitation to drop-in sessions

We have received the following email from SP Energy Networks regarding the above project:

SP Energy Networks owns and operates the electricity network in your region. On **5 January** we will begin a new cable reinforcement project in Lymm which will involve digging sections of



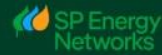
road and footpath to replace a 13km electricity connection. The new 11kV connection will modernise the electricity network in the area, allowing the further rollout of green heating and electric vehicles as demand increases. To carry out the work safely, we will be installing a series of temporary traffic management measures, including full road closures, public footpath closures and temporary rolling traffic lights. The work will be carried out by two teams simultaneously to minimise disruption and will be completed in stages. Work on the Lymm Reinforcement Project is scheduled for completion in **July 2026**. This schedule has been approved by Warrington Borough Council. The first two stages of the work are listed in the tables below. We would advise those attending the school to consider these traffic management measures when planning their journeys. For further information, please see attached letters which we will be sending to local residents in the coming days. These timings are indicative only and are subject to change depending on the progress and requirements of the project. In the event of programme change, we will be in touch promptly to ensure that residents and stakeholders are fully informed. Diversion routes will be clearly signposted and are available to view online at <https://one.network>. We are also hosting two drop-in sessions on **Tuesday 16 December from 13:30 – 14:30 and 18:30 – 19:30 at Lymm Village Hall to discuss the project with residents and stakeholders. We would welcome anyone with questions concerning the project to attend.** Alternatively, our Community Relations Team are available to contact on 0800 188 4481 (between 9:00 am and 5:00 pm, Monday to Friday) or by emailing [lymmreinforcement@spenenquiries.co.uk](mailto:lymmreinforcement@spenenquiries.co.uk).

#### **Schedule of Works Team One – 5 January to 26 February**

#### **Team Two – 5 January to 10 March**

We will be in touch in due course with updates on the progress of the project and the upcoming traffic management measures. Kind regards, **Community Relations Team Lymm Reinforcement Project**

## Future-proofing your network



### Upgrades to your electricity network

SP Energy Networks owns and operates the electricity network in your region. We will soon be carrying out work in your area.

We're investing in the electricity network in Lymm to make sure it's ready for the future, ensuring the local system is ready to meet growing demand for cleaner, greener energy.

#### What's happening in your area

On 5 January we will begin work on **Cherry Lane** and **Elm Tree Road**, later progressing onto **Booths Hill Road**, **New Field Road**, **Moston Grove**, **Daisy Bank Road** and **Barsbank Lane**.

This is the first stage of our work, scheduled for completion in February. The Lymm Reinforcement project is scheduled for completion in July 2026.

All the work being undertaken, along with the associated traffic management plans, have been agreed with Warrington Borough Council.

#### What we're doing

We'll be digging sections of the road to replace old electricity cables, connecting new ones to various points along your network.

You might see us digging and installing new cable ducts – around 25 to 40 metres a day – so we'll be moving on regularly.

**Standard working hours will be 08:00 to 17:00, up to seven days a week.**

#### Keep in touch

For further information please contact our community relations team:

E: [lymmreinforcement@spenquiries.co.uk](mailto:lymmreinforcement@spenquiries.co.uk)  
T: (8am until 5pm, Mon-Fri): 0800 188 4481

To see all street works being carried out in your area, real-time updates are available at:  
<https://one.network/>

#### What to expect

- To carry out our work safely, we will be installing a series of road closures in the local area. A schedule of the works is attached on the following page.
- Clear signs and diversion routes will be in place to keep traffic moving.
- You may not always see activity – sometimes we need to wait for materials to set before continuing.

#### How this may affect you

- Access to homes and businesses will be maintained throughout our work.
- If we're working outside your property, we might ask you to temporarily move vehicles.
- No power cuts are expected during the work – electricity supplies will stay on.

#### Find out more

Want to find out more about our work in your area? We are hosting drop-in sessions on Tuesday 16 December from 13:30 – 14:30 and 18:30 – 19:30 at Lymm Village Hall to discuss any questions you may have.

We're working 24/7 to keep your electricity flowing



### Where we're working

The table below details the roads and footpaths that we will be working on in your area over the coming months and the associated traffic measures. Diversion routes are available to view online via <https://one.network/>

Road	Traffic measures	Start date	End date
Cherry Lane	Road closure	5 January 2026	9 January 2026
Elm Tree Road	Road closure	5 January 2026	23 January 2026
Boothe Hill Road	Temporary Traffic lights	19 January 2026	6 February 2026
Newfield Road	Road closure	2 February 2026	13 February 2026
Moston Grove	Public footpath closure	9 February 2026	13 February 2026
Daisy Bank Road	Road closure	16 February 2026	20 February 2026
Barsbank Lane	Road closure	23 February 2026	27 February 2026

\*These timings are indicative only and are subject to change depending on the progress and requirements of the project. In the event of programme change, we will be in touch promptly to keep you fully updated.

### Thank you

We know roadworks can be disruptive and we're doing all we can to keep inconvenience to a minimum while we complete this important work. Thank you for your patience and understanding.

## Future-proofing your network



### Upgrades to your electricity network

SP Energy Networks owns and operates the electricity network in your region. We will soon be carrying out work in your area.

We're investing in the electricity network in Lymm to make sure it's ready for the future, ensuring the local system is ready to meet growing demand for cleaner, greener energy.

#### What's happening in your area

On 5 January we will begin work on the **Lymm Footpath**, later moving on to **Woodland Avenue & Crescent, Higher Lane and Burford Lane**.

This stage of our work is set for completion in March. The Lymm Reinforcement project is scheduled for completion in July 2026.

All the work being undertaken, along with the associated traffic management plan, have been agreed with Warrington Council.

#### What we're doing

We'll be digging sections of the road to replace old electricity cables, connecting new ones to various points along your network.

You might see us digging and installing new cable ducts – around 25 to 40 metres a day – so we'll be moving on regularly.

**Standard working hours will be 08:00 to 17:00, up to seven days a week.**

#### Keep in touch

For further information please contact our community relations team:

E: [lymmreinforcement@spenergy.co.uk](mailto:lymmreinforcement@spenergy.co.uk)  
T: (9am until 5pm, Mon-Fri): 0800 188 4481

To see all streetworks being carried out in your area, real-time updates are available at: <https://open.network/>

#### What to expect

- To carry out our work safely, we will be installing a series of road closures in the local area. A schedule of the works is attached on the following page.
- Clear signs and diversion routes will be in place to keep traffic moving.
- You may not always see activity – sometimes we need to wait for materials to set before continuing.

#### How this may affect you

- Access to homes and businesses will be maintained throughout our work.
- If we're working outside your property, we might ask you to temporarily move vehicles.
- No power cuts are expected during the work – electricity supplies will stay on.

#### Find out more

**Want to find out more about our work in your area?**  
We are hosting drop-in sessions on Tuesday 16 December from 13:30 – 14:30 and 18:30 – 19:30 at Lymm Village Hall to discuss any questions you may have.

We're working 24/7 to keep  
your electricity flowing



## Future-proofing your network



### Where we're working

The table below shows the roads and footpaths that we will be working on in your area over the coming months and the associated traffic measures. Diversion routes are available to view online via <https://lone.network/>

Road	Traffic measures	Start date	End date
Lymm Footpath	Public footpath closure	5 January 2026	23 January 2026
Woodland Avenue & Crescent	Road closure	19 January 2026	6 February 2026
Higher Lane	Temporary traffic lights	2 February 2026	6 March 2026
Burford Lane	Road closure	2 March 2026	10 March 2026

\*These timings are indicative only and are subject to change depending on the progress and requirements of the project. In the event of programme change, we will be in touch promptly to keep you fully updated.

### Thank you

We know roadworks can be disruptive and we're doing all we can to keep inconvenience to a minimum while we complete this important work. Thank you for your patience and understanding.

## UPCOMING DATES

- Tuesday 2nd December: Y1 Christmas performance at 2pm
- Wednesday 3rd December: Y1 Christmas performance at 6pm
- Thursday 4th December: Breakfast with Father Christmas for Y3 and Y4 at 8.15am
- Thursday 4th December: Story with Father Christmas for EYFS and KS1 children at 9.15am
- Friday 5th December: Breakfast with Father Christmas for Y5 and Y6 at 8.15am
- Friday 5th December: PTA Christmas Fayre at 3.30pm
- Tuesday 9th December: Y2 Christmas performance at 2pm
- Wednesday 10th December: EYFS Christmas assembly at 9.15am
- Wednesday 10th December: Y2 Christmas performance at 6pm



- Thursday 11th December: EYFS Christmas assembly at 9.15am
- Thursday 11th December: Y3 and Y4 Carol concert at St.Peter's Church at 6pm (Confirmed)
- Saturday 13th December: Lymm Dickensian Day
- Wednesday 17th December: Elf Day and Elf Run. Fundraising for St.Rocco's Hospice
- Thursday 18th December: Class Christmas Parties
- Friday 19th December: Christmas Jumper day
- Friday 19th December: Pantomime for EYFS and KS1 children
- Friday 19th December: School Closes at 3.20pm
- Please also refer to our Year Ahead

## Clubs

**A reminder that Street Dance and Drama clubs have now finished until after Christmas.**

3:20-4:15 - £15 Per Term

Girls Football Tuesday -  
Reception- Year 3  
11/11-15/12



Boys Football Wednesday  
Reception - Year 6  
12/11-16/12



Running Club Thursday  
Reception- Year 6  
13/11-17/12



Email  
[imps40@yahoo.co.uk](mailto:imps40@yahoo.co.uk)

**Join the  
fun at ...  
Oughtrington  
Primary School**

**EDSTART**  
SPORTS COACHING

**Morning Dodgeball**

Wednesday  
08.00 – 08.45  
Year 1 – Year 6

**Multisports**

Wednesday  
15.15 – 16.15  
Year 4 – Year 6

For more information, please email  
Alex.speakman @edstart.org.uk



**Book at [edstart.org.uk](https://edstart.org.uk)**

**Follow @edstartsports**



## Gendai Martial Arts

### After – school Class

The sessions will be held at Oughtrington  
Primary School

for Year 3 children and above.

Classes are on Monday 3.15pm until 4.15pm

The first session will be on the 8<sup>th</sup> September and will  
run for 13 weeks,  
with the last session being on 8<sup>th</sup> December

Please note that we do not run on inset days / Sats  
weeks /  
or when the school is closed for holidays.

To register your interest please email –  
[shiptdav@aol.com](mailto:shiptdav@aol.com) .

**All spaces will be on a first come, first served basis  
and will be confirmed back if you have been  
successful in securing a place.**

We would ask that the full payment is paid in advance,  
once confirmed.

**The cost is £5.50 per lesson. Total cost: £71.50**

**Do not make any payment until your place  
has been confirmed**

**There will be an extra cost if your child wishes to go  
for a  
grading at the end of the term (Grading date TBA)**

**Kind Regards Sensei Dave Shipton  
Sensei George Bainton**



## Computer Xplorers

Leading the way in  
providing tech-based  
activities that are both  
inspirational and  
educational!

Tuesday

# BIG BIOME BUILDS!

After School Club



**Year 1-3**



5 weeks from 13th Jan



3.20pm 4.20pm



£42.50

Explore the fascinating world of  
Minecraft Education, biome by  
biome! Unleash your imagination,  
build towering structures, explore  
and conquer challenges with  
fellow gamers.



**SCAN!**

or visit to find out more-

[youtube.com/watch?v=AZ7AcvbebKo](https://youtube.com/watch?v=AZ7AcvbebKo)



**BOOK!**

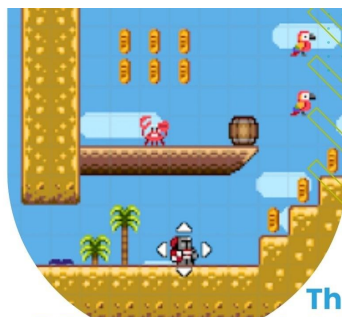
Visit the link or scan the code-  
[computerexplorers.co.uk/bolton-wigan/asc](https://computerexplorers.co.uk/bolton-wigan/asc)

Questions? Email us- [bolton@computerexplorers.co.uk](mailto:bolton@computerexplorers.co.uk)



@CompXBolton





**Computer  
Xplorers**

Leading the way in  
providing tech-based  
activities that are both  
inspirational and  
educational!

## Thursday Morning RETRO VIDEO GAME DESIGN Club



**Year 3-6**



6 weeks from 8th Jan



7.45am - 8.45am



£51

Join us for a unique approach to game-making, where kids can experiment, build, and learn through simple video game creation! Combine creativity, design, animation and logic to create characters, backgrounds, collectables & enemies to complete a fully furnished platform game!



**SCAN!**

or visit to find out more-

[youtube.com/watch?v=s0JiljeYwCY](https://youtube.com/watch?v=s0JiljeYwCY)



**BOOK!**

Visit the link or scan the code-  
[computerxplorers.co.uk/bolton-wigan/asc](https://computerxplorers.co.uk/bolton-wigan/asc)

Questions? Email us [bolton@computerxplorers.co.uk](mailto:bolton@computerxplorers.co.uk)



@CompXBolton

OUGHTRINGTON PRIMARY SCHOOL

# MORNING TENNIS CLUB

WEDNESDAYS  
8-8.50am

Rackets  
provided

email [steve@optimatennis.co.uk](mailto:steve@optimatennis.co.uk)

## FRENCH CLUB AT OUGHTRINGTON



September 2025

Bonjour !

We are now entering the 17<sup>th</sup> year of the French Club at Oughtington. Here are the details for the autumn term.

### KS1 (Reception – Yr2)

French will resume on Monday 15<sup>th</sup> September.  
Last session for the term: Monday 15<sup>th</sup> December.  
Time: 12.20pm-12.50pm  
Cost for this term: £55.25

### KS2 (Written French)

French will resume on Thursday 18<sup>th</sup> September.  
Last session for the term: Thursday 18<sup>th</sup> December.  
Time: 3.20pm-4.20pm  
Cost for this term: £113.75

Please be advised that places are limited and processed on a first-come, first-served basis.

To register a place for your child or if you require further information, please contact me on 07925 800342 or email me at [les\\_copains@btinternet.com](mailto:les_copains@btinternet.com)

A bientôt

Sabine Power  
Les Copains French Clubs

### About the French Club

Les Copains is a French club that runs every Monday lunchtime and Thursday after school. We introduce French in a fun way by exploring the language through games and activities. Sessions are designed using detailed lesson plans that are structured to stimulate children's natural enthusiasm for language. At Key Stage Two the focus shifts towards writing skills and grammar although the emphasis remains on learning in a fun and stimulating way.

The Les Copains formula has proved to be hugely popular with children of all ages and ability. It doesn't matter if your child has had no previous exposure to the French language, the programme is designed with a lot of repetition and children soon pick up the basics from the activities.

Our three stage approach to learning begins in pre-school at age 3. It's never too early to introduce a second language, in fact, research has shown the earlier the better.



## **Street Dance Club**

*Join us for high-energy street dance!  
Learn fun moves, build confidence,  
stay active, and enjoy dancing with  
your friends. All abilities welcome*

**Wed 14<sup>th</sup> Jan -Wed 1st March  
3.20pm-4.15pm  
Reception-yr 4  
£55 ( 11 week term)**

**book your place email [lizzie.lelouet@yahoo.com](mailto:lizzie.lelouet@yahoo.com)**

## **Drama club**

*Join us each week as we  
explore stories, characters  
and creativity through fun  
games, acting activities and  
mini-performances.*



**Tuesday 13<sup>th</sup> Jan- 31<sup>st</sup> March  
Main hall  
£55 (11 week term)  
All years welcome!**



**TO Book email  
[lizzie.lelouet@yahoo.com](mailto:lizzie.lelouet@yahoo.com)**

## OUGHTRINGTON PRIMARY SCHOOL

# CHESS CLUB



**Date:**  
Fridays

**Sadun Soykir**  
Chesswizardss@gmail.com

**Students:**  
Open to all  
year groups

**Expert chess teacher at:**  
Lymm HS  
Ravenbank PS  
Our Lady's Catholic PS  
Bradshaw PS

**Time:**  
15:20 - 16:20

**Fee:**  
£4

**Club venue:**  
Conference room



**KiddyCook**

## Christmas Cooking Class

**Tuesday**  
**9th December**

**3:20pm - 4:20pm**


**£11**

**Class includes:**

- Baking Mince Pie Cinnamon Roll
- Fun festive atmosphere
- A Christmas treat
- All equipment, ingredients & aprons included

**Open to all year groups**

[www.bookwhen.com/kiddycooknorthwest](http://www.bookwhen.com/kiddycooknorthwest)  
Oughtrington Primary School



Classes are very hands-on and each week we'll help your children to create delicious recipes using a variety of skills.

**Term dates**  
Jan 8<sup>th</sup> - April  
2nd


## After-school cooking classes

### BOUGHTRINGTON PRIMARY SCHOOL

#### Thursdays 3:15-4:15pm

Each week, children will make a dish from scratch to take home, along with a recipe card enabling them to recreate their masterpieces time and time again!

Classes last for 1 hour and are booked in blocks per school term. Each block will consist of both sweet and savoury dishes but will always follow the principles of healthy eating.



Ingredients, utensils and aprons provided.  
Wipe-clean recipe card for every session.



**kiddycook.co.uk**

**Contact: Natasha Holdsworth**  
**t: 07774002599**  
**e: Natasha@kiddycook.co.uk**





## AFTERSCHOOL CLUBS

**Why Kiddy Cook is a no 1 choice for afterschool clubs?**

**SMART KIDS EAT WELL!**

Kiddy Cook's afterschool clubs are an easy, fun and engaging way to educate children about food, and is as popular with parents as it is with the kids.

We provide:

- Weekly afterschool clubs for up to 14 pupils.
- All the admin, including letters to parents booking, payments, and registers.
- All ingredients and equipment
- Recipes, conversion charts & skills checklist
- NO OVENS REQUIRED!

**Healthy eating**

Children learn the importance of healthy eating, how to make sugar swaps, and why we need a balanced diet, helping to build a good relationship with food for the future.

**Cooking skills**

The pupils learn important cooking skills, such as rolling, whisking, chopping and grating, which will help them to cook for themselves later in life and develop independence in the kitchen.

**Fun and interactive**

Kiddy Cook afterschool classes are a fun way to end the day. Pupils love being creative, exploring messy play, and sampling new flavours, they book on term after term.

**Something to be proud of!**

Children take home the dish they make, giving them something to be proud of when they show their parents. This develops their confidence, self-esteem and rewards them for their hard work!

**BOOK NOW, LIMITED AVAILABILITY!**

Contact:  
Natasha: 07774002599  
natasha@kiddycook.co.uk

**kiddycook.co.uk**

## Local Community Updates



# Breakfast in Bethlehem

7.30am-12.30pm, Sat 6<sup>th</sup> Dec 2025  
Lymm Baptist Church

**Fun for all the family as we journey through the real Christmas story**

Crafts, dressing up, singing, interactive nativity  
Free entry, no booking required

9.30-10am: Quiet time for those who would value a calmer atmosphere

LBC



Can you help us with donation of new toys/gifts, pyjamas and selections boxes for children & young adults aged 0-18 years?

### DONATIONS ARE NOW BEEN TAKEN AT THE FOLLOWING LOCATIONS

THE GATEWAY	WA1 1SR	MON-FRI 9AM-5PM
GOLDEN SQUARE CUSTOMER SERVICES	WA1 1QB	MON-SAT 9.30-5.50PM, SUN 11AM-5PM, LATE NIGHT THURS UNTIL 8PM
HOWLEY HOTEL	WA1 2JP	MON-SUN 12NOON-11PM
PAVILLION TEA ROOMS	WA1 3GF	TUES-THURS 9AM-2PM
WARRINGTON BOROUGH COUNCIL TIMES SQUARE	WA1 2NT	MON-FRI 9AM-5PM
WARRINGTON TOWN HALL	WA1 1UH	MON-FRI 9AM-5PM
THE ALBION	WA2 7EG	MON-SUN 12NOON-11PM
THE GREENWOOD HOTEL	WA2 0EQ	MON-SUN 12NOON-11PM
THE STATION HOUSE	WA2 7FW	MON-SUN 12NOON-11PM
THE CHESHIRE CHEESE	WA4 1JH	MON-SUN 12NOON-11PM
THE RED LION	WA3 1HE	MON-SUN 12NOON-11PM
THE IRISH CLUB	WA2 7AL	MON-SUN 12NOON-11PM

If you would prefer to make a cash donation this is a link to our just giving page



WARRINGTON  
Borough Council



# TOY Appeal 2025



## Supporting Families in Need This Christmas

**If you are a family who is vulnerable and feel like you need support, we are here to help.**

**Speak to our Community Centre Co-ordinator about how to refer into the service.**

**Alternatively, you can contact:  
Liz Hands, Triage Assessment Worker  
☎ 01925 818017 (Option 4)**

**Let's make this Christmas special for every child in Warrington!**

