



# Year 3 Newsletter

Spring 2 2024

Dear Parents/Carers,

Welcome back to the Spring term! We are learning lots of new and exciting things this term – please see our new timetable and learning objectives for Spring 2. This term we are making it our priority that children are consistently reading at home, it is so important for their learning. We will be closely monitoring children's reading at home, therefore we do ask that reading books are brought to school every day from now on.

**PE/Swimming:** This term year 3 will be continuing PE with Salford Red Devils on a Tuesday, so PE kits are still required to be brought in on a Monday and taken home on a Friday. As well as this, year 3 will also be going swimming this term on a Thursday afternoon. Please ensure children are bringing in their swimming kits every Thursday.

Please take the time to read Miss Wilson's newsletter as it has a lot of information about this term and the school year ahead.

Please feel free to reach out if you have any questions, concerns, or ideas you'd like to share.

Kind regards,

Miss Thorne



@AbbottCommunityPrimary

@Abbott\_CPS

[www.abbott.manchester.sch.uk](http://www.abbott.manchester.sch.uk)

<https://www.abbott.manchester.sch.uk/class/class-3>



Please email with anything you wish to discuss:

[m.thorne@abbott.manchester.sch.uk](mailto:m.thorne@abbott.manchester.sch.uk)

## *Key dates*

- World book day - 7<sup>th</sup> March 2024.
- Year 3 library trip - 7<sup>th</sup> March 2024.
- Red Nose day – 15<sup>th</sup> March 2024.
- Sing around – 27<sup>th</sup> March 2024.



# Class Timetable



## KS2 Timetable: 2023-24 Spring 2



	08:45 - 08:55	08:55 - 09:10	09:15 - 09:45	09:45 - 10:00	10:00 - 10:50	10:50 - 11:05	11:10 - 12:10	12:10 - 12:30	12:30 - 13:15	13:15 - 13:30	13:30 - 14:10	14:10 - 14:20	14:20 - 15:15		
Monday	Registration/Independent Reading for Pleasure		GR	Vocab	Literacy		BREAK	Maths	Whole Class Novel	LUNCH	Handwriting	Music (TD)	BREAK	Spanish	14:50 - 15:10 Head teacher Assembly
Tuesday		Spelling	GR	Grammar & Punctuation	SRD's (PE)	GP S (MT – ECT time)		Maths (MT – ECT time)				Music (TD)		Week 1 & 2 - History Week 3 & 4 – Science & Art Week 4 & 5 – computing & RE	14:50 - 15:10 Singing Assembly
Wednesday			GR		Literacy			Maths				Week 1 & 2 - History Week 3 & 4 – Science & Art Week 4 & 5 – computing & RE		Week 1 & 2 - History Week 3 & 4 – Science & Art Week 4 & 5 – computing & RE	
Thursday			GR		Literacy			Maths				PE (Swimming) MT - PPA		PE (Swimming) MT - PPA	
Friday			GR	Literacy		Maths Inc. Arithmetic		Week 1 & 2 - History Week 3 & 4 – Science & Art Week 4 & 5 – computing & RE				Week 1 & 2 - History Week 3 & 4 – Science & Art Week 4 & 5 – computing & RE		14:45 - 15:10 Celebration Assembly	

# Curriculum Overview

## English

### Alice in Wonderland

- story retell
- dialogue/play script
- instructions
- recount
- comparative report



## Maths

### Unit 7 – Length and perimeter.

Measure, compare, add and subtract:  
lengths (m/cm/mm); mass (kg/g);  
volume/capacity (l/ml)

### Unit 8 – Fractions (I)

Recognise and use fractions as numbers:  
unit fractions and non-unit fractions with  
small denominators.

### Unit 9 – Mass

Measure, compare, add and subtract:  
lengths (m/cm/mm); mass (kg/g);  
volume/capacity (l/ml)

### Unit 10 – Capacity

Measure, compare, add and subtract:  
lengths (m/cm/mm); mass (kg/g);  
volume/capacity (l/ml)

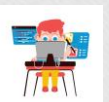
## Science

### Science week!

- I can identify the suitability of materials for a purpose.
- I know some forces need contact between two objects.
- I can use my knowledge of forces to explain how a sailboat functions.
- I can use my knowledge of forces to explain how a paddle boat functions.
- I can create a boat that uses a propeller.

## Computing

Touch typing  
and email.





## History

'How did the lives of ancient Britons change during the Stone Age?'

- **Describe** the ways of life which are typically associated with the Stone Age period of history and **identify** and give reasons for those which are likely to be accurate and those that are anachronisms – simply could not have occurred then
- **Recognise** that the Stone Age in Britain is a period of prehistory which began when the first modern humans arrived in Britain between 850,000 and 950,000 years ago and ended approximately 4,500 years ago with the beginning of the Bronze Age.
- **Describe** and **suggest** reasons for the presence of a small family group of people from the Old Stone Age on a beach in Norfolk and compare and contrast this with how most people use beaches today
- **Describe** and **explain** how archaeologists use a great variety of artefacts, including monuments, to try to understand how ancient Britons lived during the Stone Age

## Art

Cloth, Thread, Paint



## RE

'Why do people pray?'

## Music

- In the Past
- Communication



## PE and swimming

Every Tuesday and Thursday



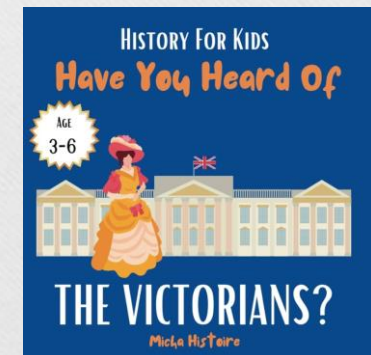
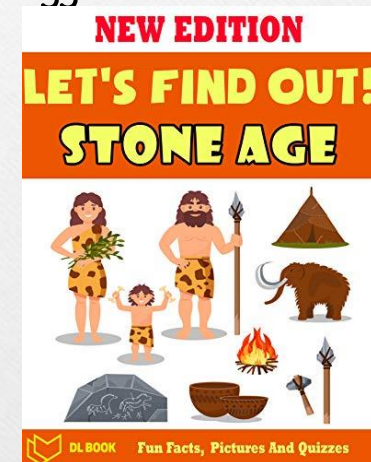
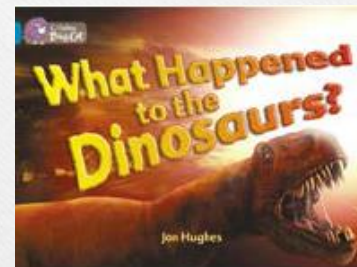
PE Kits **MUST** be brought to school every Monday and taken home Friday. Swimming kits **MUST** be brought in on a Thursday.



# Reading

Children will continue to have independent reading books to take home and they will begin to access the school library. Reading books can be changed ANY day, as needed.

To further support independent reading for pleasure, take a look at the suggestions below that are linked to the topics and authors we are focusing on this half term:



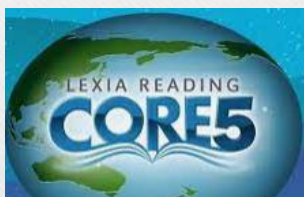
# Home Learning

All homework will be set, on Active learn and Purple mash.  
Your child will have their own log in, in order to access assignments set.

	Day Set	Day Due
Tasks on Active learn, Purple mash and TTRS	Tuesday	Following Monday



Children also have access to online learning platforms that can be used at home.



Homework Club is also available for  
children every Tuesday 3:15pm – 4:15pm