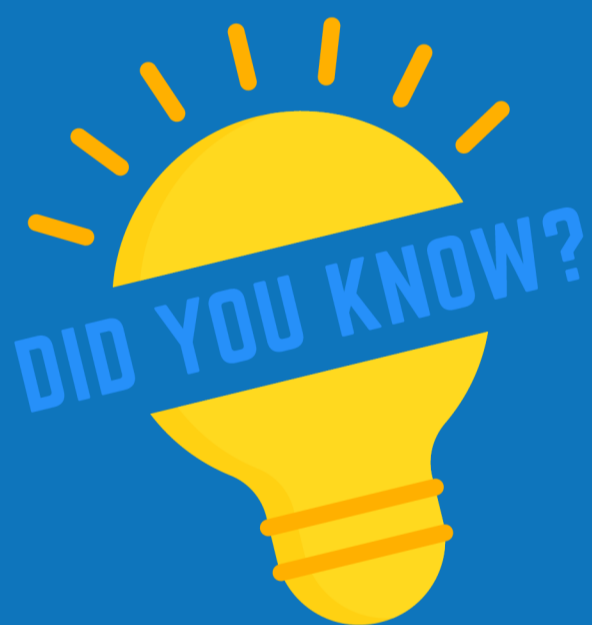
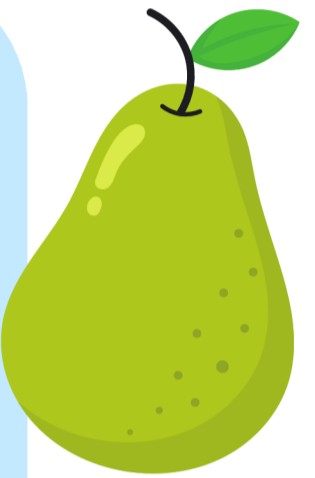




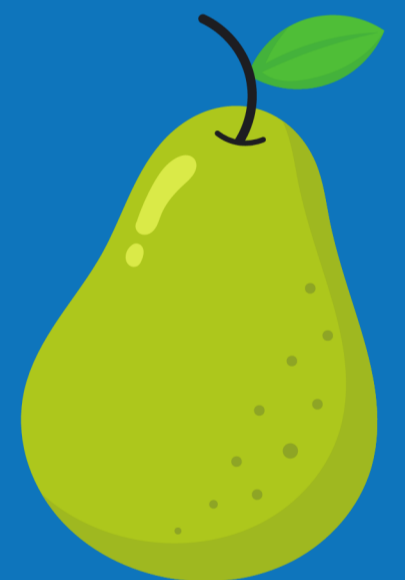
Pear Tree Primary School

Newsletter 30 - 08.05.26

We hope you enjoyed the bank holiday weekend. Although it has been a shorter week this week, we have certainly packed a lot in! It has been great to get back to doing some Forest School sessions and the children have also enjoyed completing activities related to Sir David Attenborough's 100th birthday.



River Families



Each child at Pear Tree is assigned to a River Family. Children wear t-shirts in the colour of their River family on Sports Day. The T-shirts do not need to be completely plain.

The colours are:

Mersey - Orange
Dee - White
Bollin - Green
Checkley - Black
Dane - Yellow
Gowy - Red
Weaver - Blue

Forest School

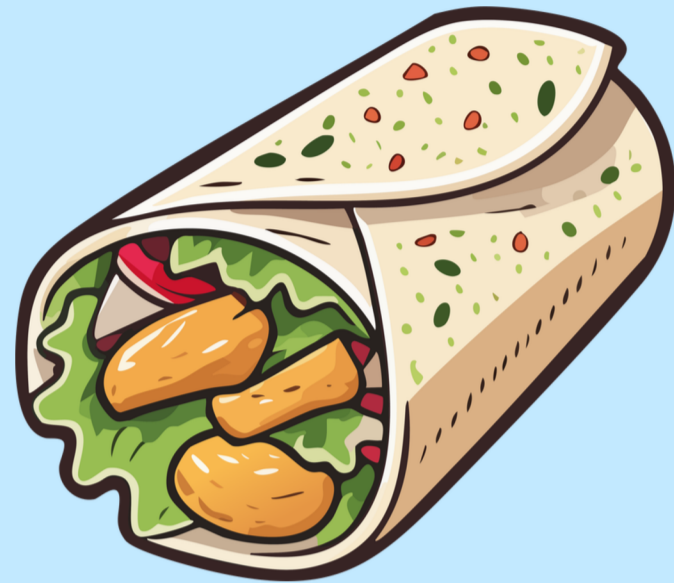
Forest school returned this week and Indigo, Blue and Orange enjoyed some shelter building skills in the forest area.

They had to consider what you needed to survive in the wild!





Yellow Class



Yellow Class have been chefs this week for their DT project...making healthy wraps!

First we explored the concept of a balanced diet and what type of foods our bodies need for different jobs.

We then created taste combinations to try to make sure our wrap designs were not only nutritious but also tasty!

Next we refined our food preparation skills; practising chopping, snipping, grating and spreading.

Finally....we utilised all of those skills to create our wrap from our chosen design.

The children have been brilliant at trying new foods and exploring tastes and textures, as well as being independent with their healthy creations.

Enjoy your wraps after school Yellow Class...you worked hard for them!



Green Class

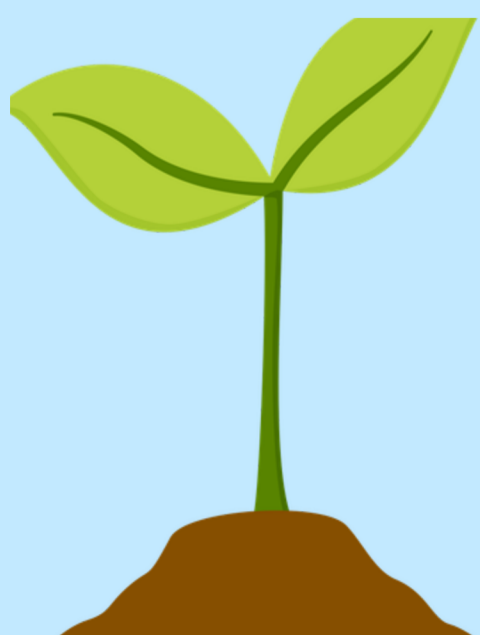


Year 3 have been investigating what conditions plants need in order to grow.

They potted some pansies and decided which plants would receive water, which would go into a dark cupboard, which ones would be in an airtight container, and which ones would be planted in marbles!

The children have enjoyed watering the plants over the week and observing which ones are growing best.

We shall see which ones survive!



SEND AND PINS COFFEE MORNING



Find out more about Cheshire East Parent Carer Forum (CEPCF) and the Partnership for Inclusion in Schools (PINS) Project

Come and join one of our CEPCF reps and meet other parent carers for a chat and coffee.

We will be covering the SEND legal framework and showing the resources on neurodiversity being donated to the school.

09:00 -10:30am
Pear Tree Primary
Tuesday 19th May



OPERATION ENCOMPASS

We are an Operation Encompass School

For further information, please come and see us.



OPERATION ENCOMPASS
In every force. In every school. For every child.

 Pear Tree Primary School

 Cheshire Constabulary

May Half Term

at Nantwich Library

Character Hunt around the Library Tue 26th-Sat 30th

Tuesday 26th

Rhymetime 11-11.30am

Preschool age - Free of charge - Drop-in

Tuesday 26th

Family Board Games - 2-4pm

Families- Free of charge - Drop-in

Wednesday 27th

Drop-in card making 11am-12pm

Ages 0-1 - Free of charge - Drop-in

Wednesday 27th

Baby Bounce 2-2.30pm

Ages 0-1 - Free of charge - Drop-in

Thursday 28th

Rhymetime- 11-11:30am

All ages - Free of charge - Drop-in

Friday 29th

Stories and Songs 11am-11.30

Preschool age - free of charge - Drop-in

Saturday 30th

Saturday Craft 11am-12pm

Ages 4-11 - Free of charge - Drop-in



Explore Nature, Art, Science and Technology across West Cheshire Museums at **Museum Explorers club!**

Come and make some exciting discoveries with us this Spring!

Under the Sea

Wednesday 27th May
11am-12pm & 12pm-1pm



Medieval Mayhem

Thursday 28th May
11am-12pm & 12pm-1pm



Light, Camera, Action!

Friday 29th May
11am-12pm & 12pm-1pm



Booking necessary, £5 per session. To book, pop in to see us or call:

Weaver Hall Museum: 01606 271646

Lion Salt Works: 01606 275066

Grosvenor Museum: 01244 972197



CHILDRENS FREE

CRAFTS

THIS MAY HALF TERM



10:30am - 3:30pm

Tuesday 26th & Wednesday 27th - Coat of Arms @ Grosvenor Museum, Chester

Wednesday 27th & Thursday 28th - Sunset Scenes @ Lion Salt Works, Northwich

Thursday 28th & Friday 29th - Jellyfish @ Weaver Hall Museum & Workhouse, Northwich

LUNCH

W/C 11.05.26

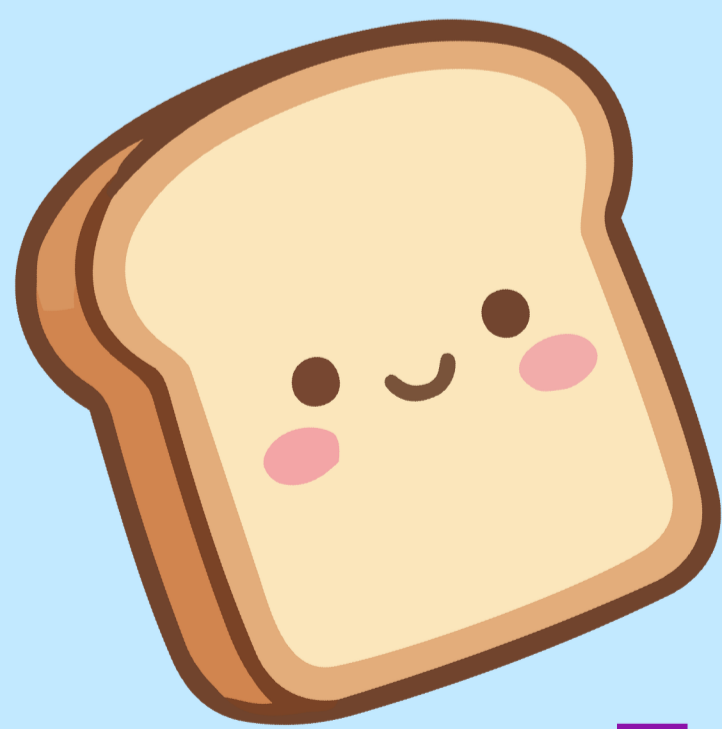
Weeks Commencing 13/4, 27/4, 11/5, 1/6, 15/6, 29/6, 13/7

WEEK 1 MENU

ALLERGIES

Please make us aware if your child has an allergy, so we can cater to their needs and requirements.

	MONDAY	TUESDAY	WEDNESDAY	THURSDAY	FRIDAY
MAIN ONE	Lasagne & Garlic Bread	Sweet & Sour Chicken & Rice	Roast Chicken & Yorkshire Pudding	Bolognaise Pasta Bake	Chicken Nuggets
MAIN TWO	Cheese & Tomato Pizza	Cheese & Leek Slice	Roast Vegan Fillet	Mexican Taco	Fish Finger Bap
THE VEGETABLE PATCH	Steamed Broccoli Potato Wedges	Garden Peas Mashed Potato	Steamed Carrots & Peas Roast Potatoes	Green Beans	Baked Beans or Peas Oven Baked Chips
PASTA BAR	Pasta with Tomato Sauce	Mac & Cheese	Pasta with Tomato Sauce	Mac & Cheese	Pasta with Tomato Sauce
JACKET POTATO BAR	Baked Potato with a choice of topping including Baked Beans, Tuna Mayo & Cheese available daily				
Freshly Made Sandwiches	Ham Egg	Cheese Ham	Cheese Tuna	Ham Egg	Cheese Tuna
GREENHOUSE GREENS	Daily selection of salads, Tomato, Cucumber & Carrot along with Freshly Baked Bread				
SWEET TREATS	A daily selection of tasty desserts including Home Bakes, Jellies & Mousses Selection Of Fresh Fruit & Yogurts				



Toast - 25p

Snack
TIME



Lollies on Friday - £1

IMPORTANT DATES

11.05.26 - 14.05.26 - SATs Week

18.05.26 - Green Class - Chester Zoo

19.05.26 - SEND & PINS coffee morning

01.06.26 - Inset Day

03.06.26 - Orange Class Swimming

11.06.26 - 12.06.26 - Violet Class - Bikeability

12.06.26 - PTA Summer Fair - 4.30-6.30pm

19.06.26 - Sports Day

29.06.26 - Blue Class - Bikeability

03.07.26 - PTA Disco

06.07.26 - Violet Class Residential - London