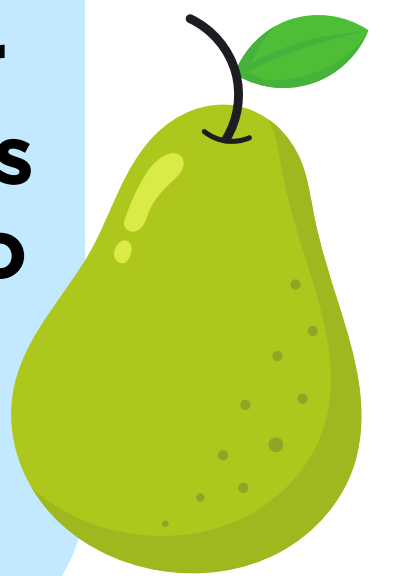




Pear Tree Primary School

Newsletter 14- 12.12.25

What another busy but wonderful week we have had a Pear Tree! Our children have continued to work hard and show us how much progress they have made this term. We have also had some fantastic Christmas performances from all of the children, getting us all in the festive spirit!



Please can we remind our families to park safely and with consideration for other members of the community, ensuring that junctions, drives and pathways are not blocked.



We are thrilled to announce that Mrs Zatrakova gave birth to a beautiful baby girl on Tuesday called Margot Rose. We would like to congratulate them on becoming a family of four and wish them all the best.



Violet Class

Violet Class visited St Mary's Church today, where they sang a selection of carols. They also watched a nativity re-enactment led by The Revd Dr Mark Hart, who helped the children understand the story in a clear and engaging way. It was a simple, enjoyable visit that added to their learning about the season.



Theatre Trips - Lunch

Please note that there will
be a change to the Menu
on the theatre days.
School will be offering
Ham/Cheese/Tuna
Sandwiches



What has the Elf been up to this week?





CHOIR



Our school choir have enjoyed performing Christmas Carols at Nantwich Museum and to a selection of parents. They have been working hard and have enjoyed singing songs such as Joy to the World and Feliz Navidad. We hope they have helped to spread some Christmas cheer!



TOGETHERNESS

Emotional resilience for the everyday

From understanding to thriving: for everyone.

Ideas proven to make a difference for emotional wellbeing and build children's confidence and kindness.

togetherness.co.uk/learn

TOGETHERNESS

Online learning pathways for your parenting journey and important relationships.

For healthier relationships and happier lives

- Antenatal and postnatal learning pathways for the foundations of emotional health
- Children's early development and behaviour
- Special educational needs and disabilities (SEND)
- Adolescence and young people's mental health
- Adult emotional health including trauma

Residents of **CHESHIRE EAST**

In paid partnership with:

For free access, use access code: **WHEATSHEAF**

Learn a musical instrument in school

- Outstanding specialist music tuition
- Learn almost any instrument including voice
- Independently rated an "outstandingly effective service" offering "outstanding value"
- Access to ensembles and performances
- Tutors are DBS checked and first class musicians
- Award-winning not-for-profit organisation with a friendly and efficient team

@Musicforlife1234

@musicforlifesch

@MusicforLifeSCH

www.musicforlife.org.uk

info@musicforlife.org.uk

01244 728 922

Christmas Book Recommendations

Magic and Mayhem

The eagerly-anticipated picture book from Andy Shepherd, author of the best-selling *The Boy Who Grew Dragons* series. Tomas and Lolli love Christmas. And they're not the only ones! Their dragons love Christmas, too. But they have a habit of getting into trouble. When a brand-new snow dragon hatches on Christmas Eve, she unleashes a flurry of snow that transforms their dragon-growing garden into a winter wonderland.

A Festive Adventure

This Christmas Eve a missing reindeer and an impulsive wish upon a star leads Father Christmas on a magical journey into Neverland. But it's amazing what a touch of goodwill and a sprinkling of Christmas spirit can do, even for a plundering pirate like Hook!

Voted Best Children's Book for Christmas 2025

It's nearly Christmas Day when an unexpected visitor arrives – it's Santa, and he needs Sarah's help!

His reindeer are in bed with Antler Flu and without them, he can't deliver his presents on time. But growing well-behaved reindeer isn't as easy as it seems. . . and before long the mischievous creatures have created a rather MERRY MESS!

Pear Tree Primary School
December 2025

LUNCH

Week commencing: 12.12.25

WEEK 1 MENU

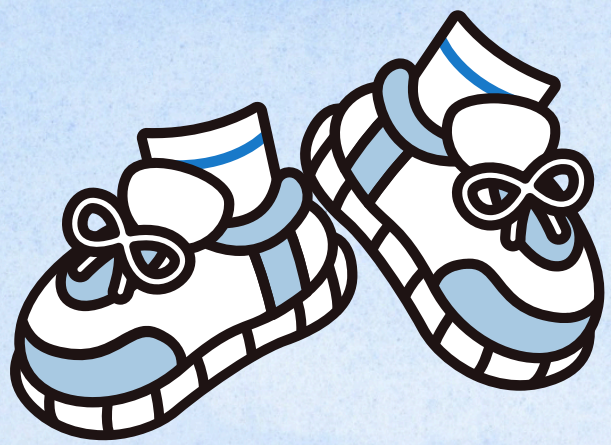
ALLERGIES

Please make us aware if your child has an allergy, so we can cater to their needs and requirements.

	MONDAY	TUESDAY	WEDNESDAY	THURSDAY	FRIDAY
MAIN ONE	Breaded Fish Katsu	Beef Burger	All Day Breakfast	Greek Style Chicken Meatball Flatbread	Crispy Chicken Nuggets
MAIN TWO	Veggie Bolognese Pasta	Falafel Wrap	Quorn Sausage	Vegan Sausage Roll	Fish Fingers
THE VEGETABLE PATCH	Steamed Peas Rice	Sweetcorn Potato Wedges	Baked Beans Mini Hash Browns	Green Beans Paprika Potatoes	Garden Peas or Beans Oven Baked Chips
PASTA & JACKET POTATO BAR	Jacket Potato Beans Cheese Tuna	Pasta & Tomato Sauce	Jacket Potato Beans Cheese Tuna	Pasta & Tomato Sauce	Jacket Potato Beans Cheese Tuna
GREENHOUSE GREENS	Daily selection of salads, Tomato, Cucumber & Carrot along with Freshly Baked Bread				
Sandwiches	Egg Mayo Ham	Cheese Ham	Cheese Tuna	Egg Ham	Tuna Cheese
SWEET TREATS	A daily selection of tasty desserts including Home Bakes, Jellies & Mousses				

AVAILABLE DAILY:

Selection Of Fresh Fruit & Yogurts



PE Days

REMINDER

Class	PE Days
Red Class	Friday
Orange Class	Monday & Wednesday
Yellow Class	Tuesday & Thursday
Green Class	Wednesday & Friday
Blue Class	Monday & Friday
Indigo Class	Tuesday & Thursday
Violet Class	Monday & Thursday

IMPORTANT INFO FOR NEXT WEEK

15.12.25-Elf run - PE Kit for all

16.12.25- Pantomime trip - Blue, Indigo and Violet (uniform)

16.12.25 - Party Outfits suitable for outside play for Red, Orange, Yellow & Green

17.12.25-Christmas lunch/special guest and Christmas Jumper day (with uniform)

18.12.25-Red, Orange, Yellow & Green Pantomime trip (uniform)

18.12.25 - Party Outfits suitable for outside play for Blue, Indigo and Violet

19.12.25-Christmas Jumper day (with uniform)

