



St Margaret Mary's RC Primary, A Voluntary Academy
St Margaret's Road
New Moston
Manchester
M40 0JE

Tel & Answerphone: (0161) 681 1504

e mail: contact@st-margaretmarys.manchester.sch.uk
website: www.st-margaretmarys.manchester.sch.uk

Mr M Sutton, Headteacher

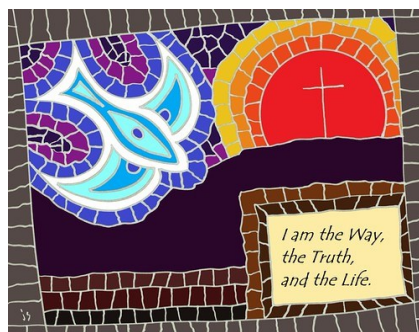
Thursday 7th May 2026

Dear Children, Parents and Carers,

Gospel Reflection:

Last Sunday's Gospel continues to build upon the previous ones we have listened to during this season of Easter. Jesus reassures and comforts the disciples. He asks them to trust in God and trust in Him. He comforts them and tells them there is no need to be afraid. That He is going away to prepare a place for them in His Father's house, where there are many rooms. They are to trust in Him and trust in God. Some of the disciples are puzzled and confused.

Jesus replies by saying; "I am the Way, the Truth and the Life: no one can come to the Father except through me." To know Jesus is to know the Father. To follow his way and know his truth is to enter a life with our Father, in Heaven.



John 14:1-12 I am the Way, the Truth and the Life

Nursery Places 2026 and Wrap Around Care

For all of our families and wider community a reminder that we are welcoming and still have, places available for our September 2026 Nursery intake. Please see the flyer below with additional information, including the expansion of our breakfast club and wrap-around care this year.



Reception and Nursery Places September 2026

For all of our families and wider community a reminder that we are welcoming and still have, places available for our September 2026 Nursery intake, as noted last week, we are expanding our wrap-around care later this year, this includes before and after school.

Are you looking for a full-time school-based Nursery place for your child for September?

If so, then we warmly welcome you to St. Margaret Mary's RC Primary School.

We are committed to fostering strong, caring, supportive relationships with you and your child that will be built upon as we journey through school together.



Within school we can offer full wrap around care for your child, including breakfast club facilities from 07.30a.m. We will offer (from Summer 2026), full after school club provision until 5.30p.m. every day. In addition to this Holiday Club places will be available throughout the year.

Please get in touch with our school office for any enquiries. We warmly welcome visits in person, which can be booked through the office.

0161 681 1504, alternatively, please email:

contact@st-margaretmarys.manchester.sch.uk

Year 6 SATs Examinations

We would like to wish our Year 6 children the very best of luck for their Year 6 SATs examinations next week. They have all worked incredibly hard and we are very proud of them all.

Good luck!

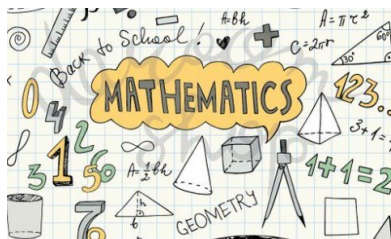


Year 5 Mathematics Competition

A small number of our talented Year 5 mathematicians have been selected to represent St Margaret Mary's at a Year 5 Mathematics Competition to be held at St Matthew's RC High School on Wednesday 20th May.

If your child has been selected you will have received a letter via email.

We wish our children the very best of luck!



School Communication via the School Gateway app

School Gateway, our school app, is the main method of communication we use for parents/carers. It is extremely important that parents/carers download the app onto their mobile telephones as we no longer be sending text messages, which incur a charge to school, going forward. This means you will not receive school messages if you do not have the app downloaded.

If you log into your phone and download the app, which is the image below, we would be most grateful.

Should you need any help with this please do not hesitate to call into the school office.

Schoolgateway



Foundation Governor Vacancies

A reminder that we currently have vacancies for Foundation Governor[s] at the school. If you would be interesting in supporting the school in this important role, please see the attached information sheet from the Diocese of Salford and/or alternatively arrange to speak to myself.

**GOVERNOR
VACANCY**

Look at our great work!

wonderful writing

1/2S explored length and height in their maths learning this week focusing on longer than, shorter than and taller than ...



A huge well done to the children in 3/4D for creating fantastic projects based on their chosen natural disaster ...



Look at our great work!

wonderful writing

The children in 2M were developing fundamental movements such as throwing, running and jumping with increasing accuracy ...



1H planted runner beans in Science and went on a classroom safari to look at the different animals you might see on a safari in Kenya ...





Our certificate winners will be announced on Friday as normal, and we will send the photographs in an email on Monday.

Dates to remember

Monday 11th May 2026: KS2 SATs week

Monday 18th May 2026: Year 6 Residential week

Wednesday 20th May 2026: Year 5 Mathematics Competition at St Matthew's RC High School

Friday 22nd May 2026: School closes for half-term at the normal school finish time of 3.15 p.m.

Monday 8th June 2026: School re-opens after half-term

Tuesday 16th June 2026: "Great Science Share" at University of Manchester

Wednesday 17th June 2026: Boys' football after school at St Matthew's RC High School

Tuesday 23rd June 2026: Year 5 Taster Morning at St Matthew's RC High School

Tuesday 7th July 2026: Year 3 & 4 trip to "Eureka!"

Thursday 16th July 2026: Year 1 & 2 trip to Blackpool Zoo

Tuesday 21st July 2026: School closes for pupils for summer holidays

Wednesday 22nd July 2026: STAFF INSET Day

**DATES TO
REMEMBER**

I hope you all have a lovely, restful weekend when it comes.

Take care and God bless!

Mr Sutton

Headteacher



“Lord, help us to follow your way, live your truth and model our life on yours.”