



Sept  
2022

# Parent Welcome Meeting

Year 2



## Year 2

2022-2023

Mrs McDonald – 2P and Mrs Mackenzie – 2F

Teaching Assistants: Mrs Clarke, Mrs Dearden, Miss Clarke and Miss Heaps

Welcome to Year 2. We are very much looking forward to the year ahead. We look forward to the many exciting experiences and learning opportunities the pupils will engage with over the school year.

Class dojo – is our communication tool. Please use and check this app daily.

Our school rules are **ready, respectful and safe**, we celebrate pupils who follow these rules with our good to be green chart, stickers, certificates, prizes and rewards.

# Meet the team

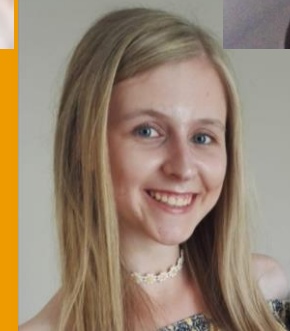
Mrs McDonald - English Pod, Phonics Lead

Mrs Mackenzie - Maths Pod, Lead

Classroom TAs - Mrs Clarke, Mrs Dearden, Miss Clarke & Miss Clarke

Intervention Teacher - Mrs Clarke

Other important staff - Mrs Stevenson, Mrs McHale & Mrs Hardy



# Class groups

Year 2 runs as one cohort of 60 children for Phonics, English & Maths

- Children will move freely move between different groups and different classrooms for their core subjects of English and Mathematics.
- Children will remain in register groups for all creative subjects and guided reading sessions.
- How will we decide which group is best for your child?



# Timetable

PE – Monday and Thursday children to get changed in school.

Theme weeks – Many foundation subjects are taught as a block with our first topic being LS Lowry.

	9.05 9.20	9.25 10.10	10.10 10.25	10.25 10.45	10.50 11.25	11.30 12.20	12.20 1.15	1.15 2.00	2.00 2.15	2.15 3.00	3.00 3.15
Mon	Reading	English/Maths	Break	Phonics	Guided Read	Lunch	English/Maths	2P Gym 2F RE	Break	2P RE 2F Gym	Class Read
Tue	KS1 Assembly	English/Maths		Phonics	Guided Read		English/Maths	2P SPAG 2F Spell/Hand		2P Spell/Hand 2F SPAG	Class Read
Wed	Assembly Attendance	English/Maths		Phonics	Guided Read		English/Maths	Science		Science	Class Read
Thu	Games			Phonics	Guided Read		English/Maths	English/Maths		Times Tables	Class Read
Fri	Celebration Assembly	English/Maths		Phonics	Guided Read		English/Maths	PSHE		Computing	Class Read



# P.E. Kits and Uniforms

## PE Kit

- Plain Yellow/white t-shirt (not polo)
- Black shorts
- Trainers suitable for outdoor sports
- Black jogging bottoms without logo can be worn for outdoor games
- No - Make-up, Jewellery, sock trainers, leggings

Coach Remi



Coach Mat



Sometimes lessons are taught by our specialist sports coaches.

# Homework and Spellings

## Homework & reading books

THURSDAY – sent home

TUESDAY – return to school

### Books

Guided Reading book

Phonics book

Library book

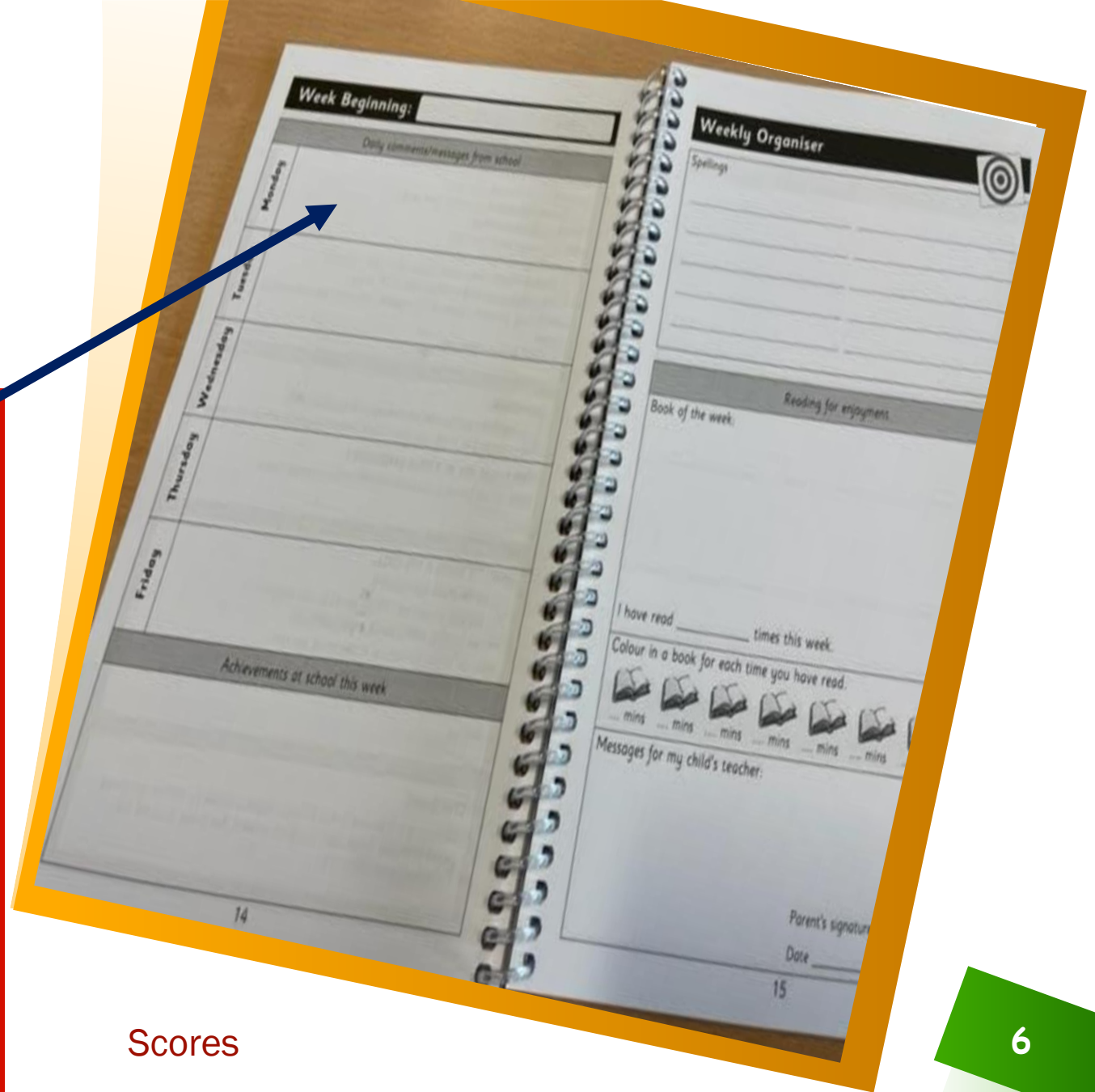
### Homework

Times Tables

Spellings

Reading books

Spellings are given on a Thursday and tested every Tuesday.



Scores

# TTRS

- The expectation for all children to be fluent in all times tables by the end of Year 4.
- In Year 2 our focus is to be fluent in 2, 5, 10 times tables by the end of the year.
- All children have access to TTRS via app or website –logins will be in planners.
- Children should practice as much as possible.





# Spelling Shed

Spelling Shed is the scheme of work we follow for our spellings at Pike Fold.

Children will bring home 10 spellings taken from the scheme which they will have been taught the spelling rule for in school. They will be tested on these words on a Tuesday.

All children have access to Spelling Shed website –logins will be in planners.

Children should practice as much as possible.





# Dojo and Aspens

## Dojo

Please make sure you are connected to Class Dojo and have notifications on!

We will share important information regarding class trips, after-school clubs, interventions and homework on Dojo.

## Aspens

Ordering school dinners on Aspens – Please order food that your children eat at home. We do not want them to be hungry during the school day.



# Behaviour- G2BG

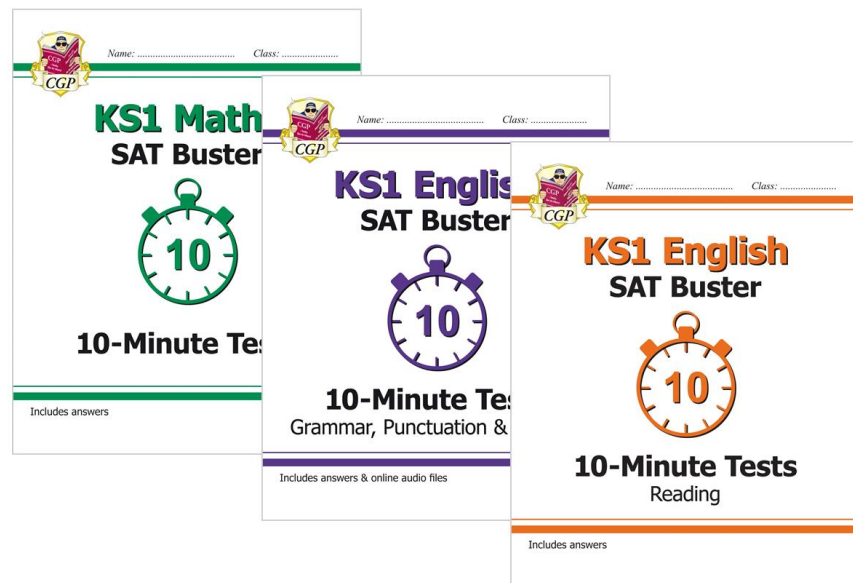


- Enrichment Time
- Loss of playtime



# SATs

Please do not book a holiday  
for this month.



# May 2023





# Long Term Plan

- Please visit our school website to view the yearly overview.
- Carefully planned curriculum

Topic	Autumn	Spring	Summer
Science	Animals and Humans Health	States of Matter	All living things and their habitats
Mathematics	Place Value and Addition	Place Value and Addition	Place Value and Addition
English	U.S. Literacy	U.S. Literacy	U.S. Literacy
History	Medieval	Medieval	Medieval
Geography	U.S. Literacy	U.S. Literacy	U.S. Literacy
Art & Design	U.S. Literacy	U.S. Literacy	U.S. Literacy
Music	U.S. Literacy	U.S. Literacy	U.S. Literacy
Physical Education	U.S. Literacy	U.S. Literacy	U.S. Literacy
Computing	U.S. Literacy	U.S. Literacy	U.S. Literacy
Religious Education	U.S. Literacy	U.S. Literacy	U.S. Literacy
Personal Development	U.S. Literacy	U.S. Literacy	U.S. Literacy
PSHE	U.S. Literacy	U.S. Literacy	U.S. Literacy
French	U.S. Literacy	U.S. Literacy	U.S. Literacy
Spanish	U.S. Literacy	U.S. Literacy	U.S. Literacy
Latin	U.S. Literacy	U.S. Literacy	U.S. Literacy
Classical	U.S. Literacy	U.S. Literacy	U.S. Literacy
Modern	U.S. Literacy	U.S. Literacy	U.S. Literacy
Other	U.S. Literacy	U.S. Literacy	U.S. Literacy

# Parent Pledge

What is a parent pledge?



“The Parent Pledge **sets out a commitment that any child who falls behind in English or maths will get support to help them catch up, and that schools will keep parents updated on their child's progress.** 10 May 2022

- In-class interventions
- Tutoring
- Termly updates
- Greater communication between parent and teacher



# Possible Visitors or Trips

Can you help?

Nurse – Florence Nightingale

Fire – Station, engine, museum

Religion - Church, mosque, temple





*Thank You!*

*Any Questions?*