

WELCOME TO YEAR 2

YEAR 2 STAFF

Mr. Coates

Mrs. Arnold

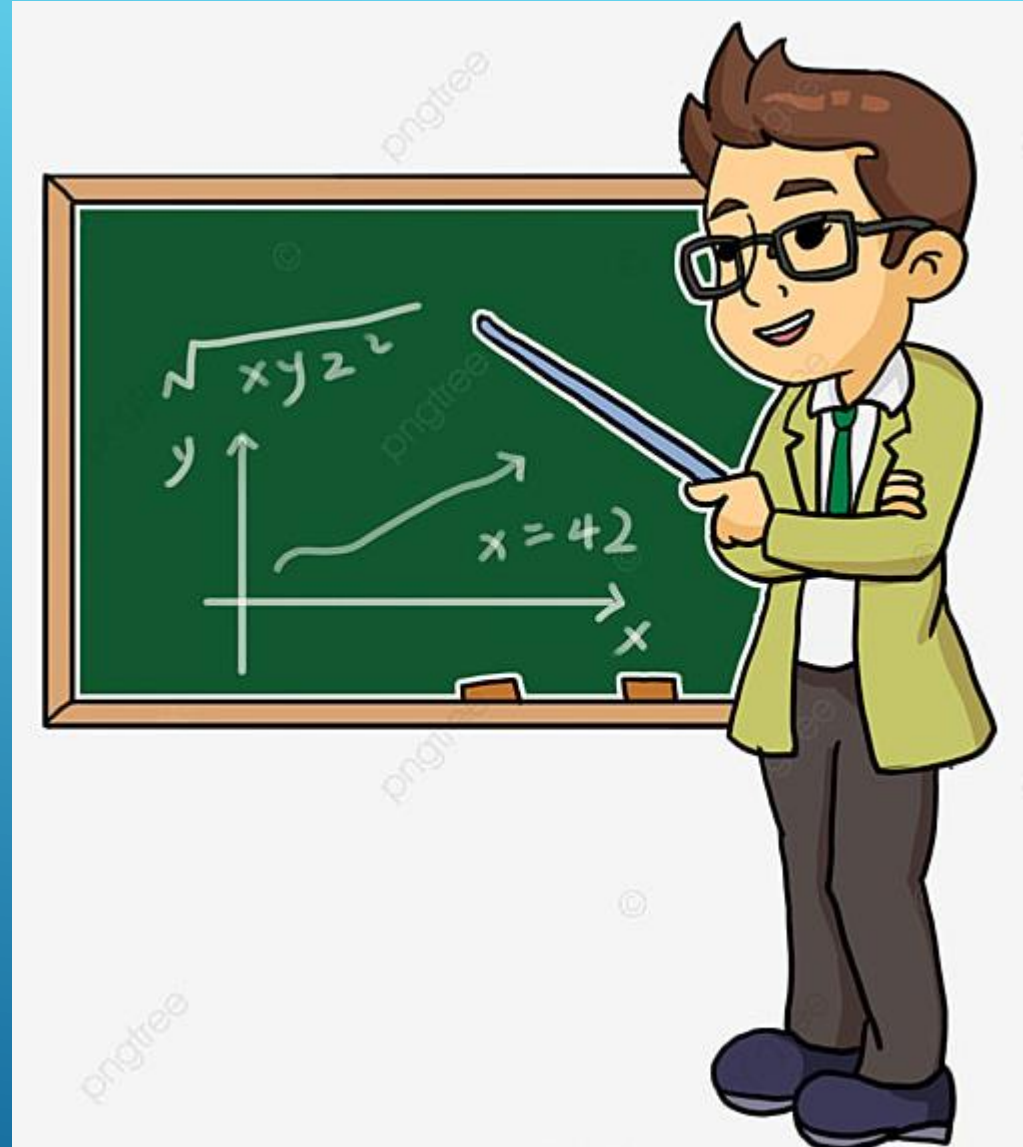
Mrs. Palf

Mrs. Williams

Volunteers:

Ms. Froot

John Wharne



COMMUNICATIONS

School Spider

School Office

X

Year 2 webpage

Newsletter and Topic Web each term



	8:45 - 9:05	9:05 - 9:25	9:25 - 10:30			10:45 - 12:10			1:15 - 2:15	2:15 - 3:00	3:00 - 3:15
M	Starter/Rev & Do	Check ins & review and do	Maths	Whole School Worship	B R E A K	RWInc or comprehension	English & Grammar	L U N C H	PE		
T	Starter/Rev & Do	Rev. Elaine Assembly	Arithmetic	Maths		RWInc or comprehension	English & Spellings		Regulation	Science	S T O R Y
W	Starter/Rev & Do	Class worship	Arithmetic	Maths		RWInc or comprehension	English & PSHE		Regulation	Music	S T O R Y
T	Starter/Rev & Do	Times Tables	Maths	Singing		RWInc or comprehension	English & SPaG		Regulation	History	S T O R Y
F	Starter/Rev & Do	Shine Your Light	Arithmetic	Maths		Reading books changeover	English		Show and tell; spellings and homework	RE	S T O R Y

TIMETABLE

PE – Monday

Forest School – at least once a half term

Writing, Reading, Maths – daily

RE, Science, History/Geography, Music, PSHE – weekly

Computing, Art, DT - across the half term

Assessments – towards the end of each term

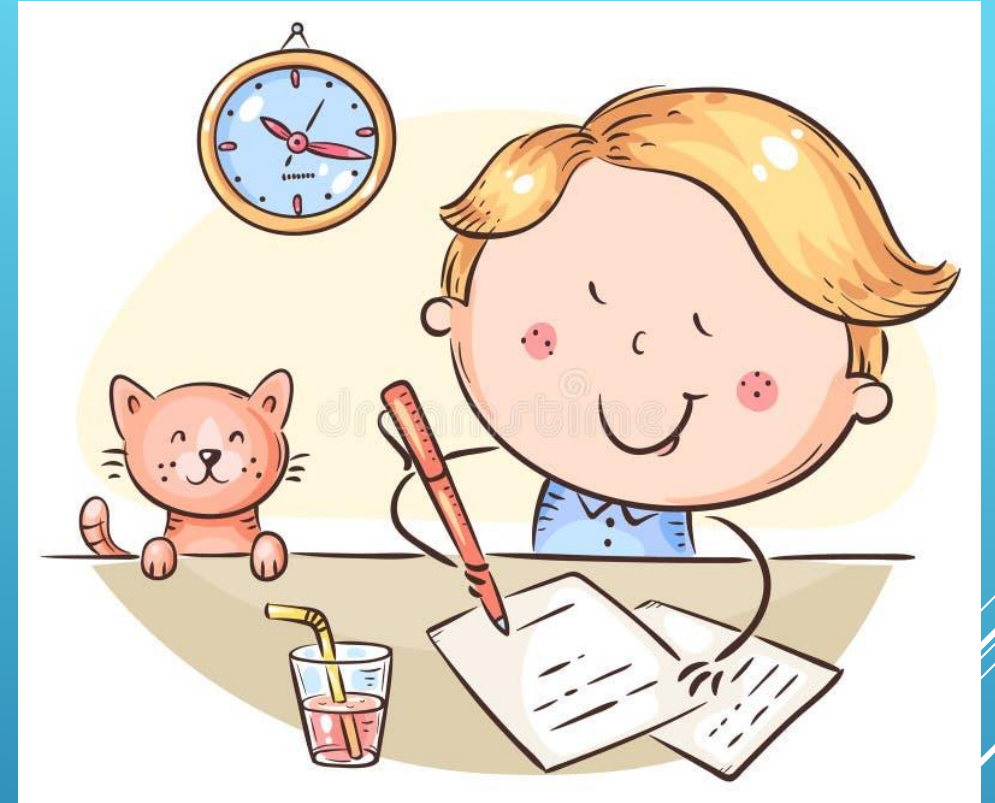


ROUTINES

Reading at home – as often as possible

Times Tables Rockstars - regular

Weekly home work – maths, English, spellings



EQUIPMENT

Water bottles

PE Kit

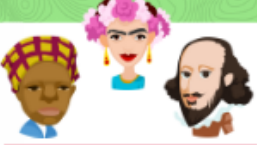

Uniform

Coats

Forest school



BEHAVIOUR

<div>  <h2>Character Strengths Definitions Chart</h2>  <div> AMAZING PEOPLE Schools </div> </div>					
Strengths of the Head How I think	Strengths of Action What I do and how I do it	Strengths of the Heart Using my feelings	Strengths of Community How I relate to other people	Strengths of Meaning Finding purpose and connection	Strengths of Self-regulation How I manage myself
Creativity I can think differently. I can see the world in new ways, making unusual connections.	Courage I am brave and do the right thing. I stand up for what I believe in even when it's hard, or I face disapproval, fear or danger.	Empathy I can understand and can share someone else's point of view.	Adaptability I am flexible. I can adapt my feelings, thoughts and actions to suit the situation.	Appreciation I notice, feel and admire the beauty, skills and efforts all around me.	Forgiveness I can let go of my hurt and anger, wishing others well again.
Curiosity I am inquisitive and want to find out more.	Enthusiasm I am eager and full of energy and cannot wait to take part. Raring to go!	Friendship I am gentle with myself as well as caring, loyal and kind to other people.	Fairness I treat everyone equally without being biased in any way.	Gratitude I am thankful for good things and for what others have done for me. I say thank you.	Humility I have a true understanding of my own strengths and weaknesses. I am humble.
Open-mindedness I enjoy difference and am open to different people and ideas. I consider different options before making a decision.	Integrity I do the right thing even if no-one is watching me, even if it's hard.	Kindness I show empathy, understanding, and care for others. I am kind to myself too.	Leadership I can help or guide others to do something good and get on well with each other.	Humour I see the lighter side of life and make others smile or laugh.	Resilience I can keep going and bounce back from setbacks.
Optimism I see the positives in any situation. I am hopeful and confident about the future.	Perseverance I can persist by sticking at things and not giving up.	Love I care deeply, showing that I care with my thoughts, words and actions.	Teamwork I work well with other people to achieve a common goal. I can take the lead and let others take the lead too.	Wisdom I use good judgement to make sensible choices. I balance my knowledge, experience, thoughts and feelings to help me.	Self-control I am self-disciplined. I can control my thoughts, emotions and actions to live well and reach my goals.

WHAT MAKES YEAR 2 SPECIAL?

The children!

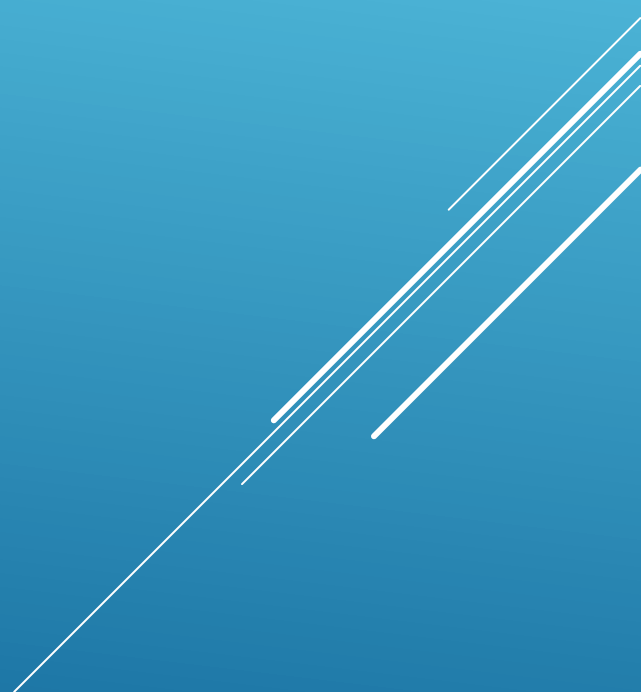
Nativity

Oldest in KS1

Fun subjects

Exciting trips

Fox Howl residential



DIARY DATES

- 26th September - European Day of Languages
- 29th September – Year 2 Class Assembly
- 7th October – 9:30am - Harvest Service
- 9th October – Forest school
- 15th and 16th October – Parents' Evenings
- 17th October – Individual Photographs
- 24th October - 4th November – Half term
- 10th – 14th November – Anti-Bullying Week
- 28th November – Advent Spiral
- 29th November – Frodsham Christmas festival
- 10th December – 2pm – Nativity
- 11th December - 6pm – Nativity
- 17th December - Christmas Party Day
- 18th December – Storyhouse Theatre visit
- 19th December - 5th January – Christmas Holidays

FUTURE DATES

- 10th February – Safer Internet Day
- 13th February – 23rd February – Half term
- 5th March – World Book Day
- 19th and 20th March – Parents' Evenings
- 2nd April – 20th April – Spring Break
- 4th and 5th June - Fox Howl Residential Visit
- 31st March – 9:15am - Easter Service
- 8th May – Class photos
- 22nd May – 1st June – Half term
- 26th June – Sports Day (Reserve: 1st July)
- 17th July – 1st September – Summer holidays

ANY QUESTIONS?



