

The background features abstract, overlapping geometric shapes in various shades of blue, ranging from light sky blue to deep navy blue. These shapes are primarily located on the left and right sides of the slide, framing the central text area.

Year 2 SATs Parent Meeting

What are SATs?

We are required by the government to assess all children against a national framework to establish their attainment towards the end of Year Two. The subjects that we are required to assess are:

- ▶ Maths - tests
- ▶ Reading - tests
- ▶ Writing – SPAG tests plus ongoing teacher assessment
- ▶ Science – no test (teacher assessment only)

The children will be assessed against key objectives from the curriculum which the children have been following since Year One. The results will be given as a scaled score which will result in the children being placed in one of three main categories:

- ▶ Working Towards the Expected Standard
- ▶ Working At the Expected Standard
- ▶ Working At Greater Depth within the Expected Standard

Please note that, for Science, the only category available is 'Working At the Expected Standard' or 'working below' therefore children will simply be assessed as to whether they have, or have not, reached this standard.

Year 2 SATS

Following the Government's response to the 2017 consultation on primary assessment, on 20 July 2022, DfE announced that assessments at the end of KS1 would **become non-statutory** from the academic year 2023 to 2024.

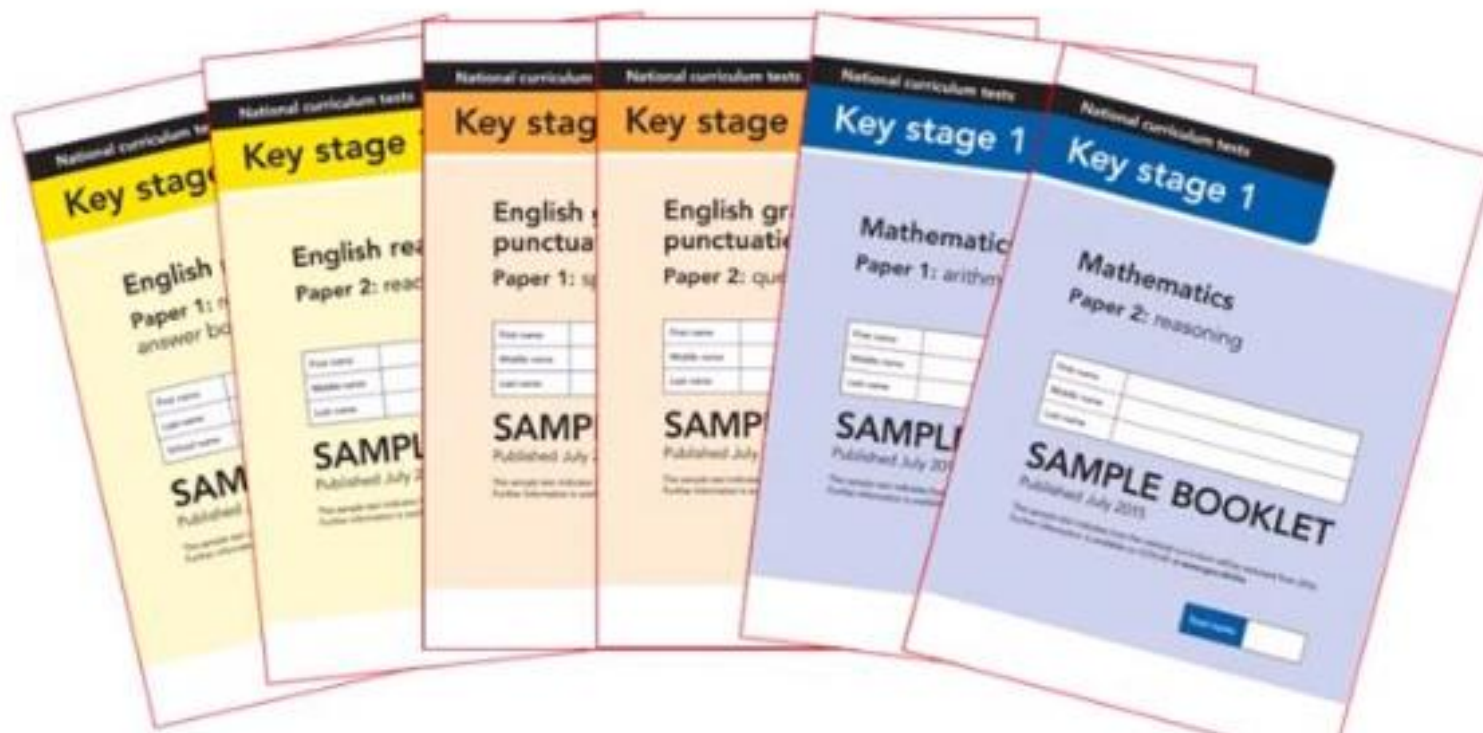
The Standards and Testing Agency (STA) are continuing to develop and supply guidance and materials for optional, end of KS1 tests from the academic year 2023 to 2024. These will include optional tests of English reading, English grammar, punctuation and spelling and mathematics. At Newton – le Willows Primary School, we will be administering these papers in May 2024.

The aim of the optional assessments is to give schools access to test papers to support in the measurement of pupil achievement and to help identify where their pupils need additional support as they transition into key stage 2 (KS2). The tests can also be used to inform teacher assessment judgements using the optional teacher assessment frameworks.

How and when SATs will be completed

- ▶ SATs will run throughout the month of May. They will be completed **between Monday 20th May 2024 and Friday 24th May.**
- ▶ The children will complete the tests in the classroom with the class teacher and other members of staff.
- ▶ Some children may also complete their test as part of a small group or on a 1:1 basis with an adult.

Year 2 SATs booklets...



Reading Paper 1

⌚ 30 minutes approximately

✓ 20 marks

- ▶ Likely to be a mix of fiction and non-fiction.
- ▶ Children to read and answer questions which are either multiple choice or they will be asked to write a short phrase or sentence.

Later questions involve children

- ▶ making inferences.
- ▶ Retrieve by using the text to find the answers.

Bryn got out all his trucks and cars and arranged them in a line. He decided Clare could choose first which to play with, although he couldn't help hoping it wouldn't be the big, blue one.

"I'm glad to see you're tidying up, Bryn," said Dad. "Your room looks much better now."



1 Why did Bryn get out his toys?

Tick **one**.

He was deciding which one to play with. ☐

He wanted to hide them from Clare. ☐

He wanted to tidy them away. ☐

He was getting them ready for Clare. ☐

1 mark

2 What did Dad say looks much better now?

1 mark

Reading Paper 2

- 🕒 40 minutes approximately
- ✓ 20 marks
- ▶ All children will sit a 2nd reading paper which will contain a longer, more challenging texts.
- ▶ They will be given 2 booklets – 1 with the text they'll need to read, 1 with questions in.
- ▶ Likely to be fiction and non-fiction.
- ▶ Questions will focus on 2 main areas of KS1 reading – explaining their understanding of the words they've read and retrieving information from the text.



Questions 1–7 are about *Games From Around the World*
(pages 4–6)

(page 4)

1 Children around the world...

Tick **one**.

do not like playing games. ☐

only play one game. ☐

play many games. ☐

must have very expensive games. ☐

1 mark

(page 4)

2 Find and **copy two** things that could be hidden in *Pilolo*.

1. _____

2. _____

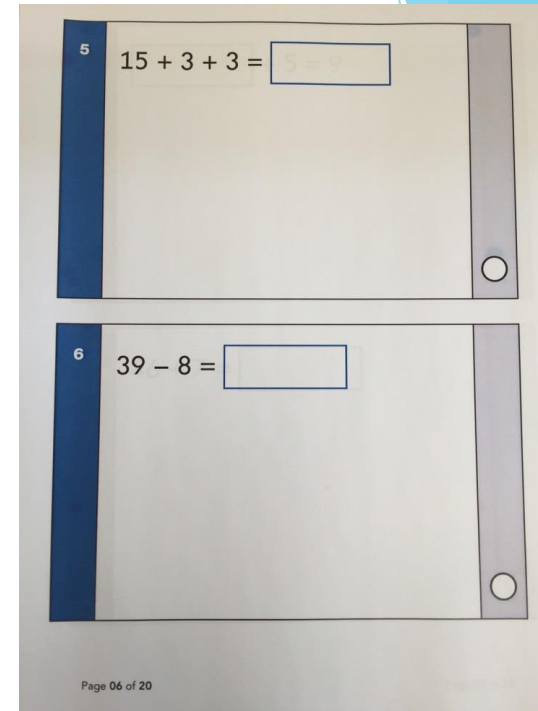
1 mark

How can you help at home?

- ▶ Read your child's school reading book with them each night and ask them questions about the text. Mix it up by asking questions after each page but sometimes at the end of the whole book or chapter.
- ▶ Encourage your child to read anything and everything; sign posts, adverts, magazine/newspaper articles, a recipe book etc.
- ▶ Ask your child comprehension questions about books/stories you have read to them or about films/TV programmes they have watched (see VIPERS poster to help with this)

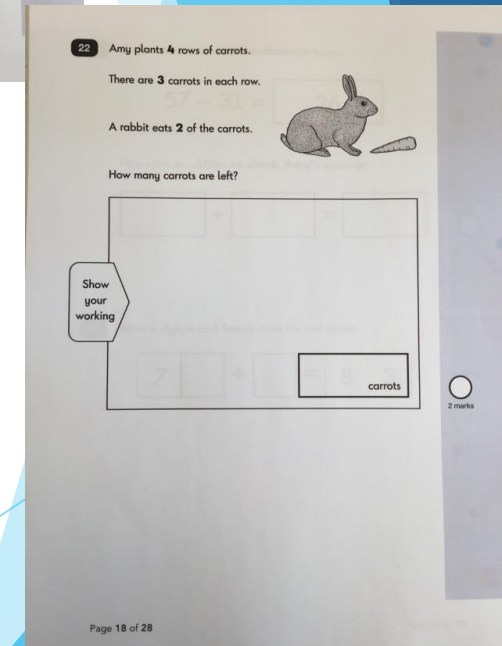
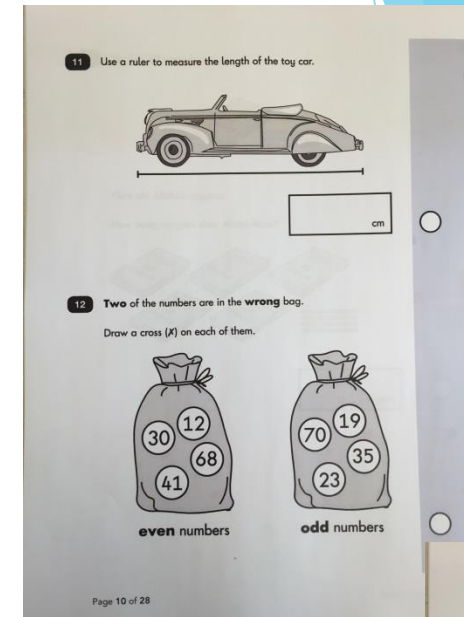
Arithmetic Paper

- ⌚ 20 minutes approximately
- ✓ 25 marks
- ▶ Children are given various calculations to work out with space for jottings
- ▶ The questions rely on children's basic knowledge of number facts.
- ▶ Later questions will involve division and fractions.



Maths Reasoning Paper

- ⌚ 35 minutes approximately
- ✓ 35 marks
- ▶ Each question comes with a context and a drawing or diagram.
- ▶ Questions require either a tick in a box, writing a short answer or selecting an answer.
- ▶ Later questions will require the children to show how they would work out an answer.



How can you help at home?

- ▶ Revise and recall times tables both in order and out of order.
- ▶ Counting in 2s, 5s, and 10s but not always from 0.
- ▶ Addition, subtraction and fractions
- ▶ Real life maths e.g. baking, number lines/scales, shapes, *time and money*

Spelling Paper

- ⌚ 15 minutes approximately
- ✓ 20 marks
- ▶ 20 words from KS1 curriculum.
- ▶ Spellings will be read as part of a sentence.
- ▶ The words get harder as test goes along.
- ▶ The easier ones to start follow spelling patterns.
- ▶ The harder ones require the children to know spelling rules such as the plural of teddy is teddies – take off the y and add –ies.

Spelling

P. There was a big _____ in the garden.

1. Hannah ran _____ than Lee. ☐

2. Yesterday it was very _____. ☐

3. I had a big smile on my _____. ☐

4. There was a large _____ of children at the party. ☐

5. You pick things up with your _____. ☐

6. The _____ in the box are different colours. ☐

7. Our new _____ is black with white paws. ☐

8. I _____ my friend for her help. ☐

9. We are going on holiday on _____. ☐

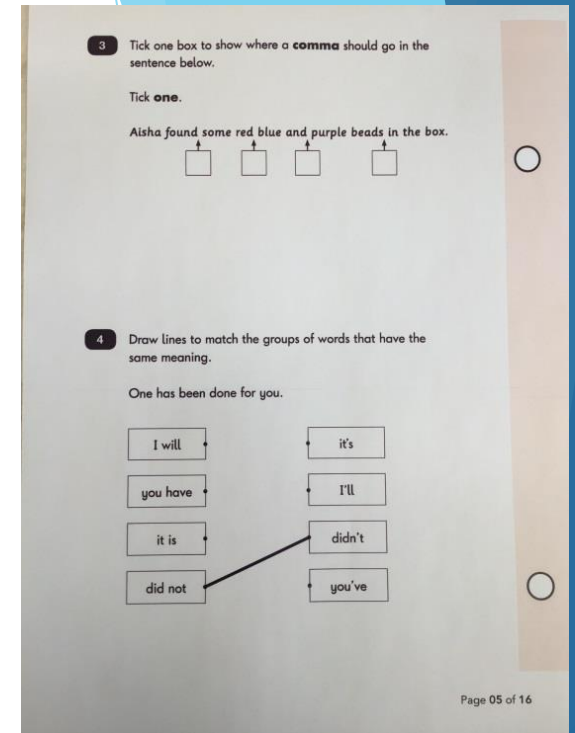
10. I am not allowed to eat too many _____. ☐

Page 02 of 04

Grammar and Punctuation Paper

- 🕒 20 minutes approximately
- ✓ 20 marks
- ▶ Tests various aspects of grammar and punctuation.
- ▶ Children know about verbs, nouns, adjectives, adverbs.
- ▶ Past and Present Tense.
- ▶ Sentence types– command, question, exclamation, statement.
- ▶ Use different types of punctuation correctly.

Combined score from spelling test and Grammar & Punctuation tests are used to aid teachers making a judgement on the children's writing.



Writing and Science

- ▶ Ongoing teacher assessment, no formal tests.
- ▶ End of year judgements will be based on the work completed throughout the year. Judgments will again be moderated by the local authority.

Following on from SATs

- ▶ You will be informed of your child's attainment in their school report at the end of the year.
- ▶ Phonics assessment results will also be found on your child's report if they did not pass the screening in Year 1. Please ask your class teacher if you are unsure if this applies to your child.