



# Year 6 - Converting Units

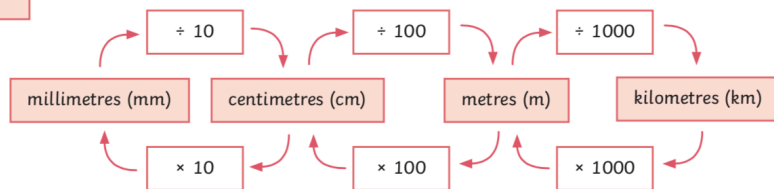
## Metric Measures

### Distance

1000m = 1km  
100cm = 1m  
10mm = 1cm

$\frac{1}{2}$  m = 0.5m = 50cm  
 $\frac{1}{4}$  m = 0.25m = 25cm

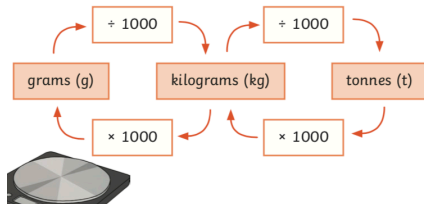
$\frac{3}{4}$  m = 0.75m = 75cm  
 $\frac{1}{10}$  m = 0.01m = 10cm



### Mass

1 tonne = 1000kg  
1000g = 1kg  
 $\frac{1}{10}$  kg = 0.1kg = 100g

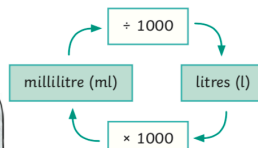
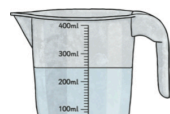
$\frac{1}{4}$  kg = 0.25kg = 250g  
 $\frac{1}{2}$  kg = 0.5kg = 500g  
 $\frac{3}{4}$  kg = 0.75 = 750g



### Capacity

1000ml = 1l  
 $\frac{1}{10}$  l = 0.1l = 100ml  
 $\frac{1}{4}$  l = 0.25l = 250ml

$\frac{1}{2}$  l = 0.5l = 500ml  
 $\frac{3}{4}$  l = 0.75l = 750ml  
 $\frac{1}{100}$  l = 0.01l = 10ml



## Key vocabulary

distance	The amount of space between two points/ objects.
mass	How heavy something is. Different to weight as weight allows for the force of gravity.
capacity	The amount that something can hold.
metric	A modern system for measuring used mainly in the UK. (cm, mm, km)
imperial	An older system for measuring, used mainly in the US. (feet, inches, miles)
milli	One thousandth - a MILLImetre is one thousandth of a metre.
cent	One hundredth - a CENTimetre is one hundredth of a metre.
kilo	One thousand - a KILOgram is one thousand grams.

## Time

**Minute** 1 minute = 60 seconds

**Hour** 1 hour = 60 minutes

**Day** 1 day = 24 hours

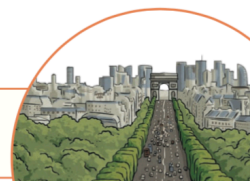
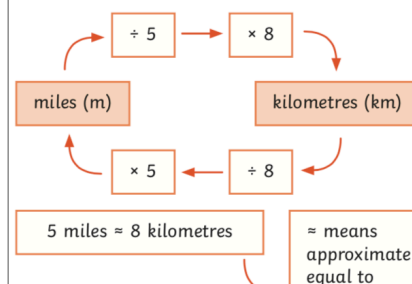
**Week** 1 week = 7 days

**Year** 1 year = 12 months = 52 weeks = 365 days



## Miles to km

You might measure the length of a road or the distance between two cities in miles or kilometres.



## Imperial Measures

1 foot = 12 inches  
1 pound = 16 ounces  
1 stone = 14 pounds  
1 gallon = 8 pints

metric (new)	imperial (old)
2.5 centimetres	1 inch
1 kilogram	2.2 pounds
4.5 litres	1 gallon

