

Stage 6a - Term 3

In Harmony

Key Vocabulary

| | |
|-------------|--|
| Pitch | How high or low a sound is. |
| Clef | Indicates which line or space corresponds to which note. |
| Tonic | The first note of the scale. |
| Triad | A chord of 3 notes stacked in thirds. |
| Tonic triad | A triad where the lowest note is the tonic |

SONGS—Song Set 4

Bravo Bravo

All Things Shall Perish

Birthday Concert Song



Dotted rhythms

Dotted quaver



Rhythm Table

| | | | | |
|--|--|-------------|-----|------------|
| | | Four | 4 | Semibreve |
| | | Two | 2 | Minim |
| | | Ta | 1 | Crotchet |
| | | Ti | 1/2 | Quaver |
| | | Ca | 1/4 | Semiquaver |

D Major

D

C#

B

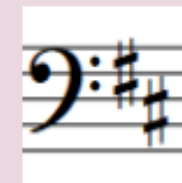
A

G

F#

E

D



G major

G A B C D E F# G

