

# Stage 5b - Term 2

In Harmony

## Key Vocabulary

Musical alphabet semitones	E-F and B-C
Ledger Lines	To go higher or lower than the stave we can add extra lines called ledger lines.

## SONGS—Song Set 4

Tartar Folk Melody



Toora Loora



## 6/8 Composing

1

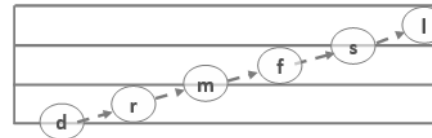
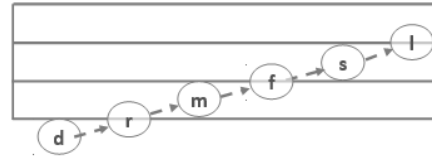
2



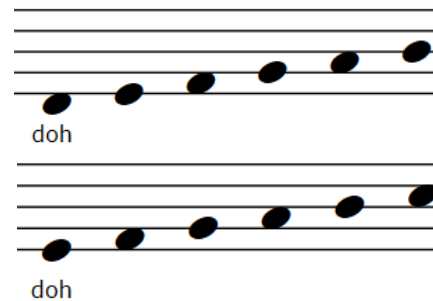
## Sticks and Blobs Level 3&4

drmfsl: Twinkle/ London Bridge

Solfa Reduced Stave:



Five Line Stave:



## Tones and Semitones

C	doh'
B	t
A	l
G	s
F	f
E	m
D	r
C	doh

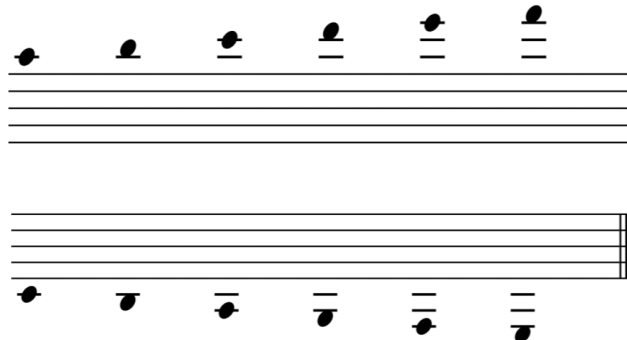
## Ledger Lines

The pattern to get **higher**:

Extra Line + Line Note, Extra Line + Space Note

Extra Line, Extra Line + Line Note,  
Extra Line, Extra Line + Space Note

Extra Line, Extra Line, Extra Line + Line Note,  
Extra Line, Extra Line, Extra Line + Space Note



## Ledger Lines

The pattern to get **lower**:

Extra Line + Line Note, Extra Line + Space Note

Extra Line, Extra Line + Line Note,  
Extra Line, Extra Line + Space Note

Extra Line, Extra Line, Extra Line + Line Note,  
Extra Line, Extra Line, Extra Line + Space Note