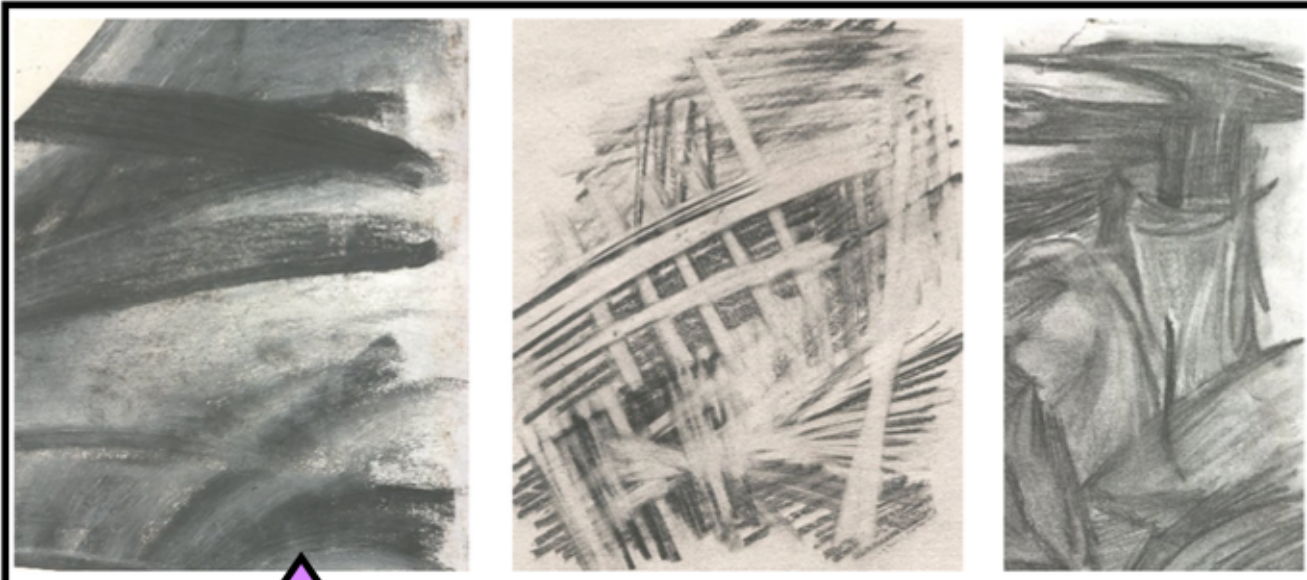
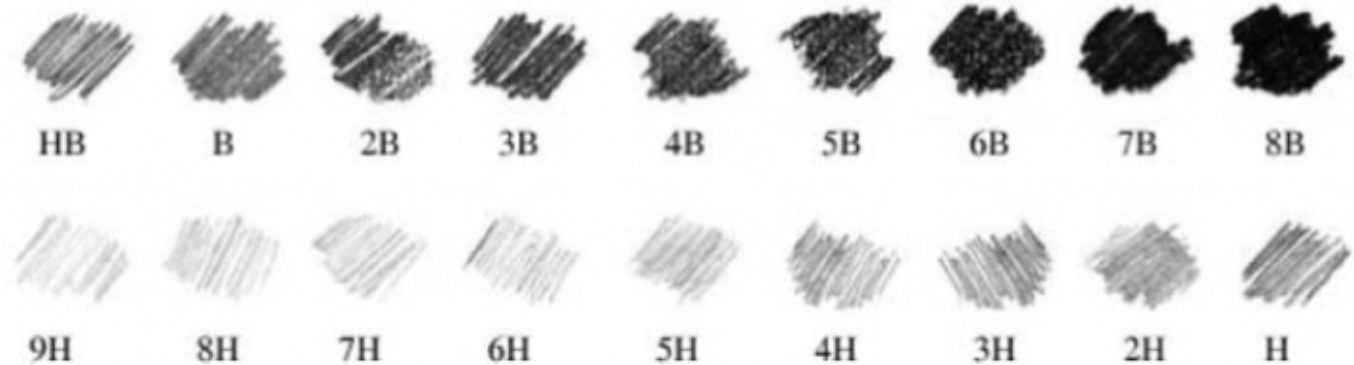


Vocabulary

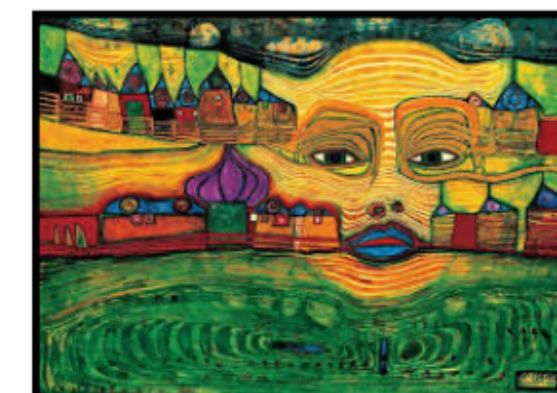
scale	to do with sizing and proportion - how big or small something is
smudge	used to achieve shading - smearing graphite on page
tone	Chiaroscuro - how light or dark the drawing is
line	a mark in art - can vary in width, direction and length, can be straight or curved
layering	using acetate to 'pile up' images and then recreate them as one image
negative	the space around the focus of your drawing OR an effect implemented by removing tone or colour by using a rubber
graphite	a drawing medium found in pencils; graphite varies in
portrait	an artwork that depicts the image of a particular person

Graphite scale - B (black, soft), H (hard)



Working with layering and in the negative, using a rubber to remove marks.

Examples of the artwork of Hundertwasser.



Examples of the work of Frank Auerbach. These drawings are portraits which demonstrate the vigour and strength with which Auerbach draws.