

# KINGSLEY ST JOHN'S CE AIDED PRIMARY SCHOOL PROSPECTUS



## WHO WE ARE

We are a small Church of England school in the heart of Cheshire who have an excellence for personalising learning and supporting pupils to meet their academic potential.

*Believe in the light, whilst you have the light, so that you may become children of light.' John 12:36*

Love; Learn; Aspire; Achieve





# A KSJ WELCOME

Welcome to our wonderful, distinctive and welcoming church school. Here, every child is known, valued, and nurtured as a unique gift from God.

Our school is a place where faith, learning, and friendship come together. We believe in the light within every child and strive to help them discover and shine with their God-given talents. In our classrooms, playgrounds, and worship spaces, children are encouraged to love, learn, aspire, and achieve—supported by dedicated staff and a caring community.

As a small school we enjoy close relationships with families and the wider community. Our children experience the benefits of individual attention, hands-on learning, and a safe, inspiring environment where curiosity and creativity thrive.

Christian values guide everything we do. Our distinctive Christian ethos is woven into our lessons, assemblies, and daily life, fostering kindness, respect, and a sense of responsibility for others. We celebrate achievement in all its forms, encourage resilience, and aim to instill a lifelong love of learning in every child.

*'Everyone at the school works together as a cohesive team'* Ofsted



For me - being a headteacher in a Church of England school is about taking the opportunities to make a difference to our world; To God's World and to find the light in each and every child who grows and flourishes at KSJ.

It is a great privilege to lead this unique and caring school. I strive to lead a school where all staff work in collaboration to ensure the highest possible standards of education.

Alongside the governors, I strive to ensure that there is a personalised approach to the learning and teaching of each individual pupil, so that they can reach their true potential.

Personally, I will leave no stone unturned to ensure that this happens.

I believe very strongly that KSJ is a school family, and take that approach in the day to day running of the school.

*'Believe in the light, whilst you have the light, so that you may become children of light.'* John 12:36

Love; Learn; Aspire; Achieve

# WHY KSJ? WHAT CAN WE DO FOR YOUR CHILD?

## How will my child cope moving from a small school to high school?

Pupils from Kingsley St John's thrive in the high school environment. Our feedback from our local secondary schools show that they are empowered to share their voice, have the confidence and skill to initiate friendships and have developed an understanding of responsibility that enables them to take on leadership roles in secondary school.

## How will my child develop socially in such small cohorts?

In our school, we harness opportunities for collaborative working with pupils in the year above and year below. Aspects of our curriculum are designed to promote collaborative learning and social development. Our strong partnerships with our neighbour schools are utilised effectively so that pupils can know each other and prepare for secondary school together.

In our school, we are one big family. Social networks and webs are developed and harnessed across the school so that every child is nurtured and welcomed into a social environment.

## How can my child learn in such a mixed-age environment? How do they access the full curriculum and high standards?

This is such a strength for Kingsley St John's. Our curriculum is designed across a 2 year rolling programme. In any single year group, there could be pupils working at a very high level and pupils working below the expected standard.

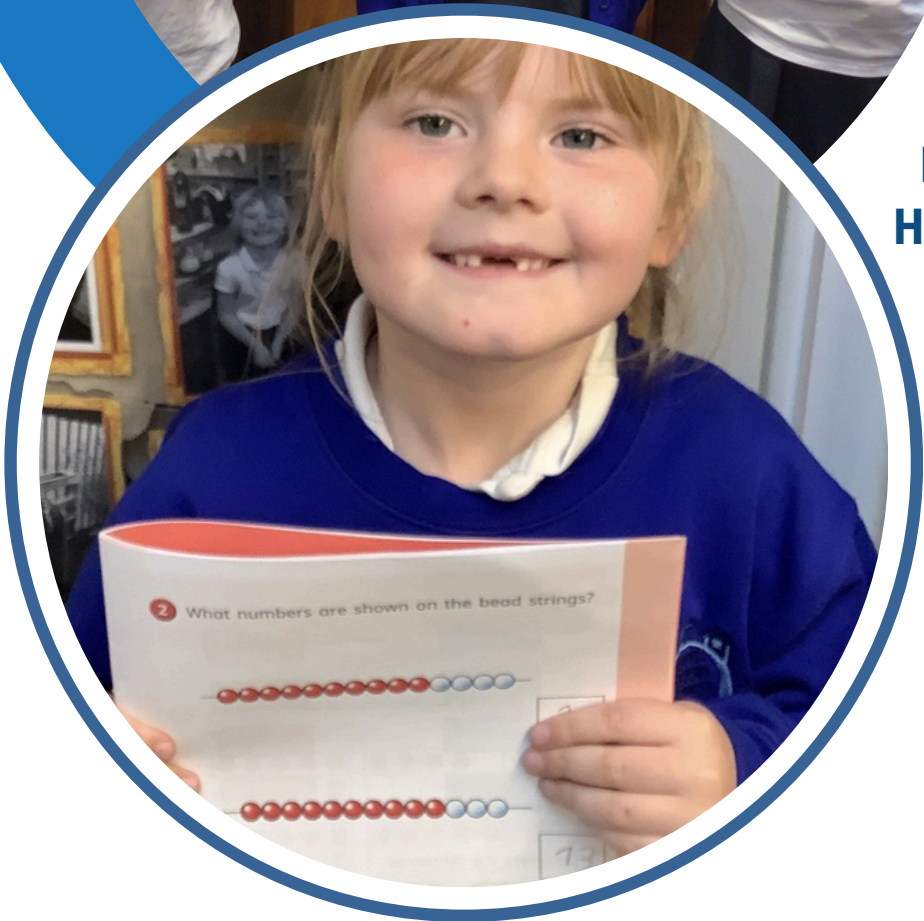
Our highly skilled teachers have a skillset that enables a personalised learning approach for every child. Lesson plans (across the curriculum) are designed to stretch and challenge as well as support individual outcomes. High adult to pupil ratios ensure that outcomes are strong and pupils can attain at the best levels they can be.

## How will attending a church school support my child?

Coming to our small, rural church school is such a valuable and cherished opportunity. As a church school, our staff will treat every child as a child of God, as well as every adult. Our school vision permeates through every action and decision. Our Christian values support your child to develop holistically, as well as academically to be the best they can possibly be. Love; Learn; Aspire; Achieve is our school motto - and the greatest of these is love. You child will be loved, unconditionally when they attend our school.

*Believe in the light, whilst you have the light, so that you may become children of light.' John 12:36*

Love; Learn; Aspire; Achieve



# CHRISTIAN VISION AND VALUES

At Kingsley St John's, we are a fully inclusive Christian school, where we believe in the light of each of God's children.

We nurture every child to believe in their own light and to recognise and celebrate the light in others. Rooted in faith, we care deeply for every member of our school family.



From the moment you step into our school, you experience our distinctive Christian ethos: A place filled with love, joy, and learning, where signs and symbols of faith reflect our shared identity.

In all that we do, our Christian character guides us to seek the very best outcomes for every child.

We believe wholeheartedly that each child deserves a pathway to reach their God-given potential and to live life in all its fullness (John 10:10).

As part of our vision, we aspire for all God's children at Kingsley St John's Primary to:

## **Love - Learn - Aspire - Achieve**

We live out this vision by supporting and encouraging one another, knowing that love comes first—for when we love and are loved, we can learn deeply, dream boldly, aspire faithfully, and achieve fully. Christian values guide everything we do. Our distinctive Christian ethos is woven into our lessons, assemblies, and daily life, fostering kindness, respect, and a sense of responsibility for others. We celebrate achievement in all its forms, encourage resilience, and aim to instill a lifelong love of learning in every child.

Our Church link with the NCK Benefice is a very important relationship in the life of Kingsley St John's.

Together - in union - we nurture this relationship



*'Kingsley Saint Johns is an oasis of hope.'*  
SIAMs 2019

*'Believe in the light, whilst you have the light, so that you may become children of light.'* John 12:36

Love; Learn; Aspire; Achieve

# A KSJ CURRICULUM PERSONALISING LEARNING

The teaching of Christian Values is embedded throughout our curriculum and an integral part of our school day. Personalising learning is a fundamental aspect of learning and teaching at Kingsley St John's CE Primary.

## LOVE

Together, as KSJers, we foster a LOVE of learning – for all God's children. No-one in our school is afraid of making mistakes – this is seen as part of the learning process. Building resilience is a key skill within our curriculum offer and delivery.

## LEARN

Our school curriculum is well thought-out and built to ensure a broad and balanced programme from which to LEARN. Throughout the school year, there will be whole-school themed skill weeks with a focus on developing key skills in an identified curriculum area, or specific curriculum days.

## ASPIRE

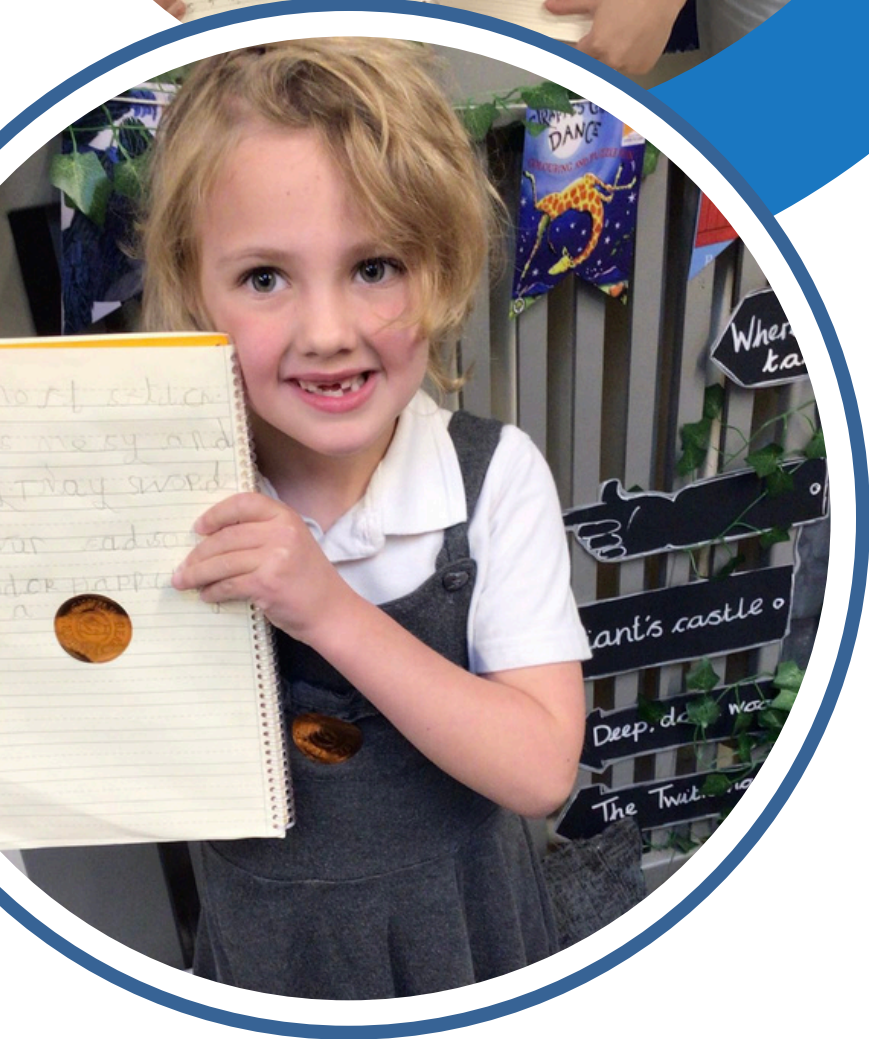
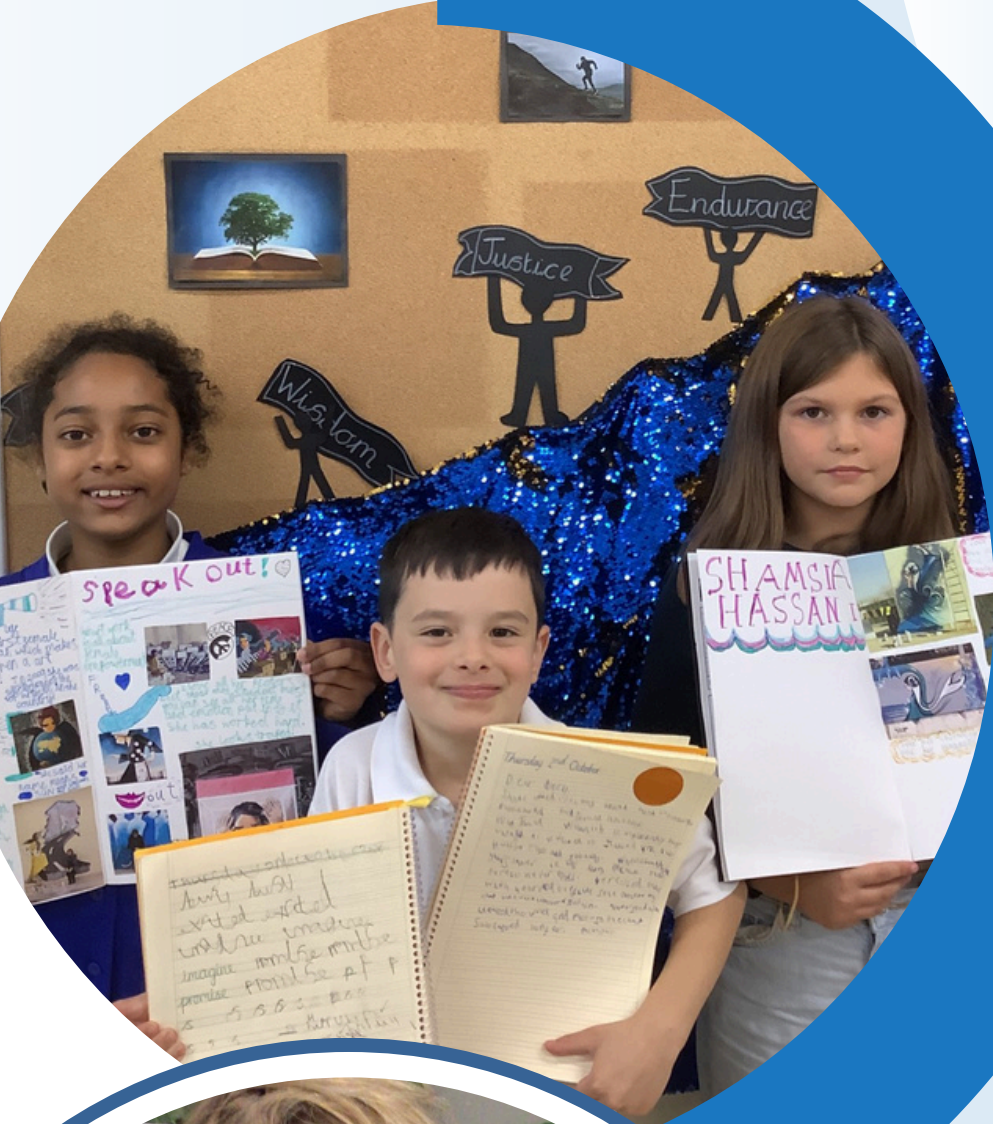
ASPIRE our children to strive to do their best, reach their potential and approach their learning in a manner that is best for their unique selves. Children need to discover their own light (talents, skills and values) and nurture, embrace, celebrate and share them.

## ACHIEVE

Children at Kingsley St John's CE Primary, without exception, flourish and celebrate what they ACHIEVE. We believe in executing the highest standards in all areas of development for our pupils. This is why a significant aspect of our value for money outcomes are used to ensure the highest standards of teaching and learning.

*'Believe in the light, whilst you have the light, so that you may become children of light.'* John 12:36

Love; Learn; Aspire; Achieve



# THREE YEAR OLD NURSERY

Our nursery is part of our Foundation Stage and our pre-school children benefit from learning alongside their friends in Reception. We take children from 3 years old into our Little Wrens class and the provision is led by our Early Years lead, Mrs Gibson .

Our pre-school Little Wrens learn in our stimulating environment both inside and outside the classroom and make the most of our beautiful grounds here at Kingsley. We are very lucky to have a qualified Forest School teacher in Mrs Raynor and our pre-school Little Wrens take advantage by learning outdoors in our Forest School area.

We understand that taking those first steps into school can be daunting for both parents and children .Staff work hard to ensure that from those first tentative moments until they leave us at Y6 our children (and parents!) feel part of our school family ,where they are nurtured, supported, celebrated, challenged and enabled to be the very best they can be.

We accept both full and half day sessions and more information can be found by contacting Mrs Bennett in the office:

## **We offer:**

- Play-based learning focused on the Early Years Foundation Stage (EYFS) curriculum.
- Activities that support early literacy, numeracy, communication, physical, and social development.
- Carefully planned provision to spark curiosity and independence.
- Teachers and teaching assistants who are trained in early childhood education.
- Strong relationships with families and good communication about each child's progress.
- A safe, stimulating, and well-resourced classroom and outdoor area.
- Emphasis on personal, social, and emotional development—helping children feel secure and confident.
- Children ready to move seamlessly into the school's Reception class, with familiar staff and routines.

*"Children in early years settle in quickly and get off to a good start because they are well taught and looked after."*

*"The leader responsible for early years is a skilled and knowledgeable practitioner."*

Ofsted

## **Flexible Hours and Funding**

- 15 or 30 hours free childcare per week (depending on parent eligibility).
- Options for morning, afternoon, or full-day sessions.
- Wraparound care (before or after the school day) in some cases.

*'Believe in the light, whilst you have the light, so that you may become children of light.'* John 12:36

Love; Learn; Aspire; Achieve



# EARLY YEARS FOUNDATION STAGE

In our Reception class, we follow the statutory EYFS framework, which promotes development across the seven areas of learning and development:

- Communication and Language
- Physical Development Personal,
- Social and Emotional Development
- Literacy
- Mathematics
- Understanding the World
- Expressive Arts and Design

At Kingsley St John's Primary, our Early Years classroom is a space where every child is nurtured, challenged, and inspired to learn through play, exploration, and meaningful relationships

## **We offer an environment where:**

- Staff know every child deeply
- Children feel safe, valued, and confident to take risks and explore.
- Positive interactions are constant: adults listen carefully, model language, and extend thinking.
- Emotional well-being is prioritised; children are supported to name and manage their feelings
- Every area (construction, role play, literacy, maths, creative, small world, sensory, outdoor) encourages curiosity and purposeful play
- Adults are highly skilled in teaching through play
- Children develop as confident, independent, resilient learners who love coming to school
- Practitioners have a clear understanding of child development and use assessment to plan next steps.
- Experiences are carefully chosen to reflect children's interests and broaden their world view (diversity, community, nature, culture)
- The curriculum is ambitious, sequenced, and inclusive, building on what children already know and can do

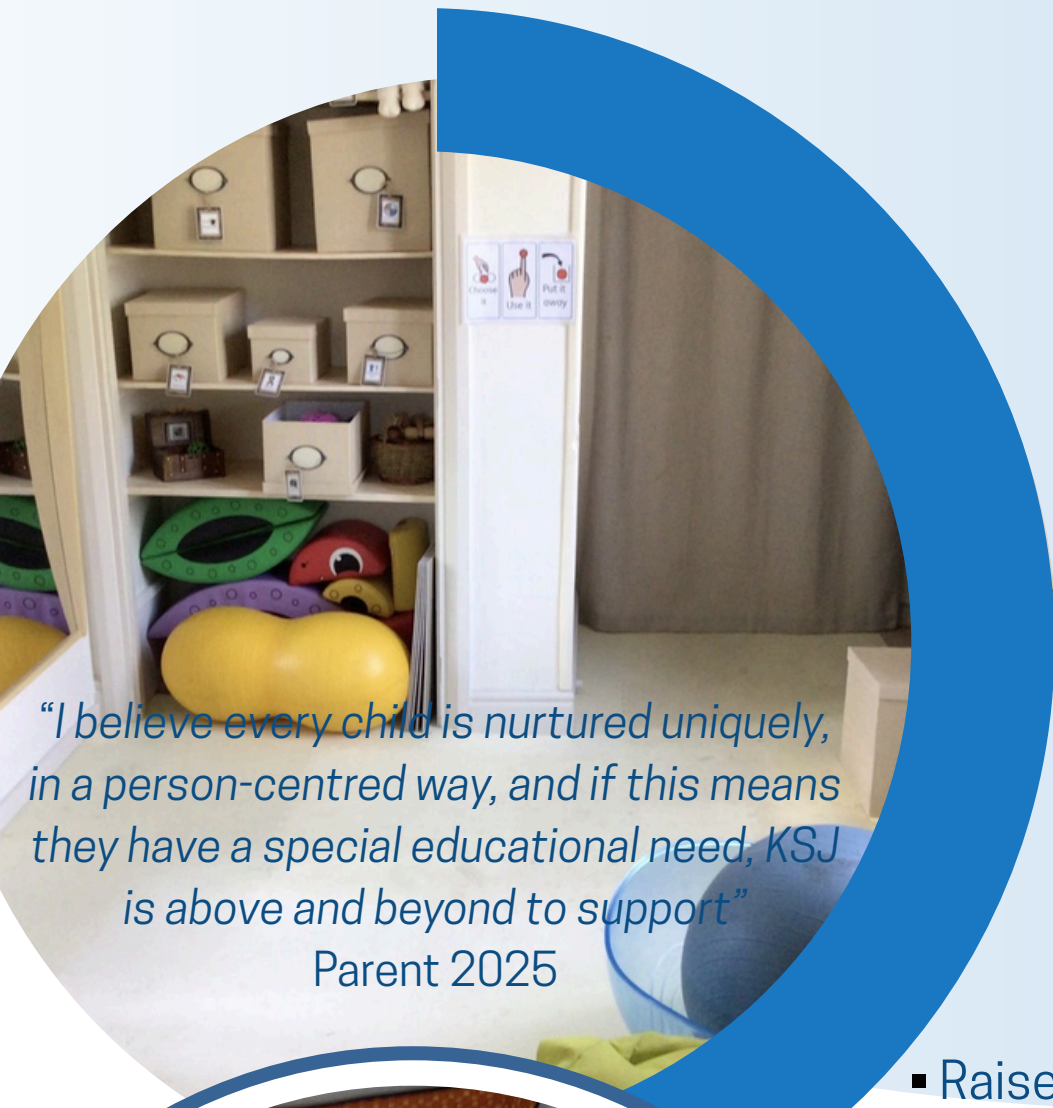


*"There's a visible culture of joy, curiosity, and respect — both in children and adults"*

*'Believe in the light, whilst you have the light, so that you may become children of light.'* John 12:36  
Love; Learn; Aspire; Achieve

# SPECIAL EDUCATIONAL NEEDS

Our Special Educational Needs and Disabilities Co-ordinator is Mrs Sam Gibson  
Email: [senco@kingsley-st-johns.cheshire.sch.uk](mailto:senco@kingsley-st-johns.cheshire.sch.uk)



*"I believe every child is nurtured uniquely, in a person-centred way, and if this means they have a special educational need, KSJ is above and beyond to support"*

Parent 2025



*"The school has high expectations for pupils' achievement. This includes pupils with special educational needs and/or disabilities (SEND)". Ofsted 2023*

At Kingsley St John's CE Primary, we pride ourselves on our inclusive, community focused environment where everyone is welcomed and all our children are treated with respect and integrity. We are a school family, where all God's children are valued. Our children build up positive, trusted relationships with staff and peers and are then encouraged and supported to become independent learners. We work hard in partnership with parents and other professionals to ensure our provision meets the needs of all our pupils, enabling them to flourish and achieve their full potential, allowing them to 'believe in the light, whilst they have the light, so they may become children of light'

## **We aim to:**

- Raise the aspirations of and expectations for all pupils with SEND, enabling all learners to make good academic, social and personal progress and reach their potential.
  - Create an ethos of inclusive practice within the school ensuring that all members of the school community are valued as individuals and are respected through equal opportunities in line with the Equality Act.
- Assess students accurately, track their progress regularly and adjust provision in the light of ongoing monitoring. Pupil Progress Meetings are undertaken termly with the Head teacher.
- Ensure that lessons are stimulating and well differentiated to meet the needs of all students.
- Make sure that additional support is well targeted both in-class support and withdrawal.
  - Use the most appropriate resources to support learning.
  - Continuously monitor and evaluate the effectiveness of our provision for all students, including those with SEND, to ensure that we are providing a high quality of educational opportunity

*'Believe in the light, whilst you have the light, so that you may become children of light.'* John 12:36  
Love; Learn; Aspire; Achieve

# SAFEGUARDING

Designated Safeguarding Lead: Mrs Rachel Jones Deputy Designated  
Safeguarding Lead: Mrs Sam Gibson  
Safeguarding Governor: Mr Ian Critchley



Kingsley St John's Primary School is committed to safeguarding children and promoting children's welfare and expects all staff, governors, volunteers and visitors to share this commitment and maintain a vigilant and safe environment. Everyone has a responsibility to act without delay to protect children by reporting anything that might suggest a child is being abused or neglected. It is our willingness to work safely and challenge inappropriate behaviours that underpins this commitment.

We work in partnership with our families and other agencies to improve the outcomes for children who are vulnerable or in need. We believe that all children have the right to feel safe and protected from harm in an environment, which values and respects each child as an individual



## **Safeguarding and promoting the welfare of children is defined as:**

- protecting children from maltreatment; preventing impairment of children's health or development.
- ensuring that children are growing up in circumstances consistent with the provision of safe and effective care.
- undertaking that role so as to enable those children to have optimum life chances and to enter adulthood successfully

*"Pupils and staff have strong relationships with one another. Pupils know that staff will help them with any concerns or worries that they have. Pupils said that they are happy and safe in school." Ofsted 2023*

*'Believe in the light, whilst you have the light, so that you may become children of light.'* John 12:36  
Love; Learn; Aspire; Achieve

# FOREST SCHOOL

Uncover the thrill of outdoor learning, where excitement, creativity, and belief sprout and blossom together!

## WHAT MAKES OUR FOREST SCHOOL SPECIAL?

Our Forest School is a magical place where children can explore, create, and learn through hands-on experiences in nature. Set within our own woodland area, it provides a safe and inspiring space for children to develop new skills and discover the world around them.

## ROOTED IN CHRISTIAN VALUES

Forest School gives children the chance to experience God's creation up close — fostering thankfulness, respect, and responsibility for the world around us. We encourage moments of stillness and reflection, helping children to see the beauty and peace of nature as part of God's amazing design.

## WHAT DO CHILDREN EXPERIENCE?

- Build dens and shelters using teamwork and creativity
- Toast marshmallows over a campfire and share stories together
- Hunt for mini-beasts and learn about local wildlife
- Use simple tools safely to make natural crafts
- Explore environmental care and stewardship
- Enjoy peaceful reflection and prayer in nature

## GROWING SKILLS FOR LIFE

Confidence – as they take on challenges and solve problems

Teamwork – through cooperation and shared success

Creativity – inspired by the natural world

Resilience – by learning from experience and embracing the outdoors

Well-being – as they enjoy peace, freedom, and joy in nature

‘Believe in the light, whilst you have the light, so that you may become children of light!’ John 12:36

Love; Learn; Aspire; Achieve



# FRIENDS OF KINGSLEY ST JOHN'S PRIMARY

Friends of Kingsley St John's is a registered charity and works solely to raise funds for additional resources and activities for the children of our school. This is achieved by organising and running various fundraising events throughout the school year.



**As a parent of a child at the school you are automatically a member of the PTA and we also warmly welcome grandparents, carers, former parents and friends to get involved in our events.**

Our Friends are a dedicated team of volunteers who raise funds to advance the education & development of all children at Kingsley St John's Primary School by assisting in the provision of facilities & opportunities

Our PTA is about much more than simply fundraising. The PTA exists to provide closer links between home and school and it is an excellent way to bring staff, parents and friends together socially in support of the school.

All parents and members of the school community are encouraged to get involved, even if they only have a small amount of time available. We run and support a huge range of events from the big money raisers to the 'just for fun' including: Film nights, KSJestival, Spooky Party, Christmas Raffle, Wreath making, quizzes and Bingo.

## **Over the last twelve months we have:**

- Funded the resourcing of the bespoke sensory room and 'The Nest' providing support for mental health and well-being
- Created the sensory garden and gardening beds
- Resources for EYFS outside area
- Whole school culinary workshop
- EYFS/KS1 sea life workshop
- Whole school pantomime
- Funding for KS2 residentials and whole school trips

*Pupils have many enrichment opportunities, they embrace learning in the outdoor environment. The school provides plentiful experiences to develop pupils' confidence and independence, pupils enjoy residentials and other wellthought-out trips and visits. Ofsted 2023*

*'Believe in the light, whilst you have the light, so that you may become children of light.'* John 12:36  
Love; Learn; Aspire; Achieve



# ADMISSIONS

As a Church of England aided school, the Governing Body is the school's admission authority. This means they are responsible, within the terms of the Admissions Code, for devising the school's admission policy and criteria for admission. The Local Authority where you live administers the admissions process. All parents must apply to the Cheshire West and Chester Admissions Team to request a Reception place for their child at our school. The easiest way to make an application is online by visiting [Chester West and Chester's admissions page](#).

## What we provide:

- A strong faith-based education
- Small class sizes which provide individual pupil attention and support
- A real community spirit which promotes self esteem and respect for all
- A wide range of experiences and educational visits which also includes residential experiences

## What we believe:

- Every child is unique, precious and can share their gifts to contribute successfully
- Self-esteem and self-respect are critical for a fulfilling life
- Every child deserves the opportunity to achieve their full potential
- Learning is an essential lifelong process – learning is a journey not a destination
- Each individual has responsibility for his/her actions and the resulting consequences

## We have:

- Close links with our community in Kingsley
- Extensive grounds which are being developed with help from the local community
- A strong reputation for nurturing children and establishing a true family ethos across the school.
- An excellent judgement in our most recent SIAMs inspection
- An experienced and well trained staffing offer to support all children in their learning and help them live their life in all its fulness.



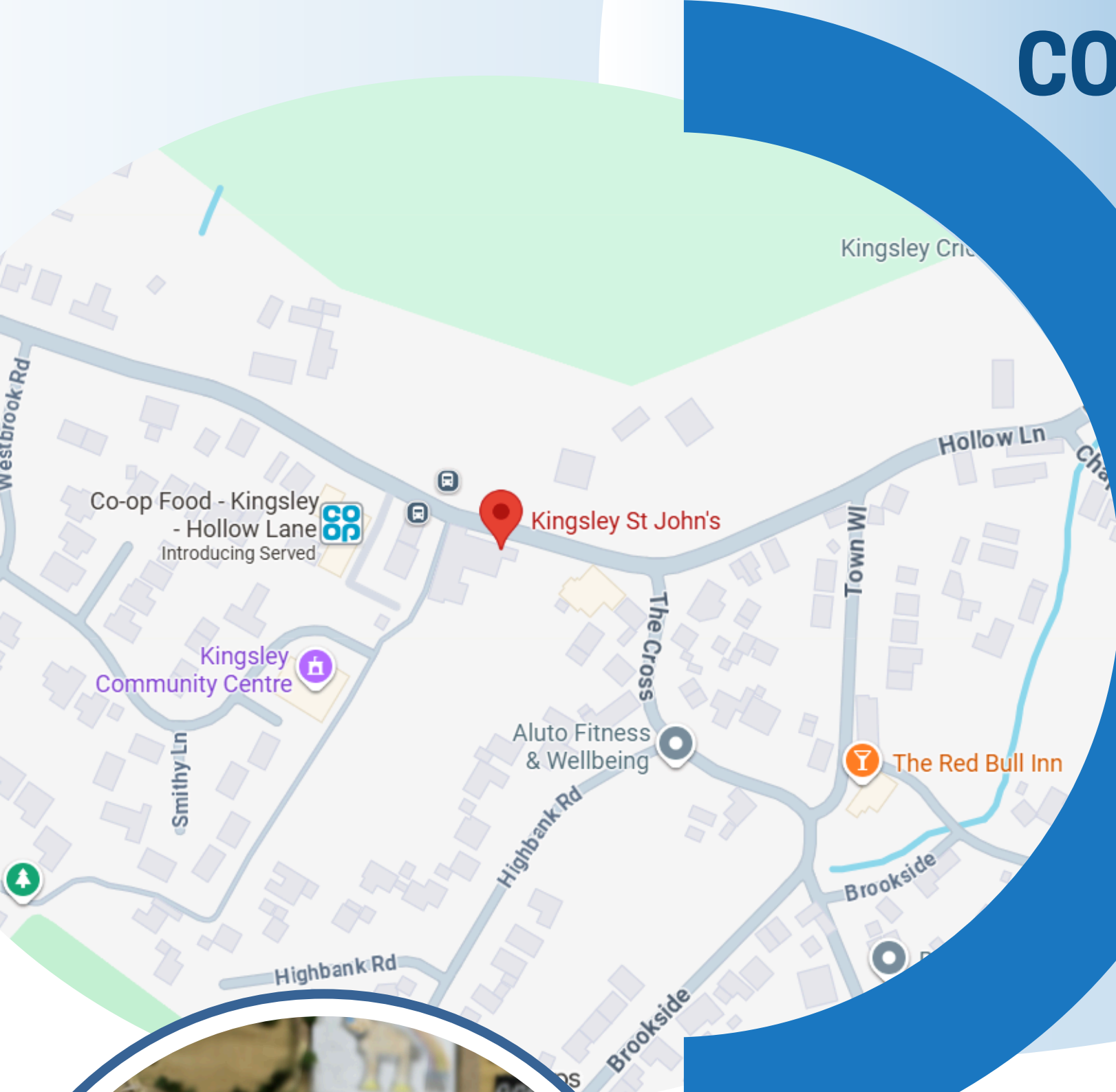
To enquire about a place and/or organise a visit to Kingsley St John's CE Aided Primary School, please phone the school office, where Mrs Bennett will be pleased to help you arrange a convenient time. We love the opportunity to show off our wonderful school and happy children. If you wish to apply, an application form must be completed, which are available from the school office or can be accessed on the Cheshire West and Chester Council website

<https://www.cheshirewestandchester.gov.uk/residents/education-and-learning/school-admissions/in-year-school-transfers>

*'Believe in the light, whilst you have the light, so that you may become children of light.'* John 12:36

Love; Learn; Aspire; Achieve

# CONTACT US



At Kingsley St John's Primary we recognise that choosing a school for your child is one of the most important decisions parents make—it shapes not only academic development but also social, emotional, and personal growth. We believe that every child deserves to be happy, confident, and inspired to learn. Our close-knit community, dedicated staff, and supportive families make our school a place where children truly thrive — both academically and personally. We would love to welcome you and your child to visit us, meet our staff, and experience our vibrant classrooms in action. Seeing our school in person is the best way to understand what makes it such a special place to grow and learn

## LET'S CONNECT

**School Bursar | Emily Bennett**

01244 738434

[admin@kingsley-st-johns.cheshire.sch.uk](mailto:admin@kingsley-st-johns.cheshire.sch.uk)

**SENCo | Sam Gibson**

[senco@kingsley-st-johns.cheshire.sch.uk](mailto:senco@kingsley-st-johns.cheshire.sch.uk)

## DISCOVER US

**Hollow Lane,**

**Kingsley, WA6 8EF**

**Headteacher | Rachel Jones**

[head@kingsley-st-johns.cheshire.sch.uk](mailto:head@kingsley-st-johns.cheshire.sch.uk)

*Believe in the light, whilst you have the light, so that you may become children of light.'*

*John 12:36*

Love; Learn; Aspire; Achieve

