

Teaching Staff



Teaching Staff



Miss Forbes

alice.forbes@bosleyschool.co.uk



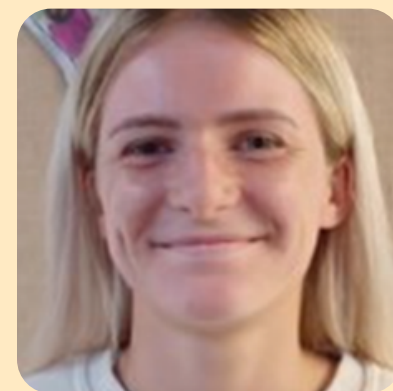
Mrs Brassey



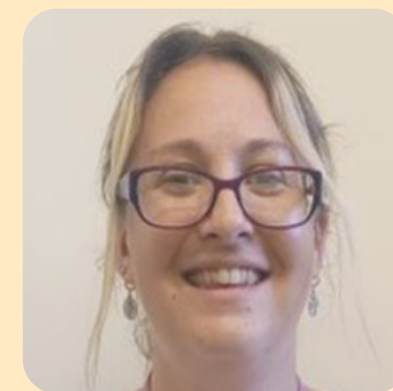
Mrs Hadfield



Mrs Hall



Miss Harrison



Miss Evans



Mrs Conroy

Blossom Class - Take a peek



Curriculum



Re



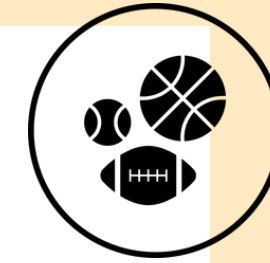
Maths



Phonics



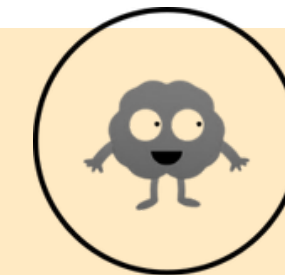
Literacy



Pe

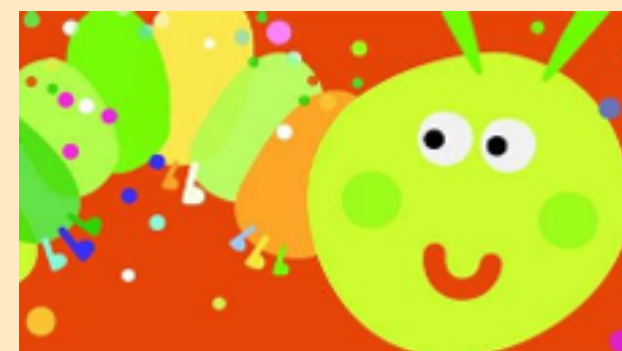
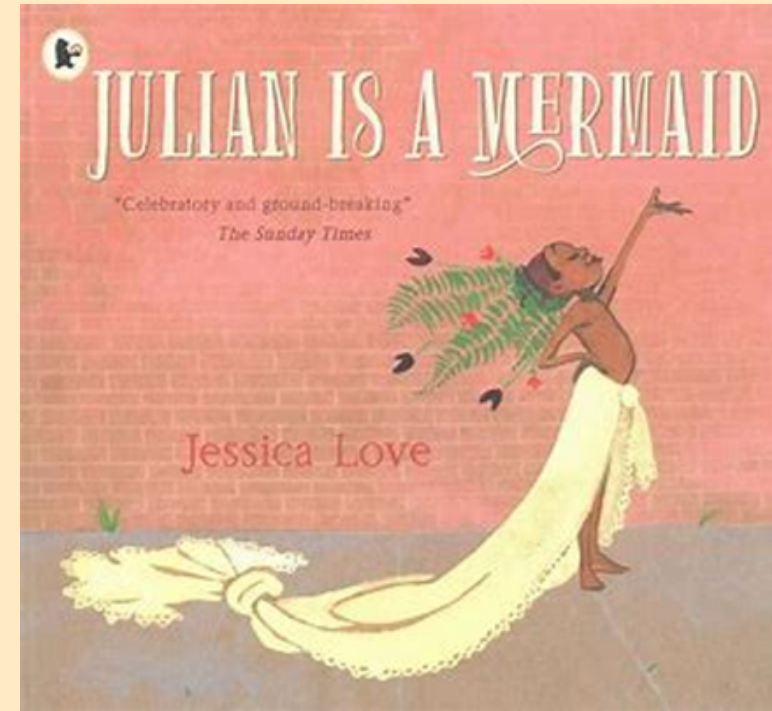
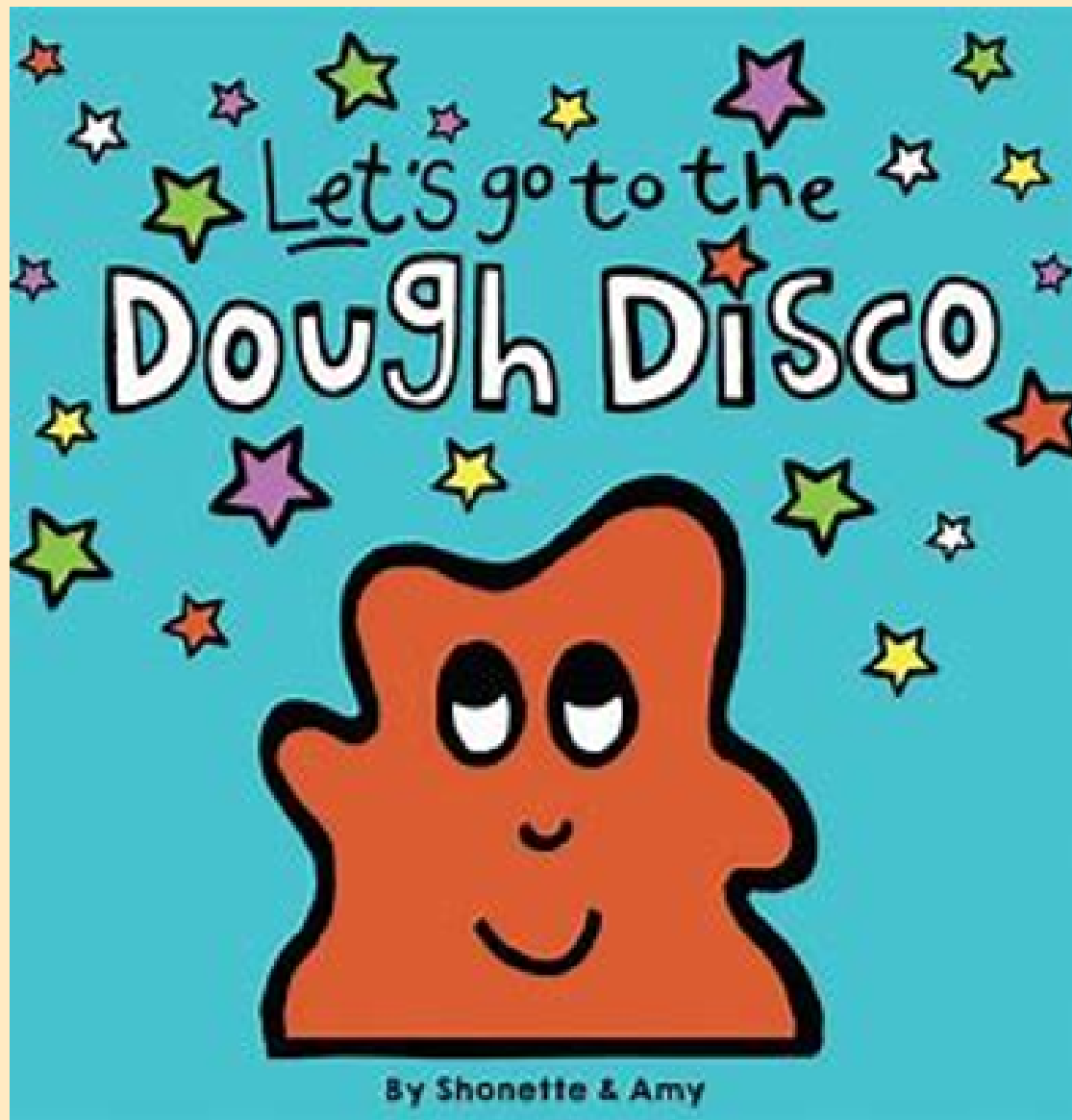


Forest
School



My Happymind

Daily Timetable



Once a Week



The classroom has many areas that make up continuous provision. These can be accessed freely in choosing time. Adults role model and support children through quality interactions.





Enhanced Provision

Bringing learning to life with play based activities set up by us. This might practise a skill or promote vocabulary or retrieve previously taught knowledge through adult interactions, modelling and conversations.

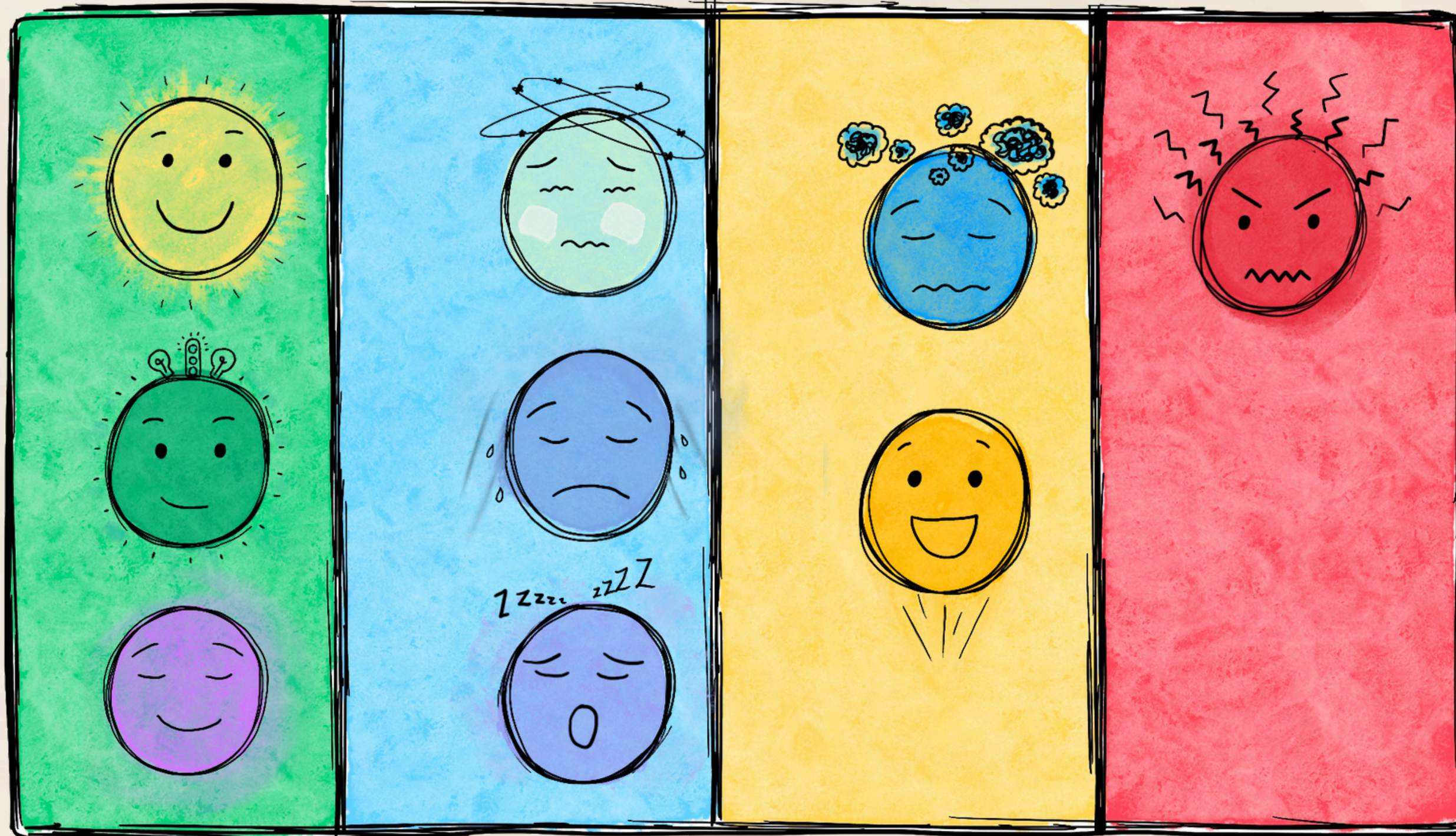
Which zone are you in?

Green

Blue

Yellow

Red



We talk
about our
feelings.



Our School Rules

Ready

We are prepared for what comes next.



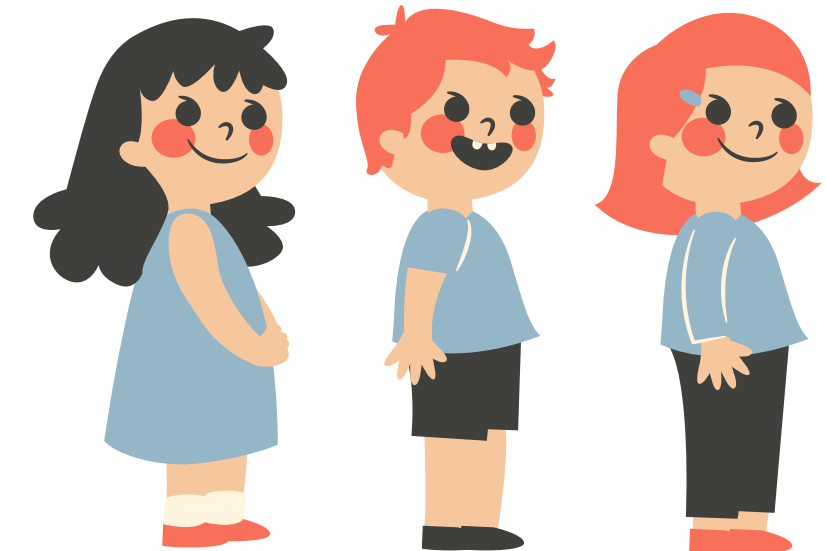
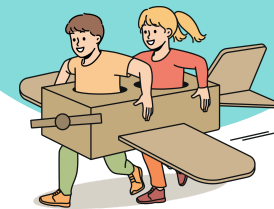
Respectful

We care for everyone and everything in our school.



Safe

We look after ourselves and each other.





m m m

Practise handwriting

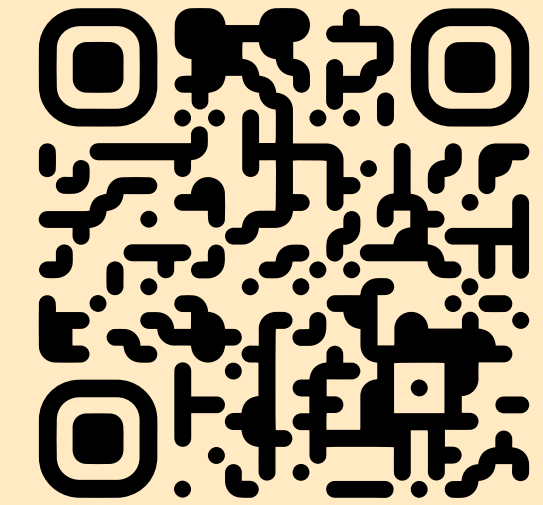
Maisie, mountain, mountain

m m m m m

Say the sound as you write

m

Read Write Inc. Phonics © Oxford University Press 2016. No sharing, copying or adaptation of materials permitted except by subscribers to Oxford Owl



t

Read Write Inc. Phonics

Sound Blending 1

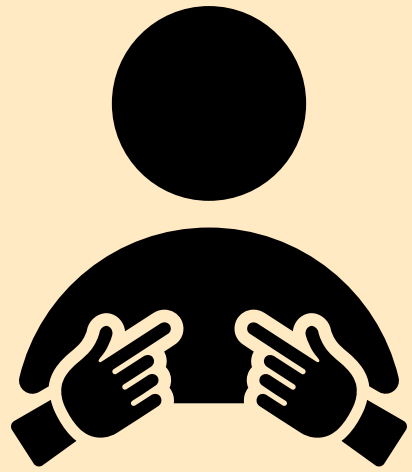
Series developed by Ruth Miskin

OXFORD

Phonics



Themes



All about me.

Sparkle and
shine.
Celebrations

Animal and
settings.

Growing and
changing

Journeys
Hot and cold.



Snack and chat.



Book , snack and
chat.

Please no nuts , no popcorn and can grapes be sliced.

Reception Baseline Assessment

Information sourced from the government guidance on the RBA.

What is it?

A statutory EYFS assessment.

It needs to be done in the first six weeks of a child starting reception.



What is its purpose?

To provide a progress measure for schools.

It will give a starting point for year-level progress.

It is not to make judgements about early years provision.



What happens to the data?

It will be confidential and in the National Pupil Database.

It will not be shared or published.



What about the results?

Teachers will receive short statements telling them how the child performed.

There are no expected results and children cannot pass or fail.

Schools must share a pupil's RBA statements with the child's caregivers if they request them.

What will it assess?

It assesses mathematics, literacy and communication and language.

Topics include early number, phonological awareness and early comprehension.



How will it be carried out?

It should be carried out using the EYFS framework guidance.

Schools have six weeks to do the assessment after a child joins reception, no matter what time of year.



SLT and Ofsted

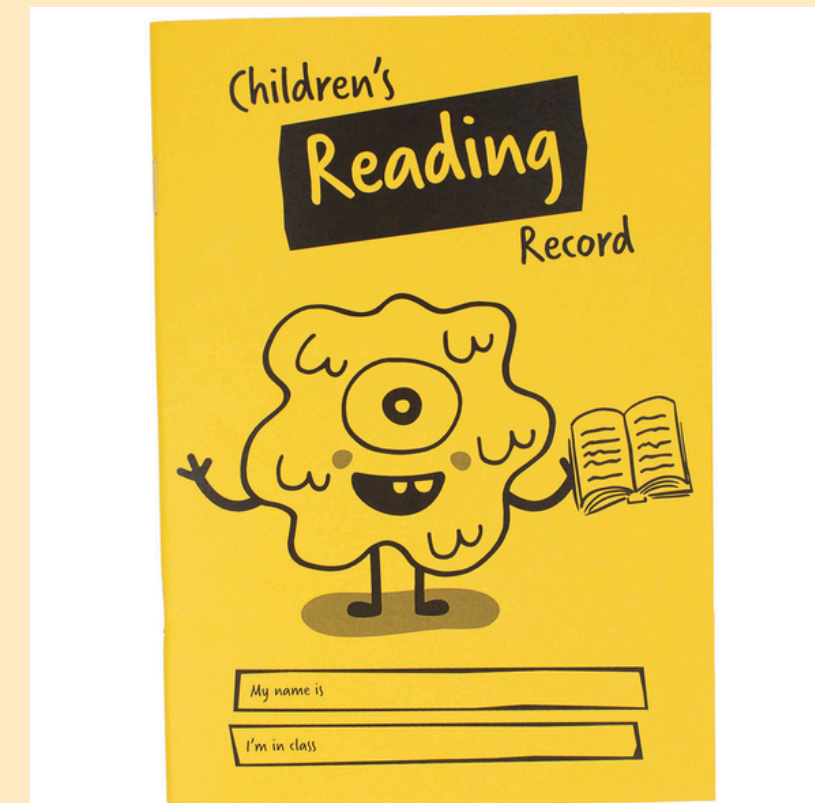
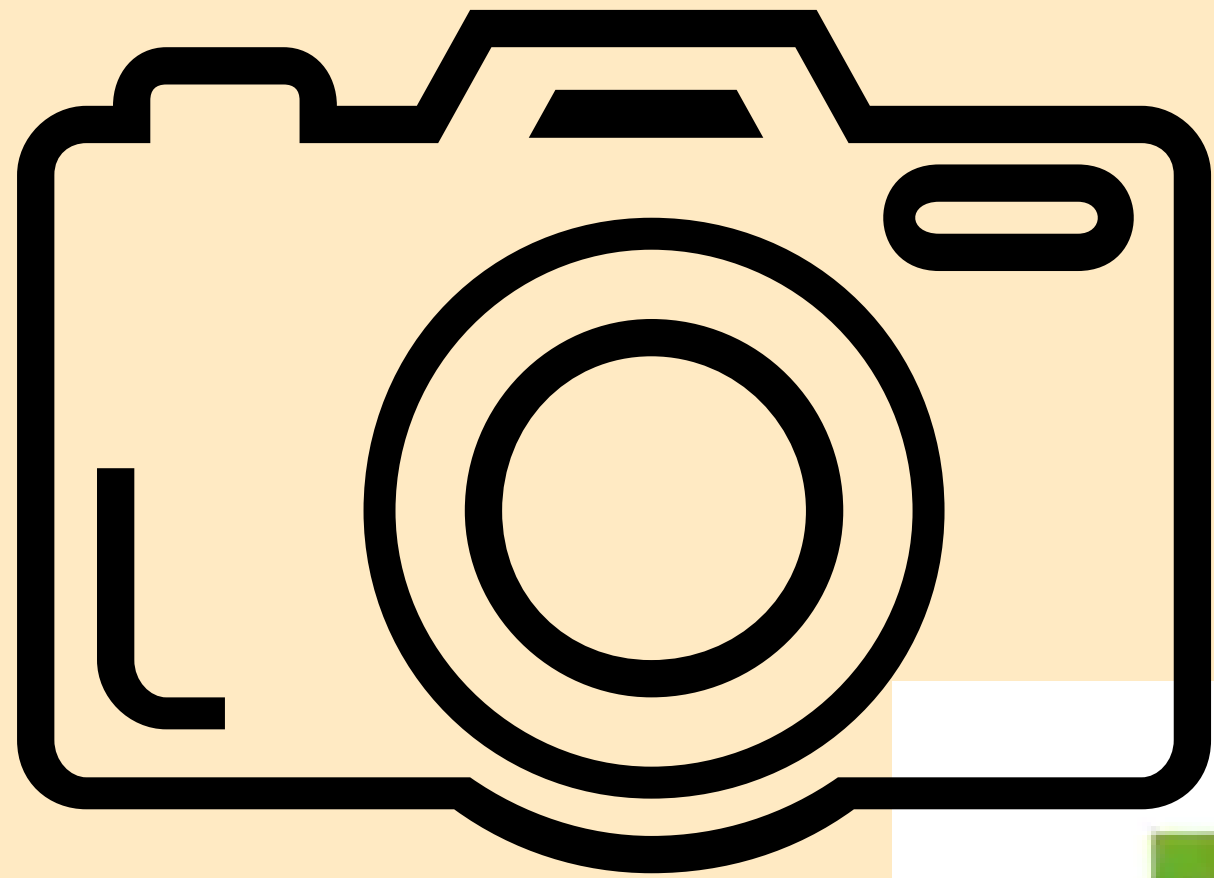
The RBA should not be part of an Ofsted inspection and Ofsted will not have routine access to the data.

Headteachers must sign a headteacher declaration form once every academic year.

Ofsted will have access once the progress measure is released at the end of key stage 2.

The headteacher will make the final decision on whether it is appropriate for a pupil to participate if they are unable to access the RBA.



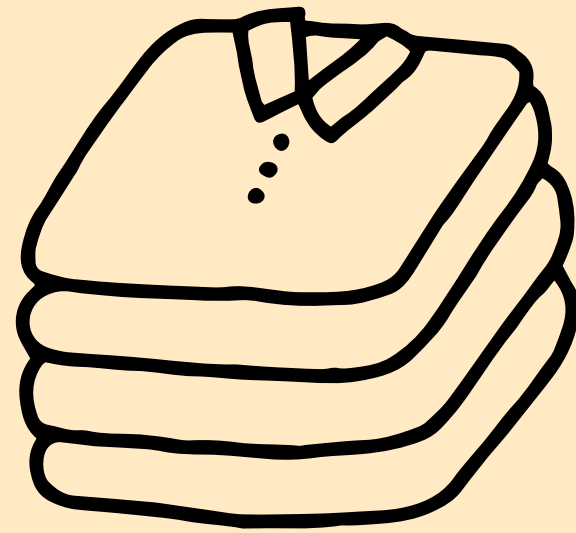


Ways to find out about our learning.

What do children need for school?



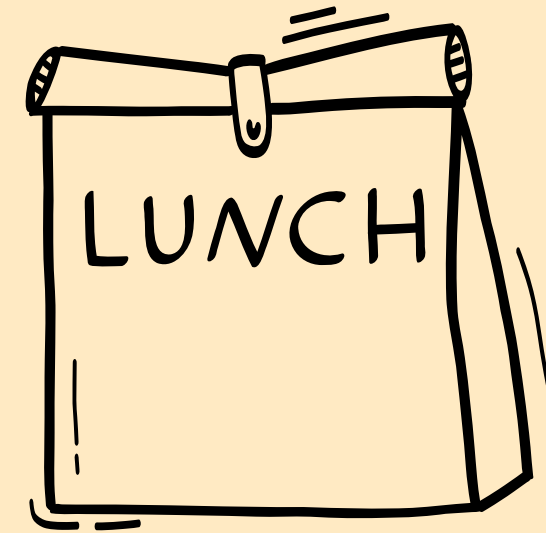
Uniform



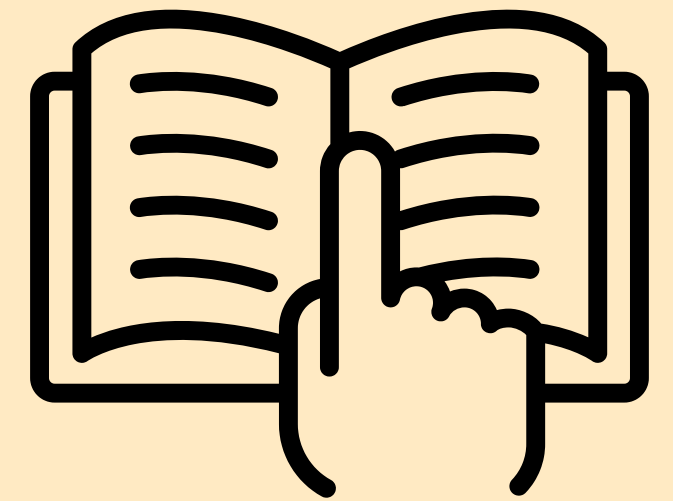
Spares
(if appropriate)



Water Bottle

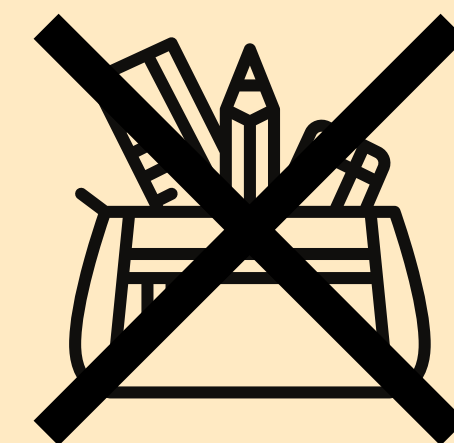


Lunch

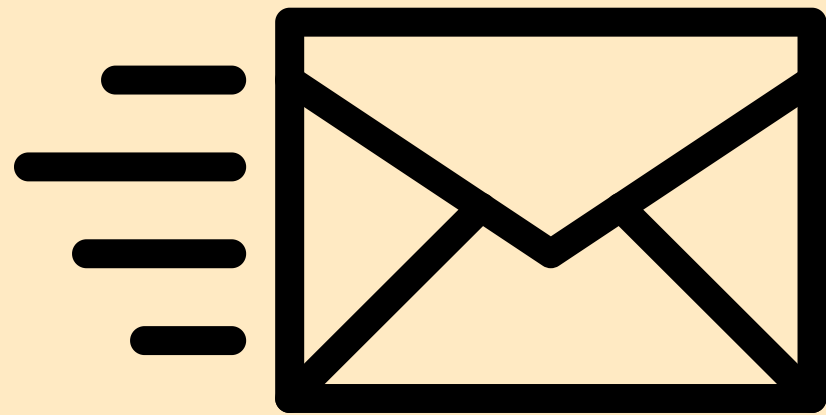


Reading Book

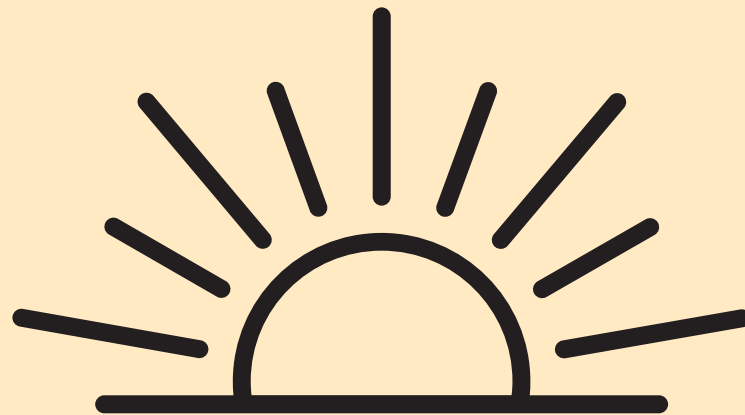
- Label everything!
- No stationery or toys (unless agreed by teaching staff)



Working Together



Email



Morning Message



After School

alice.forbes@bosleyschool.co.uk

Please allow three school days for replies to emails. Emails will be sent within school hours.



Support outside of school



Any Questions?