



Bosley St. Mary's
CE PRIMARY SCHOOL

EYFS Handbook 2026/27

A guide for parents of children in Pre-School and Reception.



I can do all things through Him who strengthens me.
Philippians 4:13

Welcome To Bosley!

Welcome to the Bosley St. Mary's family! We're thrilled to have you join our vibrant community and incredibly grateful for the trust you've placed in us.

Here at Bosley St. Mary's, we believe every child is capable of blossoming, and education is the key that unlocks their potential. Our dedicated team is passionate about creating a safe, nurturing, and stimulating environment where your child can thrive.

We view ourselves as partners on this educational journey. You are, after all, the expert on your child, and we deeply value your insights and contributions. Together, we'll work collaboratively to ensure the very best outcomes for your little one.

At Bosley St. Mary's, positivity and proactiveness are at the heart of all we do. We're a team that celebrates every success, big or small, and constantly seeks solutions to help your child build a strong foundation for the future.

But above all else, relationships are our priority. We strive to create a warm and welcoming atmosphere where both children and parents feel valued and supported. Your child's well-being and development are at the core of everything we do, and we look forward to working closely with you to ensure they have a joyful and enriching school experience.

Thank you for choosing Bosley St. Mary's. Together, let's make this an unforgettable journey for your child!

Alice Forbes

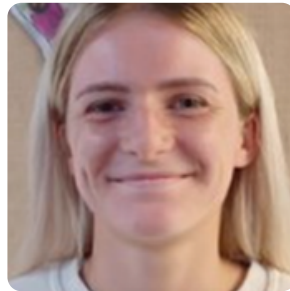
EYFS LEAD

Rebecca Hadfield

HEADTEACHER

*Rooted in belonging,
blossoming in love.
Every learner flourishing*

Our Blossom Class Team



Blossom Class is taught by Ms Forbes, our EYFS Lead, Phonics Lead and SENDCO, who is also part of the school's inclusion team. She is supported by Mrs Conroy, whose particular passion is Forest School and outdoor learning, and Miss Harrison, who brings energy and enthusiasm to sport and physical development. Between them, the team holds a wealth of Early Years knowledge and qualification, and shares a genuine commitment to nurturing every child and bringing out the very best in them.

Our Vision and Values

Our Christian Ethos

Our school is a happy family where we encourage each other to shine and be the best that we can be. Our enriching curriculum inspires confident, aspirational pupils to have a love of learning and a passion for serving our community. We are inspired by the words of Philippians 4:13, “I can do all things through Him who strengthens me.” Our Christian values create a safe, nurturing space where all are respected, valued, and enabled to succeed and flourish in God’s love.



I can do all things through Him who strengthens me.



Our School Values



Being the best we can be

Encouraging each other to shine

All joined in love and friendship

Reaching for the knowledge to

Succeed and flourish in God’s love



Teaching and Learning

EYFS Framework

In Blossom Class, we follow the EYFS framework, a playful journey packed with opportunities to reach the Early Learning Goals (ELGs). Through three key areas - Communication & Language, Physical Development, and Personal, Social & Emotional Development - your child builds a strong foundation. These areas blossom into four exciting branches: Literacy, Mathematics, Understanding the World, and Expressive Arts & Design. It's all about learning through play, exploration, and discovery!

Our Curriculum

Our curriculum is a fun-filled adventure that unfolds over two years. We follow your child's lead, using their interests to spark a love of learning through engaging activities, books, and exploration in our natural environment. Play, exploration, and communication are at the heart of our child-centred approach, where we ignite imaginations and help children develop a deep connection with the world around them.

How We Teach

Learning happens everywhere in Blossom class. We weave adult-led sessions seamlessly with child-driven exploration, offering a range of activities (known as enhanced and continuous provision) which spark curiosity and deepen understanding. So, if your child says they've been playing all day, rest assured - through play, exploration, and discovery, they've been learning in abundance.

Behaviour Policy

Our School Rules

Ready

We are prepared
for what comes next.



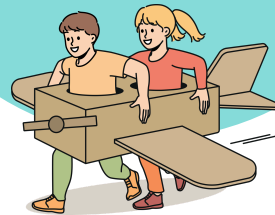
Respectful

We care for everyone and
everything in our school.



Safe

We look after ourselves
and each other.



At Bosley St. Mary's, we believe in fostering a positive and supportive environment where children can learn and grow. We use a simple three-point approach to behaviour: ready, respectful, and safe. This helps children understand expectations and provides a framework for positive interactions. We focus on supporting children to develop appropriate behaviours through positive reinforcement, redirection, and clear communication. When situations arise, we take a restorative approach, working collaboratively with you to find solutions and teach valuable social-emotional skills. Together, we can create a happy and harmonious environment where everyone feels safe and respected.



A Typical School Day

Time	Activity
8:40	School opens are children are welcomed in
8:50	Morning Registration and Strong Foundations
9:00	Phonics
9:30	Learning session one
10:30	Breaktime
10:45	Learning session two
11:50	Lunch
13:00	Afternoon Registration
13:05	Collective worship
13:20	Learning session three
14:00	Break time
14:15	Learning session four
15:00	Author time and end of school day activities
15:20	Hometime

Our Uniform

Uniform

- White polo shirt or white shirt and school tie
- Burgundy school jumper or cardigan
- Grey trousers, skirt or pinafore
- Black shoes
- Summer dresses or grey shorts are also acceptable.



PE Kit

- White T-Shirt
- Grey, black or burgundy joggers or shorts
- School jumper or cardigan,
- Black or white trainers.
- No sports logos.



Forest School

Clothes that children can wear over their uniform:

- Waterproof coat and waterproof trousers (or a puddle suit)
- Wellies or sturdy outdoor boots
- Warm hat/gloves in colder months / sun hat in warmer months
- Spare socks (in case feet get wet)
- Old clothes/layers to wear under waterproofs if the weather is cold



Ordering uniform

The school's current school uniform supplier is:

Fourjays Office Ltd
Blackwood Hill,
Beat Lane, Rushton Spencer, Macclesfield SK11 0RU

Tel: 01260 226010 / 07974 680077
Email: John@fourjaysoffice.co.uk

The order form is on our school website ([see here](#)) and should be sent directly to Fourjays.

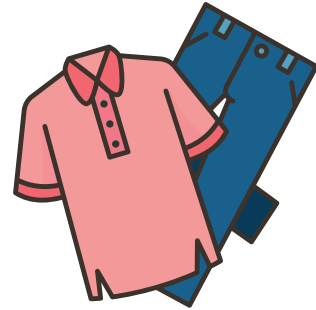
Lost Property

Please label everything: labels come off and pen fades, so it is worth checking and refreshing regularly.

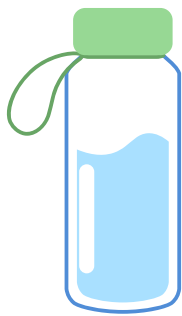
What to Bring to School



Bookbag



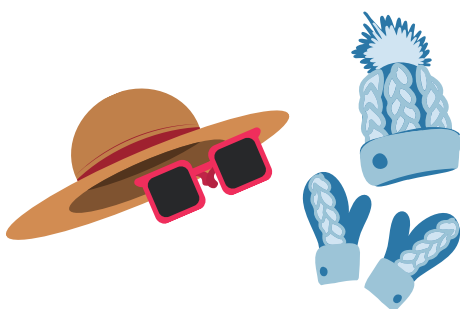
Spare clothes



Water bottle



Wellies



Clothes for every type
of weather



Please don't bring toys
unless asked to by teachers

Useful Information

Useful Information

Each year, before the start of the autumn term, we publish a whole-school Parents Handbook covering our policies and procedures in full. The information below gives you the key things to know for Blossom Class specifically.

Allergies and Dietary Needs

We collect allergy and dietary information as part of our annual data collection. If your child develops an allergy during the year, please let us know straight away. All staff hold up to date anaphylaxis training, epi-pens are kept on site, and we are a nut-free school.

Attendance

Every moment in school matters, not just for learning but for friendships and confidence. Attendance is statutory in Reception. If your child is absent, please let us know on the first day via Compass or by calling the office. Term-time holidays in Reception are not permitted except in exceptional circumstances.

First Aid

Bumps and falls are part of life in Blossom Class as children develop physically and grow in confidence. All members of the Blossom team hold a paediatric first aid qualification and we will always let you know if your child has had a bump during the day.

Illness

Children are often well enough to come to school when they are not quite at their best, and we will call home if we feel they need to be collected. Please keep your child at home for 48 hours after a sickness bug before returning to school.

Keeping in Touch

Communication goes through Compass, our school app, where you can also report absences and make payments. Your child's home-contact book is checked daily and is a great place to pass on messages. Teachers are available for a brief chat at the start and end of the day, and longer appointments can be arranged through the office.

Useful Information continued

Medication

We keep Calpol in school and will always call for verbal permission before giving it. For any other medication, a consent form must be completed before we can administer anything: please collect one from the office.

Parking and Drop-off

School opens at 8:40 and the day begins at 8:50. Parking is available on the layby, at the church, or at the Harrington Arms. Please be respectful of our neighbours and take care crossing the road.

Safeguarding

Keeping our children safe is the most important thing we do, and this includes teaching children how to keep themselves safe, reflected in our school rule: Safe. Our Designated Safeguarding Lead is Ms Hadfield, supported by Mrs Hall and Miss Forbes as Deputies.

Settling In

Every child is different and we take settling in gently, working closely with you in the first weeks. If your child finds mornings difficult, please speak to us: we will always find a way to help.

Sharing Our Learning

We use Tapestry as our online learning journal and warmly encourage you to add observations from home too. We celebrate school life on our Facebook page and invite parents in for showcase afternoons throughout the year.

Snacks and Lunch

We enjoy a daily snack and chat time together: fresh fruit is available and children can order toast for a small charge. At lunch, children are entitled to a free school dinner or may bring a packed lunch. A good packed lunch includes a balance of protein, carbohydrate, fruit or vegetables, and a drink: please avoid nuts, sweets, and fizzy drinks. We are a nut-free school. Please send a named water bottle each day.

Special Educational Needs

Every child learns differently, and one of our greatest joys is helping them to know and celebrate that about themselves. For some children, that means something different from, or additional to, what others need, and we will always work closely with you to make sure the right support is in place.



We are so pleased to welcome you to the Bosley St. Mary's family. This handbook is written with care, and we hope it answers most of your questions before you even need to ask them. As always, our door is open.

We look forward to getting to know you and your child, and to working closely with you in the years ahead.

The information in this handbook was correct at the time of writing. Please refer to our whole-school Parents Handbook, published each September, for the most up to date policies and procedures.