

Assessments Information Evening



24th January 2024



Bosley

St. Mary's CE Primary School



Year 6 SATs

- End of Key Stage assessments
 - Spelling, Punctuation and Grammar (2 papers)
 - Reading (1 paper)
 - Maths (3 papers)
- Writing examples assessed
- Exam conditions
- Externally marked
- Results in July

Who is it for?

Year 6

When is it?

14th - 16th

May 2024

The Papers

- Spelling, punctuation and grammar
 - Paper 1: Grammar/ Punctuation/ Spelling
Monday 13th May
 - Paper 2: Spelling test – Monday 13th May
- Reading – Tuesday 14th May
- Maths
 - Paper 1: Arithmetic – Wednesday 15th May
 - Paper 2: Reasoning – Wednesday 15th May
 - Paper 3: Reasoning – Thursday 16th May

The Results

- Papers are externally marked
- Three scores:
 - Raw Score
 - Scaled Score
 - Judgement against the National Standard
- Scaled scores range from 80 to 120
 - A scaled score of 100 or more shows the pupil is meeting the National Standard



What it looks like GPS Paper 1

Tick one box in each row to show whether the sentence is an **exclamation** or a **question**.

Sentence	Exclamation	Question
How disappointing it was that it rained on sports day		
How many times have you been to the swimming pool this week		
How will you spend your summer holidays		
How kind you are to give me this present		

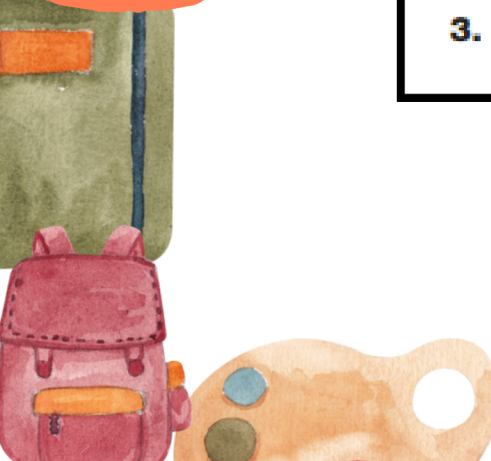




What it looks like GPS Paper 2

Spelling

1. There was a _____ in the field.
2. I kept in _____ with my old friends when we moved.
3. The questions were _____ from one to ten.





What it looks like Reading

Look at the first paragraph.

How can you tell Priya was feeling nervous?

Write **two** ways.

1. _____

2. _____ 2 marks

Look at the paragraph beginning: *The sound died away...* to the paragraph ending: *...the other side of the valley.*

Number the following locations 1–4 to show the order in which Priya thought she heard the vehicles travel.

the foot of the hill

the campsite

the cattle grid

the bridge

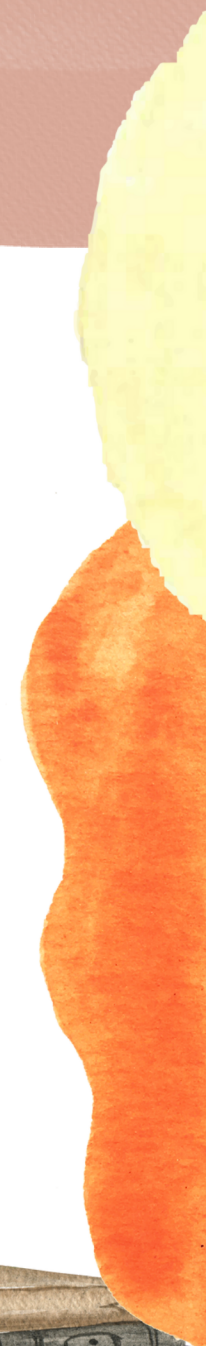
What positive messages does Harriet want readers to understand about bats?

Give **two** positive messages, using evidence from the text to support your answer.

An example has been done for you.

Positive message	Evidence
Bats shouldn't be judged by their appearance.	She says even though they might look scary they aren't really.
_____	_____
_____	_____
_____	_____
_____	_____
_____	_____
_____	_____

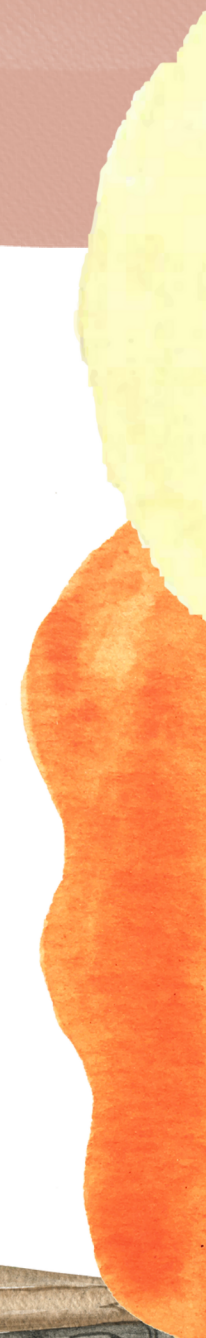
3 marks





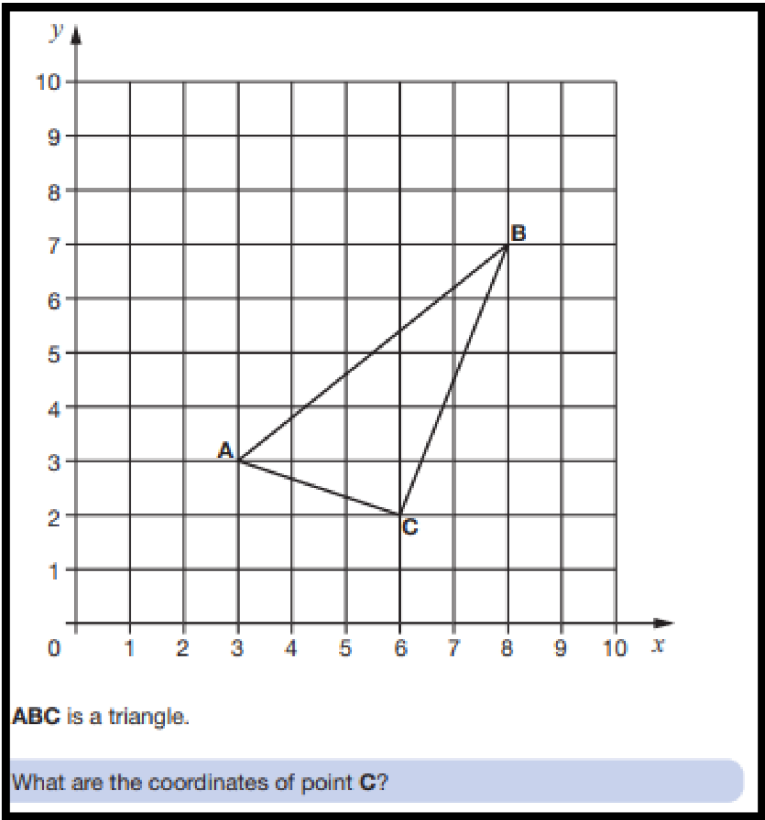
What it looks like Maths Paper 1

1	$707 - 10 =$		<input type="checkbox"/>	1 mark																																								
2	<input type="text"/> = $6,138 + 456$		<input type="checkbox"/>	1 mark																																								






What it looks like Maths Paper 2





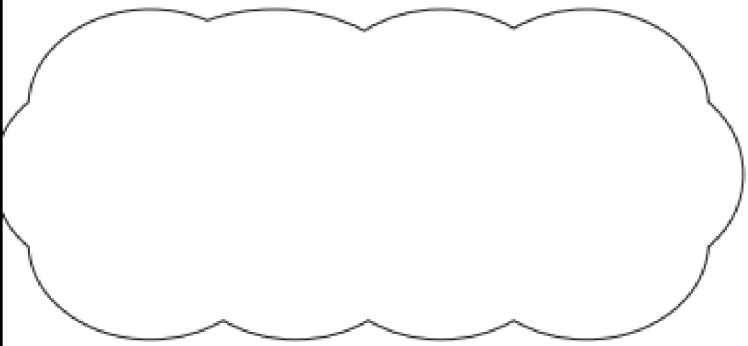
What it looks like Maths Paper 3

Jack says,



I multiplied a whole number by 3
My answer was 32

Explain why Jack is **not** correct.



1 mark





Helping at home

Firstly, a positive attitude goes a long way! Give them as much encouragement and support as you can (but we don't need to tell you that)!

Tips:

- Please don't use past papers as they are used in school to prepare the children. Encourage your child to use the CGP study books for revision in Maths and English, which have been provided by school and to attend the Rising Stars Club.
- Talk to your child's class teacher if you have any concerns rather than worry your child.
- Encourage your child to talk to their teacher or a trusted adult (including yourself) about how they're feeling.
- Ensure your child is eating and drinking well and getting a good amount of sleep.
- Plan something nice and fun for the weekends before and after SATs. This will help them to relax before the SATs and give them something to look forward to after.



Things to Remember

SATs focus on what children know about Maths and English. They will not reflect how talented they are in all other areas of the wonderfully broad curriculum they experience at Bosley - and they certainly won't highlight all of their amazing personal characteristics!

SATs don't tell the whole story. Their results will say if they did or did not meet a certain standard but not necessarily by what margin. These thresholds change each year according to the overall national performance, so what was classed as 'meeting the expected standard' this year might not be the same as last year.