



Willow



Spring Term



Bosley

St. Mary's CE Primary School



Welcome back everyone! This term we will be venturing back in time to visit the Ancient Egyptians. As historians we shall use clues to find out about the buildings, writing and lifestyles making up this amazing civilisation.

If you wish to know anything further I am available at the end of most school days or can be contacted via my school email or the office.

Miss Harrison

Our Learning



R.E.

Jesus
Easter



Maths

Multiplication and
Division
Shape and Space



Science

Plants



Reading

The Story of
Tutankhamun
Mr Peabody's Apples

Writing

Cinderella of the Nile
The Tin Forest



Foundation Subjects



French

French culture



History

Ancient Egypt

Geography



Our European Neighbours



Art

Texture and Form (Egyptian adornments)



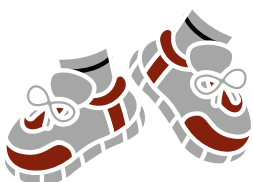
Computing

Digital Literacy
Research



Personal, Social, Health and Economic Education

My Happy Mind



PE is on Monday and Friday. Bring PE kit to change into on Mondays and wear it all day on Fridays.



Forest school is on Thursday. Remember to dress for the weather and bring a change of clothes.



We have an act of Collective Worship everyday. Please join our church services!

Things to Remember

Homework

Set on Friday
Please return by
the next Thursday.

Reading is everything!

Aim to read at least
three times a week.

Books are
changed text

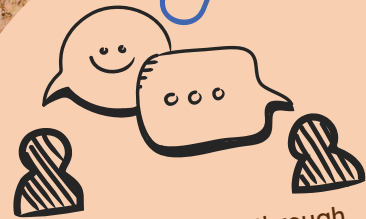


School starts at

08:45



Register closes



I can do all things through
Him who strengthens me.
Philippians 4:13

Our
School
Rules

Ready

We are prepared
for what comes next.



Respectful

We care for everyone and
everything in our school.



Safe

We look after ourselves
and each other.



Bosley

St. Mary's CE Primary School