



Hollinhey Primary School & Nursery

PROSPECTUS 2025/2026

‘Together we succeed’



Hollinhey By Rich Gilmartin

A warm welcome to Hollinhey



We are delighted that you have shown an interest in our wonderful school and nursery setting. Hollinhey Primary School & Nursery is in the lovely village of Sutton near Macclesfield in Cheshire. We provide nursery and primary education from Nursery (aged 2) to Year 6 (aged 11) in single year classes and we have about 200 children in the primary school and 30 daily places at our Nursery (9am-3pm).

Here at Hollinhey Primary School and Nursery, we want every pupil to experience a relevant, interesting and varied curriculum within a very happy and stimulating environment where they will achieve their full potential. We are extremely fortunate in having a very caring and enthusiastic staff who are highly committed to achieving this for your child. Academic expectations are high at Hollinhey, yet all interests, achievements and talents are nurtured and celebrated.

We hope that this quality will ensure that every child develops self-confidence and a very positive attitude towards learning that will serve them well throughout life.

We place a tremendous value upon our partnership with you as parents and carers in helping us to achieve the very best for your child and we look forward to working with you.

Mrs Caroline Massey

Acting Headteacher
head@hollinhey.cheshire.sch.uk

‘Hollinhey is a welcoming, caring school. Pupils are happy to attend and say that they feel safe and well looked after. Positive relationships are a strength of the school.’
OFSTED March 2023

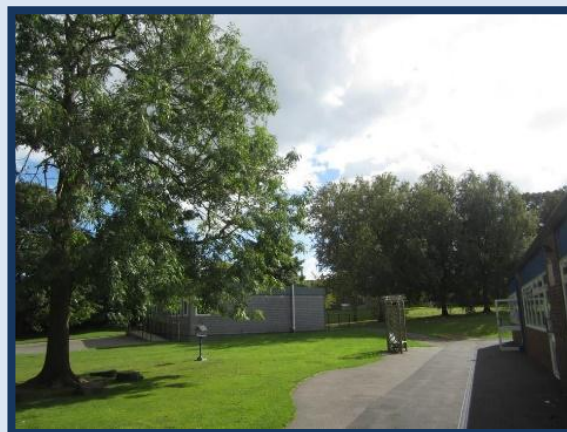


Hollinhey Primary was opened in 1970; the building and grounds provide us with excellent opportunities for a wide range of activities.

Inside the main school we have a central hall, seven large classrooms, three learning bays, a music room, smaller intervention rooms, a food tech room and an ICT suite. The suite allows every child access to a computer so that whole class teaching and learning of ICT can take place effectively. Every classroom has an LED interactive multi-touch display screen and share a class set of both laptops and I-pads.



Outside we have a large school field, two large playgrounds, a climbing frame, outside gym equipment, a climbing wall, a "quiet area", a willow tunnel, an outdoor library, a wild area, a children's garden and an enclosed environmental area.

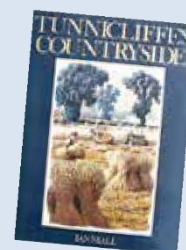


The whole school is set in well-maintained grounds and is surrounded by beautiful countryside.



In September 2025, we welcomed Sutton St James Pre-school & Out of School Club into our Hollinhey family. This enables us to provide through educational provision from 2 to 11 years old in an amazing setting on one site.

Charles and Winifred Tunncliffe bequeathed the land for the school. Charles Tunncliffe was a famous and celebrated wildlife artist who specialised in painting and drawing birds and scenes of country life. The school holds an annual memorial art competition to honour the artists and to encourage the children to develop their own artistic talents. This aspect of school life makes Hollinhey very special.





Hollinhey is well known for the opportunities offered in music. Every year 4 child learns to play an instrument, free of charge, through Love

Music Trust. Recently we have added the teaching of playing ocarinas to the younger children. The children regularly perform in assembly and for the local community.



Our Modern Foreign Language teaching is of a very high standard and every year we have a day to celebrate different languages.



We also provide a huge range of extra-curricular clubs including dance, chess, cookery, gardening and a wide range of sports clubs such as multi-skills, cross-country, football, netball, rounders, cricket and rugby. Our Friends of Hollinhey PTA also fund special events throughout the year including Author Visits, Drumming Workshops and Rock Kidz!

We teach a structured, synthetic phonics programme called Read, Write, Inc. starting in the final Summer Term of Nursery. Children are taught in ability groups dependent on their needs. These groups are led by teachers and classroom assistants. Phonics is taught daily at a dedicated time for both Foundation Stage and Key Stage 1, following 'Read Write Inc' scheme. Lessons consist of activities which teaches the children to read accurately and fluently with good comprehension. They learn to form each letter, spell correctly, and compose their ideas step-by-step. We believe in early intervention and implement specialized reading programmes including Inference Training and BR@P amongst others.

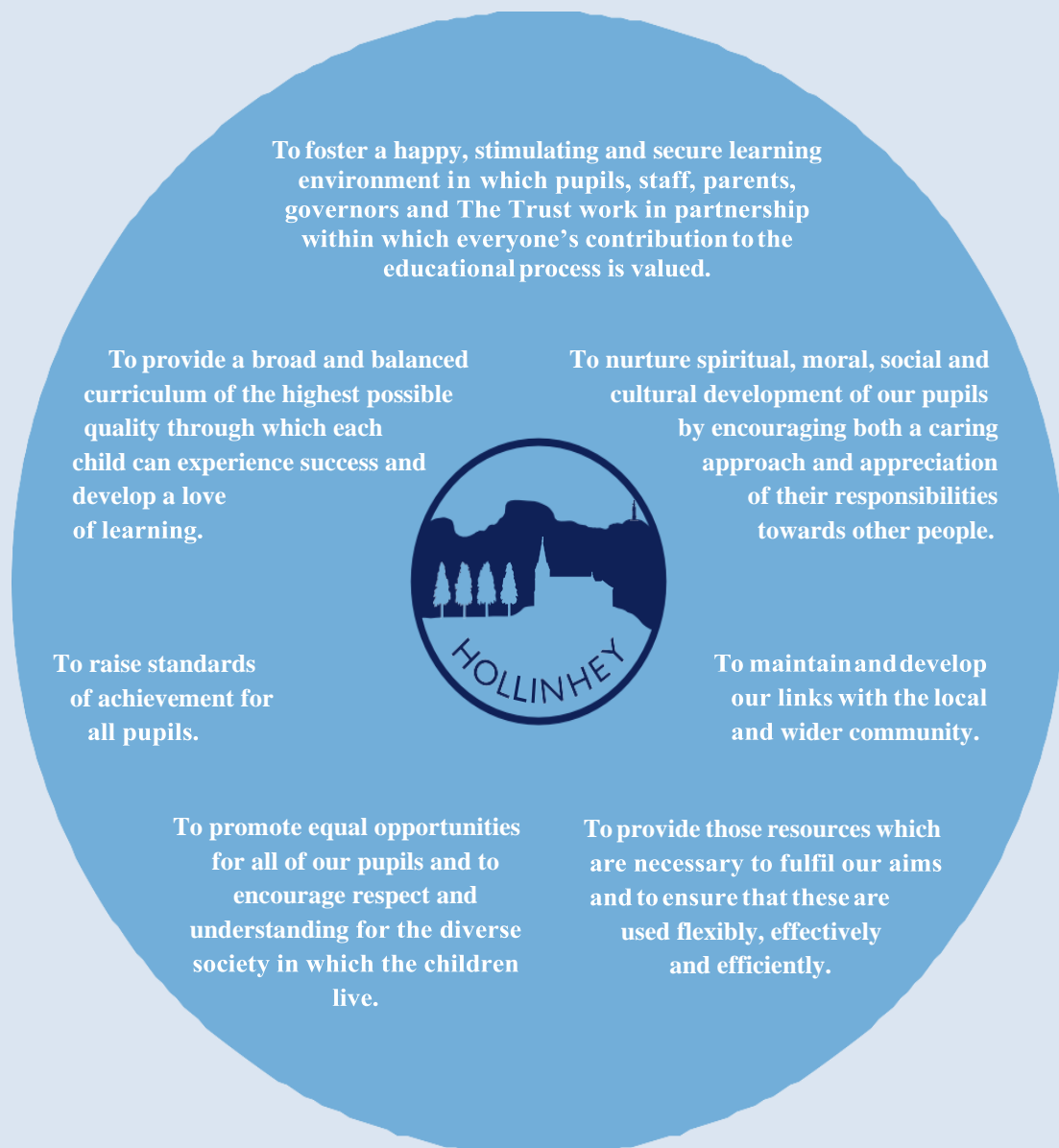


'Pupils show high levels of respect for staff and understand the importance of being kind to each other.'
OFSTED March 2023

We aim for every child to be a competent reader by the end of KS1 and for all children to have developed a love of reading. Whatever your child's talents are, we aim to provide a balance of opportunities and experiences within a secure environment where they feel safe to try new ventures and reach their true potential – academically, socially and emotionally.

School Aims

Hollinhey's school aims and values are evident throughout the school:



“At Hollinhey our aims and values support our ethos of developing the whole child.”

“Thank you so much for showing me around your wonderful school. As a retired teacher I am most impressed with your school, staff and children. Everyone is so happy, working hard in a very peaceful atmosphere. Well done.” Mr and Mrs Scott, Neighbours



These values run through everything we do here at Hollinhey Primary School & Nursery and are embedded in the ethos of the school. All the children throughout the school were involved in choosing our core values, and parents were consulted.

We are very proud to say that every child does matter at Hollinhey and we are always working with the governors, staff, parents and children, our community and various outside agencies to continually improve our already excellent provision.

www.hollinhey.cheshire.sch.uk

The Curriculum at Hollinhey

Leaders have designed an ambitious and interesting curriculum. It is well sequenced to ensure that pupils can build and remember learning.' OFSTED March 2023

THE EARLY YEARS FOUNDATION STAGE (EYFS)

Nursery School

Children aged 2-4 years

Reception Class

Children aged 4-5 years

The Foundation Stage provides the building blocks for later learning – listening, speaking, learning the names and sounds of letters, exploring number, learning about the world around them, developing self-expression in art, craft and movement activities and acquiring important social skills. The breadth of the curriculum is impressive with the emphasis on learning through fun and creativity.



“This year we will be planting bean stalks, sunflowers, strawberries, lettuce and lots of different flowers to attract butterflies and bees.” Miss Holland, Reception



KEY STAGE 1- Children aged 5-7yrs

KEY STAGE 2- Children aged 7-11yrs

The teaching staff at Hollinhey plan the delivery of the curriculum very carefully to ensure continuity and progression for all children. Activities are planned to suit the needs of each child through adaptive teaching. We believe children learn most effectively from a curriculum based upon practical, first-hand experience; this belief underpins activities in every area of the curriculum.

Many people are invited into school to share their skills with us and enrich the children's experiences. We also take children on visits to complement the class work.



Older children participate in residential visits. Year 4 have a day in the forest followed by a sleepover at school; Year 5 visit York for historical learning and Year 6 experience team building and outdoor pursuits at the Robinwood Centre, Wrexham.

A BROAD AND BALANCED CURRICULUM

CORE SUBJECTS

- English
- Maths
- Science

FOUNDATION SUBJECTS

- Art and Design
- Computing
- Design Technology
- Languages
- Geography
- History
- Music
- Physical Education
- Religious Education



Personal, Health, Social Education underpins much of what we teach and learn at Hollinhey to prepare our children for lifelong learning.

‘Pupils enjoy learning. They follow a broad curriculum and talk with enthusiasm about their favourite topics. Pupils have positive attitudes to learning and try hard to produce their best work.’
OFSTED March 2023

We have developed an interesting and creative curriculum which is built around well-constructed themes so that learning makes sense. Some aspects of learning are taught discretely such as phonics, spellings, times tables, handwriting etc so that these knowledge and skills can be applied and developed in “real” situations.

We believe that if we have high expectations of our pupils, they are more likely to achieve a high standard and foster a life-long love of learning.



Starting at Hollinhey Nursery

At Hollinhey Nursery we provide a caring, secure and happy environment which enables all our children to develop and thrive in all areas of their learning journey.

We offer education and care for children over the age of 2.

We believe that children learn well when they are happy and secure. Through play-based activities, both inside and outside. We will support your child to actively participate in their own learning and foster an atmosphere where they will want to explore and learn more. We actively encourage positive relationships where children have high levels of self-esteem and self-confidence, developing care and respect for themselves and others in a stimulating environment where your child will feel secure, valued and happy.



Here at Hollinhey Nursery, our ethos is all about teamwork; with staff and parents working closely together to ensure your child's unique needs are met. We operate an open door policy where parents are always welcome to come and see their child learning through play.



At Hollinhey Nursery we believe creativity and exploration are of the upmost importance to our children's learning and development. We do encourage children to wear the Hollinhey uniform which consists of a pale blue polo shirt and Navy jumper, however this is not compulsory.

Our Nursery times are 9am until 3pm Monday to Friday, term time only. Morning sessions run until 12pm. Afternoon sessions 12pm until 3pm.

We follow the same term dates and holidays as the rest of Hollinhey Primary School.

When your child starts Nursery, you will be provided with a fee statement based on the sessions allocated to your child which will give you details of payment amounts and payment deadline dates.

Parents will be asked to complete and sign our payments contract and provide the first month's fee in advance of their child's start date.

There are Government grants available, please check on the Governments website as qualifying dates may not be the same as our term dates.

If your child does have a funded place, you will be asked to complete and sign Cheshire East's Government funding form.

Please contact us direct on nursery@hollinhey.cheshire.sch.uk

Starting in Hollinhey Reception Class

When does my child have to start school officially?

Cheshire East Council's admission policy for all its primary schools is as follows:-

"Any child reaching the age of 5 between 1st September and 31st August may be admitted full time to school on the first day of the Autumn term in September."

We encourage parents to admit their child on the first day of the Autumn term as this does help children settle and make friends early on.



How do I get a place for my child?

We welcome enquiries from parents of children at any age, and encourage you to visit us as many times as you wish with your child before they start school. An open day is also held during the Autumn term each year to help parents make their choice. Our current admission number is 30 pupils.



Please contact admin@hollinhey.cheshire.sch.uk to book a school tour or enquire about our Open Day.

Since September 2005, the admissions process has been administered by the Local Authority and an application will have to be made to them before mid-January of the year your child is due to start school in September.

For more details go to:
www.cheshireeast.gov.uk/admissions

'As a parent you're naturally wondering how your child will settle into school – we are here to make it as easy as possible.' Miss Holland



Introduction to Reception

1. Your child will be invited to a series of half-day visits during the summer term. The children are gradually introduced to the school routines whilst doing fun activities, and they get to know their teacher, their new class mates and some older children in the school so they will know friendly faces right from the start.
2. Your family will be sent school newsletters inviting you to bring your child to events such as sports day, plays, fairs and special school lunches. You will start receiving these after we have notified you of your child's place. In the meantime, please browse our school website, which has a copy of each newsletter published on it. The majority of our correspondence is now via e-mail, so please leave an up-to-date address with the school office.



3. Parents of reception children are invited to a 'new parents' evenings in the Summer term prior to your child starting school and another early in the Autumn term after your child has started school, to find out more about how we work throughout our school. We will show you the sorts of activities that your children will be doing and give you an opportunity to have a go!

4. Children are encouraged to start full time in reception from the outset. Our main aim is to ensure that your child feels safe and secure, that friendships are forged and that the routine of the day is established but if you feel that your child would benefit from a more gradual easing into school please let us know. We are always willing to help, you know your child best.
5. Parents are very welcome to discuss any matters with the class teacher at the end of the school day; shorter, informal contact also takes place immediately before school starts. We like to give you quality time, so a note or a phone call asking for a time slot with a quick outline of your concerns is always appreciated.



Your Partnership with Hollinhey



Home and school are two of the most important influences on your child. It is vital that your child feels that you and the teachers are working together and sharing an interest in all their activities both in school and out.

We welcome offers of help from parents e.g. helping with displays, talking about their experiences, hearing readers and photocopying etc. One of the major ways parents support the school is through our parent group, "The Friends of Hollinhey".



FRIENDS OF HOLLINHEY

The Friends of Hollinhey is a registered charity and all parents are automatically members! There is a committee who work very hard to promote social activities within our school and community. They raise important funds which supplement and enhance our provision. The Friends of Hollinhey along with the staff respond to requests from children. For instance, IT and outdoor facilities have been improved. These have included interactive teaching boards; climbing frames, a traverse wall, an enclosed covered area for the youngest children and over 30 I-pads.

OPPORTUNITIES AT HOLLINHEY

The staff at Hollinhey work hard to give your child the best opportunities. They all share their interests with children by running after school clubs which include art clubs, choirs, cross-country, football, netball, rounders, cricket, drama, dance, and homework. Children also take part in and organise many community events including the switching on of the Christmas Tree Lights, a Christmas Fayre, The May Queen parade, Harvest and Christmas festivals.

"I am constantly impressed by the dedication and caring of all the staff. The children seem to be so happy here and I'm happy to be here one day a week. Well done to all." Parent Helper

Hollinhey Out of School Club (OOSC)

BEFORE AND AFTER SCHOOL CARE

Hollinhey provides a fee-paying Out of School Morning and Afternoon Club. Using the facilities on site, they provide a safe, stimulating experience for Hollinhey pupils from Rec-Year 6.

Morning: 7.45am - 8.45am

Afternoon: 3.20pm - 6pm

Email: OOSC@hollinhey.cheshire.sch.uk



THE HOLLINHEY SCHOOL DAY

The Primary school building opens its door to pupils at 8.40am to ease congestion on the roads around Hollinhey. Lessons start at 8.50am for all year groups.

MORNING

Reception, Year 1 & Year 2	8.50am – 11.45am
Year 3 & Year 4	8.50am – 12.00pm
Year 5 & Year 6	8.50am – 12.15pm

LUNCH:

Reception, Year 1 & Year 2	11.45am – 1.00pm
Year 3 & Year 4	12.00pm – 1.00pm
Year 5 & Year 6	12.15pm – 1.15pm

AFTERNOON:

Reception, Year 1 to Year 4	1.00pm – 3.20pm
Year 5 & Year 6	1.15pm – 3.20pm

There is a short break between the three morning lessons for all the school and the two afternoon lessons in Reception, Year 1 & Year 2.

- ❖ Children in Reception, Year 1 and Year 2 are entitled to a free school meal every day under the Governments' Infant School Meals Policy

GOVERNORS

Hollinhey has a very pro-active Governing Body. These people represent many aspects of society and they challenge and support the Headteacher and Senior Leadership Team to ensure the school continually improves to provide the very best academic and social outcomes for your child so that they are well prepared for the next steps in their life.

SAFEGUARDING PROCEDURES

All members of staff are checked to make sure they are safe to work with children. Schools are well placed to observe changes in children's behaviour or a failure to develop and parents should be aware, that where it appears a child might have been abused, the school is required, as part of the local safeguarding procedures, to report their concerns to social care. Likewise, if a parent or carer has concerns they should speak with Mrs Massey, the Hollinhey's Safeguard Lead.

head@hollinhey.cheshire.sch.uk

AND FINALLY...

If you wish to discuss any items in this prospectus in more details, or have any further questions, please do not hesitate to contact the school. We are always proud to show parents around.

It is a wonderful place of learning and care. We wish your child and yourself all the best during these exciting and formative years.

In the meantime, if you wish to find out more about our school, please visit our website at www.hollinhey.cheshire.sch.uk

Caroline Massey



www.hollinhey.cheshire.sch.uk

STAFF LIST 2025 - 2026

Mrs S Clough	Headteacher (Secondment to Cheshire East until June 2026)
Mrs C Massey	Acting Headteacher
Mr J Perry	Acting Deputy Headteacher and Year 6 Teacher
Miss E Holland	Reception/EYFS Teacher
Miss L Whitehead	Year 1 Teacher
Mrs I Harle	Year 1 Teacher
Mrs V Mottershead	Year 2 Teacher
Ms A Cook	Year 3 Teacher
Miss J Bewers	Year 3 Teacher
Mr B Barlow-Davenport	Year 4 Teacher
Mrs A Adams	Year 5 Teacher
Mrs L Riley	Nursery & OOSC Manager
Mrs L Cusick	Higher Level Teaching Assistant
Mrs H Rowley	Higher Level Teaching Assistant
Mrs J Wood	Higher Level Teaching Assistant
Miss N Rose	Teaching Assistant
Mrs K Holmes	Teaching Assistant
Miss B McNicol	Teaching Assistant
Miss S Middleton	Teaching Assistant
Miss C Hagar	Teaching Assistant
Mrs J Barber	Teaching Assistant
Mrs C Rance	Teaching Assistant
Mrs R Davey	Teaching Assistant
Mrs G Heathcote	Teaching Assistant
Miss K Fox	Teaching Assistant
Mrs E Clowes	Teaching Assistant
Mrs A Forbes	Bursar
Mrs M McPike	Admin Assistant (School)
Mrs K Windsor	Admin & Finance Assistant (Nursery & OOSC)
Mr J Forbes	Site Manager
Ms I Enright	Nursery Assistant
Mrs F Gibson	Nursery Assistant
Mrs K Woodward	Nursery Assistant
Mrs L Marples	Nursery Assistant
Mrs H Broadhurst	Nursery Assistant
Mrs K Stanton	Nursery Assistant
Mrs J Howarth	OOSC Deputy Manager
Mrs S Geary	OOSC Play Assistant
Ms L Farr	OOSC Play Assistant
Mrs M Hrebinyk	Mid-Day Assistant
Mrs G Longson	Mid-Day Assistant
Ms D Wooderson	Mid-day Assistant
Mrs C Hodgson	Mid-day Assistant & Nursery Assistant
Mr A Roberts	Mid-day Assistant
Mrs P Bettany	Cleaner
Mrs O Boon	Cleaner



Hollinhey Primary School & Nursery
Bell Avenue, Sutton, Macclesfield, Cheshire, SK11 0EE
01625 704352
www.hollinhey.cheshire.sch.uk

www.hollinhey.cheshire.sch.uk