

What should I already know?

Animals can be categorised into carnivores, herbivores & omnivores depending upon their diet.

Animals, including humans, need water, food and air for survival.

Animals, including humans, get their nutrition from the food they eat – they cannot make their own food.



Y4: Digestion, Teeth & Food Chains

Key Knowledge

Children understand the journey of food through the human body: Food enters the body through the mouth. Digestion starts when the teeth start to break the food down. Saliva is added and the tongue rolls the food into a ball. The food is swallowed and passes down the oesophagus to the stomach. Here the food is broken down further by being churned around and other chemicals are added.

The food passes into the small intestine. Here nutrients are removed from the food and leave the digestive system to be used elsewhere in the body. The rest of the food then passes into the large intestine. Here the water is removed for use elsewhere in the body. What is left is then stored in the rectum until it leaves the body through the anus when you go to the toilet.

Humans have four types of teeth: incisors for cutting; canines for tearing; and molars and premolars for grinding (chewing).

Living things can be classified as producers, predators and prey according to their place in the food chain.

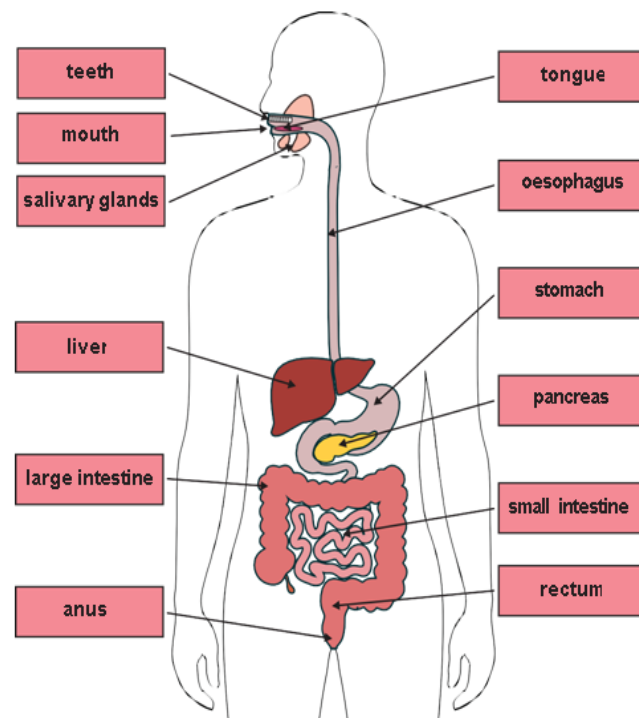
Key Vocabulary

digestion	the process of breaking down ingested food material
oesophagus	the part of your body that carries the food from the throat to the stomach
stomach	the organ inside the body where food is digested before moving onto the intestines
small intestine	part of the intestine where nutrients are absorbed into the body
large intestine	part of the intestine where water is absorbed from remaining waste food. Faeces are formed in the large intestine.
rectum	part of the digestive system where faeces are stored before leaving the body through the anus.
producer	an organism, such as a plant, that produces its own food
predator	an animal that hunts and eats other animals
prey	an animal that gets hunted and eaten by another animal

A FOOD CHAIN



The Digestive System



Teeth



Key

- incisors
- canines
- premolars
- molars
- wisdom